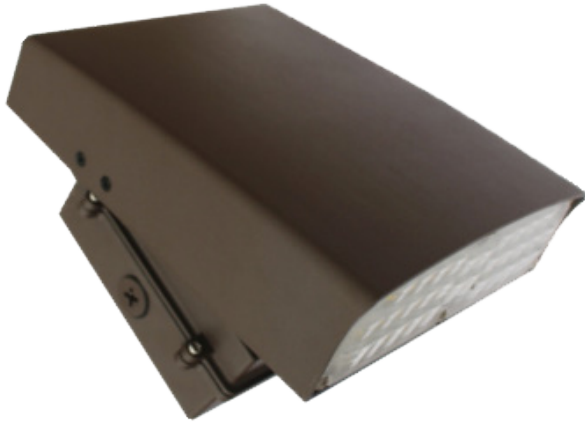


# LED WALL PACK SERIES

## SES-WMK

12W | 30W | 40W | 50W  
80W | 100W | 120W



### Technical Specifications

Watts:	12W   30W   40W   50W 80W   100W   120W
Size:	See Reverse
Lumen Output:	1250lm   3150lm   4200lm   5150lm 8800lm   11,000lm   13,200lm
CCT:	Warm White   3000K Cool White   5700K
Beam Angle:	80X100°
Voltage:	AC100-240V
Qualifications:	DLC   cUL   FCC
CRI:	>80Ra
PF:	0.9
IP Rate:	IP65
Lifespan:	50,000 hours



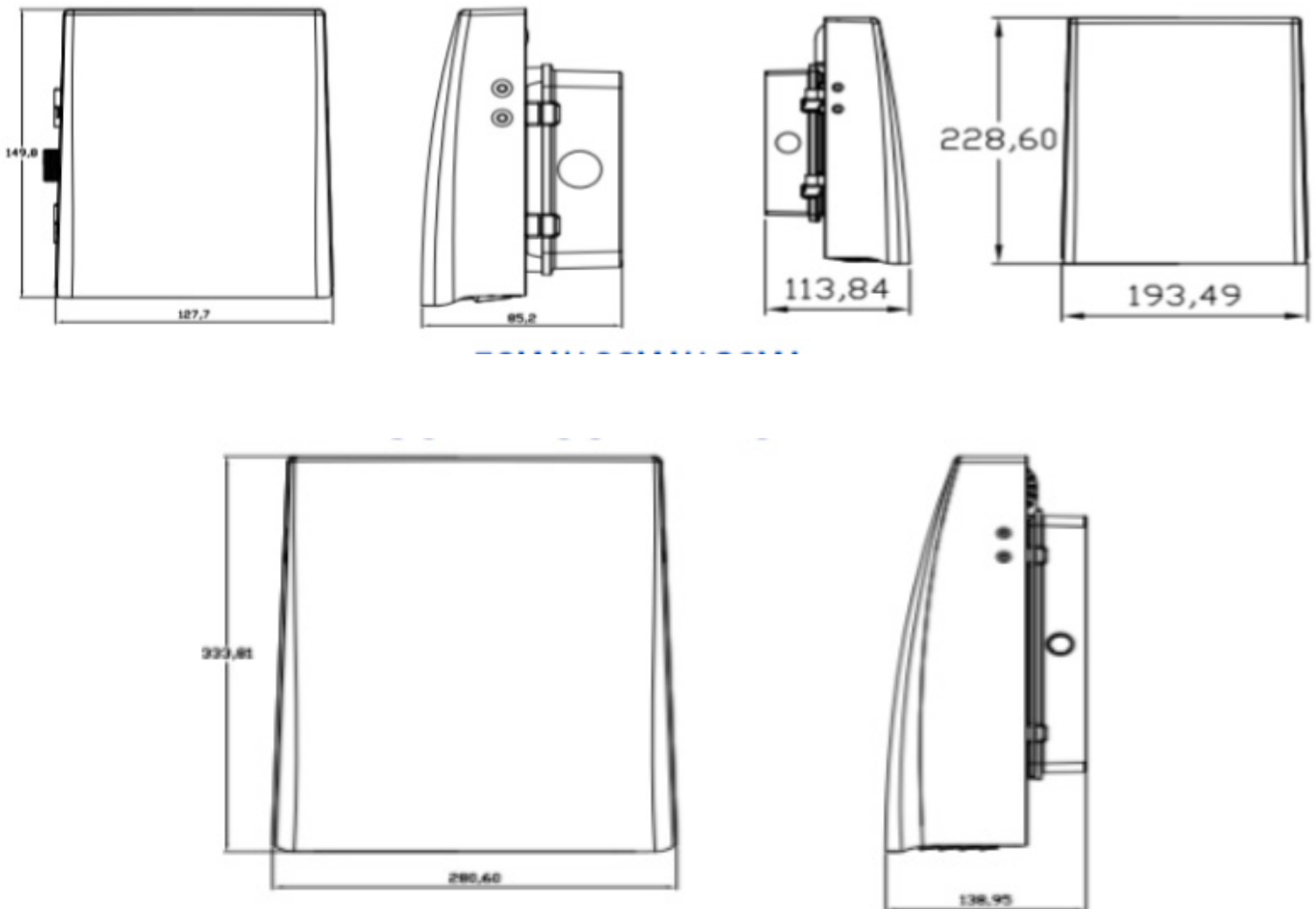
## Features

SARIN Energy is proud of its high-quality LED Wall Packs. This product adopts the latest LED technology with high lumen efficiency combined with a IP-65 rating and adaptive design. SARIN is excited to offer many variety of LED wall pack models to fit various lighting and aesthetic needs. Each of these models provide excellent light distribution while providing energy savings of up to 70%. SARIN wall packs are suitable for a variety of outdoor applications and have a long-lifespan of 50,000 hours.



**RoHS**

## Dimensional Diagrams (in.)



## Model Numbers

SES-WMK-5700-12  
SES-WMK-5700-30  
SES-WMK-5700-40

SES-WMK-5700-50  
SES-WMK-5700-80  
SES-WMK-5700-100

SES-WMK-5700-120