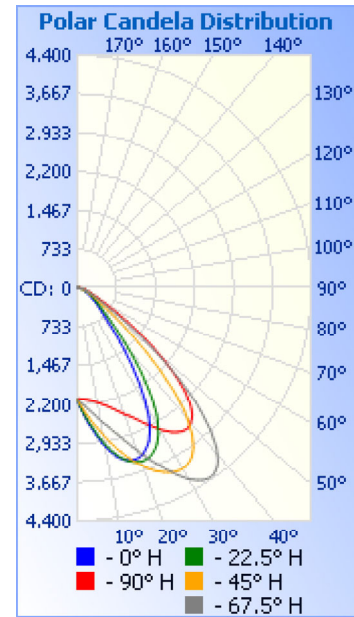


# Photometrics Pro

## Luminaire Photometric Report

**Filename:** Wall Pack WP05 55W - 277V  
**Manufacturer:** SARIN Energy Inc.  
**Luminaire:** SES-WP05-4000-55 277V  
**Lamp Output:** Total luminaire Lumens: 5977.5  
**Max Candela:** 4,371.4 at Horizontal: 67.5°, Vertical: 35°  
**Input Wattage:** 51.6  
**Luminous Opening:** Point  
**Test:** 01  
**Test Date:** 2017/05/08  
**Test Lab:** Standard-Tech Co. Ltd  
**Photometry :** Type C  
**Nema Type:** 6 X 6



### Roadway Summary

Cutoff Classification:	CUTOFF	
Distribution:	TYPE I, VERY SHORT	
Max Cd, 90 Deg Vert:	4.3	
Max Cd, 80 to <90 Deg:	124.8	
	Lumens	% Lamp
Downward Street Side:	3,591.1	60.1%
Downward House Side:	2,380.6	39.8%
Downward Total:	5,971.7	99.9%
Upward Street Side:	2.5	0%
Upward House Side:	3.9	0.1%
Upward Total:	6.4	0.1%
Total Lumens:	5,978.2	100%

### Flood Summary

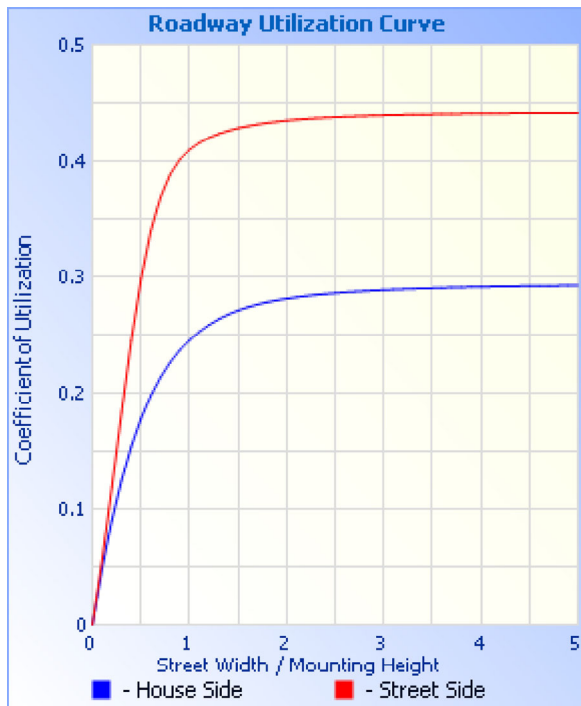
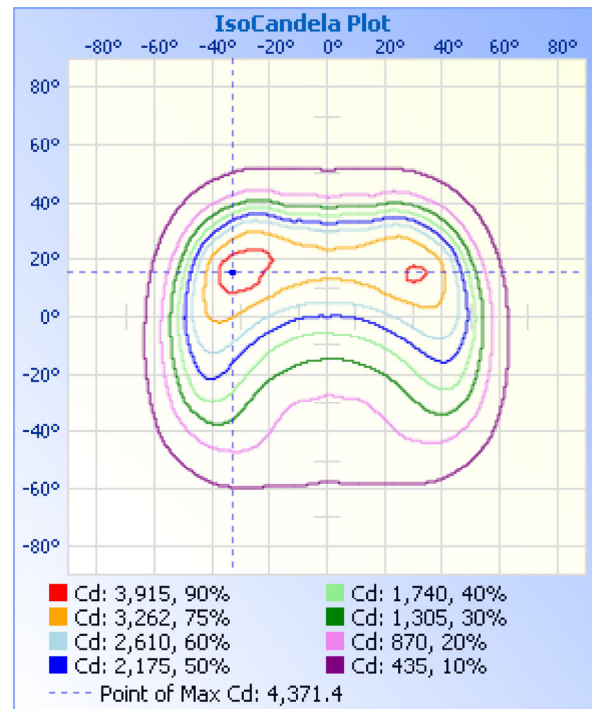
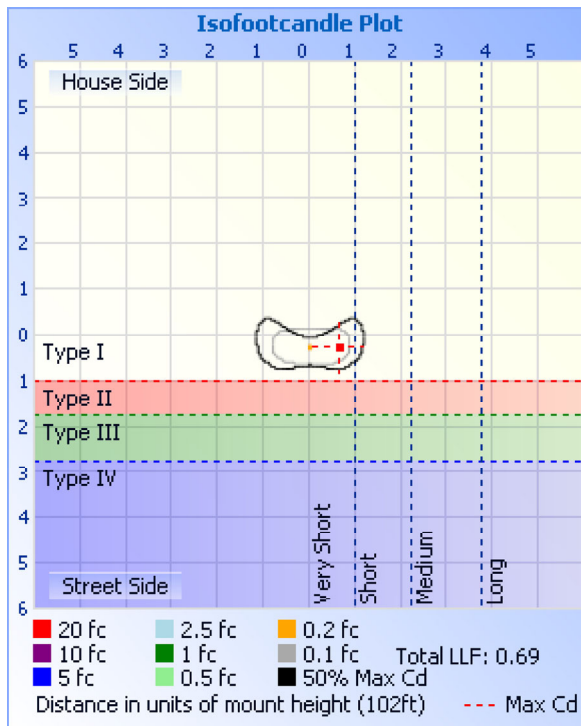
	Efficiency	Lumens	Horizontal Spread	Vertical Spread
Field (10%):	92.1%	5,503.4	122.7	110
Beam (50%):	52.8%	3,153.5	94.6	49.4
Total:	100%	5,975.7		

### Zonal Lumen Summary

Zone	Lumens	% Luminaire
0-30	2,014.0	33.7%
0-40	3,457.0	57.8%
0-60	5,453.3	91.2%
60-90	517.7	8.7%
70-100	186.4	3.1%
90-120	1.8	0%
0-90	5,971.0	99.9%
90-180	6.4	0.1%
0-180	5,977.5	100%

### Lumens Per Zone

Zone	Lumens	% Total	Zone	Lumens	% Total
0-10	208.1	3.5%	90-100	0.7	0%
10-20	665.0	11.1%	100-110	0.5	0%
20-30	1,140.9	19.1%	110-120	0.6	0%
30-40	1,443.0	24.1%	120-130	0.8	0%
40-50	1,272.9	21.3%	130-140	1.0	0%
50-60	723.5	12.1%	140-150	1.1	0%
60-70	332.0	5.6%	150-160	0.9	0%
70-80	152.4	2.5%	160-170	0.6	0%
80-90	33.3	0.6%	170-180	0.2	0%



**Illuminance at a Distance**

	Center Beam fc	Beam Width	
16.7ft	7.57 fc	15.3 ft	36.2 ft
33.3ft	1.90 fc	30.6 ft	72.1 ft
50.0ft	0.84 fc	45.9 ft	108.3 ft
66.7ft	0.47 fc	61.3 ft	144.5 ft
83.3ft	0.30 fc	76.5 ft	180.4 ft
100.0ft	0.21 fc	91.9 ft	216.6 ft

■ Vert. Spread: 49.4°  
 ■ Horiz. Spread: 94.6°

**Coefficients Of Utilization - Zonal Cavity Method**

Effective Floor Cavity Reflectance: 20%

RCC %:	80				70				50			30			10			0
RW %:	70	50	30	0	70	50	30	0	50	30	20	50	30	20	50	30	20	0
RCR: 0	1.19	1.19	1.19	1.19	1.16	1.16	1.16	1.00	1.11	1.11	1.11	1.06	1.06	1.06	1.02	1.02	1.02	1.00
1	1.11	1.07	1.03	1.00	1.08	1.05	1.01	.89	1.00	.98	.95	.97	.95	.93	.93	.91	.90	.88
2	1.02	.95	.90	.85	1.00	.94	.88	.77	.90	.86	.82	.87	.83	.80	.84	.81	.78	.76
3	.94	.85	.78	.73	.92	.84	.77	.68	.81	.75	.71	.78	.74	.70	.76	.72	.68	.66

4	.87	.77	.69	.63	.85	.75	.68	.60	.73	.67	.62	.71	.65	.61	.69	.64	.60	.58
5	.81	.69	.61	.55	.79	.68	.60	.53	.66	.59	.54	.64	.58	.54	.62	.57	.53	.51
6	.75	.63	.54	.49	.73	.62	.54	.47	.60	.53	.48	.58	.52	.48	.57	.51	.47	.45
7	.70	.57	.49	.43	.68	.56	.49	.42	.55	.48	.43	.53	.47	.43	.52	.46	.42	.40
8	.65	.52	.44	.39	.63	.51	.44	.38	.50	.43	.38	.49	.43	.38	.48	.42	.38	.36
9	.61	.48	.40	.35	.59	.47	.40	.34	.46	.39	.35	.45	.39	.35	.44	.39	.34	.33
10	.57	.44	.37	.32	.55	.44	.36	.31	.43	.36	.32	.42	.36	.31	.41	.35	.31	.30

**Candela Table - Type C**

	0	22.5	45	67.5	90	112.5	135	157.5	180	202.5	225	247.5	270	292.5	315	337.5	360
0	2112	2112	2112	2112	2112	2112	2112	2112	2112	2112	2112	2112	2112	2112	2112	2112	2112
1	2236	2217	2190	2135	2093	2063	2042	2052	2046	2063	2071	2074	2093	2128	2173	2210	2236
2	2314	2312	2246	2175	2097	2032	1994	1975	1979	1983	2012	2049	2095	2161	2231	2283	2314
3	2415	2386	2317	2207	2103	2009	1937	1901	1898	1923	1965	2020	2100	2201	2303	2374	2415
4	2499	2483	2393	2250	2111	1983	1895	1846	1839	1853	1912	1994	2106	2245	2362	2471	2499
5	2606	2562	2455	2298	2120	1959	1846	1782	1768	1788	1862	1973	2115	2282	2440	2551	2606
6	2673	2644	2536	2339	2132	1937	1800	1733	1702	1738	1825	1950	2124	2331	2521	2632	2673
7	2782	2728	2603	2392	2144	1922	1767	1676	1652	1681	1781	1931	2138	2373	2589	2715	2782
8	2866	2830	2670	2436	2160	1905	1727	1622	1593	1626	1748	1916	2154	2427	2657	2814	2866
9	2966	2907	2741	2496	2176	1894	1698	1582	1536	1584	1709	1901	2168	2483	2729	2893	2966
10	3040	3002	2827	2557	2198	1881	1664	1533	1492	1534	1672	1890	2188	2531	2815	2987	3040
11	3127	3073	2897	2607	2221	1872	1632	1496	1439	1495	1643	1878	2209	2593	2883	3060	3127
12	3192	3160	2985	2659	2244	1865	1608	1451	1399	1448	1609	1867	2228	2631	2972	3144	3192
13	3264	3221	3060	2716	2273	1858	1579	1407	1350	1402	1576	1859	2253	2699	3041	3203	3264
14	3309	3290	3147	2792	2299	1855	1556	1373	1303	1367	1551	1850	2275	2755	3107	3260	3309
15	3356	3339	3214	2852	2333	1852	1530	1331	1267	1323	1520	1844	2303	2829	3189	3322	3356
16	3386	3393	3300	2920	2364	1851	1505	1299	1222	1290	1497	1839	2328	2893	3255	3362	3386
17	3405	3428	3368	3006	2404	1852	1486	1260	1187	1249	1469	1835	2361	2971	3334	3403	3405
18	3416	3454	3449	3076	2447	1855	1463	1222	1145	1217	1448	1833	2397	3036	3392	3427	3416
19	3415	3478	3510	3170	2484	1859	1446	1192	1112	1179	1423	1833	2428	3121	3460	3449	3415
20	3404	3492	3568	3250	2532	1865	1425	1156	1072	1150	1398	1834	2467	3192	3514	3458	3404
21	3388	3494	3640	3352	2573	1872	1409	1129	1041	1114	1380	1837	2501	3261	3574	3457	3388
22	3351	3488	3694	3432	2612	1881	1391	1095	1004	1079	1357	1840	2544	3348	3616	3447	3351
23	3301	3468	3755	3537	2658	1890	1374	1069	969	1052	1340	1845	2581	3421	3662	3424	3301
24	3250	3446	3796	3624	2718	1903	1360	1038	942	1019	1318	1849	2625	3511	3694	3398	3250
25	3191	3404	3845	3709	2768	1918	1344	1014	910	994	1302	1857	2660	3581	3724	3361	3191
26	3098	3360	3880	3816	2836	1930	1332	985	885	964	1283	1864	2709	3666	3752	3300	3098
27	3010	3306	3914	3899	2893	1948	1317	963	857	941	1268	1871	2748	3730	3763	3242	3010
28	2885	3225	3931	4003	2947	1965	1306	936	835	914	1250	1881	2799	3796	3774	3157	2885
29	2773	3150	3943	4085	3017	1989	1293	912	810	893	1233	1891	2840	3867	3775	3074	2773
30	2604	3039	3948	4175	3073	2010	1284	893	791	868	1219	1904	2887	3916	3765	2956	2604
31	2468	2934	3942	4234	3140	2037	1274	870	770	850	1204	1915	2920	3969	3744	2848	2468
32	2289	2820	3920	4289	3188	2060	1267	854	750	828	1192	1929	2954	4003	3714	2732	2289
33	2140	2664	3891	4338	3247	2089	1259	834	735	807	1178	1941	2990	4028	3664	2559	2140
34	1949	2515	3854	4362	3287	2117	1252	820	718	792	1168	1955	3013	4041	3613	2424	1949
35	1798	2337	3787	4371	3321	2141	1246	803	704	775	1155	1969	3038	4036	3529	2246	1798
36	1614	2150	3716	4363	3352	2168	1240	788	689	761	1144	1978	3050	4013	3447	2100	1614
37	1475	1998	3609	4328	3364	2188	1236	776	678	746	1132	1988	3054	3981	3353	1915	1475
38	1313	1808	3508	4279	3367	2209	1230	762	665	735	1121	1994	3048	3918	3214	1768	1313
39	1195	1660	3361	4209	3355	2224	1226	752	653	722	1112	2000	3028	3847	3084	1591	1195
40	1063	1484	3223	4099	3323	2238	1221	741	644	711	1101	2000	3006	3763	2903	1424	1063
41	971	1353	3068	3995	3282	2246	1216	732	633	702	1092	1997	2961	3633	2746	1301	971
42	871	1203	2857	3834	3234	2247	1211	722	626	692	1079	1988	2911	3504	2516	1160	871
43	802	1094	2677	3683	3151	2237	1205	712	616	684	1069	1975	2829	3321	2340	1059	802
44	729	975	2416	3474	3065	2221	1198	705	608	675	1055	1954	2748	3158	2115	946	729
45	667	892	2221	3289	2938	2191	1186	695	601	666	1040	1930	2632	2933	1934	868	667
46	625	802	1973	3090	2820	2161	1173	688	592	660	1026	1893	2547	2742	1714	784	625

47	579	741	1780	2829	2657	2111	1159	680	585	652	1007	1858	2399	2518	1545	726	579
48	546	674	1550	2595	2498	2046	1137	672	576	645	990	1805	2272	2263	1350	663	546
49	509	629	1378	2335	2309	1984	1117	663	568	636	967	1741	2106	2004	1208	619	509
50	481	580	1187	2066	2150	1898	1088	651	558	626	942	1683	1964	1802	1051	571	481
51	447	545	1053	1855	1952	1825	1054	642	545	617	920	1601	1780	1558	940	537	447
52	422	505	908	1603	1794	1721	1023	628	533	605	891	1529	1595	1377	821	497	422
53	394	476	810	1415	1598	1608	984	616	515	593	865	1433	1451	1170	740	468	394
54	372	444	706	1202	1446	1514	949	599	498	577	831	1331	1281	1023	653	436	372
55	345	415	621	1050	1267	1390	903	579	476	561	795	1245	1153	865	595	412	345
56	327	393	564	885	1135	1291	865	560	452	538	764	1138	1003	759	532	384	327
57	307	367	505	772	986	1170	815	533	432	513	725	1053	868	649	479	359	307
58	292	348	465	656	880	1076	765	511	406	490	692	950	773	577	442	339	292
59	274	326	422	581	760	963	724	480	385	458	650	871	667	504	401	317	274
60	257	309	391	504	676	857	674	446	361	431	607	778	593	455	372	300	257
61	244	289	358	455	584	780	635	419	343	398	572	693	515	405	340	279	244
62	228	273	334	404	522	693	586	386	323	367	529	631	461	372	317	264	228
63	216	255	307	371	456	631	540	363	306	344	497	561	405	335	291	245	216
64	202	241	288	335	411	562	505	337	295	320	458	512	360	310	272	231	202
65	191	223	266	306	364	504	465	315	281	304	426	459	330	283	250	213	191
66	178	207	246	285	326	463	435	300	271	286	386	412	299	259	233	197	178
67	167	194	230	262	301	419	398	283	259	269	349	380	278	241	211	184	167
68	159	178	210	245	276	389	369	270	246	257	321	344	257	222	188	168	159
69	149	166	194	225	260	356	336	254	237	242	289	319	238	208	171	156	149
70	141	152	174	211	243	328	305	240	224	230	265	291	223	192	152	142	141
71	131	141	158	195	230	307	280	228	211	215	238	265	206	179	138	130	131
72	123	128	141	182	214	284	252	213	201	200	215	245	187	160	123	116	123
73	116	113	128	167	201	267	231	202	190	189	198	222	173	145	111	104	116
74	110	101	114	150	185	246	207	188	179	175	178	199	156	127	98	89	110
75	105	87	101	137	169	224	186	174	172	161	159	180	144	112	86	77	105
76	97	77	91	121	156	206	171	163	161	150	143	156	129	100	76	67	97
77	89	64	79	109	142	183	151	149	153	136	126	138	116	87	65	56	89
78	75	56	71	96	132	159	134	135	143	123	114	118	105	77	56	48	75
79	58	45	60	86	120	142	121	124	133	112	99	100	92	65	46	37	58
80	38	36	52	74	111	122	106	110	125	99	85	86	78	54	38	28	38
81	22	28	42	63	98	106	93	97	113	88	75	71	68	46	28	20	22
82	13	19	33	55	85	88	82	86	101	74	61	59	55	36	18	12	13
83	5	13	25	45	75	72	70	72	90	60	49	49	41	28	11	6	5
84	3	6	16	37	62	62	60	61	72	49	39	37	31	18	5	3	3
85	1	3	10	28	52	51	48	48	55	36	27	27	19	10	2	1	1
86	1	1	4	22	39	40	36	35	41	24	16	16	10	4	1	1	1
87	1	1	2	12	29	31	27	26	24	15	9	7	3	1	1	1	1
88	0	1	1	4	17	20	16	15	13	7	4	3	1	1	1	1	0
89	0	0	1	2	8	9	8	7	6	3	2	1	1	1	0	1	0
90	0	0	1	1	2	4	4	4	3	2	1	1	1	1	0	0	0
91	0	0	0	1	1	2	2	2	1	1	1	1	1	1	1	0	0
92	0	0	0	1	1	1	1	1	1	1	1	1	1	1	0	0	0
93	0	0	0	0	1	1	1	1	1	1	1	1	1	0	0	0	0
94	0	0	0	1	0	1	1	1	1	1	1	1	1	1	0	0	0
95	0	0	0	0	0	1	1	1	1	1	1	1	1	0	0	0	0

96	0	0	0	0	0	1	1	1	1	1	1	1	1	0	0	0	0
97	0	0	0	0	0	1	1	1	1	1	1	1	1	0	0	0	0
98	0	0	0	0	0	1	1	1	1	1	1	1	1	0	0	0	0
99	0	0	0	0	0	1	1	1	1	1	1	1	1	0	0	0	0
100	0	0	0	0	0	1	1	1	1	1	1	1	1	0	0	0	0
101	0	0	0	0	0	1	1	1	1	1	1	1	1	0	0	0	0
102	0	0	0	0	0	1	1	1	1	1	1	1	1	0	0	0	0
103	0	0	0	0	0	1	1	1	1	1	1	1	1	0	0	0	0
104	0	0	0	0	0	1	1	1	1	1	1	1	1	0	0	0	0
105	0	0	0	0	0	1	1	1	1	1	1	1	1	0	0	0	0
106	0	0	0	0	0	1	1	1	1	1	1	1	1	0	0	0	0
107	0	0	0	0	0	1	1	1	0	0	1	1	1	0	0	0	0
108	0	0	0	0	0	1	1	1	1	1	0	1	1	1	0	0	0
109	0	0	0	0	0	1	1	1	0	0	1	1	1	0	0	0	0
110	0	0	0	0	0	1	1	1	0	0	1	1	1	1	0	0	0
111	0	0	0	0	0	1	1	1	1	1	1	1	1	1	1	0	0
112	0	0	0	0	0	1	1	0	0	1	1	1	1	1	0	0	0
113	0	0	0	1	0	1	1	0	0	1	1	1	1	1	0	0	0
114	0	0	0	1	1	1	1	0	1	0	1	1	1	1	0	0	0
115	0	0	1	1	1	1	1	1	1	0	1	1	1	1	1	0	0
116	0	0	1	1	1	1	1	1	0	1	1	1	1	1	1	0	0
117	0	0	1	1	1	1	1	1	1	0	1	1	1	1	1	0	0
118	0	0	1	1	1	1	1	1	1	1	1	1	1	1	1	0	0
119	0	0	1	1	1	1	1	1	0	1	1	1	1	1	1	0	0
120	0	0	1	1	1	1	1	1	1	1	1	1	1	1	1	0	0
121	0	1	1	1	1	1	1	1	1	1	1	1	1	1	1	0	0
122	0	0	1	1	1	1	1	1	1	1	1	1	1	1	1	1	0
123	0	0	1	1	1	1	1	1	1	1	1	1	1	1	1	0	0
124	0	0	1	1	1	1	1	1	1	1	1	1	1	1	1	1	0
125	0	0	1	1	1	1	1	1	1	1	1	1	1	1	1	0	0
126	1	1	1	1	1	1	1	1	1	1	1	1	1	1	1	1	1
127	1	1	1	1	1	1	1	1	1	1	1	1	2	1	1	0	1
128	1	1	1	1	1	2	1	1	1	1	1	2	2	1	1	1	1
129	1	0	1	1	1	2	1	1	1	1	1	2	2	1	1	1	1
130	1	1	1	1	1	2	1	1	1	1	1	2	2	1	1	1	1
131	1	1	1	1	1	2	1	1	1	1	1	2	2	1	1	1	1
132	1	1	1	1	1	2	1	1	1	1	1	2	2	1	1	1	1
133	1	1	1	1	2	2	2	1	1	1	2	2	2	1	1	1	1
134	1	1	1	1	2	2	2	1	1	1	2	2	2	1	1	1	1
135	1	1	1	1	2	2	2	1	1	1	2	2	2	1	1	1	1
136	1	1	1	1	2	2	2	1	1	1	2	2	2	1	1	1	1
137	1	1	1	1	2	2	2	1	1	1	2	2	2	1	1	1	1
138	1	1	1	1	2	2	2	1	1	1	2	2	2	1	1	1	1
139	1	1	1	1	2	2	2	1	1	2	2	2	2	1	1	1	1
140	1	1	1	2	2	2	2	2	2	2	2	2	2	1	1	1	1
141	1	1	1	2	2	2	2	2	2	2	2	2	2	1	1	1	1
142	1	1	1	2	2	2	2	2	2	2	2	2	3	2	1	1	1
143	1	1	1	2	2	2	2	2	2	2	2	2	3	2	1	1	1
144	1	1	1	2	2	2	2	2	2	2	2	2	3	2	1	1	1

145	1	1	1	2	2	2	2	2	2	2	2	2	3	2	1	1	1
146	1	1	1	2	2	3	2	2	2	2	2	2	3	2	1	1	1
147	1	1	1	2	2	2	2	2	2	2	2	2	3	2	1	1	1
148	1	1	1	2	2	3	2	2	2	2	2	2	3	2	1	1	1
149	1	1	1	2	2	3	2	2	2	2	2	2	3	2	1	1	1
150	1	1	1	2	2	3	2	2	2	2	2	2	3	2	1	1	1
151	1	1	1	2	2	3	2	2	3	2	2	3	3	2	1	1	1
152	1	1	1	2	2	3	2	2	3	3	2	2	3	2	1	1	1
153	1	1	1	2	2	3	2	2	3	2	2	2	3	2	1	1	1
154	1	1	1	2	2	2	2	2	3	2	3	2	2	2	1	1	1
155	1	1	1	2	2	3	2	2	3	3	2	2	2	2	2	1	1
156	1	1	1	2	2	3	2	2	3	3	2	2	2	2	2	1	1
157	1	1	1	2	2	2	2	3	3	3	2	2	2	2	2	1	1
158	1	1	1	2	2	3	2	2	3	3	2	2	2	2	2	1	1
159	1	1	2	2	2	2	2	3	3	3	2	2	2	2	2	1	1
160	1	1	1	2	2	3	2	2	3	3	2	2	2	2	2	1	1
161	1	1	2	2	2	2	2	2	3	3	2	2	2	2	2	2	1
162	1	1	2	2	2	2	2	2	3	3	2	2	2	2	2	2	1
163	2	1	2	2	2	2	2	2	3	3	2	2	2	2	2	2	2
164	2	1	2	2	2	2	2	2	3	3	2	2	2	2	2	2	2
165	2	1	2	2	2	3	2	2	3	3	2	2	2	2	2	2	2
166	2	2	2	2	2	2	2	2	3	3	2	2	2	2	2	2	2
167	2	2	2	2	2	2	2	3	3	3	2	2	2	2	2	2	2
168	2	2	2	2	2	2	2	2	3	3	2	2	2	2	2	2	2
169	2	2	2	2	2	2	3	2	3	3	2	2	2	2	2	2	2
170	2	2	2	2	2	2	3	3	3	3	2	2	2	2	2	2	2
171	2	2	2	2	2	2	2	3	3	2	2	2	2	2	2	2	2
172	2	2	2	2	2	3	3	3	3	2	2	2	2	2	2	2	2
173	2	2	2	2	2	3	3	3	2	2	2	2	2	2	2	2	2
174	2	2	2	2	2	3	2	3	2	2	2	2	2	3	2	2	2
175	2	2	2	2	2	3	3	3	2	2	2	2	2	3	2	2	2
176	2	2	2	2	2	3	3	2	3	2	2	2	2	3	2	2	2
177	2	2	2	2	2	3	3	3	2	2	2	2	2	3	3	3	2
178	3	2	2	2	2	3	3	3	3	2	2	2	2	3	3	3	3
179	2	2	2	2	2	3	3	3	3	2	2	2	2	3	3	3	2
180	2	2	2	2	2	2	2	2	2	2	2	2	2	2	2	2	2

**Luminaire Report Summary**

IESNA:LM-63-2002  
[TEST] 01  
[TESTDATE] 2017/05/08  
[TESTLAB] Standard-Tech Co. Ltd  
[ISSUE DATE]  
[MANUFAC] SARIN Energy Inc.  
[LUMINAIRE] SES-WP05-4000-55 277V  
[\_TOTALLUMINAIRELUMENS] 5977.5

FILE: CREATED USING ABSOLUTE PHOTOMETRY  
FILE: CANDELA MULTIPLIER: 1  
FILE: VERTICAL ANGLES: 181, HORIZONTAL ANGLES: 17  
FILE: COORDINATE SYSTEM: TYPE C  
FILE: UNIT OF MEASURE: METRIC  
FILE: BALLAST FACTOR: 1

Photometrics Pro 1.3.29 copyright 2003-2019 by jSolutions, Inc.  
Reported data calculated from manufacturer's data file, based on IES recommended methods.