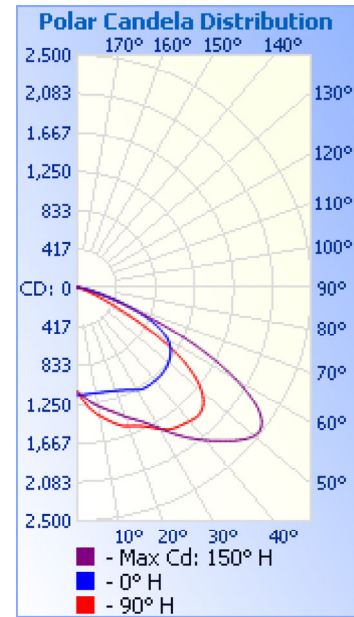


Photometrics Pro

Luminaire Photometric Report

Filename: Solar Street Light SSLPR 40W
Manufacturer: SARIN Energy Inc
Luminaire: SES-SSLPR-40-6000
Lamp: 60W 6000K
Lamp Output: 1 lamp, rated Lumens/lamp: 4806.2
Max Candela: 2,482.4 at Horizontal: 150°, Vertical: 52°
Input Wattage: 40.424
Luminous Opening: Point
Test Date: 2018-08-24
Test Lab: EVERFINE
Photometry : Type C
Nema Type: 6 X 7

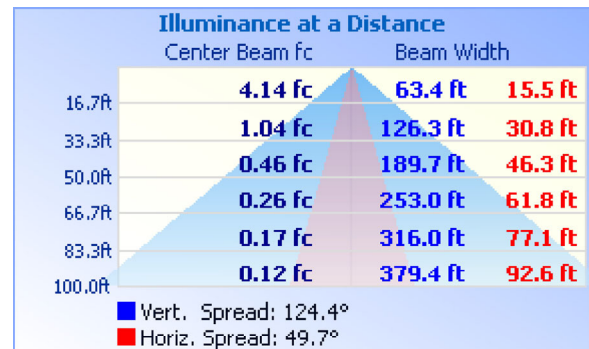
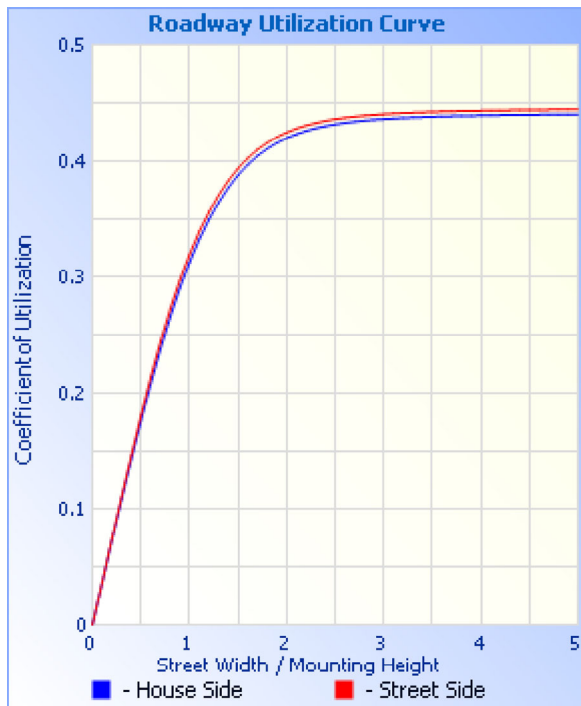
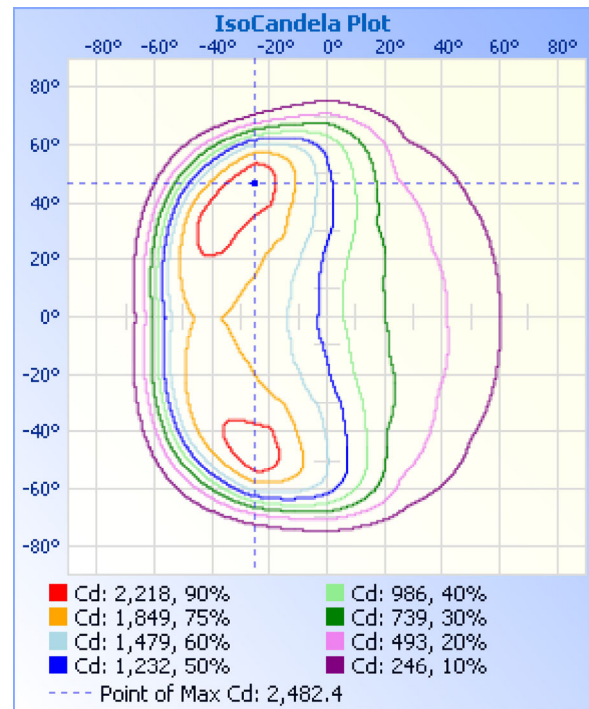
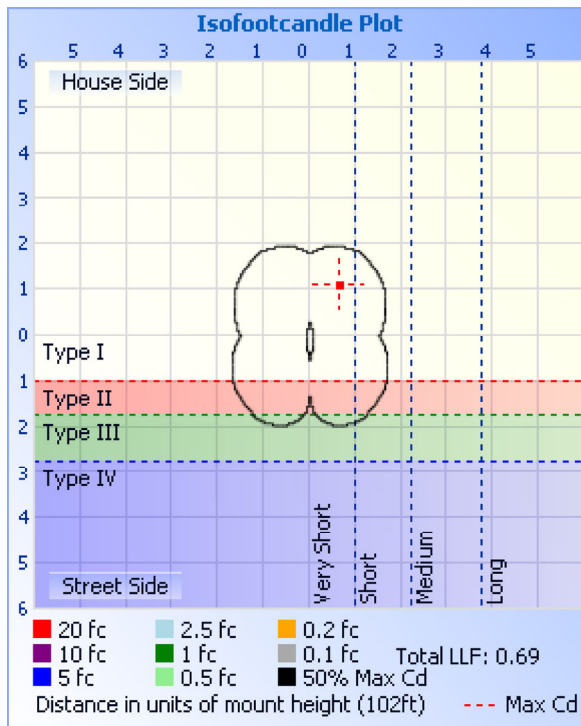


Roadway Summary		
Cutoff Classification:	CUTOFF	
Distribution:	TYPE III, VERY SHORT	
Max Cd, 90 Deg Vert:	13.2	
Max Cd, 80 to <90 Deg:	122.5	
	Lumens	% Lamp
Downward Street Side:	2,373.1	49.4%
Downward House Side:	2,417.3	50.3%
Downward Total:	4,790.4	99.7%
Upward Street Side:	8.1	0.2%
Upward House Side:	7.8	0.2%
Upward Total:	15.8	0.3%
Total Lumens:	4,806.2	100%

Flood Summary				
	Efficiency	Lumens	Horizontal Spread	Vertical Spread
Field (10%):	96.2%	4,622.5	105.7	143.4
Beam (50%):	64.2%	3,084.2	49.7	124.4
Total:	100%	4,804.3		

Zonal Lumen Summary			
Zone	Lumens	% Lamp	% Luminaire
0-30	1,005.4	20.9%	20.9%
0-40	1,828.9	38.1%	38.1%
0-60	3,980.8	82.8%	82.8%
60-90	809.1	16.8%	16.8%
70-100	176.3	3.7%	3.7%
90-120	4.7	0.1%	0.1%
0-90	4,789.9	99.7%	99.7%
90-180	15.8	0.3%	0.3%
0-180	4,805.7	100%	100%

Lumens Per Zone					
Zone	Lumens	% Total	Zone	Lumens	% Total
0-10	109.2	2.3%	90-100	1.2	0%
10-20	331.0	6.9%	100-110	1.3	0%
20-30	565.2	11.8%	110-120	2.3	0%
30-40	823.5	17.1%	120-130	2.8	0.1%
40-50	1,054.0	21.9%	130-140	2.8	0.1%
50-60	1,097.9	22.8%	140-150	2.3	0%
60-70	634.0	13.2%	150-160	1.7	0%
70-80	152.1	3.2%	160-170	1.1	0%
80-90	23.0	0.5%	170-180	0.4	0%



Coefficients Of Utilization - Zonal Cavity Method

Effective Floor Cavity Reflectance: 20%

RCC %:	80				70				50			30			10			0
RW %:	70	50	30	0	70	50	30	0	50	30	20	50	30	20	50	30	20	0
RCR: 0	1.19	1.19	1.19	1.19	1.16	1.16	1.16	1.00	1.11	1.11	1.11	1.06	1.06	1.06	1.02	1.02	1.02	1.00
1	1.09	1.05	1.01	.97	1.07	1.02	.99	.86	.98	.95	.92	.94	.92	.90	.91	.89	.87	.85
2	.99	.91	.84	.79	.97	.89	.83	.72	.86	.80	.76	.82	.78	.74	.79	.76	.72	.70
3	.90	.79	.71	.65	.87	.78	.70	.60	.75	.68	.63	.72	.66	.62	.69	.65	.61	.58

4	.82	.69	.61	.54	.79	.68	.60	.51	.66	.58	.52	.63	.57	.52	.61	.55	.51	.49
5	.75	.61	.52	.45	.72	.60	.51	.43	.58	.50	.44	.56	.49	.44	.54	.48	.43	.41
6	.68	.55	.45	.39	.66	.54	.45	.37	.52	.44	.38	.50	.43	.38	.48	.42	.37	.35
7	.63	.49	.40	.33	.61	.48	.39	.32	.46	.39	.33	.45	.38	.33	.44	.37	.32	.30
8	.58	.44	.35	.29	.57	.43	.35	.28	.42	.34	.29	.41	.34	.29	.40	.33	.29	.27
9	.54	.40	.32	.26	.53	.40	.31	.25	.38	.31	.26	.37	.30	.25	.36	.30	.25	.23
10	.50	.37	.29	.23	.49	.36	.28	.23	.35	.28	.23	.34	.27	.23	.33	.27	.23	.21

Candela Table - Type C													
	0	30	60	90	120	150	180	210	240	270	300	330	360
0	1155	1147	1139	1120	1117	1108	1155	1147	1139	1120	1117	1108	1155
1	1152	1159	1165	1149	1145	1124	1158	1135	1115	1092	1091	1092	1152
2	1149	1172	1190	1180	1174	1142	1162	1122	1091	1063	1067	1076	1149
3	1147	1186	1217	1214	1204	1162	1166	1110	1068	1037	1044	1062	1147
4	1145	1200	1242	1246	1233	1183	1171	1099	1046	1013	1022	1049	1145
5	1143	1213	1268	1276	1261	1201	1176	1088	1025	990	1002	1037	1143
6	1142	1227	1294	1304	1288	1221	1181	1077	1005	967	981	1025	1142
7	1142	1241	1318	1332	1312	1240	1186	1066	986	945	962	1013	1142
8	1142	1256	1342	1356	1334	1259	1191	1056	968	925	943	1002	1142
9	1142	1270	1364	1378	1354	1275	1196	1046	949	904	925	990	1142
10	1143	1285	1386	1398	1373	1291	1201	1036	932	885	907	979	1143
11	1145	1301	1406	1418	1393	1306	1206	1026	916	867	890	969	1145
12	1146	1317	1425	1438	1413	1321	1211	1017	899	848	873	958	1146
13	1148	1333	1444	1458	1435	1337	1217	1008	884	831	857	948	1148
14	1151	1350	1463	1479	1458	1352	1222	999	869	816	842	939	1151
15	1153	1367	1482	1500	1481	1369	1228	991	854	800	827	929	1153
16	1156	1385	1501	1522	1502	1387	1232	982	841	786	813	919	1156
17	1160	1403	1521	1541	1521	1406	1238	975	827	772	800	910	1160
18	1164	1422	1541	1557	1536	1426	1244	967	814	758	787	902	1164
19	1168	1441	1563	1570	1547	1447	1250	959	802	745	774	893	1168
20	1173	1462	1587	1580	1558	1468	1257	952	790	732	762	885	1173
21	1178	1483	1612	1590	1569	1490	1264	944	778	720	750	876	1178
22	1184	1507	1638	1599	1582	1511	1272	937	766	708	739	868	1184
23	1191	1532	1666	1610	1598	1531	1282	930	756	697	728	860	1191
24	1198	1559	1694	1623	1617	1553	1292	923	745	686	717	852	1198
25	1206	1590	1724	1638	1642	1576	1306	917	734	675	706	845	1206
26	1216	1623	1754	1656	1669	1602	1320	910	723	664	695	837	1216
27	1227	1658	1787	1678	1702	1630	1336	904	713	654	684	830	1227
28	1238	1696	1819	1701	1736	1663	1352	898	703	644	673	821	1238
29	1250	1734	1852	1726	1772	1698	1367	892	692	634	662	813	1250
30	1263	1772	1884	1750	1806	1736	1380	884	681	624	651	804	1263
31	1273	1809	1915	1774	1838	1775	1392	876	670	614	639	794	1273
32	1281	1843	1944	1795	1866	1816	1400	867	659	605	628	784	1281
33	1288	1875	1970	1811	1889	1856	1406	857	647	594	616	774	1288
34	1291	1906	1995	1824	1909	1898	1410	847	636	583	605	762	1291
35	1294	1934	2019	1833	1926	1939	1414	837	624	572	593	752	1294
36	1295	1963	2044	1841	1945	1980	1418	826	612	560	581	740	1295
37	1295	1993	2071	1847	1965	2019	1424	816	600	548	569	728	1295
38	1295	2024	2099	1854	1985	2057	1430	805	588	535	556	717	1295
39	1296	2058	2129	1861	2005	2096	1437	794	576	522	544	704	1296
40	1296	2094	2160	1870	2024	2134	1442	783	564	509	531	692	1296
41	1296	2131	2193	1877	2044	2171	1448	771	551	495	517	679	1296
42	1296	2170	2227	1883	2062	2207	1453	759	538	481	503	665	1296
43	1295	2210	2260	1885	2078	2245	1457	746	525	468	489	652	1295
44	1294	2249	2291	1883	2092	2282	1462	734	511	454	475	638	1294
45	1291	2288	2319	1876	2102	2319	1467	721	496	441	460	623	1291
46	1288	2327	2343	1862	2108	2356	1471	707	482	428	446	609	1288

47	1284	2364	2361	1842	2113	2391	1475	694	467	415	431	594	1284
48	1279	2399	2371	1815	2115	2423	1478	680	452	401	417	578	1279
49	1274	2429	2374	1782	2114	2451	1480	665	436	388	402	563	1274
50	1267	2453	2369	1742	2109	2472	1481	651	420	375	388	546	1267
51	1260	2471	2354	1695	2098	2482	1481	636	405	362	374	530	1260
52	1251	2478	2329	1637	2080	2482	1478	621	389	348	360	513	1251
53	1241	2474	2292	1574	2053	2469	1473	605	372	334	346	496	1241
54	1230	2456	2244	1497	2014	2441	1464	589	357	320	332	478	1230
55	1218	2423	2180	1412	1963	2399	1450	572	341	307	319	460	1218
56	1205	2374	2105	1316	1900	2340	1432	554	326	294	306	441	1205
57	1188	2307	2014	1209	1823	2265	1406	536	310	282	292	422	1188
58	1169	2225	1909	1096	1736	2177	1376	516	295	269	279	402	1169
59	1147	2126	1790	976	1634	2073	1338	495	280	257	266	381	1147
60	1121	2012	1660	855	1521	1958	1293	473	265	245	252	360	1121
61	1092	1883	1521	736	1401	1832	1240	450	250	232	239	338	1092
62	1057	1742	1372	622	1272	1695	1179	425	236	220	225	316	1057
63	1017	1591	1222	520	1140	1550	1111	397	222	208	212	294	1017
64	972	1432	1069	442	1007	1400	1035	369	207	195	199	272	972
65	920	1268	915	364	875	1244	953	341	194	182	185	251	920
66	863	1101	768	286	751	1091	869	313	180	152	172	230	863
67	800	936	629	237	632	939	780	284	167	109	159	211	800
68	734	778	502	199	523	796	693	257	154	88	146	193	734
69	666	630	393	170	427	662	606	231	142	84	133	175	666
70	596	517	301	146	346	543	524	206	130	83	121	159	596
71	527	403	228	125	278	456	454	184	118	84	109	144	527
72	461	290	181	102	224	369	385	162	108	82	98	130	461
73	397	220	135	80	186	282	316	143	98	83	86	117	397
74	340	170	108	63	149	225	264	125	88	82	74	105	340
75	289	134	90	54	125	180	218	109	77	82	64	93	289
76	244	108	77	48	105	146	180	95	68	77	54	82	244
77	206	90	67	43	91	120	147	82	59	71	44	72	206
78	176	76	59	38	79	101	115	71	52	62	36	62	176
79	146	65	53	35	69	86	82	60	43	49	28	49	146
80	122	56	47	31	61	73	59	40	35	35	20	34	122
81	101	49	42	28	55	63	43	29	28	22	14	24	101
82	79	43	37	25	49	54	33	23	21	10	8	19	79
83	60	37	33	22	44	46	27	19	15	1	4	14	60
84	45	32	29	20	40	36	21	15	9	0	2	11	45
85	33	27	25	17	36	28	17	13	5	0	1	9	33
86	25	23	20	15	33	23	13	10	3	0	1	6	25
87	18	19	16	12	29	19	10	8	3	0	1	4	18
88	14	15	12	10	24	16	8	6	2	0	0	2	14
89	10	11	9	7	18	13	6	4	1	0	0	1	10
90	7	8	6	5	13	10	3	2	0	0	0	1	7
91	4	5	3	3	9	7	2	1	0	0	0	0	4
92	2	3	1	1	5	4	1	1	0	0	0	0	2
93	1	1	0	0	2	2	1	0	0	0	0	0	1
94	1	1	0	0	0	1	0	0	0	0	0	1	1
95	1	0	0	0	0	1	1	1	0	0	0	1	1

96	1	0	0	0	0	0	1	1	0	0	1	1	1
97	1	0	0	0	0	0	1	1	1	0	1	1	1
98	1	0	0	0	0	0	1	1	1	0	1	1	1
99	1	0	0	0	0	0	1	1	1	0	1	1	1
100	1	0	0	0	0	0	1	1	1	0	1	2	1
101	1	0	0	0	0	0	1	2	1	1	1	2	1
102	1	0	0	0	0	0	1	2	1	1	1	2	1
103	1	1	0	0	0	0	1	2	2	1	2	2	1
104	1	1	0	0	0	0	1	2	2	1	2	2	1
105	2	1	0	0	0	0	2	2	2	1	2	3	2
106	2	1	0	0	0	1	2	3	2	1	2	3	2
107	2	1	0	0	0	1	2	3	2	2	2	3	2
108	2	1	0	0	0	1	2	3	2	2	2	3	2
109	2	1	0	0	0	1	2	3	3	2	3	3	2
110	2	1	0	0	0	1	2	3	3	2	3	4	2
111	2	1	0	0	0	1	2	3	3	2	3	4	2
112	2	1	0	0	0	1	2	4	3	2	3	4	2
113	2	1	0	0	0	1	2	4	3	3	3	4	2
114	3	1	1	0	0	1	2	4	3	3	3	4	3
115	3	1	1	0	0	1	3	4	4	3	4	5	3
116	3	1	1	1	1	1	3	4	4	3	4	5	3
117	3	1	1	1	1	1	3	4	4	3	4	5	3
118	3	1	1	1	1	1	3	4	4	4	4	5	3
119	3	2	1	1	1	1	3	4	4	4	4	5	3
120	3	2	1	1	1	1	3	5	4	4	4	5	3
121	3	2	1	1	1	1	3	5	4	4	5	5	3
122	3	2	1	1	1	1	3	5	5	4	5	5	3
123	4	2	1	1	1	1	3	5	5	4	5	5	4
124	4	2	1	1	1	1	3	5	5	4	5	5	4
125	4	2	1	1	1	2	3	5	5	5	5	5	4
126	4	2	1	1	1	2	3	5	5	5	5	5	4
127	4	2	1	1	1	2	4	5	5	5	5	5	4
128	4	2	1	1	1	2	4	5	5	5	5	5	4
129	4	2	1	1	1	2	4	5	5	5	5	5	4
130	4	2	1	1	1	2	4	5	5	5	5	5	4
131	4	2	1	1	1	2	4	5	5	5	6	5	4
132	4	2	1	1	1	2	4	5	5	5	6	5	4
133	4	2	1	1	1	2	4	5	5	5	6	5	4
134	4	2	1	1	1	2	4	5	5	5	6	5	4
135	4	2	1	1	1	2	4	5	5	5	6	5	4
136	4	2	1	1	1	2	4	5	5	5	6	5	4
137	4	2	2	1	1	2	4	5	5	5	6	5	4
138	4	2	2	1	1	2	4	5	5	5	6	5	4
139	4	3	2	1	1	2	4	5	5	5	6	5	4
140	4	3	2	1	2	2	4	5	5	5	6	5	4
141	4	3	2	2	2	2	4	5	5	5	6	5	4
142	4	3	2	2	2	2	4	5	5	5	6	5	4
143	4	3	2	2	2	2	4	5	5	5	6	5	4
144	4	3	2	2	2	2	4	5	5	5	6	5	4

145	4	3	2	2	2	2	4	5	5	5	6	5	4
146	4	3	2	2	2	2	4	5	5	5	5	5	4
147	4	3	2	2	2	2	4	5	5	5	5	5	4
148	4	3	2	2	2	2	4	5	5	5	5	5	4
149	4	3	2	2	2	2	4	5	5	5	5	5	4
150	4	3	2	2	2	2	4	5	5	5	5	5	4
151	4	3	2	2	2	3	4	5	5	5	5	5	4
152	4	3	2	2	2	3	4	5	5	5	5	5	4
153	4	3	2	2	2	3	4	5	5	5	5	5	4
154	4	3	2	2	2	3	4	5	5	5	5	5	4
155	4	3	2	2	2	3	4	5	5	5	5	5	4
156	4	3	2	2	2	3	4	5	5	5	5	5	4
157	4	3	2	2	2	3	4	5	5	5	5	5	4
158	4	3	2	2	2	3	4	5	5	5	5	5	4
159	4	3	3	2	2	3	4	5	5	5	5	5	4
160	4	3	3	2	2	3	4	5	5	5	5	5	4
161	4	3	3	2	2	3	4	5	5	5	5	5	4
162	4	3	3	3	3	3	4	4	5	5	5	5	4
163	4	3	3	3	3	3	4	4	5	5	5	5	4
164	4	3	3	3	3	3	4	4	5	5	5	4	4
165	4	3	3	3	3	3	4	4	5	5	5	4	4
166	4	4	3	3	3	3	4	4	5	5	5	4	4
167	4	4	3	3	3	3	4	4	5	5	5	4	4
168	4	4	3	3	3	3	4	4	5	5	5	4	4
169	4	4	3	3	3	3	4	4	4	5	4	4	4
170	4	4	3	3	3	3	4	4	4	4	4	4	4
171	4	4	3	3	3	3	4	4	4	4	4	4	4
172	4	4	3	3	3	3	4	4	4	4	4	4	4
173	4	4	3	3	3	3	4	4	4	4	4	4	4
174	4	4	3	3	3	4	4	4	4	4	4	4	4
175	4	4	4	3	3	4	4	4	4	4	4	4	4
176	4	4	4	3	3	4	4	4	4	4	4	4	4
177	4	4	4	4	4	4	4	4	4	4	4	4	4
178	4	4	4	4	4	4	4	4	4	4	4	4	4
179	4	4	4	4	4	4	4	4	4	4	4	4	4
180	4	4	4	4	4	4	4	4	4	4	4	4	4

Luminaire Report Summary

IESNA:LM-63-2002
[TEST]
[TESTDATE] 2018-08-24
[TESTLAB] EVERFINE
[ISSUE DATE] 2019-06-12 14:12:07
[MANUFAC] SARIN Energy Inc
[LUMINAIRE] SES-SSLPR-40-6000
[LAMP] 60W 6000K
[_TOTALLUMINAIRELUMENS] 4805.7
[_LAMPPOSITION] 0,0
[OTHER] EVERFINE GO-2000A_V1 SYSTEM
FILE: CANDELA MULTIPLIER: 1
FILE: VERTICAL ANGLES: 181, HORIZONTAL ANGLES: 13
FILE: COORDINATE SYSTEM: TYPE C
FILE: UNIT OF MEASURE: METRIC
FILE: BALLAST FACTOR: 1

Photometrics Pro 1.3.29 copyright 2003-2019 by jSolutions, Inc.
Reported data calculated from manufacturer's data file, based on IES recommended methods.