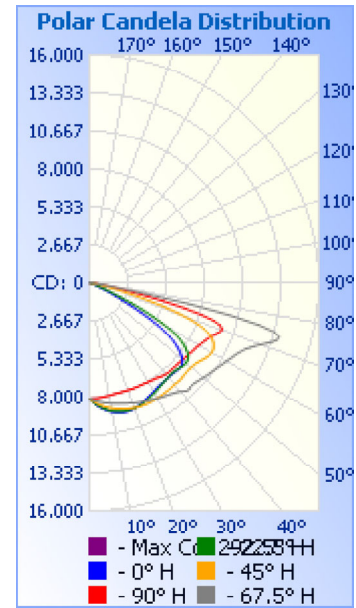


Photometrics Pro

Luminaire Photometric Report

Filename: Shoebox SBN 240W - 277V
Manufacturer: SARIN Energy Inc.
Luminaire: SES-SBN-3000-240 277V
Lamp Output: Total luminaire Lumens: 30961
Max Candela: 15,040.8 at Horizontal: 292.5°, Vertical: 71°
Input Wattage: 236
Luminous Opening: Point
Test Date: 2016-09-11
Test Lab: Standard-Tech Co. Ltd
Photometry : Type C
Nema Type: 7 X 7



Roadway Summary

Cutoff Classification:	CUTOFF
Distribution:	TYPE III, MEDIUM
Max Cd, 90 Deg Vert:	11.0
Max Cd, 80 to <90 Deg:	1,703.3
	Lumens % Lamp
Downward Street Side:	20,998.8 67.8%
Downward House Side:	9,895.0 32%
Downward Total:	30,893.8 99.8%
Upward Street Side:	24.5 0.1%
Upward House Side:	44.7 0.1%
Upward Total:	69.2 0.2%
Total Lumens:	30,963.1 100%

Flood Summary

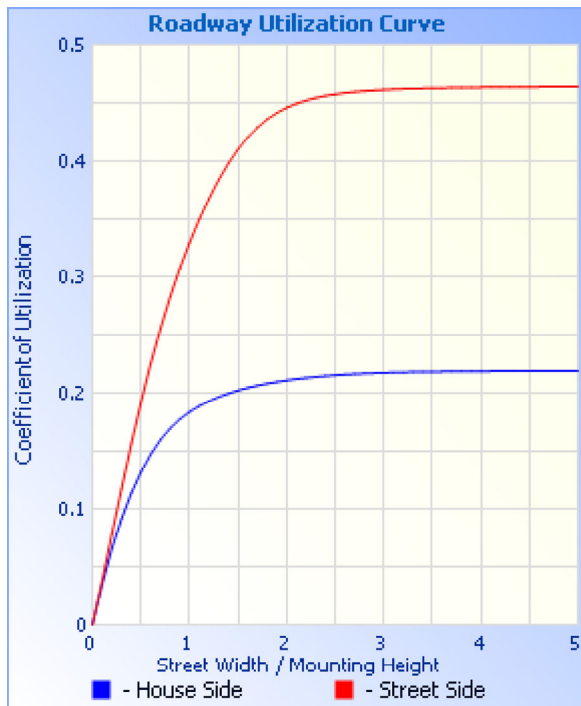
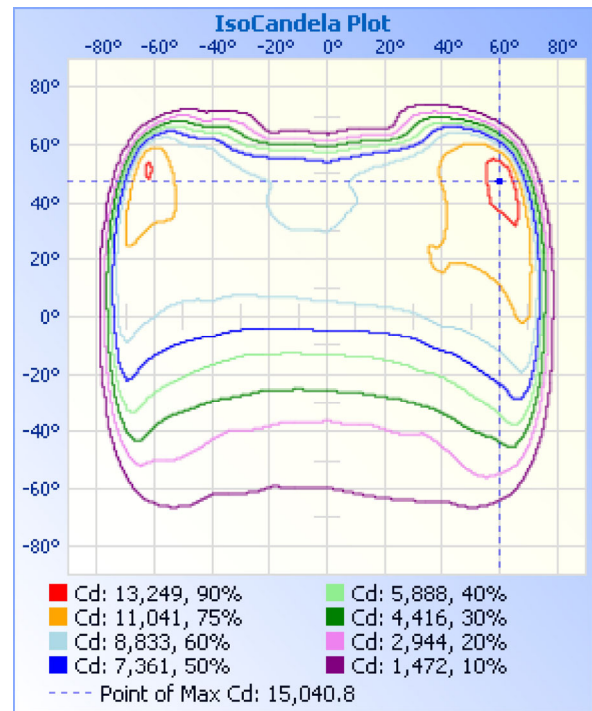
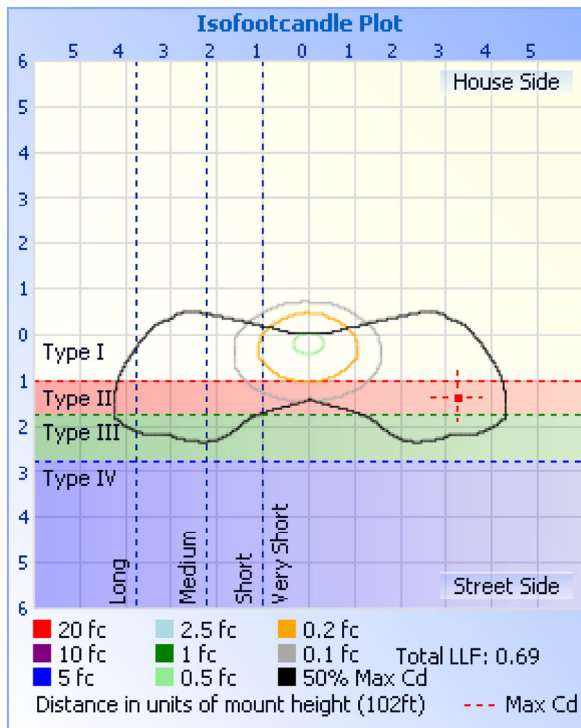
	Efficiency	Lumens	Horizontal Spread	Vertical Spread
Field (10%):	97.4%	30,165.9	148.8	131.5
Beam (50%):	69.4%	21,475.5	139.6	84.5
Total:	100%	30,950.9		

Zonal Lumen Summary

Zone	Lumens	% Luminaire
0-30	6,394.0	20.7%
0-40	10,861.5	35.1%
0-60	22,050.1	71.2%
60-90	8,841.7	28.6%
70-100	3,342.9	10.8%
90-120	27.2	0.1%
0-90	30,891.7	99.8%
90-180	69.2	0.2%
0-180	30,961.0	100%

Lumens Per Zone

Zone	Lumens	% Total	Zone	Lumens	% Total
0-10	764.6	2.5%	90-100	6.0	0%
10-20	2,193.5	7.1%	100-110	9.4	0%
20-30	3,435.9	11.1%	110-120	11.9	0%
30-40	4,467.5	14.4%	120-130	11.9	0%
40-50	5,306.1	17.1%	130-140	10.3	0%
50-60	5,882.5	19.0%	140-150	8.2	0%
60-70	5,504.7	17.8%	150-160	6.2	0%
70-80	3,191.0	10.3%	160-170	3.9	0%
80-90	145.9	0.5%	170-180	1.6	0%



Illuminance at a Distance

	Center Beam fc	Beam Width	
16.7ft	29.1 fc	30.3 ft	90.8 ft
33.3ft	7.31 fc	60.5 ft	181.1 ft
50.0ft	3.24 fc	90.8 ft	271.9 ft
66.7ft	1.82 fc	121.1 ft	362.7 ft
83.3ft	1.17 fc	151.3 ft	453.0 ft
100.0ft	0.81 fc	181.6 ft	543.9 ft

■ Vert. Spread: 84.5°
 ■ Horiz. Spread: 139.6°

Coefficients Of Utilization - Zonal Cavity Method

Effective Floor Cavity Reflectance: 20%

RCC %:	80				70				50			30			10			0
RW %:	70	50	30	0	70	50	30	0	50	30	20	50	30	20	50	30	20	0
RCR: 0	1.19	1.19	1.19	1.19	1.16	1.16	1.16	1.00	1.11	1.11	1.11	1.06	1.06	1.06	1.02	1.02	1.02	1.00
1	1.08	1.03	.98	.94	1.05	1.00	.96	.83	.96	.93	.89	.92	.89	.87	.88	.86	.84	.82
2	.97	.88	.80	.74	.94	.86	.79	.67	.82	.76	.71	.79	.74	.70	.76	.72	.68	.66
3	.87	.76	.67	.60	.85	.74	.66	.55	.71	.64	.58	.68	.62	.57	.65	.60	.56	.53

4	.79	.66	.56	.49	.77	.65	.56	.46	.62	.54	.48	.59	.53	.47	.57	.51	.47	.44
5	.72	.58	.48	.41	.70	.57	.48	.39	.55	.47	.40	.53	.46	.40	.51	.45	.40	.37
6	.66	.52	.42	.35	.64	.51	.42	.34	.49	.41	.35	.47	.40	.34	.46	.39	.34	.32
7	.61	.47	.37	.31	.59	.46	.37	.30	.44	.36	.30	.43	.35	.30	.41	.35	.30	.28
8	.57	.42	.33	.27	.55	.42	.33	.26	.40	.32	.27	.39	.32	.26	.38	.31	.26	.24
9	.53	.39	.30	.24	.51	.38	.30	.23	.37	.29	.24	.36	.29	.24	.35	.28	.23	.22
10	.49	.35	.27	.22	.48	.35	.27	.21	.34	.26	.21	.33	.26	.21	.32	.26	.21	.19

Candela Table - Type C																	
	0	22.5	45	67.5	90	112.5	135	157.5	180	202.5	225	247.5	270	292.5	315	337.5	360
0	8110	8110	8110	8110	8110	8110	8110	8110	8110	8110	8110	8110	8110	8110	8110	8110	8110
1	8258	8250	8216	8161	8105	8049	7997	7960	7950	7966	8001	8058	8115	8174	8222	8253	8258
2	8402	8378	8316	8210	8102	7988	7877	7800	7783	7808	7889	8003	8121	8237	8329	8388	8402
3	8538	8505	8409	8263	8096	7921	7757	7644	7609	7655	7774	7949	8126	8298	8431	8514	8538
4	8662	8617	8498	8308	8084	7849	7626	7475	7430	7494	7648	7889	8134	8362	8532	8631	8662
5	8772	8722	8579	8354	8071	7772	7488	7305	7246	7331	7522	7828	8143	8423	8629	8737	8772
6	8872	8819	8652	8397	8056	7694	7350	7134	7062	7164	7400	7765	8157	8485	8723	8837	8872
7	8960	8904	8725	8438	8042	7613	7210	6962	6875	6990	7271	7700	8167	8543	8808	8933	8960
8	9039	8980	8793	8479	8027	7532	7068	6791	6691	6821	7142	7632	8176	8605	8892	9029	9039
9	9112	9055	8858	8518	8011	7451	6927	6619	6508	6653	7008	7562	8184	8666	8977	9113	9112
10	9175	9118	8914	8554	7991	7366	6787	6449	6328	6489	6878	7496	8193	8729	9054	9184	9175
11	9231	9169	8968	8592	7976	7282	6650	6277	6155	6328	6753	7432	8202	8793	9125	9246	9231
12	9273	9211	9017	8634	7962	7200	6513	6112	5991	6176	6630	7368	8210	8858	9192	9298	9273
13	9317	9252	9066	8671	7953	7118	6379	5951	5831	6024	6512	7297	8223	8921	9259	9347	9317
14	9348	9286	9110	8704	7948	7032	6243	5802	5673	5881	6394	7227	8240	8986	9325	9392	9348
15	9373	9311	9151	8735	7948	6948	6114	5661	5527	5745	6279	7162	8252	9051	9386	9432	9373
16	9389	9326	9183	8773	7948	6869	5986	5523	5391	5617	6167	7102	8271	9113	9443	9464	9389
17	9387	9329	9211	8812	7950	6795	5868	5392	5269	5498	6052	7036	8291	9173	9494	9490	9387
18	9380	9328	9243	8851	7954	6718	5751	5272	5154	5380	5944	6968	8309	9230	9541	9508	9380
19	9361	9328	9276	8896	7960	6642	5640	5156	5043	5270	5844	6906	8328	9282	9584	9511	9361
20	9327	9317	9300	8937	7965	6571	5532	5046	4939	5165	5748	6846	8351	9343	9626	9506	9327
21	9286	9305	9321	8974	7973	6502	5429	4945	4833	5064	5653	6786	8376	9403	9667	9501	9286
22	9240	9280	9344	9010	7979	6429	5336	4849	4730	4968	5565	6730	8397	9469	9710	9487	9240
23	9195	9247	9355	9054	7981	6355	5246	4752	4629	4867	5477	6674	8420	9544	9753	9471	9195
24	9144	9213	9362	9093	7984	6281	5161	4654	4526	4772	5396	6614	8444	9614	9787	9449	9144
25	9086	9173	9369	9129	7987	6213	5079	4557	4421	4680	5311	6559	8472	9685	9811	9422	9086
26	9024	9130	9377	9173	7992	6146	4996	4459	4314	4586	5229	6512	8503	9756	9833	9389	9024
27	8968	9081	9372	9217	7995	6082	4921	4357	4202	4488	5157	6467	8534	9829	9854	9355	8968
28	8922	9032	9360	9259	7997	6019	4840	4251	4082	4382	5087	6415	8562	9908	9875	9322	8922
29	8884	8989	9347	9298	8011	5962	4766	4142	3962	4278	5021	6370	8598	9979	9894	9290	8884
30	8838	8947	9344	9342	8027	5908	4696	4030	3835	4172	4957	6327	8644	10047	9915	9271	8838
31	8787	8902	9334	9395	8046	5852	4621	3917	3692	4061	4892	6287	8687	10135	9939	9243	8787
32	8738	8845	9333	9435	8066	5799	4553	3801	3544	3947	4831	6264	8741	10216	9968	9205	8738
33	8697	8804	9325	9474	8086	5751	4486	3676	3388	3821	4774	6250	8795	10294	9998	9174	8697
34	8668	8763	9310	9520	8100	5717	4411	3543	3227	3692	4697	6258	8856	10370	10032	9139	8668
35	8648	8715	9302	9567	8128	5688	4334	3411	3065	3552	4613	6249	8925	10445	10058	9113	8648
36	8631	8681	9296	9613	8165	5650	4253	3266	2903	3412	4530	6226	9015	10527	10085	9093	8631
37	8616	8650	9294	9674	8209	5610	4170	3121	2756	3261	4448	6207	9129	10622	10128	9058	8616
38	8600	8620	9283	9732	8253	5562	4087	2976	2618	3110	4366	6156	9247	10726	10171	9019	8600
39	8587	8598	9265	9805	8284	5512	3997	2828	2491	2959	4275	6090	9347	10868	10208	8994	8587
40	8580	8571	9251	9902	8313	5466	3910	2691	2376	2818	4180	6040	9408	11067	10252	8978	8580
41	8581	8552	9257	10030	8337	5418	3819	2563	2275	2691	4083	6003	9422	11334	10296	8958	8581
42	8588	8541	9277	10147	8342	5375	3717	2448	2182	2577	3973	5970	9376	11546	10350	8954	8588
43	8601	8546	9271	10186	8334	5334	3611	2343	2101	2469	3860	5931	9339	11467	10370	8956	8601
44	8616	8564	9248	10114	8333	5286	3500	2252	2029	2375	3743	5900	9350	11280	10344	8966	8616
45	8623	8592	9226	10100	8342	5240	3383	2170	1965	2293	3615	5875	9396	11245	10304	8990	8623
46	8638	8628	9215	10120	8348	5199	3256	2096	1909	2219	3486	5849	9434	11273	10268	9022	8638

47	8650	8666	9201	10170	8361	5160	3129	2031	1858	2148	3345	5829	9484	11316	10242	9080	8650
48	8632	8716	9199	10219	8380	5119	3002	1975	1814	2081	3203	5807	9535	11374	10237	9133	8632
49	8570	8755	9210	10273	8397	5075	2878	1920	1778	2020	3062	5776	9598	11445	10244	9183	8570
50	8461	8766	9236	10328	8408	5028	2756	1868	1758	1963	2939	5750	9652	11520	10273	9216	8461
51	8294	8753	9260	10385	8445	4978	2640	1817	1756	1912	2815	5714	9724	11596	10299	9235	8294
52	8081	8716	9288	10444	8475	4929	2532	1770	1752	1864	2698	5679	9806	11683	10330	9227	8081
53	7827	8624	9334	10499	8507	4875	2436	1725	1734	1820	2597	5638	9880	11773	10375	9187	7827
54	7532	8471	9403	10558	8528	4824	2342	1683	1695	1783	2503	5603	9955	11868	10443	9083	7532
55	7188	8281	9475	10617	8564	4757	2258	1646	1650	1748	2418	5553	10019	11975	10520	8929	7188
56	6769	8036	9568	10695	8612	4698	2181	1612	1606	1715	2340	5498	10087	12072	10600	8734	6769
57	6271	7749	9647	10767	8647	4628	2113	1577	1560	1687	2270	5426	10160	12173	10693	8504	6271
58	5659	7407	9725	10845	8685	4557	2050	1547	1518	1657	2207	5351	10240	12291	10795	8209	5659
59	4928	6977	9780	10927	8725	4475	1991	1517	1478	1633	2144	5249	10317	12424	10882	7838	4928
60	4129	6441	9823	11002	8787	4383	1931	1488	1442	1612	2087	5152	10394	12527	10971	7390	4129
61	3295	5756	9828	11098	8850	4285	1874	1460	1403	1589	2031	5057	10494	12638	11049	6825	3295
62	2591	4997	9791	11195	8912	4173	1820	1432	1365	1563	1979	4944	10598	12780	11103	6124	2591
63	2001	4155	9726	11282	8994	4052	1767	1400	1321	1534	1928	4827	10707	12912	11128	5282	2001
64	1594	3260	9620	11398	9073	3927	1714	1365	1271	1498	1880	4724	10823	13092	11120	4303	1594
65	1190	2429	9467	11537	9154	3807	1662	1324	1213	1451	1835	4611	10966	13254	11064	3289	1190
66	787	1728	9277	11672	9253	3687	1608	1277	1141	1394	1793	4488	11116	13483	10946	2365	787
67	579	1251	9004	11842	9383	3573	1556	1218	1064	1315	1746	4358	11247	13764	10785	1583	579
68	497	782	8629	12095	9537	3447	1504	1144	968	1220	1698	4213	11331	14079	10576	1119	497
69	454	545	8120	12347	9675	3303	1453	1057	833	1099	1639	4051	11304	14425	10277	660	454
70	420	441	7425	12649	9776	3160	1401	955	612	960	1568	3878	11020	14782	9862	488	420
71	390	394	6572	13023	9768	3017	1339	830	448	804	1475	3693	10412	15041	9282	423	390
72	362	358	5615	13376	9549	2860	1265	713	377	659	1353	3438	9420	14968	8528	382	362
73	334	328	4595	13674	9052	2698	1167	602	336	529	1201	3182	8061	14357	7566	348	334
74	312	302	3580	13759	8154	2536	1055	485	302	398	1023	2925	6519	13064	6394	319	312
75	295	278	2631	13349	6866	2364	921	346	277	279	826	2593	4872	11071	5081	292	295
76	276	256	1799	12181	5287	2176	775	238	254	208	637	2212	3375	8543	3673	267	276
77	254	237	1382	9992	4004	1947	638	178	229	175	472	1796	2165	5814	2348	245	254
78	232	225	967	7065	2720	1672	456	151	207	154	305	1364	1602	3425	1723	230	232
79	210	213	552	4002	1450	1369	224	134	179	138	188	984	1043	1746	1101	217	210
80	189	197	403	1703	807	1066	154	120	149	125	152	662	483	1067	479	200	189
81	167	173	316	1009	439	784	130	107	130	110	131	448	294	401	343	178	167
82	146	147	255	345	254	557	110	94	114	97	112	304	195	284	271	152	146
83	124	126	210	257	163	374	92	84	102	86	93	194	143	232	223	130	124
84	102	107	171	210	119	154	76	73	88	75	77	101	110	193	182	109	102
85	84	92	136	170	92	78	62	61	66	63	62	71	85	153	146	93	84
86	68	79	106	137	72	58	47	47	47	49	47	56	65	119	112	79	68
87	46	61	79	107	55	45	33	33	28	33	32	43	47	91	84	58	46
88	27	36	54	76	35	29	20	20	17	18	18	27	27	58	52	33	27
89	5	11	22	29	11	9	5	3	3	3	5	10	10	15	13	6	5
90	1	1	4	11	8	8	3	0	0	0	4	10	9	10	6	1	1
91	0	0	3	9	8	9	4	0	0	0	4	11	9	8	5	1	0
92	0	0	3	8	8	10	5	0	0	0	5	12	9	7	4	0	0
93	0	0	3	8	9	11	6	0	0	0	5	13	10	7	4	0	0
94	0	0	2	7	9	12	7	0	0	1	6	14	10	6	3	0	0
95	0	0	2	7	10	13	8	0	0	1	7	15	11	6	3	0	0

96	0	0	2	7	11	15	9	1	0	1	8	16	12	6	3	0	0
97	0	0	2	7	12	16	10	1	0	1	9	17	13	6	2	0	0
98	0	1	2	7	12	17	11	1	0	1	9	18	14	6	2	0	0
99	0	1	2	7	13	18	12	2	0	2	10	19	14	5	2	1	0
100	0	1	2	7	14	18	12	2	1	2	11	19	15	6	2	1	0
101	0	1	2	7	15	19	13	3	1	3	11	19	15	6	2	1	0
102	1	1	2	8	16	19	13	3	2	4	12	19	16	6	2	1	1
103	1	1	3	8	16	20	13	4	2	4	13	19	16	6	2	1	1
104	1	1	3	8	17	20	14	5	3	5	14	19	17	7	2	1	1
105	1	1	3	9	17	20	14	6	3	6	14	19	17	7	2	1	1
106	1	2	3	9	18	20	15	6	4	6	15	20	18	8	2	1	1
107	1	2	3	10	19	20	15	7	4	7	15	20	18	8	3	1	1
108	1	2	4	10	19	20	16	8	5	8	16	21	18	9	3	2	1
109	2	2	4	11	19	20	16	8	5	8	16	22	19	9	3	2	2
110	2	2	4	11	20	21	16	9	6	9	16	23	19	9	3	2	2
111	2	2	4	12	20	22	16	9	6	9	16	24	20	10	3	2	2
112	2	2	5	12	20	23	16	10	7	10	16	25	20	10	4	2	2
113	2	2	5	12	20	24	16	10	7	11	17	25	20	10	4	2	2
114	2	3	5	13	20	24	17	10	8	11	17	25	20	11	4	2	2
115	2	3	5	13	20	25	17	10	8	10	17	25	20	11	4	2	2
116	2	3	6	13	21	25	17	10	9	10	18	24	21	11	5	2	2
117	2	3	6	13	21	25	17	9	10	9	18	24	21	11	5	2	2
118	3	3	6	13	20	25	18	10	10	10	19	24	21	11	5	2	3
119	3	3	6	14	20	25	19	11	10	11	19	23	21	11	5	2	3
120	3	3	7	14	20	25	19	13	10	12	19	23	21	11	6	3	3
121	3	4	7	14	20	24	19	14	11	14	19	22	21	11	6	4	3
122	4	5	7	14	20	24	19	14	12	14	19	22	21	11	6	4	4
123	4	5	7	14	19	23	18	14	14	13	19	21	21	11	6	4	4
124	5	5	7	14	18	22	17	14	14	13	18	21	20	12	6	4	5
125	5	6	7	14	18	21	17	13	14	13	18	21	20	12	6	5	5
126	5	6	7	14	18	21	16	13	14	13	18	20	20	12	6	5	5
127	5	6	7	15	18	21	16	14	14	14	19	20	20	12	6	5	5
128	6	6	7	15	18	20	16	15	14	15	19	20	20	12	6	5	6
129	6	6	8	14	18	19	16	16	14	16	19	19	19	12	6	6	6
130	6	6	8	14	18	18	16	18	14	17	19	19	19	12	6	5	6
131	7	6	8	13	17	17	16	19	15	18	19	18	18	12	6	6	7
132	7	6	8	12	17	17	15	20	15	19	19	18	17	11	6	6	7
133	7	7	8	12	17	17	15	20	16	20	19	18	17	11	6	6	7
134	7	7	8	12	17	16	15	20	17	20	18	18	16	11	6	6	7
135	7	7	8	12	17	16	15	20	17	20	18	18	16	11	6	6	7
136	7	7	8	12	16	16	15	20	17	20	17	18	16	11	6	6	7
137	8	7	8	12	16	16	14	20	17	19	16	18	16	11	6	7	8
138	8	8	8	12	16	17	13	20	16	19	16	18	16	11	6	7	8
139	8	8	8	12	16	17	13	20	16	19	15	19	16	11	6	7	8
140	8	8	7	12	16	17	13	20	16	18	15	19	16	11	6	7	8
141	8	8	7	12	16	17	13	20	15	18	15	19	16	11	6	7	8
142	8	8	7	12	16	16	13	19	15	18	15	19	16	11	6	7	8
143	8	8	7	12	16	16	13	19	15	17	15	19	15	10	6	8	8
144	8	9	7	12	16	16	13	19	14	17	16	18	15	10	6	8	8

145	7	9	7	11	16	16	13	19	15	17	16	18	15	10	7	8	7
146	8	9	7	11	16	16	13	19	15	17	17	18	15	10	7	8	8
147	9	10	8	11	16	16	14	18	15	17	18	18	15	10	7	9	9
148	9	10	8	11	15	16	14	18	16	17	19	18	14	10	8	9	9
149	9	10	9	11	15	16	15	18	16	17	20	18	14	10	8	9	9
150	9	10	9	12	15	15	15	18	16	16	20	17	14	10	9	9	9
151	10	11	10	12	15	15	15	18	16	16	20	17	14	10	9	9	10
152	10	11	10	12	14	15	15	18	16	15	20	16	14	10	10	10	10
153	10	11	11	12	14	15	15	17	16	15	20	16	14	10	10	10	10
154	10	11	11	12	13	15	15	17	16	15	20	16	13	10	11	10	10
155	11	11	11	12	13	15	15	16	15	15	19	16	13	10	11	11	11
156	11	11	11	12	13	15	14	16	15	15	19	16	12	10	11	11	11
157	11	11	12	12	13	15	14	16	15	15	18	16	12	10	11	11	11
158	11	11	12	13	13	15	14	16	15	14	18	16	12	10	11	11	11
159	11	11	12	12	13	14	14	16	15	14	17	16	12	10	12	11	11
160	11	11	12	12	13	14	13	16	15	14	17	16	12	10	12	11	11
161	12	12	12	12	14	14	13	15	15	14	16	17	12	10	12	12	12
162	12	12	12	12	14	13	13	15	15	14	16	17	13	10	12	12	12
163	12	12	12	12	14	13	13	15	15	14	15	17	13	10	13	12	12
164	12	12	12	12	14	13	13	15	15	14	15	18	13	11	13	12	12
165	12	12	12	12	14	13	13	15	15	14	15	18	13	11	13	12	12
166	12	12	13	12	14	14	13	15	14	14	15	18	13	11	13	12	12
167	12	13	13	12	14	14	13	15	15	14	16	19	13	11	14	11	12
168	12	13	14	12	15	15	14	17	18	17	18	20	14	12	14	12	12
169	12	14	15	13	15	15	15	18	19	18	19	21	14	13	15	13	12
170	13	15	16	13	16	16	15	18	20	19	20	21	14	13	15	14	13
171	14	15	16	14	17	16	16	18	20	19	20	21	15	14	16	15	14
172	15	16	16	14	17	17	16	18	20	19	19	21	15	14	16	15	15
173	16	16	16	14	17	16	16	18	19	19	19	21	15	14	16	15	16
174	16	16	17	14	17	16	16	18	19	19	19	20	15	15	16	15	16
175	16	16	17	15	17	16	16	18	18	19	18	20	16	15	17	16	16
176	16	16	17	15	16	16	16	17	18	18	18	20	16	16	17	16	16
177	17	16	17	15	16	16	16	17	17	18	17	19	16	16	17	16	17
178	16	16	17	15	15	15	16	16	17	17	16	19	15	16	17	16	16
179	16	16	18	15	15	15	15	16	16	17	16	18	15	16	16	16	16
180	16	16	16	16	16	16	16	16	16	16	16	16	16	16	16	16	16

Luminaire Report Summary

IESNA:LM-63-2002
[TEST]
[TESTDATE] 2016-09-11
[TESTLAB] Standard-Tech Co. Ltd
[ISSUEDATE] 2016-09-11 21:07:16
[MANUFAC] SARIN Energy Inc.
[LUMINAIRE] SES-SBN-3000-240 277V
[_LAMPPOSITION] 0,0
[_TOTALLUMINAIRELUMENS] 30961
[OTHER] EVERFINE GO-R5000_V2 SYSTEMGamma(deg) Fz(lm) Ft(lm) %Lum %Lamp0- 10 764.63
764.63 2.47 2.4710- 20 2193.50 2958.14 9.55 9.5520- 30 3435.84 6393.98 20.65
20.6530- 40 4468.12 10862.09 35.08 35.0840- 50 5306.92 16169.01 52.22 52.2250- 60
5883.39 22052.41 71.22 71.2260- 70 5504.23 27556.63 89.00 89.0070- 80 3189.97
30746.61 99.31 99.3180- 90 145.85 30892.46 99.78 99.7890-100 5.95 30898.41 99.80
99.80100-110 9.37 30907.78 99.83 99.83110-120 11.88 30919.66 99.86 99.86120-130
11.86 30931.52 99.90 99.90130-140 10.34 30941.85 99.94 99.94140-150 8.17 30950.03
99.96 99.96150-160 6.19 30956.22 99.98 99.98160-170 3.89 30960.11 99.99 99.99170-
180 1.59 30961.70 100.00 100.00

FILE: CREATED USING ABSOLUTE PHOTOMETRY
FILE: CANDELA MULTIPLIER: 1
FILE: VERTICAL ANGLES: 181, HORIZONTAL ANGLES: 17
FILE: COORDINATE SYSTEM: TYPE C
FILE: UNIT OF MEASURE: METRIC
FILE: BALLAST FACTOR: 1

Photometrics Pro 1.3.29 copyright 2003-2019 by jSolutions, Inc.
Reported data calculated from manufacturer's data file, based on IES recommended methods.