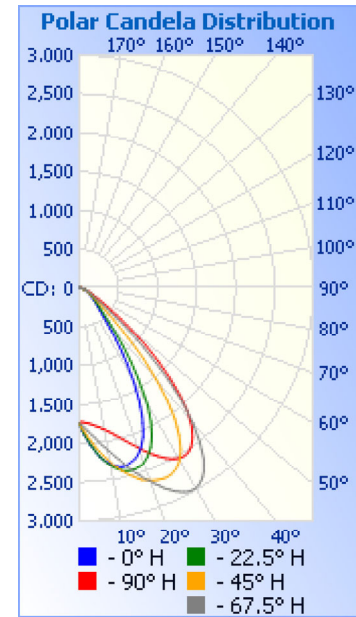


Photometrics Pro

Luminaire Photometric Report

Filename: Wall Pack WP05 35W - 120V
Manufacturer: SARIN Energy Inc.
Luminaire: SES-WP05-4000-35 120V
Lamp Output: Total luminaire Lumens: 3940.3
Max Candela: 2,985.6 at Horizontal: 67.5°, Vertical: 29°
Input Wattage: 34.2
Luminous Opening: Point
Test: 01
Test Date: 2017/05/08
Test Lab: Standard-Tech Co. Ltd
Photometry : Type C
Nema Type: 6 X 6

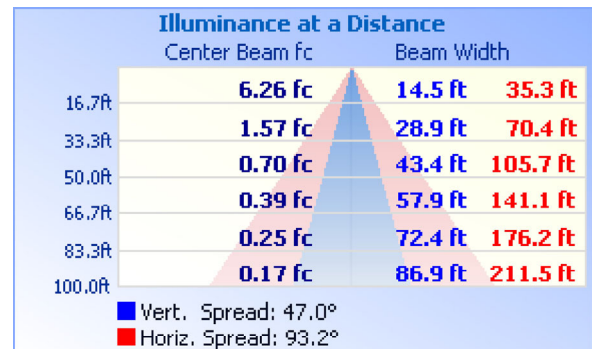
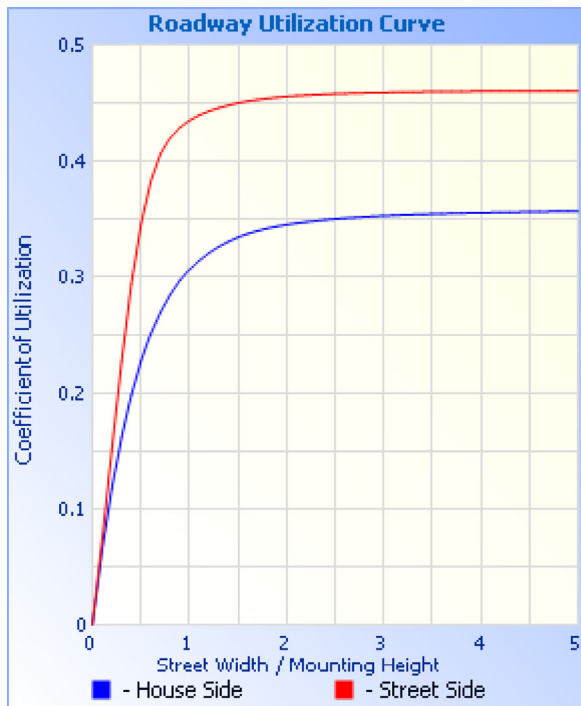
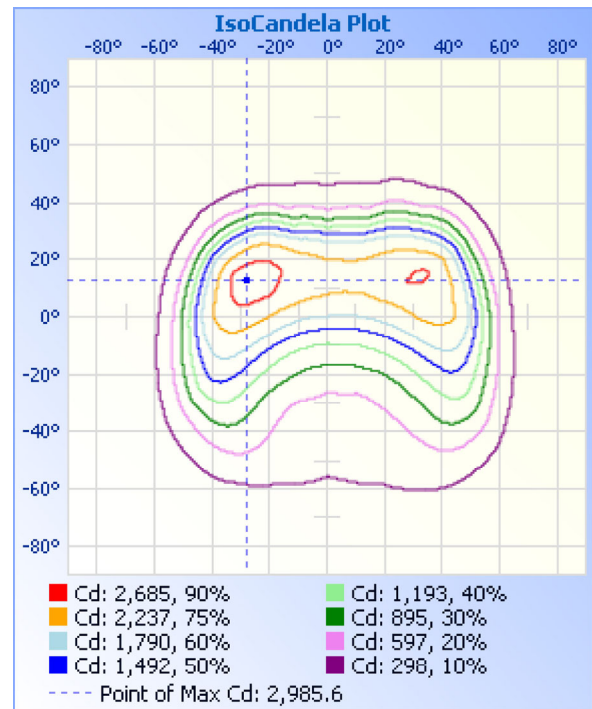
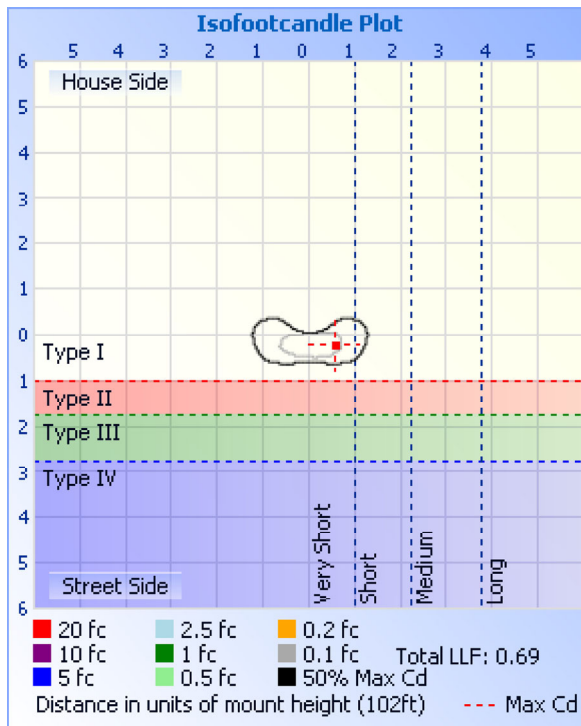


Roadway Summary		
Cutoff Classification:	CUTOFF	
Distribution:	TYPE I, VERY SHORT	
Max Cd, 90 Deg Vert:	4.4	
Max Cd, 80 to <90 Deg:	87.3	
	Lumens	% Lamp
Downward Street Side:	2,234.8	56.7%
Downward House Side:	1,701.5	43.2%
Downward Total:	3,936.3	99.9%
Upward Street Side:	1.8	0%
Upward House Side:	2.7	0.1%
Upward Total:	4.5	0.1%
Total Lumens:	3,940.8	100%

Flood Summary				
	Efficiency	Lumens	Horizontal Spread	Vertical Spread
Field (10%):	91.8%	3,617.8	119.7	104
Beam (50%):	54.7%	2,155.2	93.2	47
Total:	100%	3,939.5		

Zonal Lumen Summary		
Zone	Lumens	% Luminaire
0-30	1,477.1	37.5%
0-40	2,403.8	61%
0-60	3,617.6	91.8%
60-90	318.2	8.1%
70-100	111.1	2.8%
90-120	1.3	0%
0-90	3,935.8	99.9%
90-180	4.5	0.1%
0-180	3,940.3	100%

Lumens Per Zone					
Zone	Lumens	% Total	Zone	Lumens	% Total
0-10	167.7	4.3%	90-100	0.6	0%
10-20	504.9	12.8%	100-110	0.3	0%
20-30	804.5	20.4%	110-120	0.4	0%
30-40	926.7	23.5%	120-130	0.5	0%
40-50	767.4	19.5%	130-140	0.7	0%
50-60	446.4	11.3%	140-150	0.8	0%
60-70	207.7	5.3%	150-160	0.7	0%
70-80	90.0	2.3%	160-170	0.4	0%
80-90	20.5	0.5%	170-180	0.2	0%



Coefficients Of Utilization - Zonal Cavity Method

Effective Floor Cavity Reflectance: 20%

RCC %:	80				70				50			30			10			0
RW %:	70	50	30	0	70	50	30	0	50	30	20	50	30	20	50	30	20	0
RCR: 0	1.19	1.19	1.19	1.19	1.16	1.16	1.16	1.00	1.11	1.11	1.11	1.06	1.06	1.06	1.02	1.02	1.02	1.00
1	1.11	1.07	1.04	1.01	1.08	1.05	1.02	.89	1.01	.98	.96	.97	.95	.93	.93	.92	.90	.88
2	1.03	.96	.90	.86	1.00	.94	.89	.78	.91	.87	.83	.88	.84	.81	.85	.82	.79	.77
3	.95	.86	.79	.74	.93	.85	.78	.69	.82	.76	.72	.79	.75	.71	.77	.73	.70	.68

4	.88	.78	.70	.64	.86	.77	.69	.61	.74	.68	.63	.72	.67	.62	.70	.65	.62	.60
5	.82	.70	.63	.57	.80	.69	.62	.55	.67	.61	.56	.66	.60	.55	.64	.59	.55	.53
6	.76	.64	.56	.50	.74	.63	.56	.49	.62	.55	.50	.60	.54	.49	.58	.53	.49	.47
7	.71	.59	.51	.45	.69	.58	.50	.44	.56	.50	.45	.55	.49	.44	.54	.48	.44	.42
8	.66	.54	.46	.41	.65	.53	.46	.40	.52	.45	.40	.51	.45	.40	.50	.44	.40	.38
9	.62	.50	.42	.37	.61	.49	.42	.36	.48	.41	.37	.47	.41	.37	.46	.40	.36	.35
10	.58	.46	.39	.34	.57	.45	.38	.33	.45	.38	.34	.44	.38	.33	.43	.37	.33	.32

Candela Table - Type C																	
	0	22.5	45	67.5	90	112.5	135	157.5	180	202.5	225	247.5	270	292.5	315	337.5	360
0	1745	1745	1745	1745	1745	1745	1745	1745	1745	1745	1745	1745	1745	1745	1745	1745	1745
1	1831	1828	1810	1771	1727	1705	1698	1692	1692	1697	1694	1702	1717	1753	1786	1815	1831
2	1905	1900	1856	1800	1736	1688	1659	1626	1619	1626	1649	1677	1714	1773	1836	1882	1905
3	1960	1955	1913	1837	1743	1669	1612	1572	1559	1570	1594	1646	1713	1800	1884	1932	1960
4	2028	2022	1959	1868	1755	1654	1566	1508	1487	1503	1552	1623	1713	1822	1922	1994	2028
5	2081	2075	2018	1909	1766	1638	1530	1445	1431	1436	1500	1596	1714	1851	1970	2042	2081
6	2142	2137	2076	1944	1781	1623	1488	1396	1364	1385	1452	1570	1717	1882	2008	2099	2142
7	2197	2195	2122	1989	1798	1613	1454	1337	1300	1323	1413	1551	1722	1906	2053	2150	2197
8	2235	2238	2178	2036	1813	1600	1414	1293	1251	1276	1368	1528	1727	1939	2097	2187	2235
9	2274	2287	2222	2075	1835	1591	1376	1240	1192	1220	1332	1507	1736	1964	2130	2229	2274
10	2301	2323	2276	2125	1853	1580	1348	1191	1137	1168	1290	1491	1745	1998	2170	2257	2301
11	2332	2361	2330	2168	1879	1572	1314	1154	1096	1128	1251	1472	1754	2025	2201	2288	2332
12	2351	2386	2370	2222	1901	1566	1289	1110	1048	1081	1220	1458	1767	2061	2236	2307	2351
13	2366	2411	2419	2268	1932	1566	1259	1078	1011	1046	1184	1442	1778	2098	2262	2324	2366
14	2370	2429	2457	2327	1966	1563	1232	1039	967	1003	1157	1427	1794	2128	2292	2335	2370
15	2364	2438	2501	2388	1994	1558	1211	1002	926	963	1125	1416	1812	2167	2319	2338	2364
16	2347	2443	2534	2439	2032	1555	1186	975	894	932	1101	1403	1828	2198	2338	2337	2347
17	2331	2442	2572	2501	2064	1554	1168	941	856	894	1072	1394	1849	2238	2359	2331	2331
18	2313	2434	2606	2553	2106	1555	1146	915	826	866	1045	1383	1868	2271	2373	2316	2313
19	2287	2423	2618	2615	2141	1559	1127	884	790	832	1025	1376	1893	2312	2387	2300	2287
20	2245	2402	2645	2652	2185	1564	1112	860	762	805	1000	1367	1913	2354	2397	2274	2245
21	2206	2372	2663	2711	2231	1568	1095	831	729	773	981	1360	1940	2387	2405	2240	2206
22	2146	2342	2673	2756	2269	1572	1083	803	702	742	959	1356	1970	2430	2409	2208	2146
23	2090	2294	2682	2812	2315	1579	1068	780	671	719	941	1351	1994	2464	2410	2160	2090
24	2011	2250	2689	2852	2351	1589	1056	752	641	689	921	1349	2026	2507	2407	2114	2011
25	1921	2185	2687	2896	2393	1598	1043	731	618	667	901	1346	2052	2540	2401	2049	1921
26	1839	2124	2679	2926	2426	1606	1032	705	591	640	885	1345	2086	2581	2389	1988	1839
27	1727	2036	2661	2956	2463	1615	1021	685	570	619	867	1345	2112	2613	2376	1904	1727
28	1631	1957	2644	2980	2490	1624	1010	661	545	595	852	1345	2147	2638	2356	1830	1631
29	1504	1848	2608	2986	2517	1637	1002	642	527	576	836	1347	2175	2667	2335	1729	1504
30	1398	1753	2570	2985	2535	1646	993	619	506	554	823	1349	2211	2700	2304	1641	1398
31	1264	1627	2512	2973	2547	1657	986	599	490	537	808	1353	2239	2721	2273	1525	1264
32	1157	1494	2455	2944	2549	1666	978	583	472	518	797	1357	2272	2743	2226	1429	1157
33	1028	1385	2370	2906	2543	1678	972	564	456	500	784	1361	2301	2758	2182	1306	1028
34	931	1247	2292	2858	2524	1685	966	550	444	486	771	1367	2321	2765	2119	1206	931
35	820	1138	2182	2788	2500	1690	962	534	430	471	762	1372	2342	2765	2061	1084	820
36	740	1008	2083	2718	2458	1691	958	522	420	460	750	1379	2354	2756	1978	968	740
37	653	910	1946	2605	2415	1690	953	509	409	447	741	1384	2365	2739	1903	880	653
38	577	798	1827	2508	2351	1687	949	497	401	438	731	1390	2369	2712	1798	780	577
39	526	718	1668	2376	2290	1681	945	488	392	427	722	1396	2367	2665	1685	708	526
40	472	630	1535	2263	2202	1667	942	477	384	418	712	1400	2355	2620	1586	629	472
41	435	569	1367	2110	2120	1647	936	470	378	411	703	1404	2339	2546	1457	573	435
42	398	504	1233	1977	2003	1626	931	462	372	404	696	1406	2309	2476	1349	513	398
43	373	461	1070	1799	1901	1594	923	455	367	399	688	1405	2276	2374	1211	472	373
44	346	416	917	1650	1766	1562	913	448	361	393	682	1403	2222	2279	1102	428	346
45	329	386	805	1463	1653	1514	903	442	357	389	674	1399	2169	2147	970	399	329
46	309	355	682	1284	1507	1471	888	437	352	384	668	1390	2091	2029	871	368	309

47	294	334	599	1134	1389	1410	876	431	346	379	660	1380	1999	1868	757	347	294
48	275	312	512	1001	1244	1340	855	427	342	376	651	1362	1915	1732	676	325	275
49	260	292	455	846	1129	1279	831	421	338	372	644	1345	1800	1556	588	309	260
50	243	277	397	735	991	1199	809	415	334	369	635	1318	1698	1412	527	290	243
51	227	260	358	612	862	1131	780	409	330	366	627	1285	1563	1232	463	272	227
52	215	247	319	527	768	1042	754	402	324	362	615	1253	1423	1092	420	259	215
53	198	233	293	439	663	951	718	396	318	360	602	1207	1308	927	374	243	198
54	188	222	266	383	587	878	686	386	310	356	591	1165	1166	777	343	232	188
55	177	209	247	326	502	788	644	377	302	351	576	1106	1054	672	310	218	177
56	168	199	227	290	443	719	600	364	291	344	562	1041	922	559	283	207	168
57	158	187	210	256	379	635	564	350	279	335	544	984	800	484	264	194	158
58	148	175	197	234	336	558	519	338	268	326	522	911	709	408	242	182	148
59	140	167	183	211	289	502	483	320	252	314	504	851	607	359	227	173	140
60	132	156	172	192	258	438	439	303	240	302	480	774	533	311	209	161	132
61	125	147	160	179	225	394	397	280	224	285	460	712	453	280	197	153	125
62	117	136	152	165	199	344	366	256	208	265	432	637	385	248	183	142	117
63	110	126	141	155	182	311	331	238	198	248	403	566	338	227	171	134	110
64	103	119	130	143	164	276	306	218	186	227	380	512	289	206	161	125	103
65	97	109	121	132	152	246	278	201	177	212	351	449	257	187	150	117	97
66	92	102	108	124	139	227	252	189	171	196	328	404	224	174	141	108	92
67	87	93	97	114	130	206	232	177	163	182	301	354	198	159	129	100	87
68	83	86	85	106	120	189	210	168	157	173	279	310	180	149	120	93	83
69	76	78	77	97	112	176	189	158	150	163	252	280	162	136	106	85	76
70	72	71	68	89	105	162	172	148	143	154	226	248	150	127	94	79	72
71	68	60	60	80	98	151	152	141	137	146	208	227	137	116	85	70	68
72	66	52	55	72	92	138	138	132	130	138	186	203	125	106	74	61	66
73	65	46	48	65	85	125	122	123	124	131	166	183	117	98	67	54	65
74	62	39	43	57	79	115	109	115	118	123	151	169	108	88	59	47	62
75	58	33	37	51	72	103	99	107	112	115	135	152	99	80	54	42	58
76	50	27	32	44	66	91	87	100	107	108	120	137	93	71	47	34	50
77	39	20	26	38	60	81	77	91	100	100	109	125	85	64	40	29	39
78	25	16	21	32	53	70	70	83	93	92	96	111	79	57	35	23	25
79	14	11	16	26	46	58	62	76	88	86	87	98	71	49	30	17	14
80	8	7	11	22	38	49	56	67	81	77	77	87	64	43	25	12	8
81	4	4	7	17	32	39	48	58	74	69	67	75	57	36	19	7	4
82	2	2	3	12	25	32	39	50	68	62	61	64	50	31	14	4	2
83	1	1	1	7	18	27	33	41	60	53	52	54	42	25	9	2	1
84	1	1	1	3	13	20	25	33	51	46	43	44	36	21	5	1	1
85	0	0	0	1	7	14	18	27	43	37	36	38	29	15	2	1	0
86	0	0	0	0	4	8	12	19	33	29	29	30	21	10	1	0	0
87	0	0	0	0	1	3	7	14	23	23	21	23	16	5	1	0	0
88	0	0	0	0	0	2	3	7	15	15	14	17	9	2	0	0	0
89	0	0	0	0	0	1	2	3	7	8	9	10	4	1	0	0	0
90	0	0	0	0	0	1	1	2	3	4	4	4	1	0	0	0	0
91	0	0	0	0	0	1	1	1	2	2	2	2	1	0	0	0	0
92	0	0	0	0	0	1	1	1	1	1	1	1	1	0	0	0	0
93	0	0	0	0	0	1	1	1	1	1	1	1	1	0	0	0	0
94	0	0	0	0	0	1	1	1	1	1	1	1	1	0	0	0	0
95	0	0	0	0	0	1	1	1	1	1	1	1	1	0	0	0	0

96	0	0	0	0	0	1	1	1	1	1	1	1	1	0	0	0	0
97	0	0	0	0	0	1	1	1	1	1	1	1	1	0	0	0	0
98	0	0	0	0	0	1	0	1	1	1	1	1	0	0	0	0	0
99	0	0	0	0	0	0	0	0	1	1	1	1	0	0	0	0	0
100	0	0	0	0	0	1	0	0	1	1	1	0	0	0	0	0	0
101	0	0	0	0	0	0	0	0	0	0	0	0	0	0	0	0	0
102	0	0	0	0	0	0	0	0	0	0	0	0	0	0	0	0	0
103	0	0	0	0	0	0	0	0	0	0	0	0	0	0	0	0	0
104	0	0	0	0	0	0	0	0	0	0	0	0	0	0	0	0	0
105	0	0	0	0	0	0	0	0	0	0	0	0	0	0	0	0	0
106	0	0	0	0	0	0	0	0	0	0	0	0	0	0	0	0	0
107	0	0	0	0	0	0	0	0	0	0	0	0	0	0	0	0	0
108	0	0	0	0	0	0	0	0	0	0	0	0	0	0	0	0	0
109	0	0	0	0	0	0	0	0	0	0	0	0	0	0	0	0	0
110	0	0	0	0	0	1	0	0	0	0	0	0	0	0	0	0	0
111	0	0	0	0	0	1	0	0	0	0	0	0	0	0	0	0	0
112	0	0	0	0	0	1	0	0	0	0	0	0	0	0	0	0	0
113	0	0	0	0	0	1	0	0	0	0	0	0	0	0	0	0	0
114	0	0	0	1	0	1	0	0	0	0	0	0	0	0	0	0	0
115	0	0	0	1	0	1	1	0	0	0	0	0	1	0	0	0	0
116	0	0	0	0	0	1	0	0	0	0	0	1	0	0	0	0	0
117	0	0	0	1	1	1	0	0	0	0	0	1	1	0	0	0	0
118	0	0	0	1	1	1	1	0	0	0	0	1	1	0	0	0	0
119	0	0	0	1	1	1	1	0	0	0	0	0	1	0	0	0	0
120	0	0	0	1	1	1	1	0	0	0	0	1	1	0	0	0	0
121	0	0	0	1	1	1	1	0	0	0	0	1	1	1	0	0	0
122	0	0	1	1	1	1	1	0	0	0	1	1	1	1	0	0	0
123	0	0	1	1	1	1	1	0	0	0	1	1	1	1	0	0	0
124	0	0	1	1	1	1	1	0	0	0	1	1	1	1	0	0	0
125	0	0	1	1	1	1	1	0	0	0	1	1	1	1	0	0	0
126	0	0	1	1	1	1	1	0	0	0	1	1	1	1	1	0	0
127	0	0	1	1	1	1	1	1	0	0	1	1	1	1	1	0	0
128	0	0	1	1	1	1	1	1	0	1	1	1	1	1	1	0	0
129	0	0	1	1	1	1	1	1	0	1	1	1	1	1	1	0	0
130	0	0	1	1	1	1	1	1	0	1	1	1	1	1	1	0	0
131	0	0	1	1	1	1	1	1	0	1	1	1	1	1	1	0	0
132	0	0	1	1	1	1	1	1	1	1	1	1	1	1	1	0	0
133	0	0	1	1	1	1	1	1	1	1	1	1	1	1	1	0	0
134	0	0	1	1	1	1	1	1	1	1	1	1	1	1	1	0	0
135	0	0	1	1	1	1	1	1	1	1	1	1	1	1	1	0	0
136	0	0	1	1	1	1	1	1	1	1	1	1	1	1	1	0	0
137	0	1	1	1	1	1	1	1	1	1	1	1	1	1	1	0	0
138	0	0	1	1	1	1	1	1	1	1	1	1	1	1	1	0	0
139	0	1	1	1	1	2	1	1	1	1	1	1	2	1	1	0	0
140	0	0	1	1	1	2	1	1	1	1	1	1	2	1	1	1	0
141	0	1	1	1	1	2	1	1	1	1	1	1	2	1	1	1	0
142	0	1	1	1	2	2	1	1	1	1	1	1	2	1	1	1	0
143	1	1	1	1	2	2	1	1	1	1	1	2	2	1	1	1	1
144	1	1	1	1	2	2	1	1	1	1	1	2	2	1	1	1	1

145	1	1	1	1	2	2	1	1	1	1	2	2	2	1	1	1	1
146	1	1	1	1	2	2	2	1	1	1	1	2	2	1	1	1	1
147	1	1	1	1	2	2	2	1	1	1	1	2	2	1	1	1	1
148	1	1	1	1	2	2	2	1	1	1	2	2	2	1	1	1	1
149	1	1	1	1	2	2	2	2	1	2	2	2	2	1	1	1	1
150	1	1	1	1	2	2	2	2	2	2	2	2	2	1	1	1	1
151	1	1	1	1	2	2	2	2	2	2	2	2	2	1	1	1	1
152	1	1	1	1	2	2	2	2	2	2	2	2	2	1	1	1	1
153	1	1	1	1	2	2	2	2	2	2	2	2	2	1	1	1	1
154	1	1	1	1	2	2	2	2	2	2	2	2	2	1	1	1	1
155	1	1	1	1	2	2	2	2	2	2	2	2	2	1	1	1	1
156	1	1	1	1	1	2	2	2	2	2	2	2	2	2	1	1	1
157	1	1	1	1	2	2	2	2	2	2	2	2	2	2	1	1	1
158	1	1	1	1	2	2	2	2	2	2	2	2	2	2	1	1	1
159	1	1	1	1	1	2	2	2	2	2	2	2	2	2	1	1	1
160	1	1	1	1	1	2	2	2	2	2	2	2	2	2	1	1	1
161	1	1	1	1	1	2	2	2	2	2	2	2	2	2	1	1	1
162	1	1	1	1	1	2	2	2	2	2	2	2	2	2	1	1	1
163	1	1	1	1	1	2	2	2	2	2	2	2	2	2	1	1	1
164	1	1	1	1	1	2	2	2	2	2	2	2	2	2	1	1	1
165	1	1	1	1	1	2	2	2	2	2	2	2	2	2	2	1	1
166	1	1	1	1	1	2	2	2	2	2	2	2	2	2	2	1	1
167	1	1	1	1	1	2	2	2	2	2	2	2	2	2	2	1	1
168	1	1	1	1	1	2	2	2	2	2	2	2	2	2	2	2	1
169	1	1	1	1	1	2	2	2	2	2	2	2	2	2	2	1	1
170	1	1	1	1	1	2	2	2	2	2	2	2	2	2	2	2	1
171	2	1	1	1	1	2	2	2	2	2	2	2	2	2	2	2	2
172	2	1	1	2	1	2	2	2	2	2	2	2	2	2	2	2	2
173	2	2	2	1	2	2	2	2	2	2	2	2	2	2	2	2	2
174	2	2	2	2	1	2	2	2	2	2	2	2	2	2	2	2	2
175	2	2	2	2	2	2	2	2	2	2	2	2	2	2	2	2	2
176	2	2	2	2	2	2	2	2	2	2	2	2	2	2	2	2	2
177	2	2	2	2	2	2	2	2	2	2	2	2	2	2	2	2	2
178	2	2	2	2	2	2	2	2	2	2	2	2	2	2	2	2	2
179	2	2	2	2	2	2	2	2	2	2	2	2	2	2	2	2	2
180	2	2	2	2	2	2	2	2	2	2	2	2	2	2	2	2	2

Luminaire Report Summary

IESNA:LM-63-2002
[TEST] 01
[TESTDATE] 2017/05/08
[TESTLAB] Standard-Tech Co. Ltd
[ISSUE DATE]
[MANUFAC] SARIN Energy Inc.
[LUMINAIRE] SES-WP05-4000-35 120V
[_TOTALLUMINAIRELUMENS] 3940.3

FILE: CREATED USING ABSOLUTE PHOTOMETRY
FILE: CANDELA MULTIPLIER: 1
FILE: VERTICAL ANGLES: 181, HORIZONTAL ANGLES: 17
FILE: COORDINATE SYSTEM: TYPE C
FILE: UNIT OF MEASURE: METRIC
FILE: BALLAST FACTOR: 1

Photometrics Pro 1.3.29 copyright 2003-2019 by jSolutions, Inc.
Reported data calculated from manufacturer's data file, based on IES recommended methods.