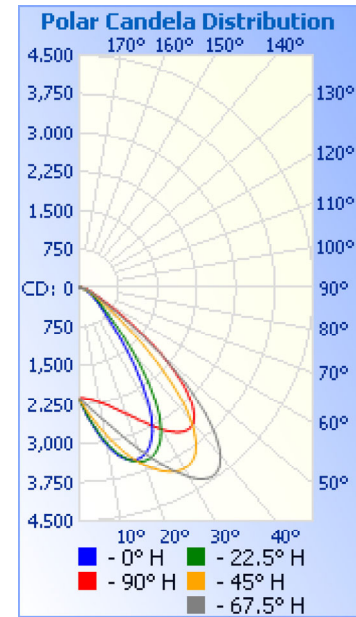


Photometrics Pro

Luminaire Photometric Report

Filename: Wall Pack WP05 55W - 120V
Manufacturer: SARIN Energy Inc.
Luminaire: SES-WP05-4000-55 120V
Lamp Output: Total luminaire Lumens: 6113.9
Max Candela: 4,459.3 at Horizontal: 67.5°, Vertical: 35°
Input Wattage: 52.5
Luminous Opening: Point
Test: 01
Test Date: 2017/05/08
Test Lab: Standard-Tech Co. Ltd
Photometry : Type C
Nema Type: 6 X 6



Roadway Summary

Cutoff Classification:	CUTOFF	
Distribution:	TYPE I, VERY SHORT	
Max Cd, 90 Deg Vert:	3.6	
Max Cd, 80 to <90 Deg:	124.3	
	Lumens	% Lamp
Downward Street Side:	3,692.3	60.4%
Downward House Side:	2,415.8	39.5%
Downward Total:	6,108.1	99.9%
Upward Street Side:	2.5	0%
Upward House Side:	3.9	0.1%
Upward Total:	6.4	0.1%
Total Lumens:	6,114.6	100%

Flood Summary

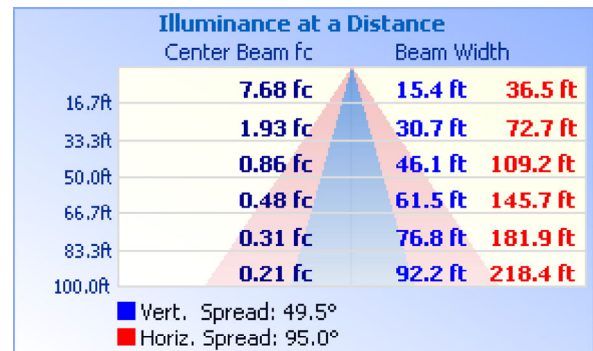
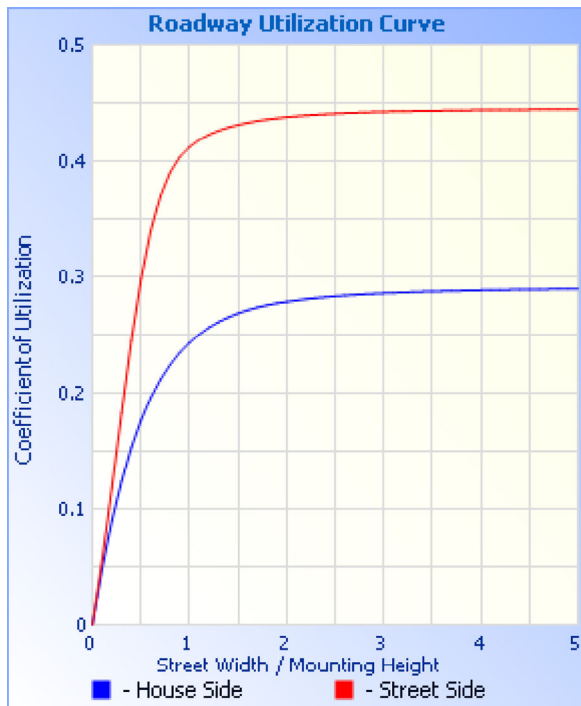
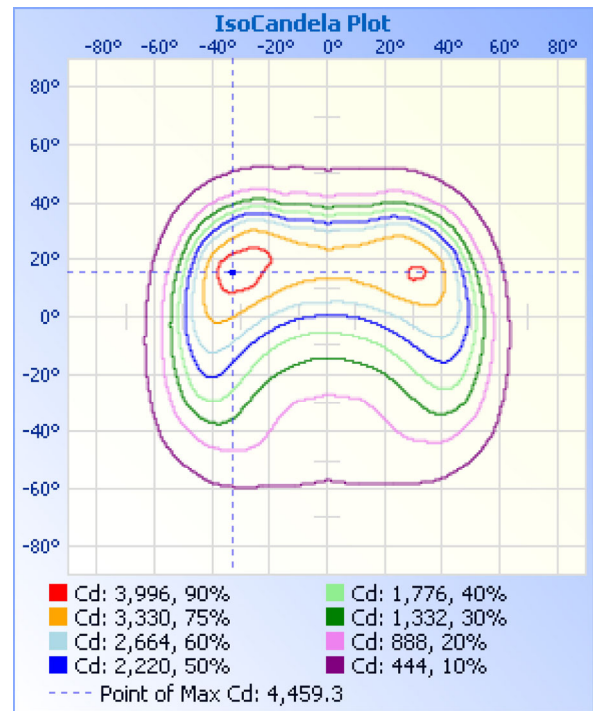
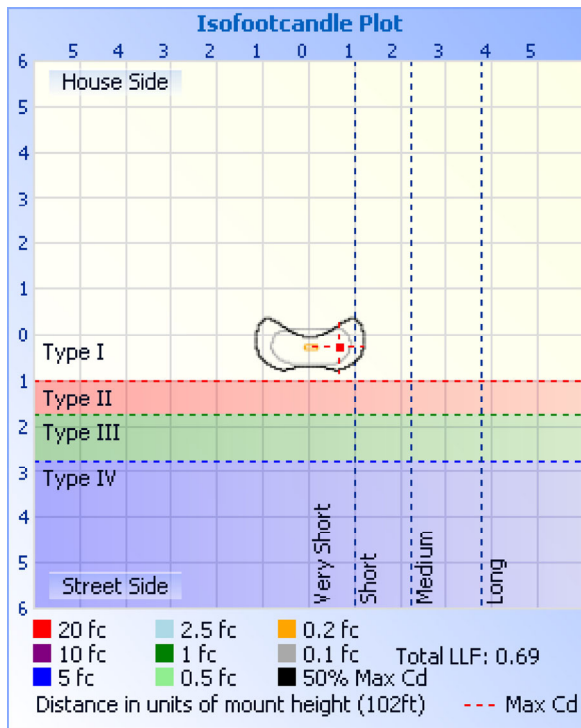
	Efficiency	Lumens	Horizontal Spread	Vertical Spread
Field (10%):	92.1%	5,631.2	123	110.4
Beam (50%):	53.3%	3,259.0	95	49.5
Total:	100%	6,112.1		

Zonal Lumen Summary

Zone	Lumens	% Luminaire
0-30	2,046.3	33.5%
0-40	3,522.6	57.6%
0-60	5,580.5	91.3%
60-90	526.9	8.6%
70-100	188.7	3.1%
90-120	1.7	0%
0-90	6,107.4	99.9%
90-180	6.4	0.1%
0-180	6,113.9	100%

Lumens Per Zone

Zone	Lumens	% Total	Zone	Lumens	% Total
0-10	210.8	3.4%	90-100	0.7	0%
10-20	674.8	11.0%	100-110	0.5	0%
20-30	1,160.8	19.0%	110-120	0.6	0%
30-40	1,476.3	24.1%	120-130	0.8	0%
40-50	1,312.4	21.5%	130-140	1.0	0%
50-60	745.6	12.2%	140-150	1.1	0%
60-70	339.0	5.5%	150-160	0.9	0%
70-80	154.7	2.5%	160-170	0.6	0%
80-90	33.3	0.5%	170-180	0.2	0%



Coefficients Of Utilization - Zonal Cavity Method

Effective Floor Cavity Reflectance: 20%

RCC %:	80				70				50			30			10			0
RW %:	70	50	30	0	70	50	30	0	50	30	20	50	30	20	50	30	20	0
RCR: 0	1.19	1.19	1.19	1.19	1.16	1.16	1.16	1.00	1.11	1.11	1.11	1.06	1.06	1.06	1.02	1.02	1.02	1.00
1	1.11	1.07	1.03	1.00	1.08	1.05	1.01	.89	1.00	.98	.95	.97	.95	.93	.93	.91	.90	.88
2	1.02	.95	.90	.85	1.00	.94	.88	.77	.90	.86	.82	.87	.83	.80	.84	.81	.78	.76
3	.94	.85	.78	.73	.92	.84	.77	.68	.81	.75	.71	.78	.73	.69	.76	.72	.68	.66

4	.87	.77	.69	.63	.85	.75	.68	.60	.73	.67	.62	.71	.65	.61	.69	.64	.60	.58
5	.81	.69	.61	.55	.79	.68	.60	.53	.66	.59	.54	.64	.58	.54	.62	.57	.53	.51
6	.75	.63	.54	.49	.73	.62	.54	.47	.60	.53	.48	.58	.52	.48	.57	.51	.47	.45
7	.69	.57	.49	.43	.68	.56	.48	.42	.55	.48	.43	.53	.47	.42	.52	.46	.42	.40
8	.65	.52	.44	.39	.63	.51	.44	.38	.50	.43	.38	.49	.43	.38	.48	.42	.38	.36
9	.60	.48	.40	.35	.59	.47	.40	.34	.46	.39	.35	.45	.39	.34	.44	.38	.34	.33
10	.57	.44	.37	.32	.55	.44	.36	.31	.43	.36	.31	.42	.36	.31	.41	.35	.31	.29

Candela Table - Type C

	0	22.5	45	67.5	90	112.5	135	157.5	180	202.5	225	247.5	270	292.5	315	337.5	360
0	2141	2141	2141	2141	2141	2141	2141	2141	2141	2141	2141	2141	2141	2141	2141	2141	2141
1	2242	2250	2224	2175	2127	2081	2070	2072	2072	2092	2092	2107	2124	2144	2190	2229	2242
2	2342	2325	2282	2207	2131	2055	2011	1993	2004	2013	2045	2082	2126	2185	2261	2322	2342
3	2443	2419	2354	2247	2138	2026	1964	1934	1922	1937	1986	2054	2130	2227	2319	2396	2443
4	2529	2517	2415	2283	2148	2005	1912	1865	1848	1882	1944	2032	2135	2262	2395	2493	2529
5	2618	2598	2495	2330	2157	1981	1863	1800	1791	1815	1894	2007	2143	2308	2459	2574	2618
6	2709	2681	2560	2381	2171	1959	1826	1751	1725	1766	1847	1985	2151	2349	2541	2659	2709
7	2818	2768	2627	2424	2184	1944	1784	1694	1674	1706	1812	1968	2163	2401	2610	2740	2818
8	2903	2873	2715	2480	2202	1927	1753	1651	1615	1651	1770	1951	2176	2444	2678	2844	2903
9	3007	2953	2784	2528	2223	1912	1716	1599	1557	1609	1730	1938	2188	2501	2769	2926	3007
10	3087	3049	2857	2590	2241	1903	1682	1550	1513	1558	1700	1924	2205	2561	2842	3024	3087
11	3177	3124	2947	2625	2267	1893	1656	1512	1460	1509	1664	1912	2224	2611	2913	3096	3177
12	3242	3195	3018	2693	2289	1886	1625	1467	1419	1470	1637	1904	2243	2661	3000	3182	3242
13	3316	3277	3107	2752	2321	1880	1596	1423	1369	1424	1603	1894	2268	2717	3073	3248	3316
14	3368	3334	3181	2827	2348	1875	1573	1388	1322	1388	1572	1887	2289	2791	3160	3322	3368
15	3409	3400	3272	2888	2383	1873	1547	1346	1285	1344	1547	1880	2318	2849	3227	3373	3409
16	3449	3447	3342	2971	2422	1872	1527	1314	1239	1310	1518	1875	2342	2927	3308	3427	3449
17	3473	3493	3426	3043	2455	1875	1502	1274	1204	1268	1495	1872	2373	2993	3374	3462	3473
18	3489	3521	3491	3134	2499	1878	1484	1243	1160	1229	1468	1869	2408	3078	3452	3491	3489
19	3486	3548	3571	3207	2536	1882	1462	1205	1127	1198	1447	1869	2436	3147	3509	3515	3486
20	3481	3563	3634	3304	2588	1887	1445	1176	1086	1161	1422	1870	2474	3214	3561	3524	3481
21	3459	3568	3691	3386	2619	1896	1425	1141	1047	1132	1398	1873	2506	3304	3626	3528	3459
22	3432	3564	3760	3471	2676	1903	1407	1107	1017	1096	1380	1877	2548	3379	3674	3522	3432
23	3382	3550	3813	3575	2725	1915	1393	1081	982	1069	1358	1882	2582	3467	3724	3503	3382
24	3334	3524	3872	3659	2790	1927	1376	1050	954	1035	1341	1887	2625	3539	3758	3474	3334
25	3260	3494	3912	3769	2842	1940	1363	1025	922	1010	1320	1894	2664	3628	3796	3442	3260
26	3188	3441	3955	3858	2894	1956	1347	996	897	979	1304	1901	2713	3700	3822	3388	3188
27	3101	3389	3984	3965	2965	1970	1335	973	868	955	1285	1909	2751	3769	3840	3334	3101
28	2979	3329	4010	4047	3022	1991	1321	947	847	928	1271	1918	2799	3849	3854	3250	2979
29	2869	3237	4030	4129	3092	2010	1311	926	821	901	1253	1930	2839	3907	3855	3169	2869
30	2713	3149	4032	4226	3145	2037	1299	903	798	881	1240	1940	2886	3976	3848	3054	2713
31	2562	3024	4030	4294	3213	2058	1289	880	781	858	1223	1954	2923	4022	3832	2951	2562
32	2382	2912	4017	4364	3265	2087	1282	863	760	840	1209	1968	2959	4067	3800	2833	2382
33	2231	2756	3987	4406	3313	2115	1274	844	745	820	1197	1980	3000	4089	3759	2675	2231
34	2037	2604	3949	4444	3364	2139	1268	830	728	804	1183	1994	3026	4103	3711	2524	2037
35	1882	2423	3898	4459	3396	2168	1261	813	715	786	1173	2006	3052	4105	3634	2345	1882
36	1692	2273	3819	4456	3428	2190	1256	801	699	770	1160	2018	3066	4089	3554	2198	1692
37	1547	2079	3739	4428	3442	2216	1250	786	685	758	1150	2026	3076	4049	3435	2009	1547
38	1378	1923	3615	4388	3445	2233	1245	772	675	744	1139	2034	3077	4002	3325	1821	1378
39	1255	1732	3498	4311	3433	2252	1241	762	663	733	1127	2038	3065	3939	3167	1674	1255
40	1116	1585	3332	4227	3411	2265	1235	750	654	722	1118	2039	3042	3835	3023	1500	1116
41	1018	1413	3181	4122	3365	2272	1231	742	643	710	1106	2036	3000	3729	2866	1371	1018
42	911	1287	3012	3969	3307	2274	1225	731	635	702	1096	2029	2958	3572	2653	1222	911
43	838	1143	2783	3824	3215	2267	1219	723	626	693	1083	2014	2886	3429	2456	1115	838
44	759	1041	2568	3621	3129	2246	1211	714	617	685	1071	1996	2813	3225	2226	995	759
45	706	929	2321	3437	2999	2222	1199	705	610	677	1056	1968	2729	3042	2040	912	706
46	648	852	2118	3188	2877	2185	1188	698	601	670	1038	1938	2605	2849	1812	821	648

47	599	769	1869	2979	2739	2133	1171	689	594	662	1022	1893	2487	2572	1594	758	599
48	565	700	1676	2755	2539	2080	1153	681	584	653	1001	1838	2362	2365	1431	691	565
49	526	652	1451	2448	2386	2003	1128	671	577	646	983	1787	2193	2102	1246	645	526
50	497	600	1287	2230	2187	1933	1098	660	566	635	957	1713	2054	1894	1114	594	497
51	462	563	1107	1979	2022	1840	1070	650	553	626	929	1647	1875	1643	968	557	462
52	436	521	982	1716	1815	1734	1032	635	540	614	905	1556	1690	1409	868	515	436
53	406	491	849	1519	1612	1642	1000	623	521	602	872	1457	1544	1238	760	485	406
54	383	457	759	1294	1456	1522	956	606	504	585	845	1374	1366	1048	687	451	383
55	356	433	664	1094	1274	1422	918	589	481	564	808	1266	1233	916	610	420	356
56	337	404	587	953	1142	1297	870	564	456	545	769	1178	1079	776	557	397	337
57	316	383	536	803	992	1199	819	537	436	518	737	1070	964	684	500	370	316
58	300	358	482	704	883	1079	778	514	409	495	695	964	833	589	460	350	300
59	282	339	445	602	762	965	727	482	388	462	661	884	719	527	417	327	282
60	268	317	405	536	677	880	687	454	363	427	617	789	640	464	386	309	268
61	251	301	376	469	586	782	637	419	341	400	582	719	554	422	352	288	251
62	234	281	344	426	523	711	587	387	326	369	538	639	495	378	328	272	234
63	222	265	321	381	456	632	550	363	309	346	497	569	434	348	301	253	222
64	207	247	296	351	411	563	506	338	297	323	465	519	383	315	281	238	207
65	196	229	278	319	365	516	473	321	284	303	424	464	350	293	258	220	196
66	183	215	257	296	333	464	435	302	271	288	392	426	315	267	236	203	183
67	173	199	236	272	302	429	398	288	261	272	354	384	293	245	219	190	173
68	162	186	220	250	282	390	369	271	248	259	326	355	269	229	196	174	162
69	152	171	199	234	261	358	335	256	238	244	293	323	249	211	178	161	152
70	144	159	182	215	244	334	310	243	225	229	263	294	233	198	158	146	144
71	134	144	162	202	231	308	279	229	212	216	242	273	215	181	144	135	134
72	126	131	148	186	213	289	251	214	202	201	218	247	200	166	128	120	126
73	118	120	131	173	200	268	230	202	191	187	196	224	180	147	113	105	118
74	113	104	120	156	184	246	206	188	180	176	180	205	163	129	102	93	113
75	106	92	106	142	171	228	189	174	172	162	160	180	150	116	89	80	106
76	98	79	93	126	155	205	170	162	161	151	141	161	135	101	79	70	98
77	90	69	84	111	141	186	150	148	153	137	128	138	121	90	68	58	90
78	77	58	72	100	131	162	136	134	143	123	112	118	110	77	59	50	77
79	61	47	64	87	119	140	120	123	133	112	100	103	96	68	48	40	61
80	41	39	53	77	109	124	105	109	124	99	86	85	82	57	38	30	41
81	27	29	45	66	96	105	94	98	112	85	72	70	72	46	30	22	27
82	14	22	35	57	86	86	81	85	100	73	61	60	58	38	20	13	14
83	6	13	26	47	73	73	68	71	88	59	49	48	48	28	13	7	6
84	3	6	18	38	60	61	59	59	70	45	37	38	34	21	6	3	3
85	1	3	10	30	49	50	46	46	53	35	25	26	22	10	3	1	1
86	1	1	5	22	36	41	36	33	39	23	16	14	13	4	1	1	1
87	1	1	2	14	26	29	25	24	22	14	8	7	4	1	1	1	1
88	1	0	1	5	15	20	14	13	12	6	4	2	1	1	1	1	1
89	0	0	1	1	6	10	8	6	5	3	2	1	1	1	1	0	0
90	0	1	0	1	2	4	3	3	2	2	1	1	1	1	0	0	0
91	0	0	0	1	1	2	2	1	1	1	1	1	1	1	1	0	0
92	0	0	0	1	1	1	1	1	1	1	1	1	1	1	0	0	0
93	0	0	0	0	1	1	1	1	1	1	1	1	1	1	0	0	0
94	0	0	0	0	0	1	1	1	1	1	1	1	1	0	0	0	0
95	0	0	0	0	0	1	1	1	1	1	1	1	1	0	0	0	0

96	0	0	0	0	0	1	1	1	1	1	1	1	1	0	0	0	0
97	0	0	0	0	0	1	1	1	1	1	1	1	1	0	0	0	0
98	0	0	0	0	0	1	1	1	1	1	1	1	1	0	0	0	0
99	0	0	0	0	0	1	1	1	1	1	1	1	1	0	0	0	0
100	0	0	0	0	0	1	1	1	1	1	1	1	1	0	0	0	0
101	0	0	0	0	0	1	1	1	1	1	1	1	1	0	0	0	0
102	0	0	0	0	0	1	1	1	1	1	1	1	1	0	0	0	0
103	0	0	0	0	0	1	1	1	1	1	1	1	1	0	0	0	0
104	0	0	0	0	0	1	1	1	1	1	1	1	1	0	0	0	0
105	0	0	0	0	0	1	1	1	1	1	1	1	1	0	0	0	0
106	0	0	0	0	0	1	1	0	1	1	1	1	1	0	0	0	0
107	0	0	0	0	0	1	1	1	0	1	1	1	1	0	0	0	0
108	0	0	0	0	0	1	1	1	0	1	1	1	1	0	0	0	0
109	0	0	0	0	0	1	1	1	1	0	1	1	1	0	0	0	0
110	0	0	0	0	0	1	1	1	1	0	1	1	1	0	0	0	0
111	0	0	0	0	0	1	1	1	1	0	1	1	1	1	0	0	0
112	0	0	0	1	1	1	1	0	1	0	1	1	1	0	0	0	0
113	0	0	0	1	0	1	1	0	0	0	1	1	1	1	0	0	0
114	0	0	0	1	1	1	1	0	0	1	1	1	1	1	0	0	0
115	0	0	1	1	1	1	1	0	1	1	1	1	1	1	1	0	0
116	0	0	0	1	1	1	1	1	1	1	1	1	1	1	1	0	0
117	0	0	0	1	1	1	1	1	0	1	1	1	1	1	1	0	0
118	0	0	1	1	1	1	1	1	0	1	1	1	1	1	1	0	0
119	0	0	1	1	1	1	1	1	1	1	1	1	1	1	1	0	0
120	0	0	1	1	1	1	1	1	0	1	1	1	1	1	1	0	0
121	0	0	1	1	1	1	1	1	0	1	1	1	1	1	1	0	0
122	0	0	1	1	1	1	1	1	1	1	1	1	1	1	1	0	0
123	0	0	1	1	1	1	1	1	1	1	1	1	1	1	1	0	0
124	0	1	1	1	1	1	1	1	1	1	1	1	1	1	1	1	0
125	0	1	1	1	1	1	1	1	1	1	1	1	1	1	1	1	0
126	0	0	1	1	1	1	1	1	1	1	1	1	1	1	1	1	0
127	1	1	1	1	1	1	1	1	1	1	1	2	2	1	1	1	1
128	1	1	1	1	1	1	1	1	1	1	1	2	2	1	1	1	1
129	0	1	1	1	1	2	1	1	1	1	1	2	2	1	1	1	0
130	1	1	1	1	1	2	1	1	1	1	1	2	2	1	1	1	1
131	1	1	1	1	1	2	1	1	1	1	1	2	2	1	1	1	1
132	1	1	1	1	2	2	2	1	1	1	2	2	2	1	1	1	1
133	1	1	1	1	2	2	2	1	1	1	2	2	2	1	1	1	1
134	1	1	1	1	2	2	2	1	1	1	2	2	2	1	1	1	1
135	1	1	1	1	2	2	2	1	1	1	2	2	2	1	1	1	1
136	1	1	1	1	2	2	2	1	1	1	2	2	2	1	1	1	1
137	1	1	1	1	2	2	2	1	1	1	2	2	2	1	1	1	1
138	1	1	1	1	2	2	2	2	1	2	2	2	2	1	1	1	1
139	1	1	1	2	2	2	2	2	2	2	2	2	2	1	1	1	1
140	1	1	1	2	2	2	2	2	2	2	2	2	2	1	1	1	1
141	1	1	1	2	2	2	2	2	2	2	2	2	2	2	1	1	1
142	1	1	1	2	2	2	2	2	2	2	2	2	3	2	1	1	1
143	1	1	1	2	2	2	2	2	2	2	2	2	3	2	1	1	1
144	1	1	1	2	2	2	2	2	2	2	2	2	3	2	1	1	1

145	1	1	1	2	2	2	2	2	2	2	2	2	3	2	1	1	1
146	1	1	1	2	2	3	2	2	2	2	2	2	3	2	1	1	1
147	1	1	1	2	2	3	2	2	2	2	2	3	3	2	1	1	1
148	1	1	1	2	2	3	2	2	2	2	2	3	3	2	1	1	1
149	1	1	1	2	2	3	2	2	2	2	2	2	3	2	1	1	1
150	1	1	1	2	2	3	2	2	3	2	2	3	3	2	1	1	1
151	1	1	1	2	2	3	2	2	3	2	3	2	3	2	1	1	1
152	1	1	1	2	2	3	2	2	3	3	3	3	3	2	1	1	1
153	1	1	1	2	2	3	2	2	3	3	3	3	3	2	2	1	1
154	1	1	1	2	2	3	2	2	3	3	3	2	3	2	2	1	1
155	1	1	1	2	2	3	2	2	3	3	2	2	2	2	2	1	1
156	1	1	1	2	2	3	2	2	3	3	3	3	2	2	2	1	1
157	1	1	1	2	2	3	2	3	3	3	3	2	2	2	2	1	1
158	1	1	1	2	2	2	2	2	3	3	2	2	2	2	2	1	1
159	1	1	1	2	2	2	2	2	3	3	2	2	2	2	2	1	1
160	1	1	1	2	2	3	2	2	3	3	2	2	2	2	2	2	1
161	1	1	2	2	2	2	2	3	3	3	2	2	2	2	2	1	1
162	1	1	2	2	2	3	2	3	3	3	2	2	2	2	2	2	1
163	2	1	2	2	2	2	2	3	3	3	2	2	2	2	2	2	2
164	2	1	2	2	2	3	2	2	3	3	2	2	2	2	2	2	2
165	2	2	2	2	2	3	2	3	3	3	2	2	2	2	2	2	2
166	2	2	2	2	2	2	2	3	3	3	2	2	2	2	2	2	2
167	2	2	2	2	2	2	2	3	3	3	2	2	2	2	2	2	2
168	2	2	2	2	2	2	2	3	3	3	2	2	2	2	2	2	2
169	2	2	2	2	2	2	3	3	3	2	2	2	2	2	2	2	2
170	2	2	2	2	2	2	3	3	3	3	2	2	2	2	2	2	2
171	2	2	2	2	2	3	2	3	3	2	2	2	2	3	2	2	2
172	2	2	2	2	2	2	3	3	2	2	2	2	2	2	2	2	2
173	2	2	2	2	2	3	3	2	3	2	2	2	2	3	2	2	2
174	2	2	2	2	2	3	3	3	2	2	2	2	2	3	2	2	2
175	2	2	2	2	2	3	3	3	2	2	2	2	2	3	2	2	2
176	2	2	2	2	2	3	3	3	3	2	2	2	2	3	3	2	2
177	2	2	2	2	2	3	3	3	3	2	2	2	2	3	3	3	2
178	3	2	2	2	2	3	3	3	3	2	2	2	2	3	3	3	3
179	3	2	2	2	2	3	3	3	3	2	2	2	2	3	3	3	3
180	2	2	2	2	2	2	2	2	2	2	2	2	2	2	2	2	2

Luminaire Report Summary

IESNA:LM-63-2002
[TEST] 01
[TESTDATE] 2017/05/08
[TESTLAB] Standard-Tech Co. Ltd
[ISSUE DATE]
[MANUFAC] SARIN Energy Inc.
[LUMINAIRE] SES-WP05-4000-55 120V
[_TOTALLUMINAIRELUMENS] 6113.9

FILE: CREATED USING ABSOLUTE PHOTOMETRY
FILE: CANDELA MULTIPLIER: 1
FILE: VERTICAL ANGLES: 181, HORIZONTAL ANGLES: 17
FILE: COORDINATE SYSTEM: TYPE C
FILE: UNIT OF MEASURE: METRIC
FILE: BALLAST FACTOR: 1

Photometrics Pro 1.3.29 copyright 2003-2019 by jSolutions, Inc.
Reported data calculated from manufacturer's data file, based on IES recommended methods.