


TECHNICAL SPECIFICATIONS

Watts	3W	7.5W	12W
Lumens	± 54	± 135	± 216
Size	See Diagrams	 CCT	RGB + 3000K + 4000K + 6000K
Voltage	DC24V	IP Rating	IP65 (Water Resistant)
Dimming	DMX512	Materials	Aluminum, PMMA
Beam Angle	120°	Finish	White
CRI	≥85	Lens	Frosted
PF	>0.9	Lifespan	30,000 hours

SARIN's LED RGBW Smart Rails are commonly used in place of neon flex and rope light. These area lights are safe for outdoor use and protected from rain, snow, and weak jets of water, such as sprinklers.

Smart Rails are programmable in sections which allows for a wide variety of light patterns, modes and colors. It has a low profile and bars connect end-to-end to minimize seams. The light body has excellent heat dissipation with 6063 aluminum to fully ensure stability and long lifespan. The diffuser is made from durable and UV-resistant PMMA.

OVERVIEW

- Applications:** Outdoor (IP65)
- Efficacy:** 18 lm/W
- Dimming:** DMX512
- Driver:** CATIYA YSD-24300-DTL
- Operating Temp:** -40° to 122° F
- Lifespan:** 30,000 hours
- Warranty:** 3 years

FEATURES

Mounting: These lights come with a surface mount bracket, and optional clips are available.

Optional Accessories:

- DMX512
- DMX512 Signal Amplifier - 28"
- T Connector Cables - 9" x 6"
- 300W Driver
- Mounting Clips





ORDER FORM

Custom housing colors available upon request.

Custom Model Assembly

Fixture	CCT (K)	Watts (W)	Beam Angle	Voltage	Mounting	Accessories
<input type="checkbox"/> LNWW	<input type="checkbox"/> RGBW	<input type="checkbox"/> 3 <input type="checkbox"/> 7.5 <input type="checkbox"/> 12	<input type="checkbox"/> 120°	<input type="checkbox"/> 24V	A Surface Mount B Clips	C T Cable D 300W Driver E DMX512 F DMX512 Amplifier

SES-LNWW-RGBW-3-A-C-D-E

EXAMPLE MODEL NUMBER

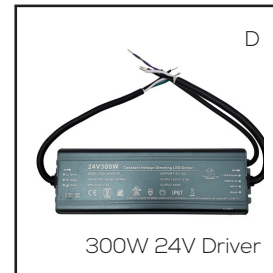
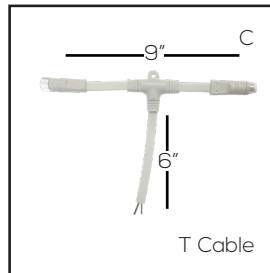
QUANTITY

SES-LNWW-

MODEL NUMBER

QUANTITY

ACCESSORIES



COMMON STOCK MODELS

Item Code	Model Number	Item Code	Model Number
11230	SES-LNWW-RGBW-3	41230-B	SES-LNWW-CABLE
11231	SES-LNWW-RGBW-7.5	41230-C	SES-LNWW-DMX-AMP
11232	SES-LNWW-RGBW-12	40929-A	SES-DMX-CONTROLLER
41230-A	YSD-24300-DTL		



INSTRUCTIONS

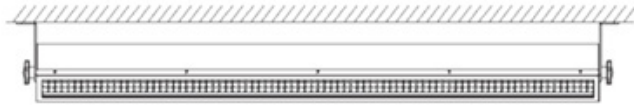
Installation:

Methods: This fixture can be set up on a flat surface or hanged on the wall or under a ceiling. If you want to hang it, please be sure that you will fix the screw to the wall or ceiling very carefully to avoid any problem.

a) Flat surface installation



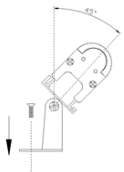
b) Hanging installation



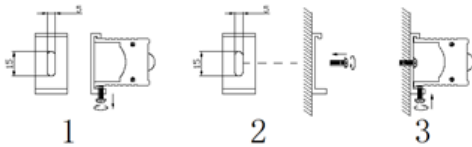
DMX512 Fixture Note:

1. This fixture uses UCS512C4 DMX chips, please use a suitable DMX address setting machine which can support UCS512C4 chips to write address. Please follow the wiring diagram to connect DMX fixtures, so that their PI/PO works.
2. Connect conjoining fixtures together by connecting the male and female cord ends to each other, then turning clockwise until the connection is secured. To increase the distance between fixtures
3. Ensure the last fixture in the series has a termination end cap attached to the tail wire (female end).

Surface



Clips



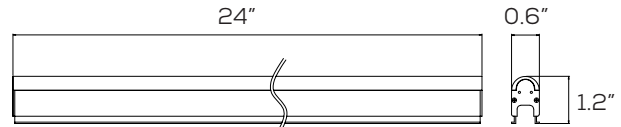
Wiring diagram

Red --- DC24V+
 Yellow --- A
 Blue ---- B
 Green--- PI/PO
 Black --- GND

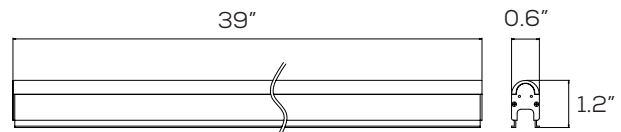
DIMENSIONS



3W

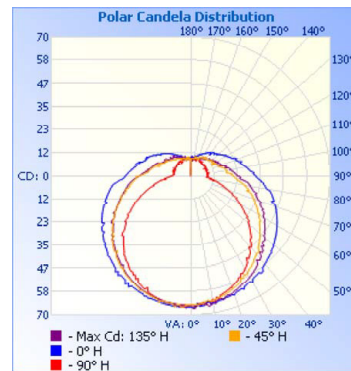


7.5W



12W

ISOLUX DIAGRAM



Center Beam fc	Illuminance at a Distance	
	Beam Width	Beam Width
17.0ft	0.23 fc	777.6 ft 56.5 ft
34.0ft	0.06 fc	1,555.2 ft 113.0 ft
51.0ft	0.03 fc	2,332.8 ft 169.5 ft
68.0ft	0.01 fc	3,110.4 ft 226.0 ft
85.0ft	0.01 fc	3,888.1 ft 282.5 ft
102.0ft	0.01 fc	4,665.7 ft 339.0 ft

Vert. Spread: 175.0°
 Horiz. Spread: 117.9°

12W



INSTRUCTIONS CONTINUED

