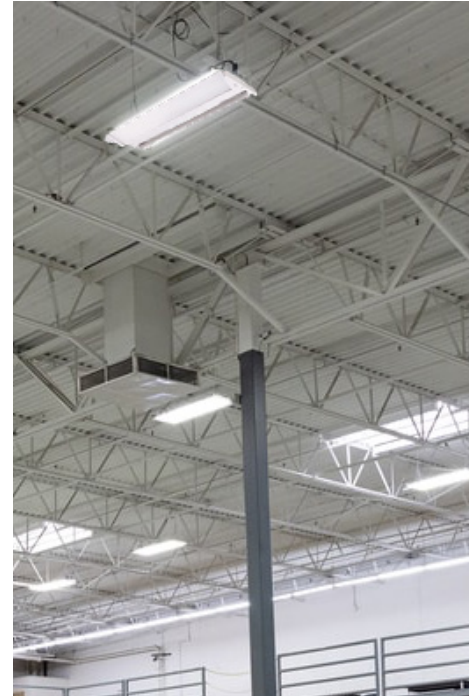




PHB10 CCT LINEAR HIGH BAY

Project: _____ Type: _____

Name: _____ Date: _____



130W/150W/165W	130W 16,900-18,200lm	150W 19,500-21,000lm	165W 21,450-23,100lm
255W/275W/320W	255W 33,150-35,700lm	275W 35,750-33,880lm	320W 41,600-44,800lm

Size	see dimensions	CCT	4000K - 5000K
Voltage	120-277V	IP Rating	IP20
Dimming	0-10V	Materials	Iron, Aluminum
Beam Angle	90°	Finish	White
CRI	>80	Lens	Frosted
PF	≥ 0.9	Lifespan	50,000 Hours

OVERVIEW

- CCT:** 4000K - 5000K
- Applications:** IP20
- Efficacy:** 130-140lm/W
- Dimming:** 0-10V
- LED Type:** Lumileds 2835
- Lens Type:** Frosted
- Driver:** LF-FAA320 & LF-FAA150
- Operating Temp:**
-40F° to 122F° without motion sensor
or emergency driver
-22F° to 122F° with motion sensor
32F° to 122F° with emergency backup
- Operating Humidity:** 20% - 90%RH
- Lifespan:** 50,000 Hours
- Warranty:** 5 Years

FEATURES

- Bright light with up to 320W and up to 43,500lm
- Comes with chain mounts and pre-installed motion sensor base

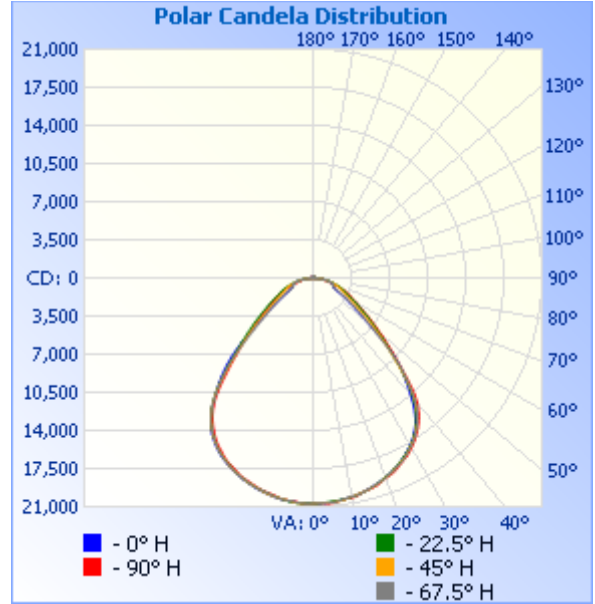
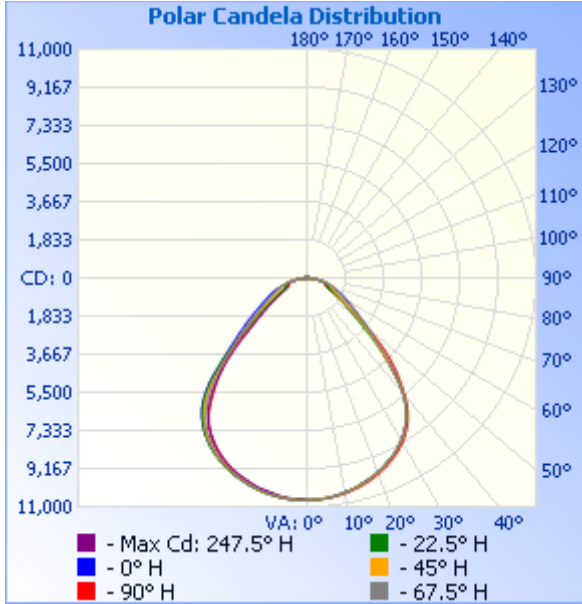




PHOTOMETRICS:

Low Wattage

High Wattage



Illuminance at a Distance

	Center Beam fc	Beam Width	
4.3ft	577 fc	8.8 ft	8.8 ft
8.7ft	141 fc	17.9 ft	17.8 ft
13.0ft	63.1 fc	26.7 ft	26.6 ft
17.3ft	35.7 fc	35.5 ft	35.4 ft
21.7ft	22.7 fc	44.6 ft	44.4 ft
26.0ft	15.8 fc	53.4 ft	53.2 ft

■ Vert. Spread: 91.5°
■ Horiz. Spread: 91.3°

Illuminance at a Distance

	Center Beam fc	Beam Width	
4.3ft	1,120 fc	8.8 ft	8.7 ft
8.7ft	274 fc	17.9 ft	17.7 ft
13.0ft	122 fc	26.7 ft	26.4 ft
17.3ft	69.2 fc	35.6 ft	35.1 ft
21.7ft	44.0 fc	44.6 ft	44.0 ft
26.0ft	30.6 fc	53.5 ft	52.8 ft

■ Vert. Spread: 91.6°
■ Horiz. Spread: 90.8°



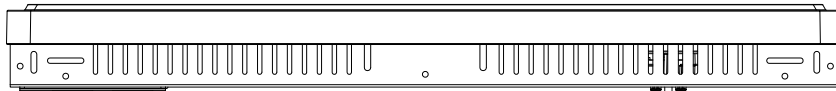
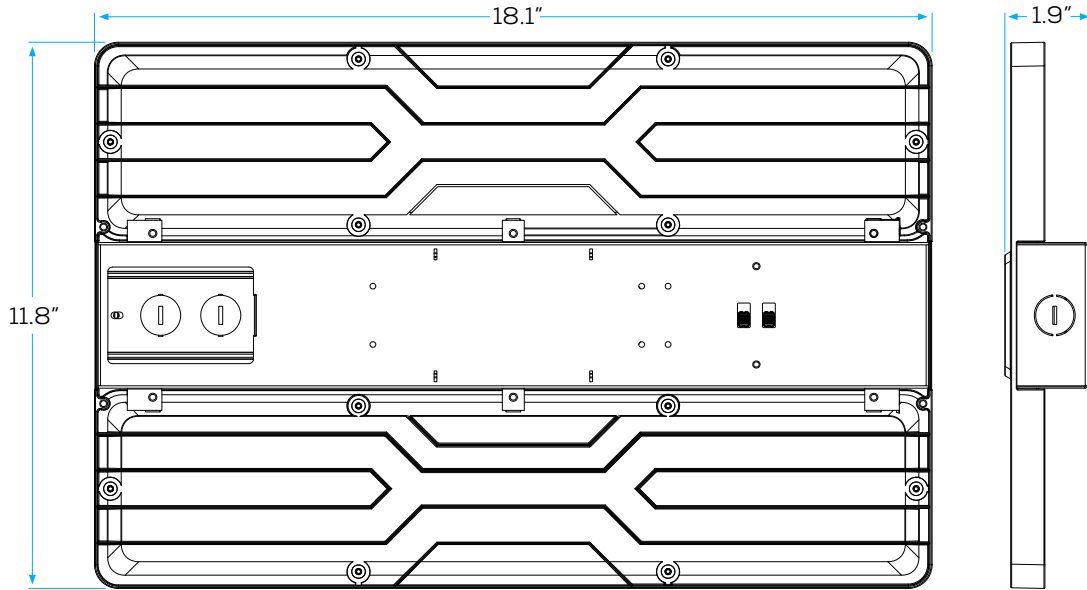
PHB10 | CCT LINEAR HIGH BAY

Project: _____ Type: _____

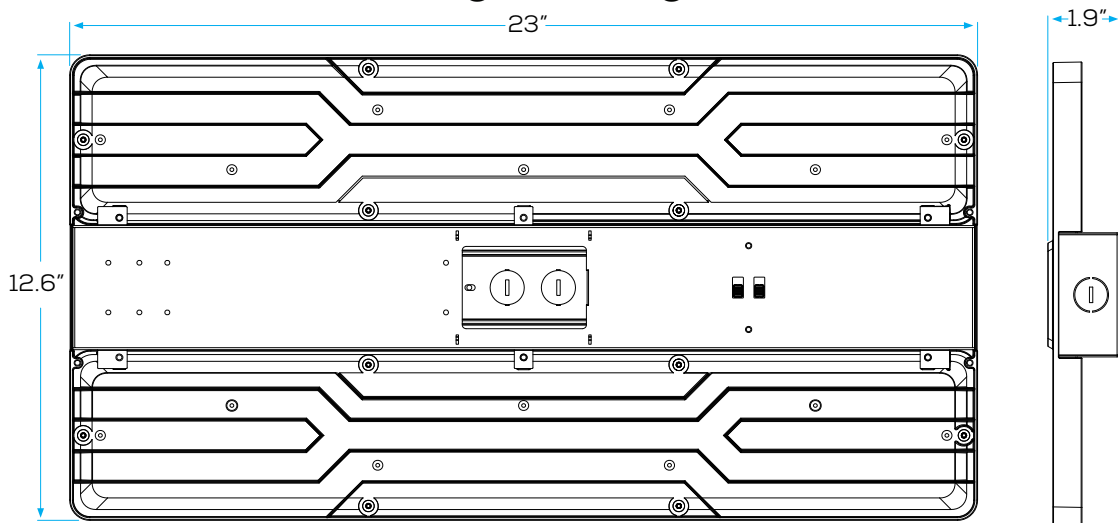
Name: _____ Date: _____

DIMENSIONS:

Low Wattage



High Wattage





PHB10 | CCT LINEAR HIGH BAY

Project: _____ Type: _____

Name: _____ Date: _____

ORDER FORM:

(*) Special Order/Not Commonly Stocked

Custom Model Assembly

Fixture

PHB10

CCT

Tunable

Watts

130W-150W-165W

255W-275W-320W

Voltage

120-277V

SES-PHB10-CCT-LW
Example Model Number

SES – PHB10 – Tunable –

–120-277V

Quantity

Fixture

CCT

Wattage Adjustable

Voltage

Common Stock Models:

Item #	Model #
11350	SES-PHB10-CCT-LW
11351	SES-PHB10-CCT-HW

Optional Accessories:

Item #	Model #	QTY:
11115-A	HB01DMS	
11345-C	SES-REMOTE-CONTROLLER	
11348-A	YH36A-16WL-300	
11350-A	SES-PHB10-LW-PENDANT	
11350-B	SES-PHB10-LW-GUARD	

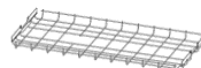
Item #	Model #	QTY:
11350-C	SES-PHB10-LW-SURFACE	
11350-D	SES-PHB10-CHAIN	
11351-A	SES-PHB10-HW-PENDANT	
11351-B	SES-PHB10-HW-GUARD	
11351-C	SES-PHB10-SURFACE	



Surface Mount



Pendant Mount



Wire Guard



Chain