



ML07

TEMPERED GLASS CCT MIRROR LIGHT

Project: _____ Type: _____

Name: _____ Date: _____



OVERVIEW

Tunable: 2700K-4500K-6500K

Applications: Indoor IP44

Efficacy: 158lm/W

Dimming: Touch

LED Type: SMD 2835

Lens Type: Crystal

Heater: Anti-Fog

Lifespan: 50,000 Hours

Warranty: 3 Years

Size	30" x 40" x 2"	Lumens	6,320lm
Watts	40W	CCT	2700K-4500K-6500K
Voltage	120V	IP Rating	IP44
Dimming	Touch	Materials	Tempered Glass Mirror, Aluminum
Beam Angle	120°	Finish	Mirrored, Silver gray
CRI	90	Lens	Crystal
PF	≥ 0.9	Lifespan	50,000 hours

FEATURES

- 4mm Tempered Glass Mirror
- Adjustable Color Temperature
- Automatic Defogger
- Copper-Free, Anti-Corrosion
- Touch On / Off CCT Adjustable Control and Dimmer
- Sensor or hardwire connection
- Safety-Backed, Anti-Shatter
- Custom Shapes and Sizes
- Frosted or Crystal* Lens
- Diffused, Soft Light
- High Energy Efficiency

SARIN LED Adjustable CCT Mirror Lights are widely used as a functional decoration for restrooms in residential and commercial spaces. What sets this mirror apart from traditional mirrors is the tempered glass. Tempered glass offers a whole new level of security versus standard glass mirrors, offering impeccable durability and peace of mind when it comes to shipping and handling.

There is a heater behind the glass to prevent fog and a switch in the middle of the mirror. Available with a frosted lens, this mirror can switch between four color temperatures.





ML07

TEMPERED GLASS CCT MIRROR LIGHT

Project: _____ Type: _____

Name: _____ Date: _____

INSTRUCTIONS

BEFORE YOU START, HERE IS SOME IMPORTANT INFORMATION.

- DANGER:** Before installation, make sure the main power is cut off.
- WARNING:** Installation must be performed by a qualified licensed electrician.

IMPORTANT

- This product contains glass parts. Take care while fitting or handling to prevent personal injury or damage to the product. If the glass is broken, please stop using it and replace it from agent or manufacturer.
- Ensure the mounting surface is dry and strong enough to bear four times the weight of the product for the safe fitting.
- Special care should be taken when drilling walls to avoid hidden pipes or electrical cables.
- The product covers the outlet box and the wirings after installation.

TOOLS REQUIRED

Description	Parts Image	Description	Parts Image
Tape Measure		Drill	
Spirit Level		Cross Head Screwdriver	
Pencil		Hammer	

MAINTENANCE

- Wipe clean with a soft, dry cloth. Never use abrasives or chemical cleaners.
- Please put a soft cushion under the mirror while you take the mirror down from the wall.

STEP 1

CUT OFF THE MAIN POWER SUPPLY.

STEP 2

Place the metal 'Z' bar against the wall and mark the suitable position of the screw holes ensuring it is level.

STEP 3

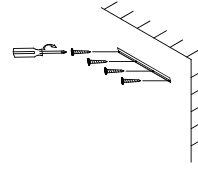
Drill the holes and put in the wall plugs for 'Z' bar.

STEP 4

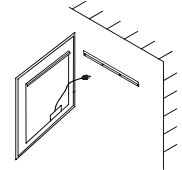
Screw the metal 'Z' bar onto the wall with the mounting screws supplied.

STEP 5

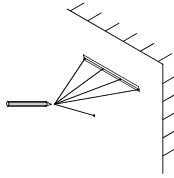
Place the mirror on a proper position so that the wires can access to the main power supply.



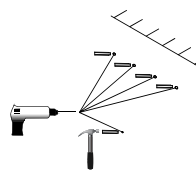
STEP 4



STEP 5



STEP 2



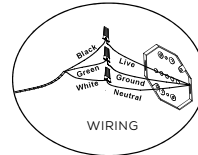
STEP 3

STEP 6

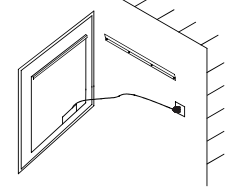
Plug the AC wire into the receptacle on the wall. OR wire as below:

Connect the wires of mirror with the main power by the wire connectors.
 BLACK WIRE --- POWER SUPPLY L (LIVE)
 WHITE WIRE --- POWER SUPPLY N (NEUTRAL)
 GREEN WIRE --- POWER SUPPLY E (EARTH)

WARNING: This mirror must be earthed.



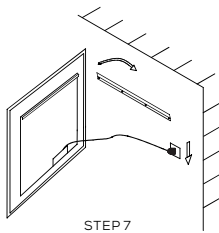
WIRING



STEP 6

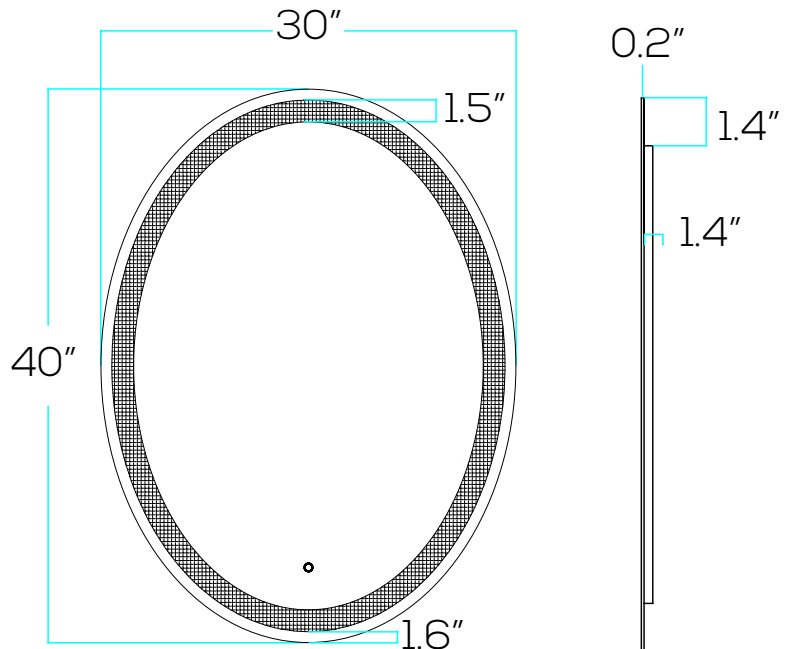
STEP 7

Hang the mirror onto the 'Z' bar until they are completely stuck.



STEP 7

DIMENSIONS



MANUAL TO LED MIRROR WITH TOUCH SENSOR

Mirror with Dimming, CCT Changing and Anti-fog

Please follow the below steps to achieve the functions.

- Switch on Light and Defogger by short-touching the button.
- Adjusting color temperatures (CCT) between warm white and cool white by long-touching the button.
- Adjusting the brightness (Dimming) by long-touching the button.
- Repeat Point 2 and 3 by long-touching the button again.
- Switch off Light and Defogger by short-touching the button.



ML07

TEMPERED
GLASS CCT
MIRROR LIGHT

Project: _____ Type: _____

Name: _____ Date: _____

ORDER FORM:

(*) Special Order/Not Commonly Stocked

Custom Model Assembly

Fixture	CCT	Watts	Beam Angle	Voltage
<input checked="" type="checkbox"/> ML07	<input checked="" type="checkbox"/> Tunable	<input checked="" type="checkbox"/> 40W	<input checked="" type="checkbox"/> 120°	<input checked="" type="checkbox"/> 120V

SES-ML07-3040-CCT-40-CT
Example Model Number

SES – ML07 – Tunable – 40W – 120° – 120V

Quantity

Fixture

CCT

Watts

Beam Angle

Voltage

Common Stock Models:

Item #	Model #
11362	SES-ML07-3040-CCT-40-CT