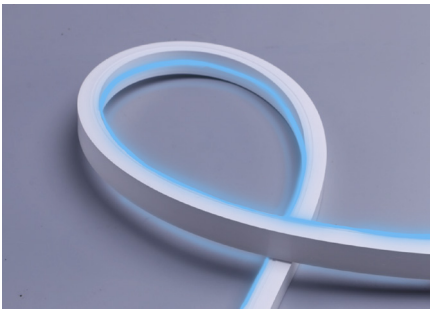




ULTRA NEON FLEX

Project: _____ Type: _____

Name: _____ Date: _____



	White	Red	Green	Blue	Amber	Pink
Top Bend	255lm/ft.	28lm/ft.	175lm/ft.	20lm/ft.	118lm/ft.	98lm/ft.
Side Bend	120lm/ft.	14lm/ft.	83lm/ft.	10lm/ft.	57lm/ft.	47lm/ft.

Size	Top Bend: 164' x 0.8" x 0.6" Side Bend: 164' x 0.4" x 0.8"	CCT	White/Red/Green/Blue/ Amber/Pink
Watts	White: 4.2W/ft. Red/Green/Blue/Amber/Pink: 3W/ft.	IP Rating	IP65
Voltage	AC110-120V	Materials	Silicone, Copper
Dimming	TRIAC	LED Qty	Top Bend (TB): 42LED/ft. Side Bend (SB): 40LED/ft.
Beam Angle	120°	Cutting Length	900TB: 2in 901SB: 1ft
CRI	White: Ra>80	Lifespan	50,000 Hours
PF	>0.9		

SARIN Ultra Neon Flex lights are commonly used in both outside and inside spaces like stairs, bridges, hotels, shopping centers, fences, and more. These Ultra Neon Flex lights have an IP65 rating and are safe for outdoor use and inclement weather.

Extremely easy to install, this flexible strip light is equipped with a quick-connect case and conduit to integrate with an existing fixture frame junction box. This light is dimmable to 10% and you can switch between three wattage settings to control your energy consumption. Get comfortable diffused light with no hot spots or dark areas.

OVERVIEW

Applications: Indoor/Outdoor IP65

Efficacy: 70-90lm/W

Dimming: TRIAC

LED Type: SMD2835

Operating Temp: -4° to 113° F

Lifespan: 50,000 hours

Warranty: 5 years (Indoors)
3 years (Outdoors)

FEATURES

- Uniform, dot-free and smooth neon light up to 164ft (50m) of run length.
- Driverless design with on-board constant current IC driver and rectifier.
- Direct AC power supply with external driver.
- Thick silicone jacket insures electrical safety by ETL and RoHS standards.
- Environmentally-friendly silicone, bend flexibility, impact resistant and inclement weather resistant
- Advanced silicone extrusion technology



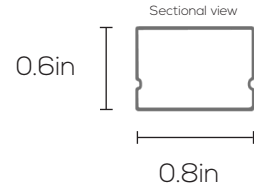


ULTRA NEON FLEX

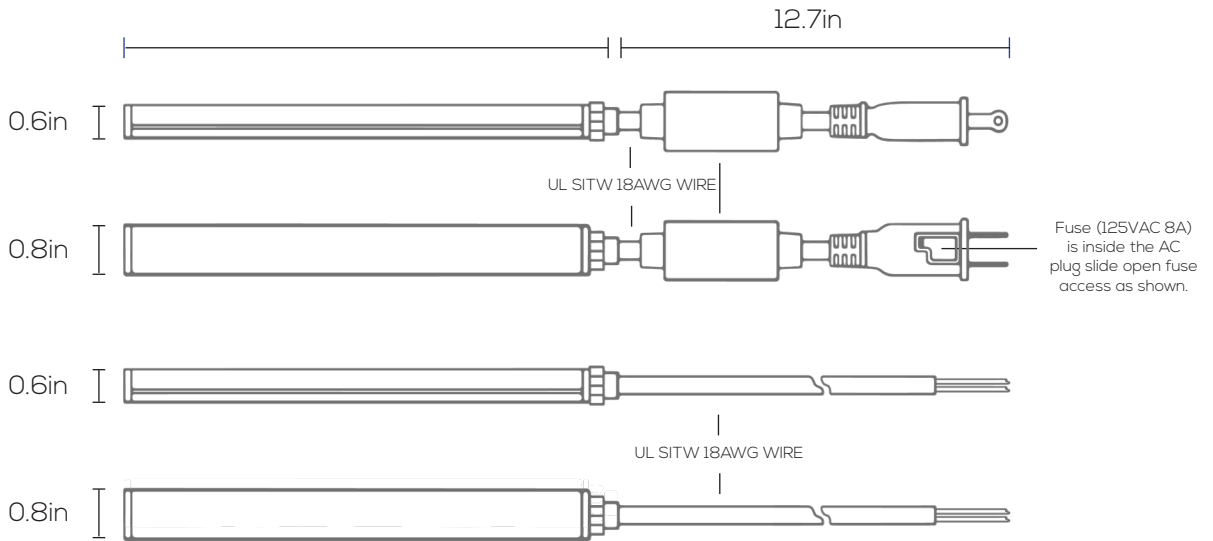
Project: _____ Type: _____

Name: _____ Date: _____

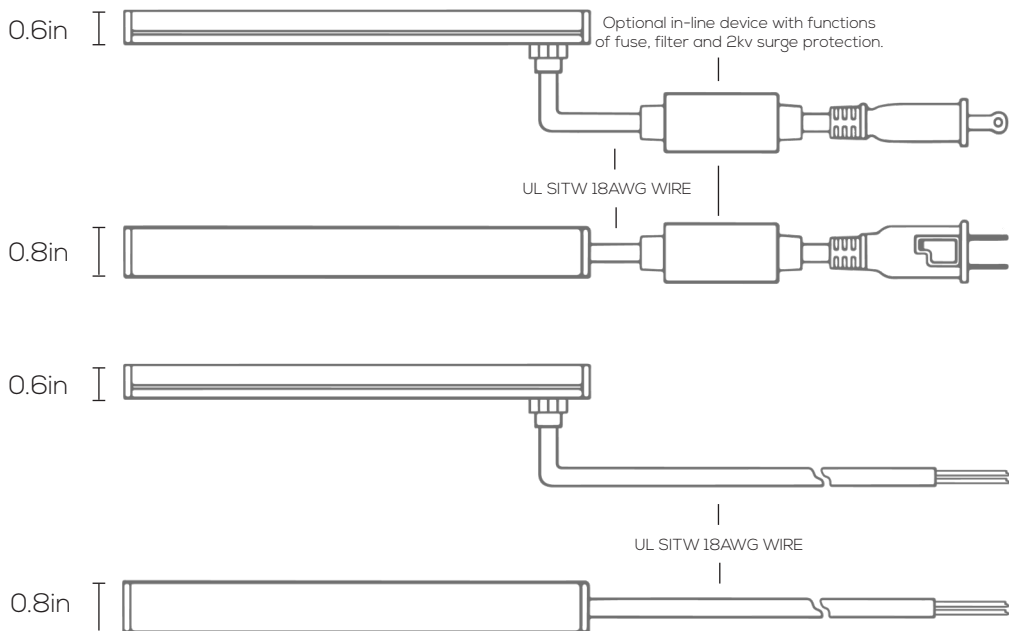
DIMENSIONS: SES-UNF-900TB (Top Bend)



Power cable fed on tail end



Power cable fed on bottom end



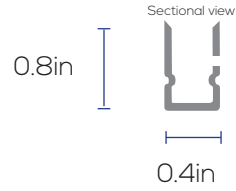


ULTRA NEON FLEX

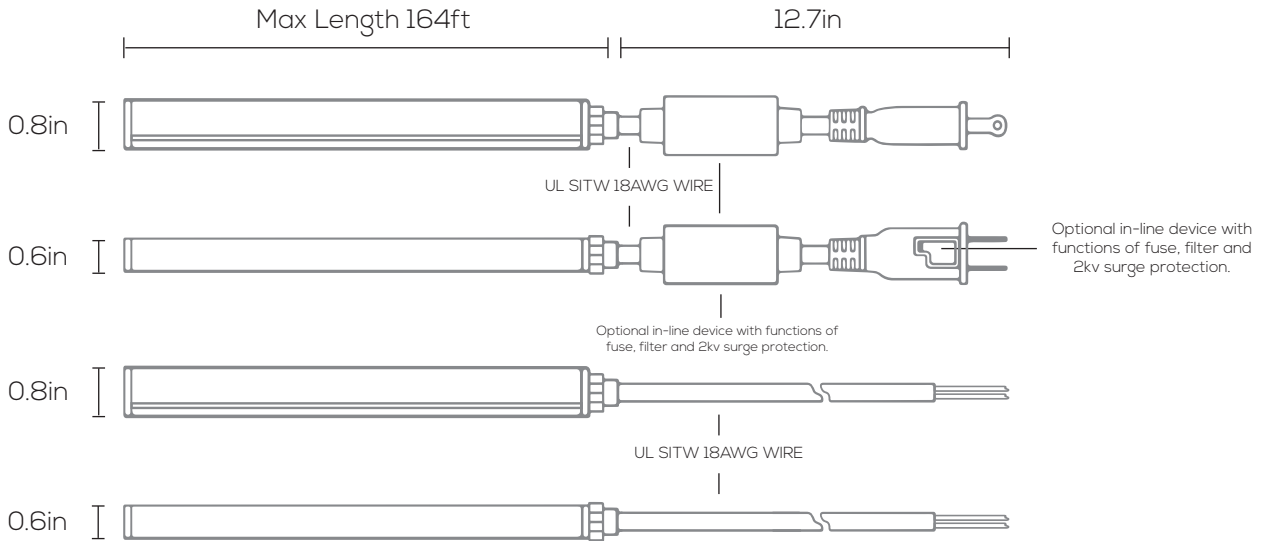
Project: _____ Type: _____

Name: _____ Date: _____

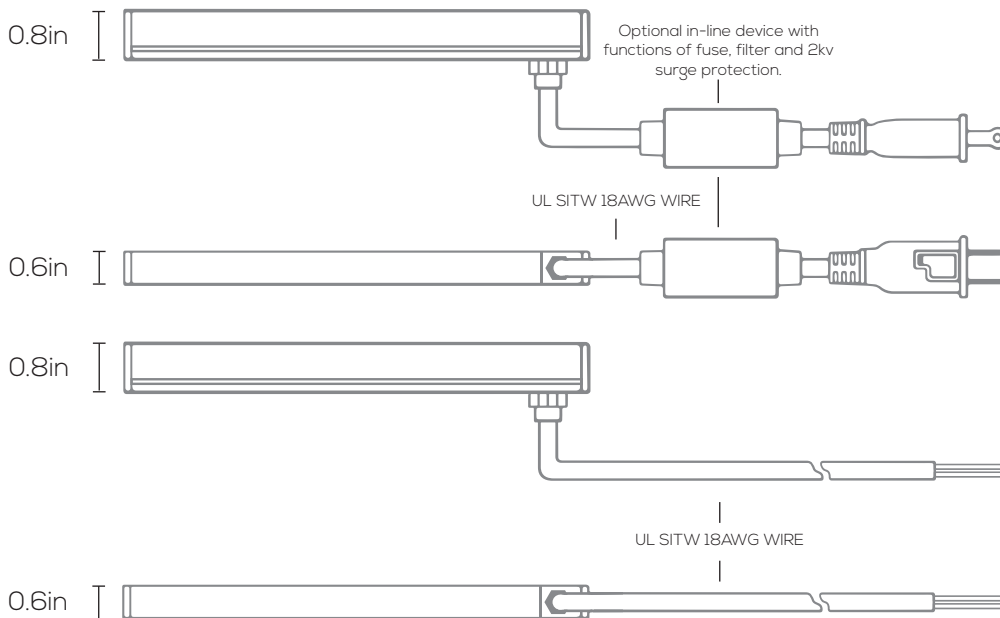
DIMENSIONS: SES-UNF-901SB (Side Bend)



Power cable fed on tail end



Power cable fed on bottom end





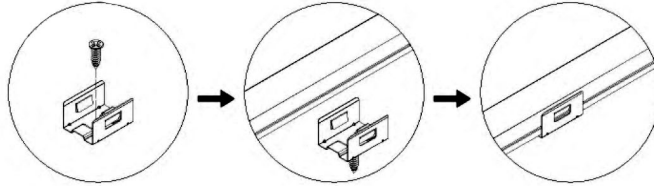
ULTRA NEON FLEX

Project: _____ Type: _____

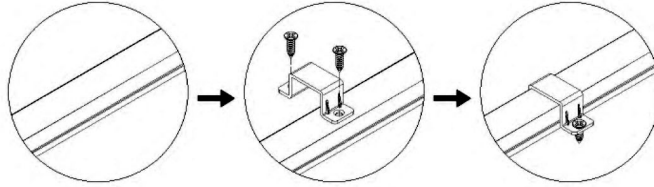
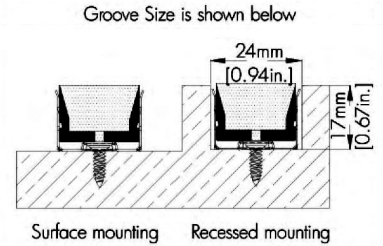
Name: _____ Date: _____

INSTALLATION: SES-UNF-900XD

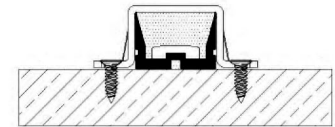
- Open fuse cover, slide open fuse access cover on top of attachment plug towards blades.
- Remove Fuse carefully, push the fuse from the other side, take it out and replace for a new one with 8 Amps/ 125V only.
- Close fuse cover, slide back in the access fuse cover on top of attachment plug towards cable.



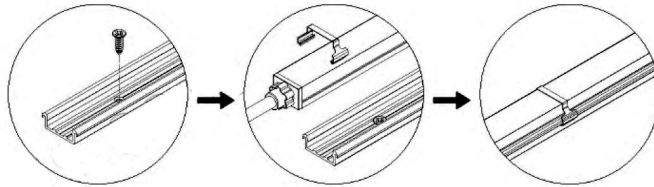
Option 1: Fixed by bracket + screw



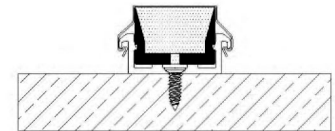
Option 2: Fixed by clip + screw



Surface mounting



Option 3: Fixed by aluminum channel + clip (outdoor exclusive)



Surface mounting

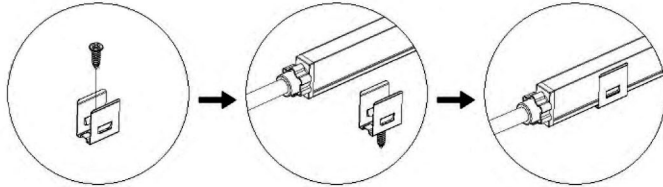


ULTRA NEON FLEX

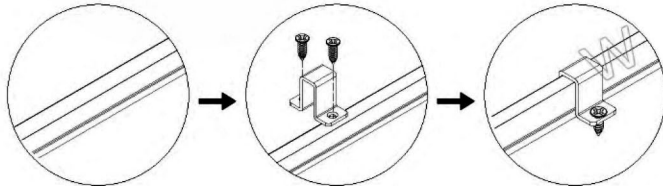
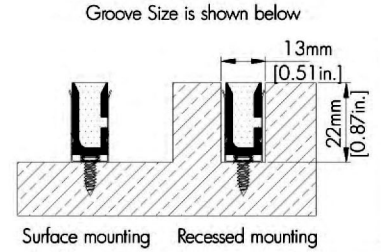
Project: _____ Type: _____

Name: _____ Date: _____

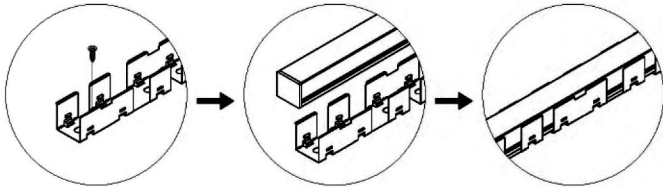
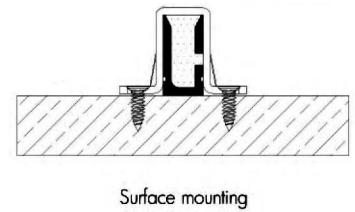
INSTALLATION: SES-UNF-901XD



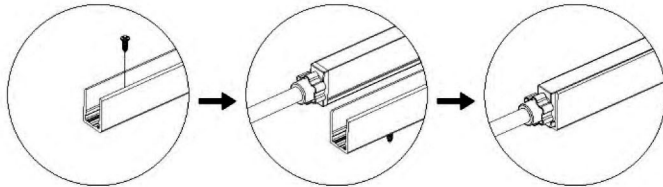
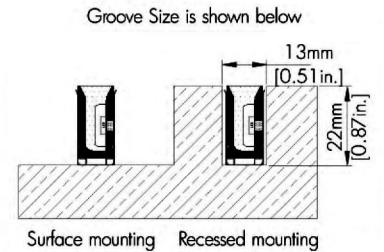
Option 1: Fixed by bracket + screw



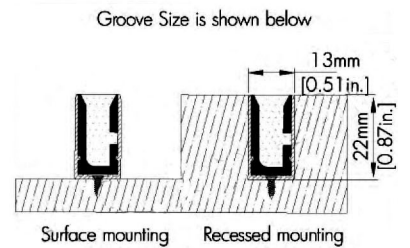
Option 2: Fixed by clip + screw



Option 3: Fixed by bendable bracket.



Option 4: Fixed by aluminum channel + screw



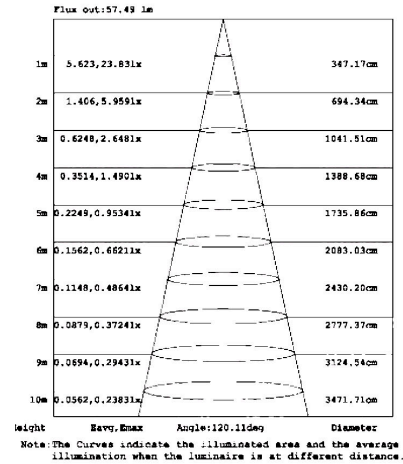
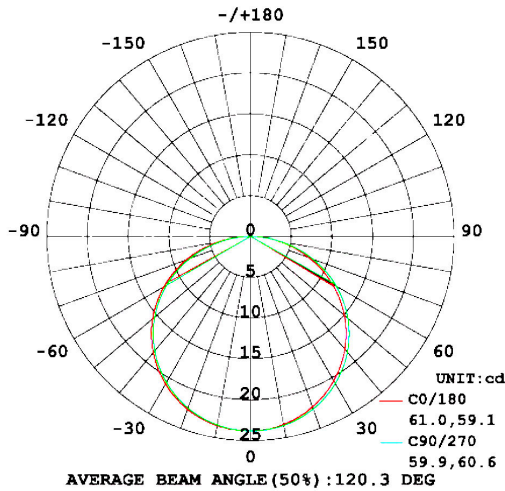


ULTRA NEON FLEX

Project: _____ Type: _____

Name: _____ Date: _____

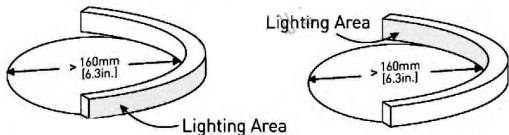
PHOTOMETRICS:



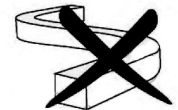
NOTICE:

1. Do not install the luminaire when connected to power source. Make sure the wiring is correctly plugged in before use.
2. IP65 version is rated for indoor and outdoor applications.
3. Do not install it where there is excessive heat (ex. close proximity to fireplace, etc.)
4. Avoid scrape, twist and/or irregular-bend during installation, it might cause a non repairable issue.
5. To protect your eyes, do not store the luminary for a long time while it's illuminated
6. Minimum bending diameter is 6.3in for Top Bend 900TB and 4.72in for Side Bend 901SB, (Too small bending diameter will break the luminary).
7. Minimum twist angle, is 360° per 39.4in.
8. Luminary linked in over long length will lead to overload problems.
9. Only certified electricians can install, dismantle and repair.
10. Bend and twist diagram is shown as below.

UNF-900TB

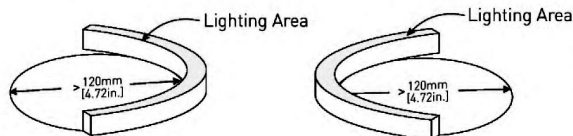


▲ Max. twist angle is 360° per meter.



Can't be side-bend

UNF-901SB



▲ Max. twist angle is 360° per meter.



Can't be top-bend



ULTRA NEON FLEX

Project: _____ Type: _____

Name: _____ Date: _____

ORDER FORM:

(*) Special Order/Not Commonly Stocked

Custom Model Assembly

	Fixture	CCT	Watts	Beam Angle	Voltage
<u>SES-UNF-900XD</u> Example Model Number	<input checked="" type="checkbox"/> UNF	<input type="checkbox"/> White	<input type="checkbox"/> 4.2W/ft.	<input checked="" type="checkbox"/> 120°	<input checked="" type="checkbox"/> AC110-120V
		<input type="checkbox"/> Red	<input type="checkbox"/> 3W/ft.		
		<input type="checkbox"/> Green*			
		<input type="checkbox"/> Blue			
		<input type="checkbox"/> Amber			
		<input type="checkbox"/> Pink*			

Quantity	SES	-	UNF	-		-		-	110-120
	Fixture		CCT		Watts		Beam Angle		Voltage

Common Stock Models:

Item #	Model #
30745	SES-UNF-900XD
30746	SES-UNF-901XD
30747	SES-UNF-900XD-BLUE
30748	SES-UNF-900XD-6000K
30749	SES-UNF-900XD-AMBER
30750	SES-UNF-900XD-RED

Optional Accessories:

Item #	Model #
40745-D	UNF Plug Wire
40745-M	UNF End Cap
40745-N	UNF Clip
40745-O	UNF Channel
40745-P	UNF Bracket