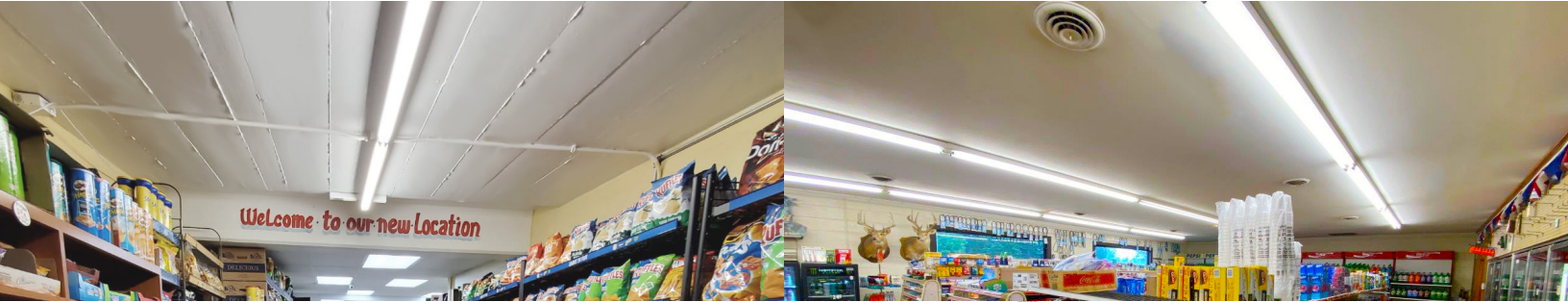




# T8IN | LED Integrated Tube Light

Project: \_\_\_\_\_ Type: \_\_\_\_\_

Name: \_\_\_\_\_ Date: \_\_\_\_\_



## OVERVIEW

- Applications:** Indoor (IP20)
- Efficacy:** 120-130lm/W
- Dimming:** Non-Dimming
- LED Type:** SMD2835
- Driver:** Zenith/ZS Series
- Operating Temp:** -68°F to 104°F
- Operating Humidity:** <20% RH
- Lifespan:** 50,000 hours
- Warranty:** 5 years



<b>Size</b>	2' x 15" x 15" 3' x 15" x 15" 4' x 15" x 15" 8' x 15" x 15"	<b>Lumens</b>	1200-7500lm
<b>Watts</b>	10W, 22W, 60W	<b>CCT</b>	3000K, 4000K, 5000K, 6500K
<b>Voltage</b>	AC100-250V	<b>IP Rating</b>	IP20
<b>Dimming</b>	Non-Dimming	<b>Materials</b>	Aluminum, PC
<b>Beam Angle</b>	120°	<b>Finish</b>	White
<b>CRI</b>	>80	<b>Lens</b>	Frosted, Striped, Clear
<b>PF</b>	>0.9	<b>Lifespan</b>	50,000 hrs

## FEATURES

- 70% electrical savings when replacing fluorescent lights
- Linkable integrated fixture connects up to (8) tubes directly to one another
- High quality 6063-T5 Aluminum maximizes LED life
- Ultra-bright, high-output LEDs

## ACCESSORIES

- (2) Screws
- (2) Anchors
- (2) Clips
- 7" Power Cord
- 9" or 10' Link Cable (Optional)

SARIN LED INTEGRATED TUBE LIGHTS replace low voltage, halogen, and fluorescent light bulbs. They are built to provide an energy savings of up to 70% and easy adaption for retrofitting old lighting systems.

SARIN LED INTEGRATED TUBE LIGHTS are perfect for interior lighting in offices, schools, parking garages, warehouses and any place with high ceilings, delivering efficient and long-lasting illumination, as well as sustainable LED brilliance.

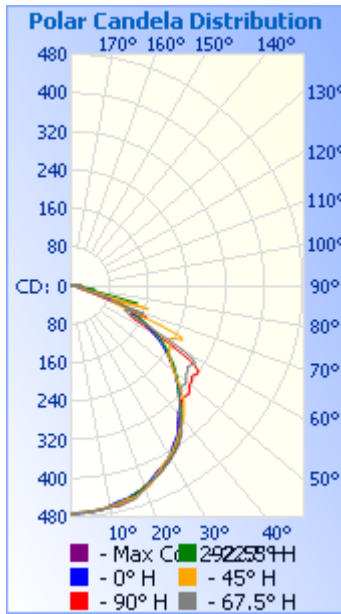
These lights connect directly to the line source, eliminating the need for ballasts altogether. Each unit can be connected to each other, either directly up to 24 feet or with the optional link cable for spacing options. Intended for indoor use.



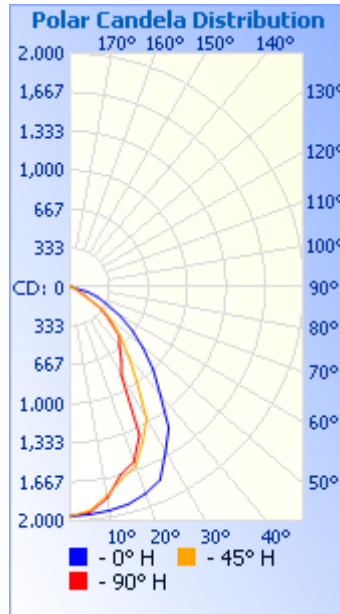


**PHOTOMETRICS:**

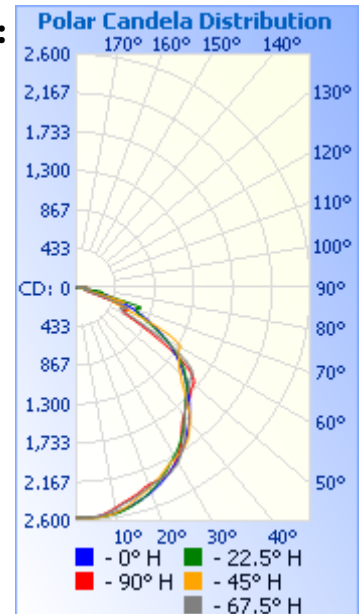
**2ft:**



**4ft:**



**8ft:**



**2ft:**

	Illuminance at a Distance		
	Center Beam fc	Beam Width	
2.5ft	75.5 fc	7.2 ft	8.3 ft
5.0ft	18.9 fc	14.4 ft	16.5 ft
7.5ft	8.39 fc	21.6 ft	24.8 ft
10.0ft	4.72 fc	28.8 ft	33.1 ft
12.5ft	3.02 fc	36.0 ft	41.4 ft
15.0ft	2.10 fc	43.2 ft	49.6 ft

■ Vert. Spread: 110.4°  
■ Horiz. Spread: 117.7°

**4ft:**

	Illuminance at a Distance		
	Center Beam fc	Beam Width	
2.5ft	138 fc	6.2 ft	10.8 ft
5.0ft	34.5 fc	12.3 ft	21.7 ft
7.5ft	15.3 fc	18.5 ft	32.5 ft
10.0ft	8.63 fc	24.7 ft	43.4 ft
12.5ft	5.53 fc	30.9 ft	54.2 ft
15.0ft	3.84 fc	37.0 ft	65.1 ft

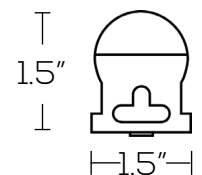
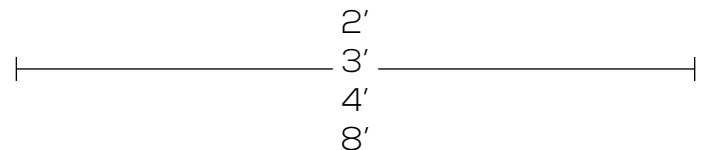
■ Vert. Spread: 102.0°  
■ Horiz. Spread: 130.5°

**8ft:**

	Illuminance at a Distance		
	Center Beam fc	Beam Width	
2.5ft	411 fc	7.8 ft	7.8 ft
5.0ft	103 fc	15.6 ft	15.7 ft
7.5ft	45.7 fc	23.4 ft	23.5 ft
10.0ft	25.7 fc	31.2 ft	31.4 ft
12.5ft	16.5 fc	38.9 ft	39.2 ft
15.0ft	11.4 fc	46.7 ft	47.1 ft

■ Vert. Spread: 114.6°  
■ Horiz. Spread: 115.0°

**DIMENSIONS:**





# T8IN | LED Integrated Tube Light

Project: \_\_\_\_\_ Type: \_\_\_\_\_

Name: \_\_\_\_\_ Date: \_\_\_\_\_

## ORDER FORM:

(\*) Special Order/Not Commonly Stocked

Custom Model Assembly

SES-T8IN4FT-4000-22-FR  
Example Model Number

Fixture	CCT	Watts	Lens
<input type="checkbox"/> T8IN2FT	<input type="checkbox"/> 3000K	<input type="checkbox"/> 10W	<input type="checkbox"/> Frosted
<input type="checkbox"/> T8IN3FT*	<input type="checkbox"/> 4000K	<input type="checkbox"/> 22W	<input type="checkbox"/> Striped
<input type="checkbox"/> T8IN4FT	<input type="checkbox"/> 5000K	<input type="checkbox"/> 60W	<input type="checkbox"/> Clear
<input type="checkbox"/> T8IN8FT	<input type="checkbox"/> 6500K		

Quantity	SES	Fixture	CCT	Watts	Lens
_____	—	—	—	—	—

### Common Stock Models:

Item #	Model #
10146	SES-T8IN2FT-5000-10-ST
10159	SES-T8IN2FT-6500-10-CL
10145	SES-T8IN4FT-3000-22-FR
10149	SES-T8IN4FT-4000-22-FR
10157	SES-T8IN4FT-5000-22-FR
10153	SES-T8IN8FT-4000-60-FR
10150	SES-T8IN8FT-5000-60-CL

### Accessories:

Item #  
40145-D



7" Power Cord

Item #  
40145-C



9" Link Cable (Optional)

Item #  
40145-K



Integrated T8 Tubes 10' Cable (Optional)



(2) Clips (2) Anchors (2) Screws