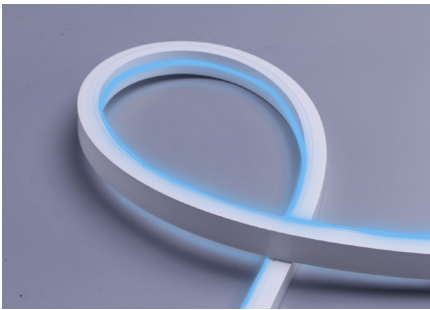




ULTRA NEON FLEX

Project: _____ Type: _____

Name: _____ Date: _____



| | White | Red | Green | Blue | Amber | Pink |
|------------------|-----------|----------|-----------|----------|-----------|----------|
| Top Bend | 255lm/ft. | 28lm/ft. | 175lm/ft. | 20lm/ft. | 118lm/ft. | 98lm/ft. |
| Side Bend | 120lm/ft. | 14lm/ft. | 83lm/ft. | 10lm/ft. | 57lm/ft. | 47lm/ft. |

| | |
|-------------------|---|
| Size | Top Bend: 164' x 0.8" x 0.6" Side Bend: 164' x 0.4" x 0.8" |
| Watts | White: 4.2W/ft. Red/Green/Blue/Amber/Pink: 3W/ft. |
| Voltage | AC110-120V |
| Dimming | TRIAC |
| Beam Angle | 120° |
| CRI | White: Ra>80 |
| PF | >0.9 |

| | |
|-----------------------|---|
| CCT | White/Red/Green/Blue/ Amber/Pink |
| IP Rating | IP65 |
| Materials | Silicone, Copper |
| LED Qty | Top Bend (TB): 42LED/ft. Side Bend (SB): 40LED/ft. |
| Cutting Length | 900TB: 2in 901SB: 1ft |
| Lifespan | 50,000 Hours |

SARIN's Ultra Neon Flex (UNF) is a cutting-edge LED solution designed for both functionality and safety. Its patented driverless design features an on-board constant current driver, allowing for a direct AC power supply without the need for an external driver. The UNF is TRIAC dimmable, offering seamless compatibility with standard dimming systems to create the perfect ambiance. Built to withstand the elements, the UNF boasts an IP65 rating for superior resistance to dust and water, making it ideal for indoor and outdoor use.

OVERVIEW

Applications: Indoor/Outdoor IP65

Efficacy: 70-90lm/W

Dimming: TRIAC

LED Type: SMD2835

Operating Temp: -4° to 113° F

Lifespan: 50,000 hours

Warranty: 5 years (Indoors)
3 years (Outdoors)

FEATURES

- Uniform, dot-free and smooth neon light up to 164ft (50m) of run length.
- Driverless design with on-board constant current IC driver and rectifier.
- Direct AC power supply with external driver.
- Thick silicone jacket insures electrical safety by ETL and RoHS standards.
- Environmentally-friendly silicone, bend flexibility, impact resistant and inclement weather resistant
- Advanced silicone extrusion technology



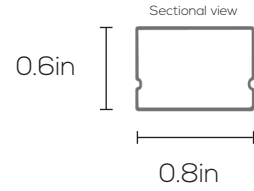


ULTRA NEON FLEX

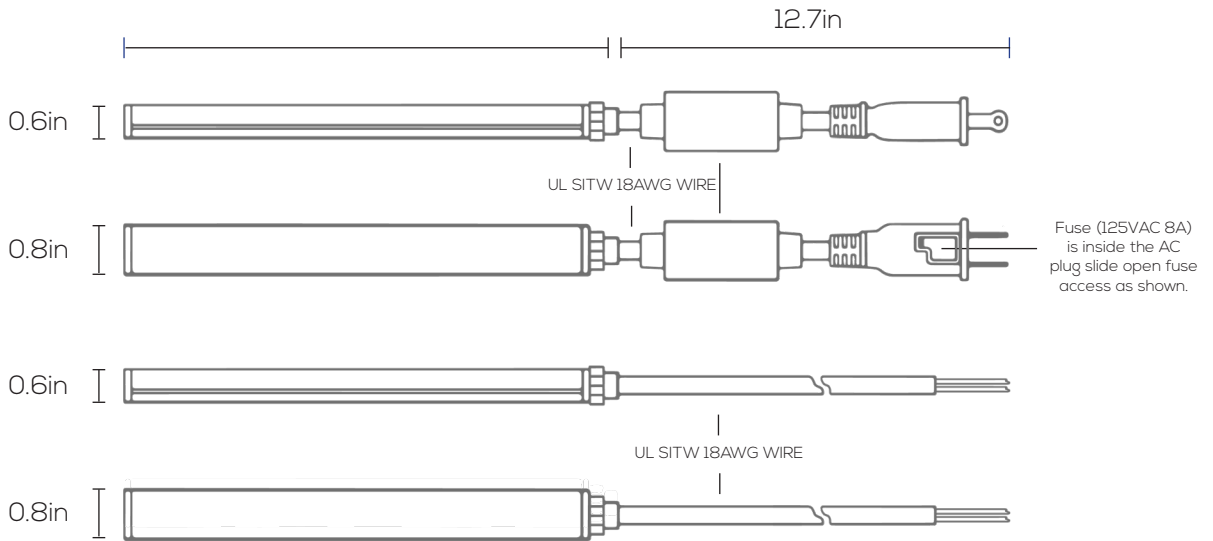
Project: _____ Type: _____

Name: _____ Date: _____

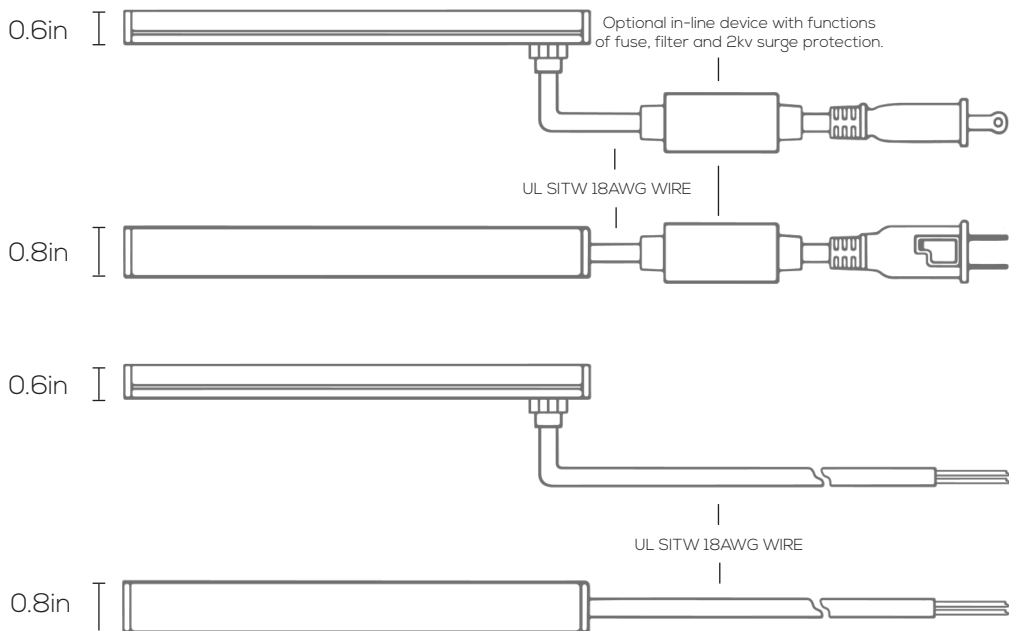
DIMENSIONS: SES-UNF-900TB (Top Bend)



Power cable fed on tail end



Power cable fed on bottom end



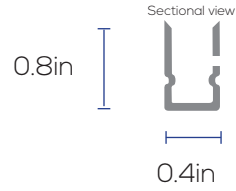


ULTRA NEON FLEX

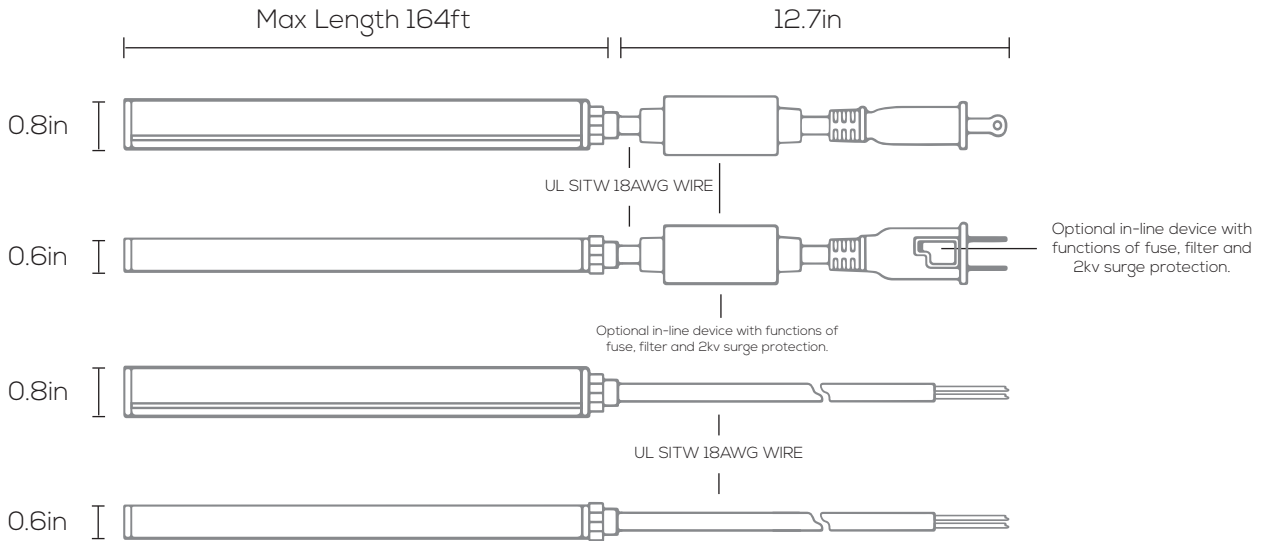
Project: _____ Type: _____

Name: _____ Date: _____

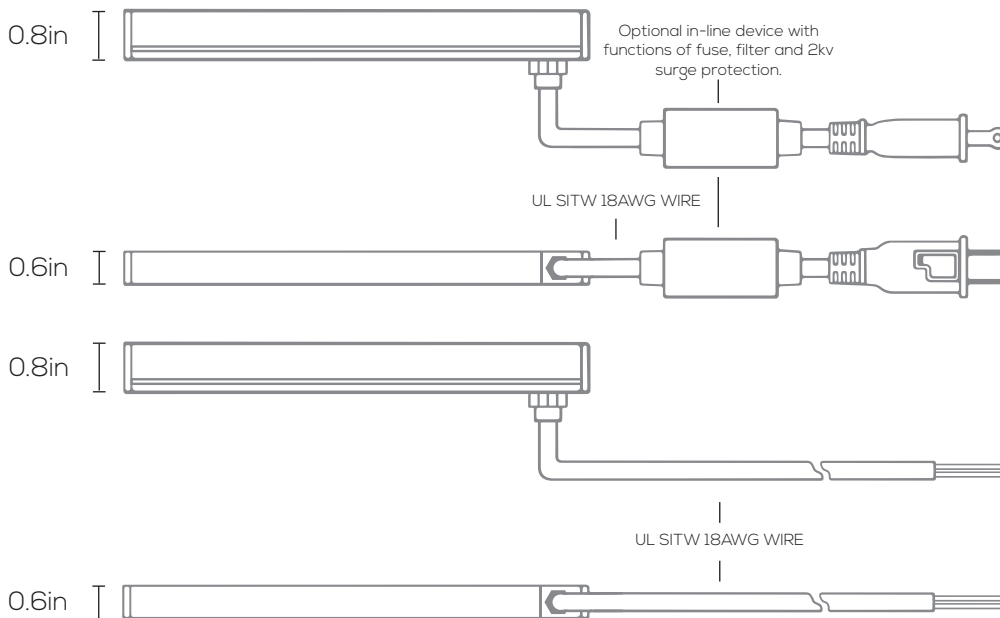
DIMENSIONS: SES-UNF-901SB (Side Bend)



Power cable fed on tail end



Power cable fed on bottom end





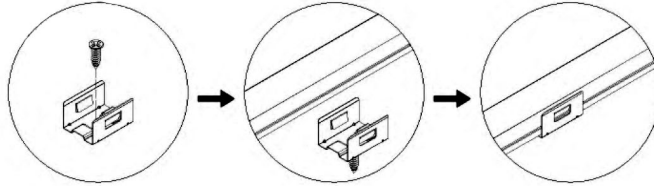
ULTRA NEON FLEX

Project: _____ Type: _____

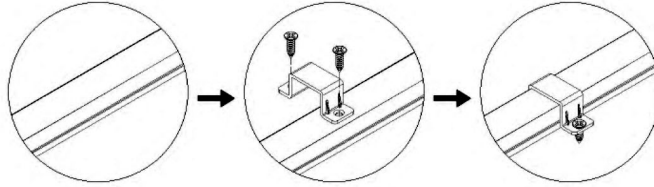
Name: _____ Date: _____

INSTALLATION: SES-UNF-900XD

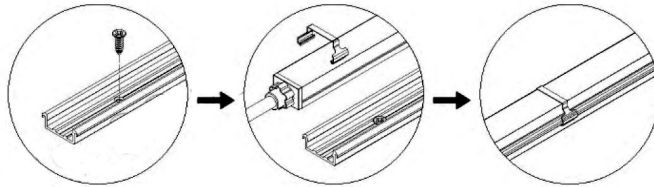
- Open fuse cover, slide open fuse access cover on top of attachment plug towards blades.
- Remove Fuse carefully, push the fuse from the other side, take it out and replace for a new one with 8 Amps/ 125V only.
- Close fuse cover, slide back in the access fuse cover on top of attachment plug towards cable.



Option 1: Fixed by bracket + screw

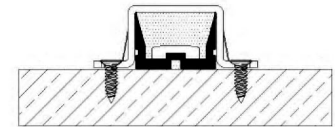
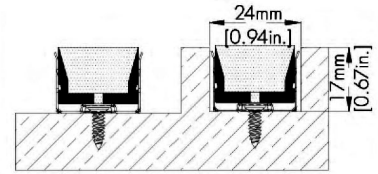


Option 2: Fixed by clip + screw

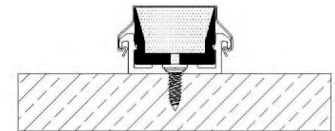


Option 3: Fixed by aluminum channel + clip (outdoor exclusive)

Groove Size is shown below



Surface mounting



Surface mounting

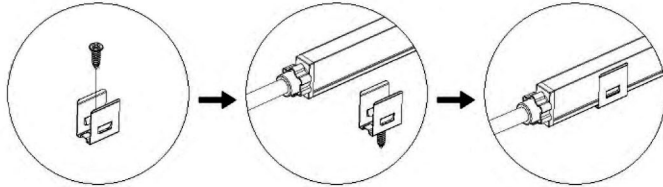


ULTRA NEON FLEX

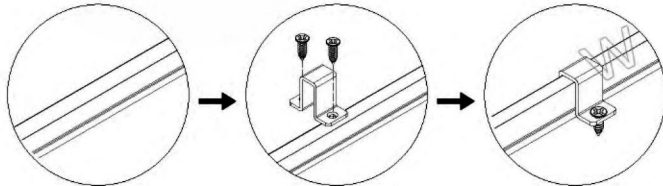
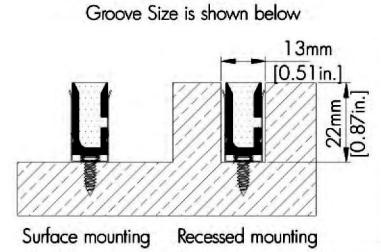
Project: _____ Type: _____

Name: _____ Date: _____

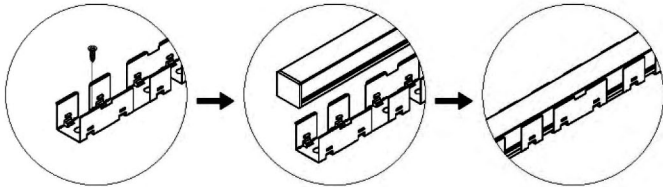
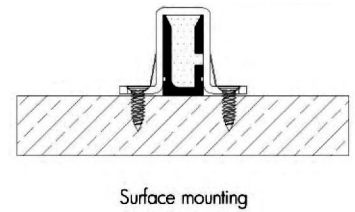
INSTALLATION: SES-UNF-901XD



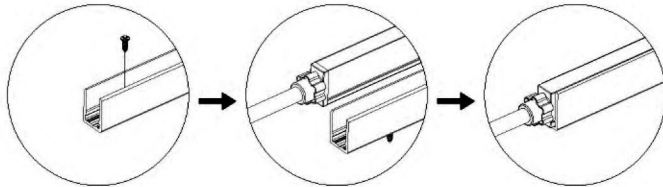
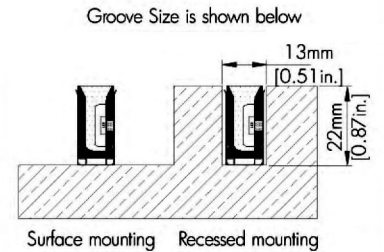
Option 1: Fixed by bracket + screw



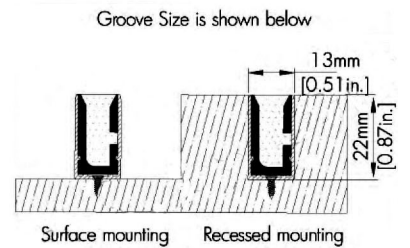
Option 2: Fixed by clip + screw



Option 3: Fixed by bendable bracket.



Option 4: Fixed by aluminum channel + screw



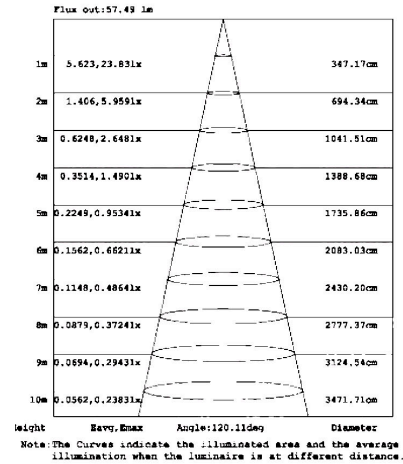
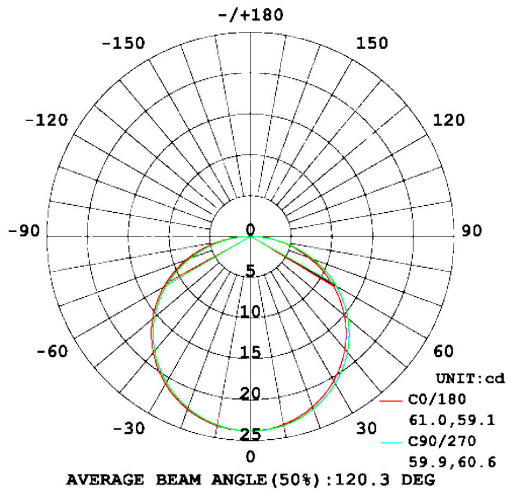


ULTRA NEON FLEX

Project: _____ Type: _____

Name: _____ Date: _____

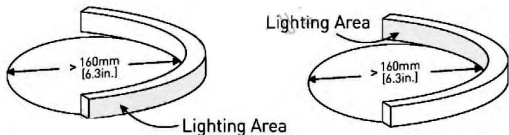
PHOTOMETRICS:



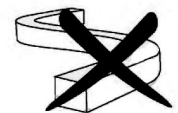
NOTICE:

1. Do not install the luminaire when connected to power source. Make sure the wiring is correctly plugged in before use.
2. IP65 version is rated for indoor and outdoor applications.
3. Do not install it where there is excessive heat (ex. close proximity to fireplace, etc.)
4. Avoid scrape, twist and/or irregular-bend during installation, it might cause a non repairable issue.
5. To protect your eyes, do not store the luminary for a long time while it's illuminated
6. Minimum bending diameter is 6.3in for Top Bend 900TB and 4.72in for Side Bend 901SB, (Too small bending diameter will break the luminary).
7. Minimum twist angle, is 360° per 39.4in.
8. Luminary linked in over long length will lead to overload problems.
9. Only certified electricians can install, dismantle and repair.
10. Bend and twist diagram is shown as below.

UNF-900TB

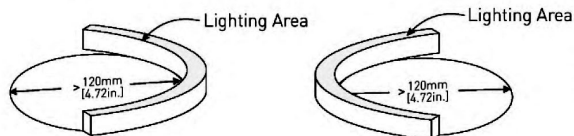


▲ Max. twist angle is 360° per meter.



Can't be side-bend

UNF-901SB



▲ Max. twist angle is 360° per meter.



Can't be top-bend



ULTRA NEON FLEX

Project: _____ Type: _____

Name: _____ Date: _____

ORDER FORM:

(*) Special Order/Not Commonly Stocked

Custom Model Assembly

| | | | | | |
|--|---|---------------------------------|-----------------------------------|--|--|
| | Fixture | CCT | Watts | Beam Angle | Voltage |
| <u>SES-UNF-900XD</u> Example Model Number | <input checked="" type="checkbox"/> UNF | <input type="checkbox"/> White | <input type="checkbox"/> 4.2W/ft. | <input checked="" type="checkbox"/> 120° | <input checked="" type="checkbox"/> AC110-120V |
| | | <input type="checkbox"/> Red | <input type="checkbox"/> 3W/ft. | | |
| | | <input type="checkbox"/> Green* | | | |
| | | <input type="checkbox"/> Blue | | | |
| | | <input type="checkbox"/> Amber | | | |
| | | <input type="checkbox"/> Pink* | | | |
| | | <input type="checkbox"/> 3000K | | | |
| | | <input type="checkbox"/> 6000K | | | |

SES — UNF — — — — 110-120

Quantity Fixture CCT Watts Beam Angle Voltage

Common Stock Models:

| Item # | Model # |
|--------|---------------------|
| 30745 | SES-UNF-900XD |
| 30746 | SES-UNF-901XD |
| 30747 | SES-UNF-900XD-BLUE |
| 30748 | SES-UNF-900XD-6000K |
| 30749 | SES-UNF-900XD-AMBER |
| 30750 | SES-UNF-900XD-RED |
| 30751 | SES-UNF-900XD-3000 |

Optional Accessories:

| Item # | Model # |
|---------|---------------|
| 40745-D | UNF Plug Wire |
| 40745-M | UNF End Cap |
| 40745-N | UNF Clip |
| 40745-O | UNF Channel |
| 40745-P | UNF Bracket |