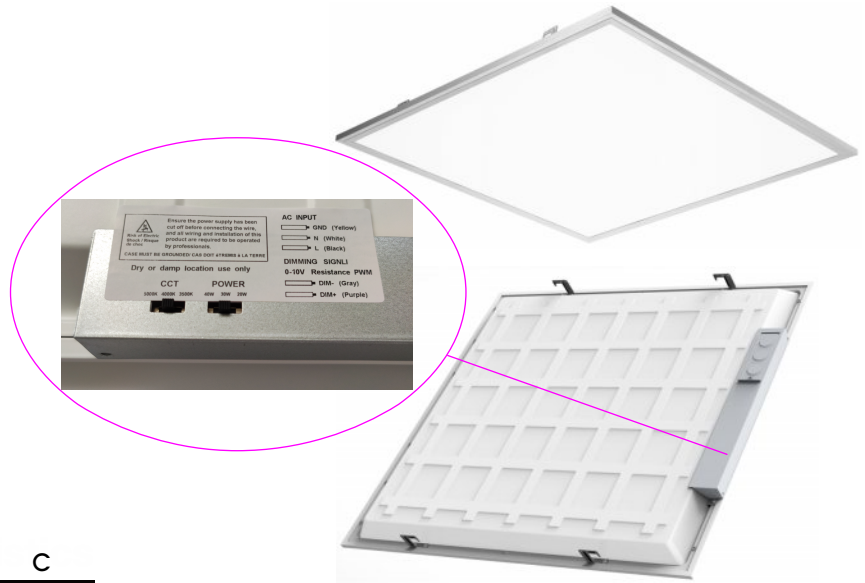
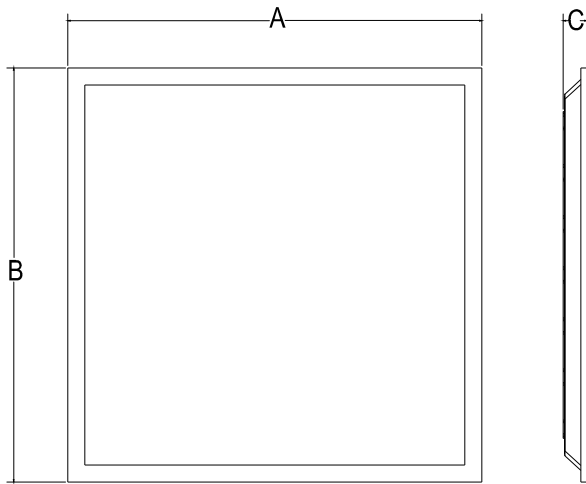


SPECIFICATION

LED Panel Light



Maximum overall	A	B	C
2*2ft	603mm	603mm	35mm
1*4ft	1213mm	303mm	35mm
2*4ft	1213mm	603mm	35mm



FEATURES

Input voltage: AC100-277V

Operating frequency: 50/60Hz

Power factor: > 0.95

Ambient temperature range: -20°C ~+45°C

Color Temp: 3000-5000K

Dimmable: 3-in-1 dimming

THD: ≤10%

IP Rating: IP40

CRI: >Ra80

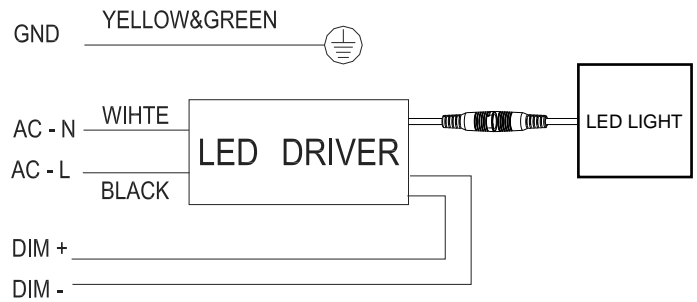
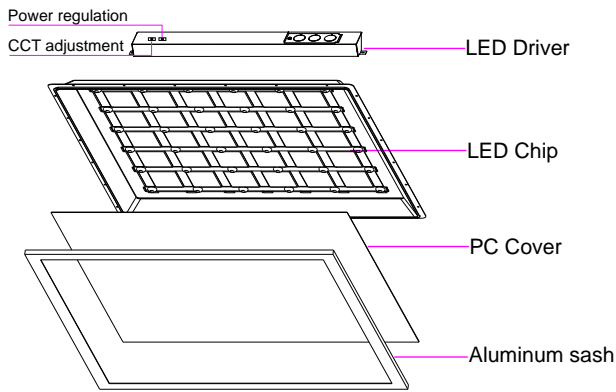
Beam angle: 120°

- Luminous Flux:>125lm/w
- Housing material:6063-T5
- 5 years' warranty
- ETL & DLC Premium

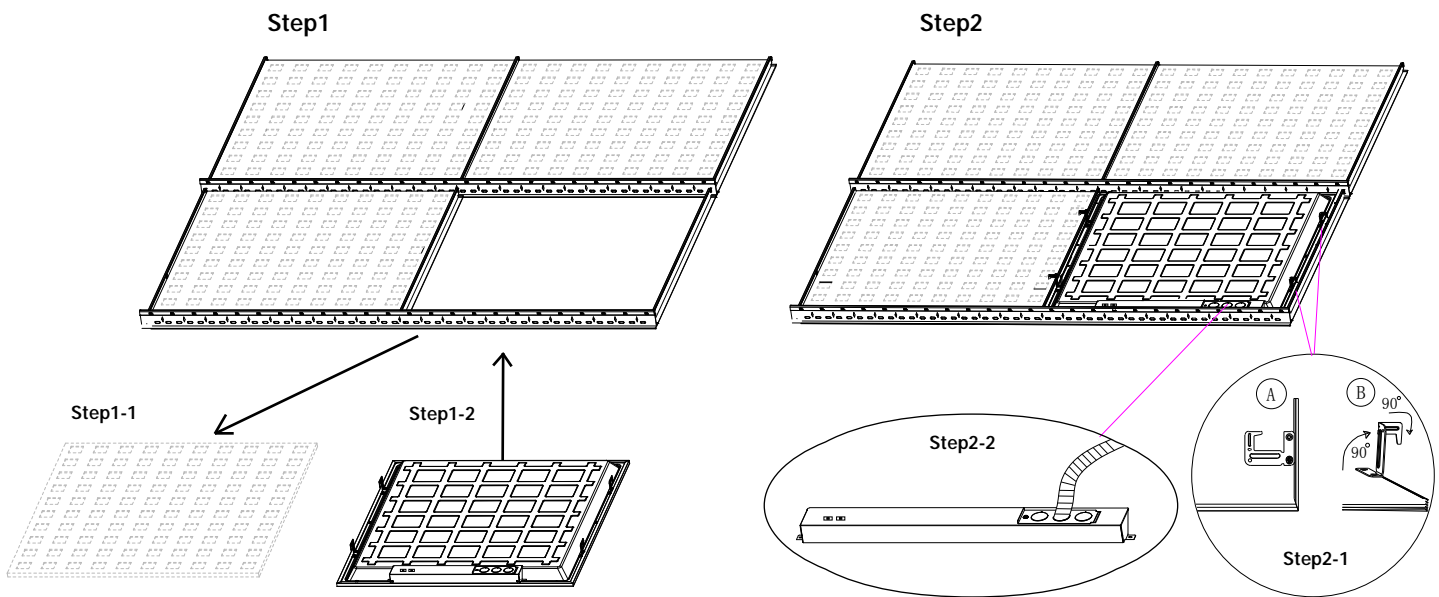
PARAMETER

Length	Product code	Certification	CRI	Wattage	Description	Function	Lumens	Packing/carton	G.W./carton
							3000-5000K		
2*2FT	ZS-BL2*2-S40-CCDD	ETL/cETLus,DLC,	>80	20W/30W/40W	3-in-1 dimming(0-10V;PWM;Rx) CCT Tunable & Power adjustable	2500-5000LM	650*250*650mm 6 pieces 1*40HQ Loading=3840pcs	14kg	
1*4FT	ZS-BL1*4-S40-CCDD	ETL/cETLus,	>80	20W/30W/40W	3-in-1 dimming(0-10V;PWM;Rx) CCT Tunable & Power adjustable	2200-4400LM	1260*250*350mm 6 pieces 1*40HQ Loading=3510pcs	15kg	
2*4FT	ZS-BL2*4-S60-CCDD	ETL/cETLus,DLC,	>80	40W/50W/60W	3-in-1 dimming(0-10V;PWM;Rx) CCT Tunable & Power adjustable	5000-7500LM	1260*250*650mm 6 pieces 1*40HQ Loading=2040pcs	26.5kg	

MOUNTING GUIDES



INSTALLATION INSTRUCTION



Step 1: Make sure of all the power is off before installing. Remove the one ceiling tile that you need to install light fixture on. Then place the light fixture on the T-bar carefully and make sure it is correctly in place and secure.

Step 2: Lift the 4 buckles on the back of the panel up by 90° then bend the top part of the buckles 90° towards the direction where you can anchor the light fixture to the T-bar.

Step 3: Place the driver on top of the lighting fixture in the back. Connect the cable between the driver and the lighting fixture. Open the driver's junction box and connect the AC wire to the driver correctly (L=black & N=white)

Warning:

Make sure all the power is off before installation.

All the installations are required to be done by professionals.