

Solar LED Street Light User Manual



Professional, Powerful, Longlasting



Please read and follow all instructions to operate.
Save this manual for future reference.

Superior Features



Product Image



6400LM
= traditional 400W

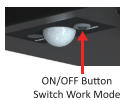
10200LM
= traditional 600W

13800LM
= traditional 800W

Top Specification

Lumen	6400LM	10200 LM	13800 LM
Output Power	40W	60W	80W
≈ Traditional Power	400W	600W	800W
LEDs	SMD2835*100PCS	SMD2835*181PCS	SMD2835*241PCS
LiFePO4 Battery Pack	32700, 76.8Wh	32700, 115.2Wh	32700, 153.6Wh
Mono Solar Panel	22W/18V	28W/17.5V	42W/17.5V
Lamp Dimension	507*287*229mm	612*331*229mm	853*349*243.5mm
Beam Angle	140°*70°	140°*70°	140°*70°
Installation Height	4-6M	4-6M	4-6M
Installation Spacing	10-15M	10-15M	15-20M
Lighting Area	232㎡	404㎡	582㎡
Adjustable Angle	0°-90°		
Charging Time	7 hours strong sunshine for fully charged		
Lighting Time	Keep Lighting Mode: 35 hours Sensor Mode: 60 hours		
PIR Sensor Range	Detection angle: 120°; Detection distance: 8Mtrs		
IP Class	IP65		
Housing Material	Aluminum, fireproof, anti-UV, anti-oxidation		
Working Temp	-20°C - 60°C		
Storage Temp	0°C - 45°C		
Packing	1*Lamp, 1*Remote Control, 1*User Manual		
Warranty	3 years		

Two Optional Working Modes



ON/OFF Button
Switch Work Mode

Please press the button on the lamp to turn on the lamp and select working mode.
Press 1st time, lamp turns on and enters Keep Lighting Mode;
Press 2nd time, lamp enters Auto Sensor Mode;
Press 3rd time, lamp turns off.

Keep Lighting Mode

Lamp automatically lights up at night and keep **60% brightness** for **5 hours**, after which lamp turns to Auto Sensor Mode.



Auto Sensor Mode

Lamp automatically lights up at night and turns to full brightness when motion is detected in the range $\leq 8\text{Mtrs}$, then dims to lower brightness in 20 seconds of no motion.



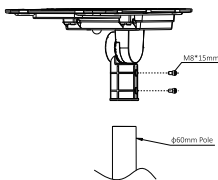
Operations of DIY Work Mode by Remote Control

After lamp is turned on, you can also use remote control to adjust demanded working mode.

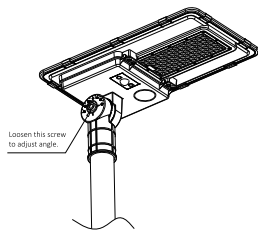
Remote Control Button	Function
ON/OFF	Useless buttons
ON	* Press ON, lamp turns on. * ON/OFF switches on the remote control are with memory function.
OFF	Press OFF, lamp flicks 3 times then turns off.
AUTO	* Press Auto, the lamp enters Auto Sensor Mode directly. * Lamp brightness and lighting time are not selectable under Auto Sensor Mode.
3H/5H/8H	Keep Lighting Time
60%	* These 7 keys (in gray background) are only used to adjust lighting time and brightness of Keep Lighting Mode. * Please press the 3H/5H/8H firstly, the lamp will enter Keep Lighting Mode automatically, then press 60% to set desired brightness.
30%	
+	+15% brightness by each press (Max 60% brightness)
-	-15% brightness by each press (Min 15% brightness)

For example:
Press ON + 60% + -, lamp works as below:
Lamp lights up at night and keeps **45%** brightness for **5Hrs**, after which lamp turns to Auto Sensor Mode.

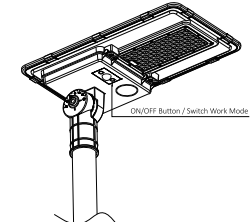
Easy Installation



- 1 Insert the lamp into a lamp pole with a diameter of 60mm, and then fix it with M8*15mm screws.



- 2 Loosen the screw as shown in the picture, adjust the angle of the lamp, and then fix the screw.



- 3 Press the ON/OFF button on the lamp to turn on the lamp and set the working mode by the remote control.

Operation of Indicator Light

This lamp has a red indicator light, which shows the charging state of the lamp.

Working Status of Solar Lamp	Indicator Light Status During the Day	Indicator Light Status At Night
Battery power is more than 80%.	Stay on	Off
The battery charges and discharges normally.	Flash every 3 seconds	Off
Battery power is less than 30%.	Flash every 3 seconds	Flash 3 times, then turn off for 3 seconds. Keep looping.

Wide Applications

Widely used for street, driveway, parking lot, garden, square, road, school, park, pathway, farm, yard, walkway, industrial area, office buildings, hospital, village, castle, etc.

Cautions

1. This is a solar powered lamp, please install the lamp in a location where can get enough sunshine.
2. Please note the lighting time depends on sunshine duration & working mode.
3. The On/Off button on the lamp is power-off switch, helpful to save power consumption. Also the lamp can still get solar charge at day time when the lamp is turned off.
4. Built-in intelligent IC is with over-charge and over-discharge protection, safe & durable.
5. If you will not use the lamp for a long time in the future, please press the button on the lamp to turn off the lamp instead of pressing OFF button on the remote.
6. The lamp is equipped with an internal battery pack, which is replaceable. If any need, please contact seller for correct new battery pack.
7. Non-professionals please do not disassemble the lamp.
8. Please do not dispose the battery with household garbage to avoid explosion.