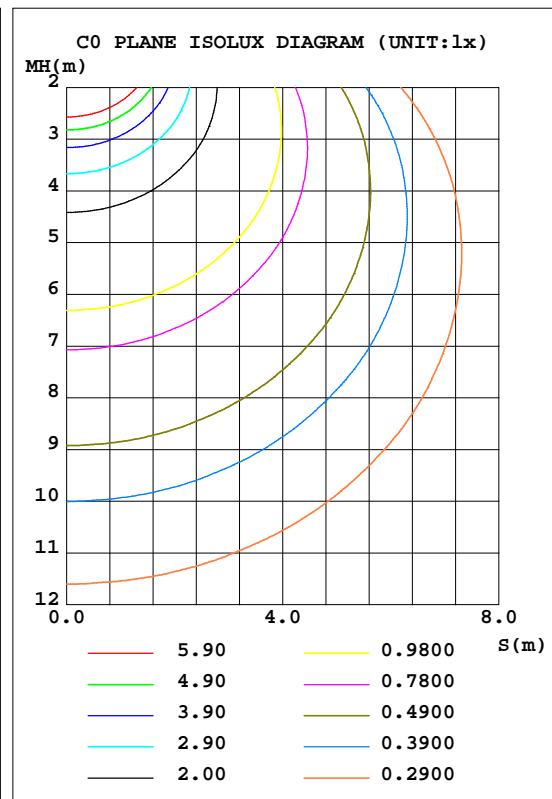
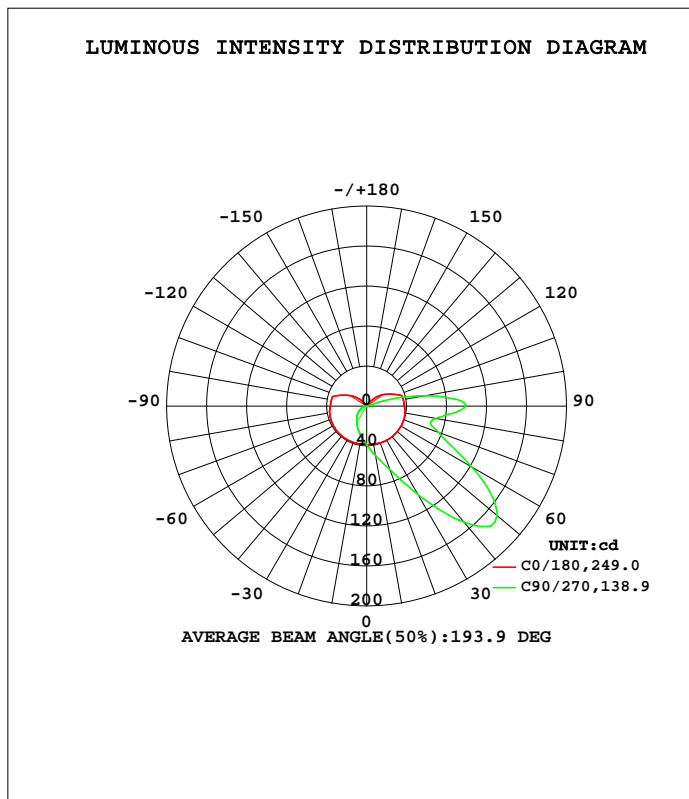


LUMINAIRE PHOTOMETRIC TEST REPORT

Test:U:119.96V I:0.1201A P:14.121W PF:0.9798 Freq:50.00Hz Lamp Flux:509.418x1 lm		
NAME: SES-WL217	TYPE:	WEIGHT:
SPEC.:	DIM.:	SERIAL No.:
MFR.:	SUR.:	Shielding Angle:

DATA OF LAMP		PHOTOMETRIC DATA Eff: 36.07 lm/W			
MODEL	--	I <sub>max</sub> (cd)	197.7	S/MH(C0/180)	1.55
NOMINAL POWER(W)	--	LOR(%)	100.0	S/MH(C90/270)	0.80
RATED VOLTAGE(V)	--	TOTAL FLUX(lm)	509.42	η UP, DN(C0-180)	23.3,59.2
NOMINAL FLUX(lm)	509.418	CIE CLASS	SEMI-D.	η UP, DN(C180-360)	4.6,12.9
LAMPS INSIDE	1	η up(%)	28.0	CIBSE SHR NOM	0.00
TEST VOLTAGE(V)	--	η down(%)	72.0	CIBSE SHR MAX	1.30



C Range: 0 - 360DEG  
 C Interval: 22.5DEG  
 Test Speed: HIGH  
 Temperature:25.3DEG  
 Operators:DAMIN  
 Test Date:2022-09-09

γ Range: 0 - 180DEG  
 γ Interval: 1.0DEG  
 Test System:EVERFINE GO-3000H\_V1 SYSTEM V2.00.411  
 Humidity:65.0%  
 Test Distance:9.000m [K=1.0000]  
 Remarks:

ZONAL FLUX DIAGRAM

ZONAL FLUX DIAGRAM:

$\gamma$	C0	C45	C90	C135	C180	C225	C270	C315	$\gamma$	$\Phi$ zone	$\Phi$ total	%lum,lamp
10	38.91	46.69	50.02	45.79	38.71	33.45	31.44	33.52	0- 10	3.745	3.745	0.74,0.74
20	39.28	56.73	67.43	55.04	38.76	28.88	25.26	29.09	10- 20	11.61	15.35	3.01,3.01
30	39.61	72.53	101.4	66.93	38.97	24.99	19.96	25.27	20- 30	20.91	36.26	7.12,7.12
40	40.00	97.10	151.4	83.44	39.04	21.81	15.56	22.12	30- 40	33.58	69.84	13.7,13.7
50	40.03	127.3	170.0	104.7	39.04	19.19	11.80	19.69	40- 50	49.20	119.0	23.4,23.4
60	39.91	154.8	121.0	128.6	38.81	17.18	8.045	17.67	50- 60	60.31	179.4	35.2,35.2
70	39.59	177.3	76.44	146.2	38.40	15.61	4.170	16.18	60- 70	62.65	242.0	47.5,47.5
80	38.97	193.0	70.91	153.0	37.71	14.48	1.446	15.08	70- 80	62.10	304.1	59.7,59.7
90	37.76	194.8	99.19	150.8	36.46	13.30	0.3514	14.03	80- 90	62.78	366.9	72.72
100	37.27	190.9	59.85	144.3	35.98	9.646	0.5038	11.39	90-100	59.25	426.1	83.7,83.7
110	33.50	143.3	5.138	101.3	31.15	5.356	0.5818	7.055	100-110	45.16	471.3	92.5,92.5
120	24.29	59.07	0.0661	32.84	21.93	4.200	0.5826	5.118	110-120	24.18	495.5	97.3,97.3
130	16.08	13.90	0.0668	4.701	13.56	2.577	0.5345	4.225	120-130	9.880	505.3	99.2,99.2
140	7.501	0.6211	0.0788	0.3193	4.898	0.5232	0.4773	0.4759	130-140	3.357	508.7	99.9,99.9
150	0.3775	0.2051	0.0938	0.0959	0.3619	0.4191	0.4075	0.2938	140-150	0.5253	509.2	100,100
160	0.2586	0.1526	0.1126	0.1112	0.2724	0.3588	0.3287	0.2201	150-160	0.1127	509.3	100,100
170	0.2591	0.1809	0.1441	0.1310	0.2702	0.2933	0.2551	0.1858	160-170	0.0601	509.4	100,100
180	0.2680	0.2308	0.1892	0.1569	0.2680	0.2308	0.1914	0.1561	170-180	0.0195	509.4	100,100
DEG	LUMINOUS INTENSITY:cd								UNIT:lm			

Conical surface Flux(90deg): 92.534 lm

%lum = 18.2%  
%lamp = 18.2%

Conical surface Flux(120deg): 179.35 lm

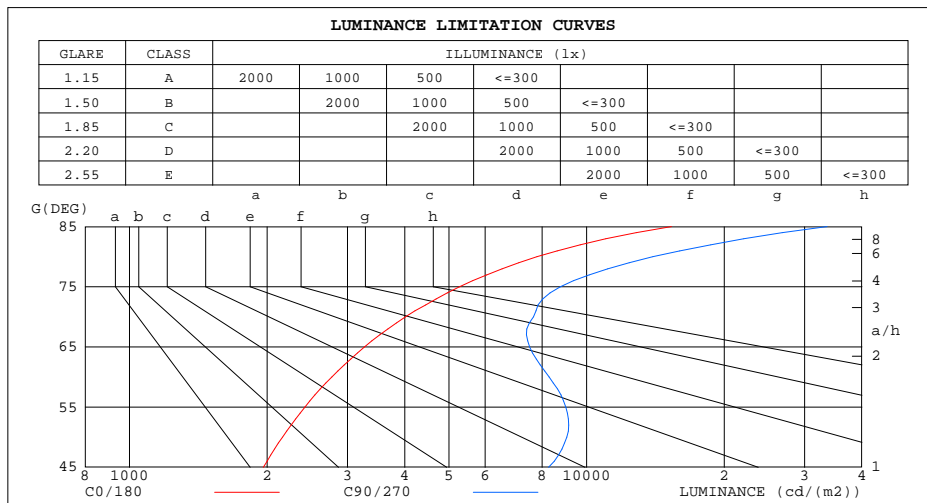
%lum = 35.2%  
%lamp = 35.2%

C Range: 0 - 360DEG  
C Interval: 22.5DEG  
Test Speed: HIGH  
Temperature:25.3DEG  
Operators:DAMIN  
Test Date:2022-09-09

$\gamma$  Range: 0 - 180DEG  
 $\gamma$  Interval: 1.0DEG  
Test System:EVERFINE GO-3000H\_V1 SYSTEM V2.00.411  
Humidity:65.0%  
Test Distance:9.000m [K=1.0000]  
Remarks:

LUMINANCE LIMITATION CURVES

Test:U:119.96V I:0.1201A P:14.121W PF:0.9798 Freq:50.00Hz Lamp Flux:509.418x1 lm		
NAME: SES-WL217	TYPE:	WEIGHT:
SPEC.:	DIM.:	SERIAL No.:
MFR.:	SUR.:	Shielding Angle:



LUMINANCE cd/(m2)		
G(DEG)	C0/180	C90/270
85	15340	33571
80	7790	13978
75	5273	8760
70	4019	7650
65	3265	7511
60	2771	8281
55	2422	9011
50	2162	9054
45	1964	8258

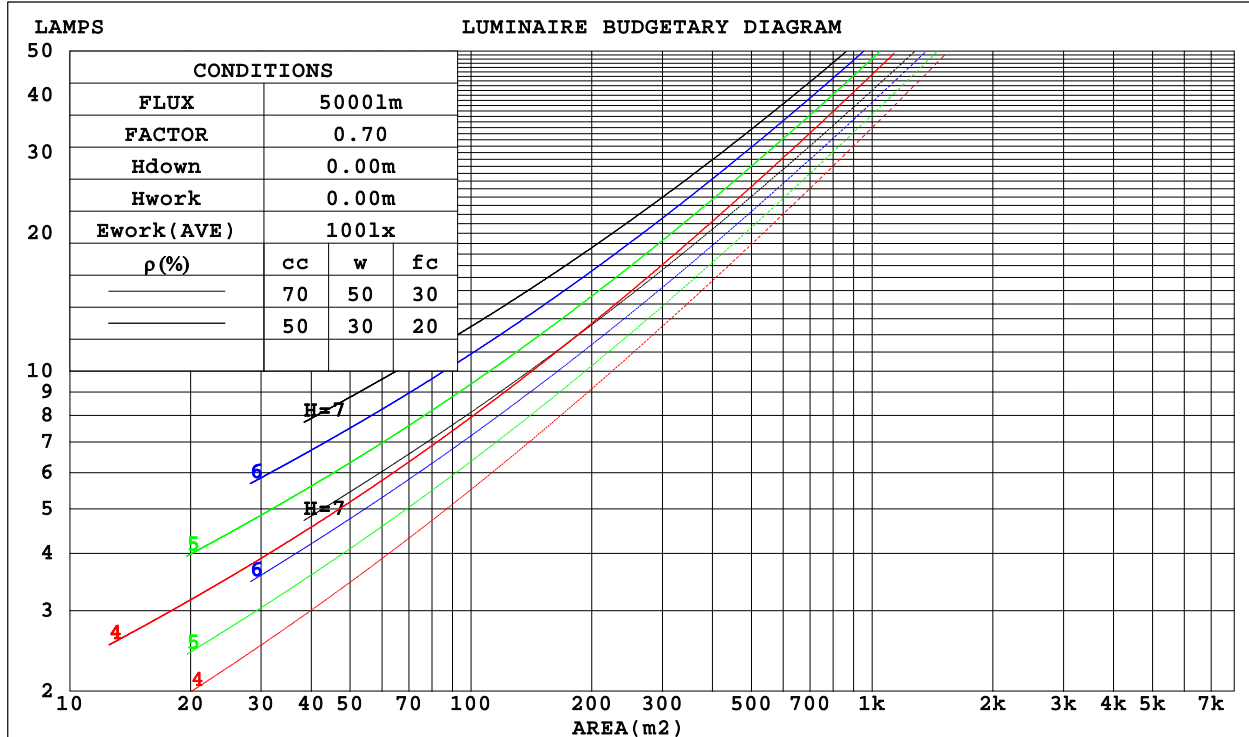
C Range: 0 - 360DEG  
 C Interval: 22.5DEG  
 Test Speed: HIGH  
 Temperature: 25.3DEG  
 Operators: DAMIN  
 Test Date: 2022-09-09

γ Range: 0 - 180DEG  
 γ Interval: 1.0DEG  
 Test System: EVERFINE GO-3000H\_V1 SYSTEM V2.00.411  
 Humidity: 65.0%  
 Test Distance: 9.000m [K=1.0000]  
 Remarks:

CU AND LUMINAIRE BUDGETARY ESTIMATE DIAGRAM

Test:U:119.96V I:0.1201A P:14.121W PF:0.9798 Freq:50.00Hz Lamp Flux:509.418x1 lm		
NAME: SES-WL217	TYPE:	WEIGHT:
SPEC.:	DIM.:	SERIAL No.:
MFR.:	SUR.:	Shielding Angle:

ρcc	80%			70%			50%			30%			10%			0
ρw	50%	30%	10%	50%	30%	10%	50%	30%	10%	50%	30%	10%	50%	30%	10%	0
ρfc	20%			20%			20%			20%			20%			0
RCR	RCR:Room Cavity Ratio						Coefficients of Utilization(CU)									
0.0	1.12	1.12	1.12	1.07	1.07	1.07	.96	.96	.96	.86	.86	.86	.76	.76	.76	.72
1.0	.89	.83	.77	.84	.78	.73	.75	.70	.66	.66	.62	.59	.58	.55	.52	.48
2.0	.75	.66	.58	.70	.62	.55	.62	.55	.50	.54	.49	.44	.47	.43	.39	.35
3.0	.63	.53	.45	.60	.51	.43	.52	.45	.39	.46	.40	.35	.40	.35	.31	.27
4.0	.55	.45	.37	.52	.42	.35	.45	.38	.31	.40	.33	.28	.34	.29	.25	.21
5.0	.48	.38	.30	.45	.36	.29	.40	.32	.26	.35	.28	.23	.30	.25	.20	.17
6.0	.43	.33	.25	.40	.31	.24	.35	.28	.22	.31	.24	.19	.27	.21	.17	.14
7.0	.38	.28	.22	.36	.27	.21	.32	.24	.19	.28	.21	.17	.24	.19	.15	.12
8.0	.34	.25	.19	.32	.24	.18	.29	.21	.16	.25	.19	.14	.22	.17	.13	.10
9.0	.31	.22	.16	.29	.21	.16	.26	.19	.14	.23	.17	.13	.20	.15	.11	.09
10.0	.28	.20	.14	.27	.19	.14	.24	.17	.12	.21	.15	.11	.19	.13	.10	.08



C Range: 0 - 360DEG  
 C Interval: 22.5DEG  
 Test Speed: HIGH  
 Temperature:25.3DEG  
 Operators:DAMIN  
 Test Date:2022-09-09

γ Range: 0 - 180DEG  
 γ Interval: 1.0DEG  
 Test System:EVERFINE GO-3000H\_V1 SYSTEM V2.00.411  
 Humidity:65.0%  
 Test Distance:9.000m [K=1.0000]  
 Remarks:

WEC AND CCEC

Test:U:119.96V I:0.1201A P:14.121W PF:0.9798 Freq:50.00Hz Lamp Flux:509.418x1 lm		
NAME: SES-WL217	TYPE:	WEIGHT:
SPEC.:	DIM.:	SERIAL No.:
MFR.:	SUR.:	Shielding Angle:

pcc	80%			70%			50%			30%			10%			0
pw	50%	30%	10%	50%	30%	10%	50%	30%	10%	50%	30%	10%	50%	30%	10%	0
pfc	20%			20%			20%			20%			20%			0
RCR	RCR:Room Cavity Ratio						Wall Exitance Coefficients(WEC)									
0.0																
1.0	.460	.261	.083	.444	.253	.080	.414	.237	.076	.386	.223	.072	.361	.209	.067	
2.0	.380	.208	.064	.365	.201	.062	.338	.188	.058	.313	.175	.055	.290	.164	.052	
3.0	.328	.175	.052	.315	.169	.051	.291	.157	.048	.268	.147	.045	.246	.136	.042	
4.0	.290	.151	.044	.278	.146	.043	.256	.136	.041	.235	.126	.038	.215	.117	.036	
5.0	.261	.133	.038	.250	.128	.037	.229	.119	.035	.210	.111	.033	.192	.103	.031	
6.0	.236	.118	.034	.226	.114	.033	.207	.106	.031	.190	.099	.029	.173	.091	.027	
7.0	.216	.107	.030	.207	.103	.029	.190	.096	.028	.173	.089	.026	.158	.082	.024	
8.0	.199	.097	.027	.191	.094	.027	.175	.087	.025	.160	.081	.023	.146	.075	.022	
9.0	.185	.089	.025	.177	.086	.024	.162	.080	.023	.148	.074	.021	.135	.069	.020	
10.0	.172	.082	.023	.165	.080	.022	.151	.074	.021	.138	.069	.019	.126	.063	.018	

pcc	80%			70%			50%			30%			10%			0
pw	50%	30%	10%	50%	30%	10%	50%	30%	10%	50%	30%	10%	50%	30%	10%	0
pfc	20%			20%			20%			20%			20%			0
RCR	RCR:Room Cavity Ratio						Ceiling Cavity Exitance Coefficients(CCEC)									
0.0	.404	.404	.404	.345	.345	.345	.235	.235	.235	.135	.135	.135	.043	.043	.043	
1.0	.406	.370	.337	.347	.317	.290	.237	.218	.201	.137	.126	.117	.044	.041	.038	
2.0	.400	.348	.304	.343	.299	.263	.235	.207	.183	.135	.121	.107	.043	.039	.035	
3.0	.393	.332	.284	.337	.287	.246	.231	.199	.172	.134	.116	.102	.043	.038	.033	
4.0	.386	.320	.271	.331	.277	.235	.227	.193	.166	.132	.113	.098	.042	.037	.032	
5.0	.378	.311	.262	.324	.269	.228	.223	.188	.161	.129	.110	.095	.042	.036	.031	
6.0	.370	.303	.256	.318	.263	.223	.219	.184	.158	.127	.108	.094	.041	.035	.031	
7.0	.362	.297	.251	.312	.258	.219	.215	.181	.155	.125	.106	.092	.040	.035	.031	
8.0	.355	.292	.248	.306	.253	.216	.212	.178	.153	.123	.105	.091	.040	.034	.030	
9.0	.349	.287	.245	.300	.249	.214	.208	.175	.152	.121	.103	.091	.039	.034	.030	
10.0	.343	.283	.243	.295	.246	.212	.205	.173	.151	.120	.102	.090	.039	.034	.030	

C Range: 0 - 360DEG  
 C Interval: 22.5DEG  
 Test Speed: HIGH  
 Temperature:25.3DEG  
 Operators:DAMIN  
 Test Date:2022-09-09

γ Range: 0 - 180DEG  
 γ Interval: 1.0DEG  
 Test System:EVERFINE GO-3000H\_V1 SYSTEM V2.00.411  
 Humidity:65.0%  
 Test Distance:9.000m [K=1.0000]  
 Remarks:

UGR(Unified Glare Rating) Table

Test:U:119.96V I:0.1201A P:14.121W PF:0.9798 Freq:50.00Hz Lamp Flux:509.418x1 lm										
NAME: SES-WL217					TYPE:			WEIGHT:		
SPEC.:					DIM.:			SERIAL No.:		
MFR.:					SUR.:			Shielding Angle:		
ceiling/cavity	0.7	0.7	0.5	0.5	0.3	0.7	0.7	0.5	0.5	0.3
walls	0.5	0.3	0.5	0.3	0.3	0.5	0.3	0.5	0.3	0.3
working plane	0.2	0.2	0.2	0.2	0.2	0.2	0.2	0.2	0.2	0.2
Room dimensions	Viewed crosswise					Viewed endwise				
x = 2H y = 2H	17.1	18.5	17.7	19.1	19.9	22.2	23.6	22.8	24.2	25.0
3H	19.4	20.7	20.1	21.4	22.2	24.1	25.4	24.7	26.0	26.9
4H	20.8	22.0	21.5	22.7	23.6	25.0	26.2	25.6	26.9	27.7
6H	22.3	23.4	23.0	24.2	25.0	26.1	27.2	26.8	27.9	28.8
8H	23.1	24.2	23.8	25.0	25.8	26.9	28.0	27.6	28.7	29.6
12H	24.1	25.1	24.8	25.9	26.8	28.0	29.0	28.7	29.8	30.7
4H 2H	20.7	21.9	21.4	22.6	23.4	23.2	24.4	23.9	25.1	26.0
3H	23.1	24.2	23.8	24.9	25.8	25.7	26.7	26.4	27.5	28.4
4H	24.3	25.3	25.0	26.1	27.0	26.8	27.8	27.6	28.6	29.5
6H	25.6	26.5	26.3	27.2	28.2	28.1	29.0	28.9	29.8	30.7
8H	26.3	27.1	27.1	27.9	28.9	28.9	29.7	29.7	30.5	31.5
12H	27.1	27.9	27.9	28.7	29.7	30.0	30.8	30.8	31.6	32.6
8H 4H	26.8	27.6	27.5	28.4	29.3	28.2	29.0	28.9	29.8	30.7
6H	28.5	29.3	29.3	30.1	31.1	29.9	30.6	30.7	31.5	32.4
8H	29.3	30.0	30.2	30.8	31.8	30.9	31.5	31.7	32.3	33.3
12H	30.2	30.7	31.0	31.6	32.6	32.0	32.6	32.8	33.4	34.5
12H 4H	27.2	28.0	28.0	28.8	29.7	28.4	29.2	29.2	30.0	30.9
6H	29.6	30.2	30.4	31.1	32.1	30.6	31.3	31.4	32.1	33.1
8H	30.7	31.3	31.5	32.1	33.1	31.8	32.4	32.6	33.2	34.2
Variations with the observer position at spacings:										
S = 1.0H	+ 0.1 / - 0.1					+ 0.1 / - 0.1				
1.5H	+ 0.1 / - 0.3					+ 0.2 / - 0.4				
2.0H	+ 0.2 / - 0.4					+ 0.3 / - 0.5				

CIE Pub.117, 509.4 lm Total Lamp Luminous Flux Corrected (8log(F/F0) = -2.3)  
 Area: 0.029 m2

C Range: 0 - 360DEG  
 C Interval: 22.5DEG  
 Test Speed: HIGH  
 Temperature:25.3DEG  
 Operators:DAMIN  
 Test Date:2022-09-09

γ Range: 0 - 180DEG  
 γ Interval: 1.0DEG  
 Test System:EVERFINE GO-3000H\_V1 SYSTEM V2.00.411  
 Humidity:65.0%  
 Test Distance:9.000m [K=1.0000]  
 Remarks:

UTILIZATION FACTORS TABLE

Test:U:119.96V I:0.1201A P:14.121W PF:0.9798 Freq:50.00Hz Lamp Flux:509.418x1 lm		
NAME: SES-WL217	TYPE:	WEIGHT:
SPEC.:	DIM.:	SERIAL No.:
MFR.:	SUR.:	Shielding Angle:

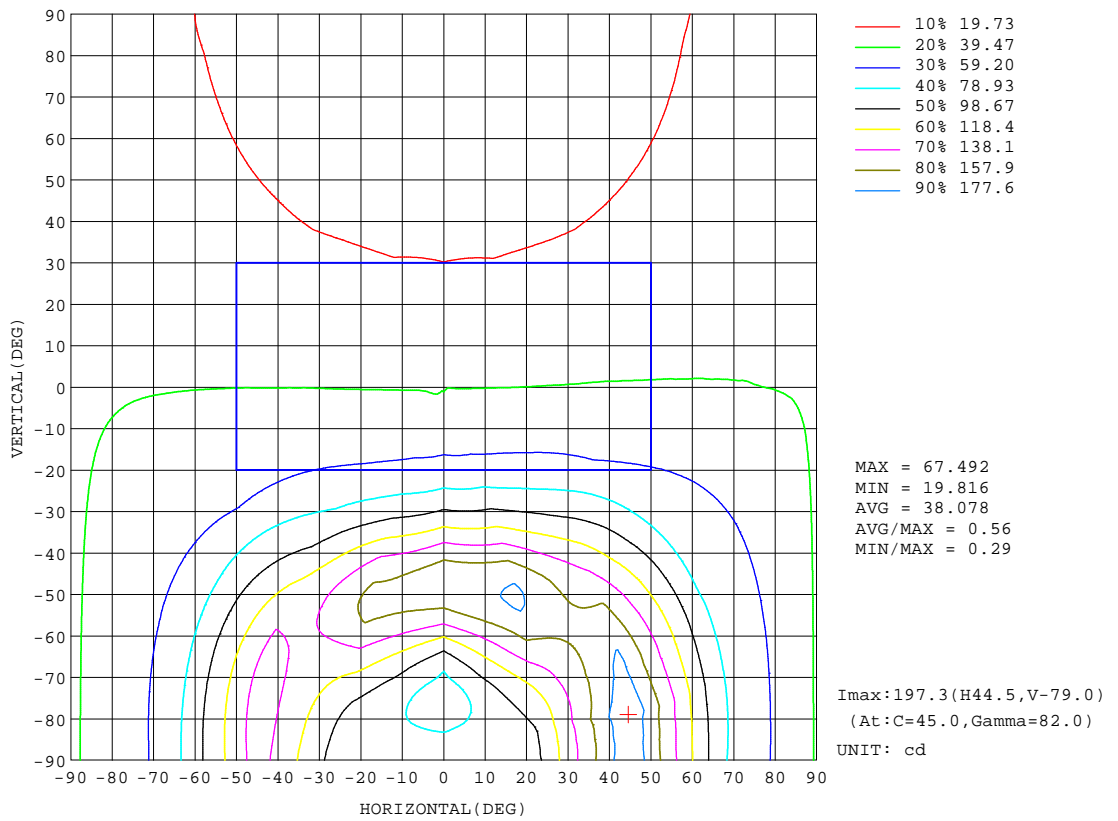
REFLECTANCE										
Ceiling	0.8	0.8	0.8	0.7	0.7	0.7	0.5	0.5	0.5	0
Walls	0.7	0.5	0.3	0.7	0.5	0.3	0.7	0.5	0.3	0
Working plane	0.2	0.2	0.2	0.2	0.2	0.2	0.2	0.2	0.2	0
ROOM INDEX	UTILIZATION FACTORS(PERCENT) k(RI) x RCR = 5									
k = 0.60	38	25	17	37	24	17	35	23	16	9
0.80	47	32	23	45	32	23	42	30	22	14
1.00	55	40	30	52	38	29	48	39	28	18
1.25	62	47	37	59	45	36	54	42	34	23
1.50	67	52	42	64	50	41	58	47	39	27
2.00	75	61	51	71	59	50	65	54	46	33
2.50	80	67	58	76	65	56	69	59	52	37
3.00	84	73	63	80	69	61	72	63	56	40
4.00	90	80	71	85	76	68	76	69	63	45
5.00	93	84	77	88	80	73	79	73	67	49
ROOM INDEX	UF(total)									Direct
According to DIN EN 13032-2 2004			Suspended				SHRNOM = 1.25			

C Range: 0 - 360DEG  
 C Interval: 22.5DEG  
 Test Speed: HIGH  
 Temperature:25.3DEG  
 Operators:DAMIN  
 Test Date:2022-09-09

γ Range: 0 - 180DEG  
 γ Interval: 1.0DEG  
 Test System:EVERFINE GO-3000H\_V1 SYSTEM V2.00.411  
 Humidity:65.0%  
 Test Distance:9.000m [K=1.0000]  
 Remarks:

ISOCANDELA DIAGRAM

Test:U:119.96V I:0.1201A P:14.121W PF:0.9798 Freq:50.00Hz Lamp Flux:509.418x1 lm		
NAME: SES-WL217	TYPE:	WEIGHT:
SPEC.:	DIM.:	SERIAL No.:
MFR.:	SUR.:	Shielding Angle:



C Range: 0 - 360DEG  
 C Interval: 22.5DEG  
 Test Speed: HIGH  
 Temperature:25.3DEG  
 Operators:DAMIN  
 Test Date:2022-09-09

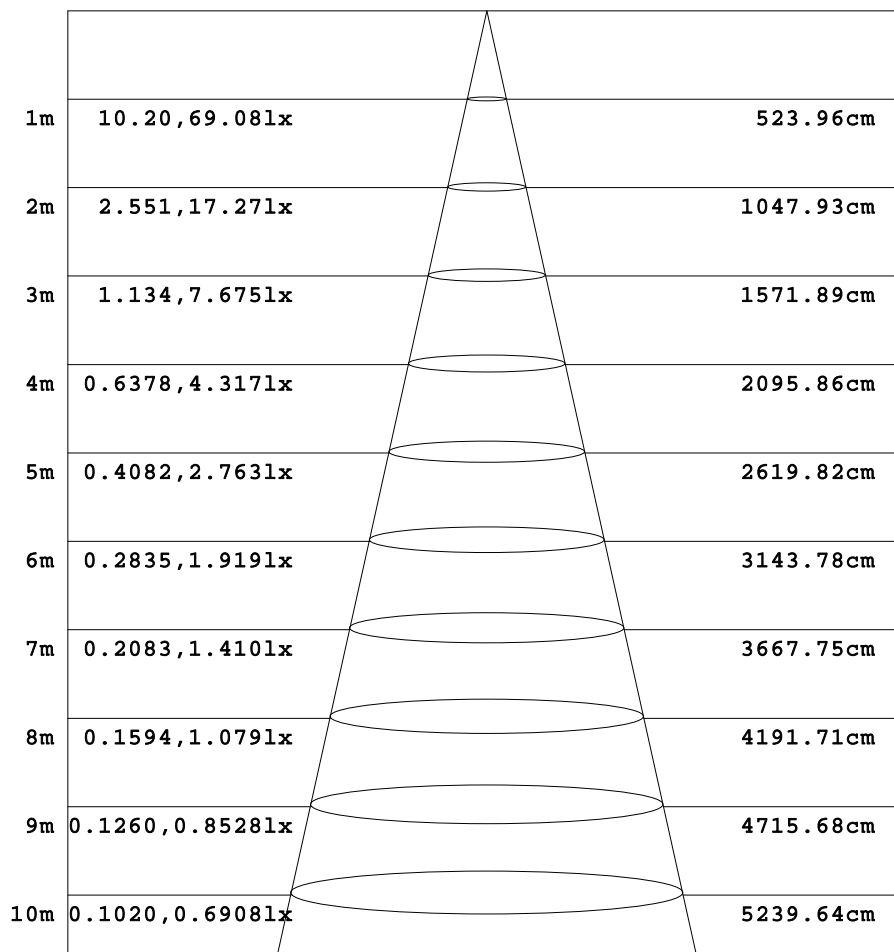
γ Range: 0 - 180DEG  
 γ Interval: 1.0DEG  
 Test System:EVERFINE GO-3000H\_V1 SYSTEM V2.00.411  
 Humidity:65.0%  
 Test Distance:9.000m [K=1.0000]  
 Remarks:



AAI Figure

Test:U:119.96V I:0.1201A P:14.121W PF:0.9798 Freq:50.00Hz Lamp Flux:509.418x1 lm		
NAME: SES-WL217	TYPE:	WEIGHT:
SPEC.:	DIM.:	SERIAL No.:
MFR.:	SUR.:	Shielding Angle:

Flux out:242.0 lm



Height Eavg, Emax Angle:138.22deg Diameter

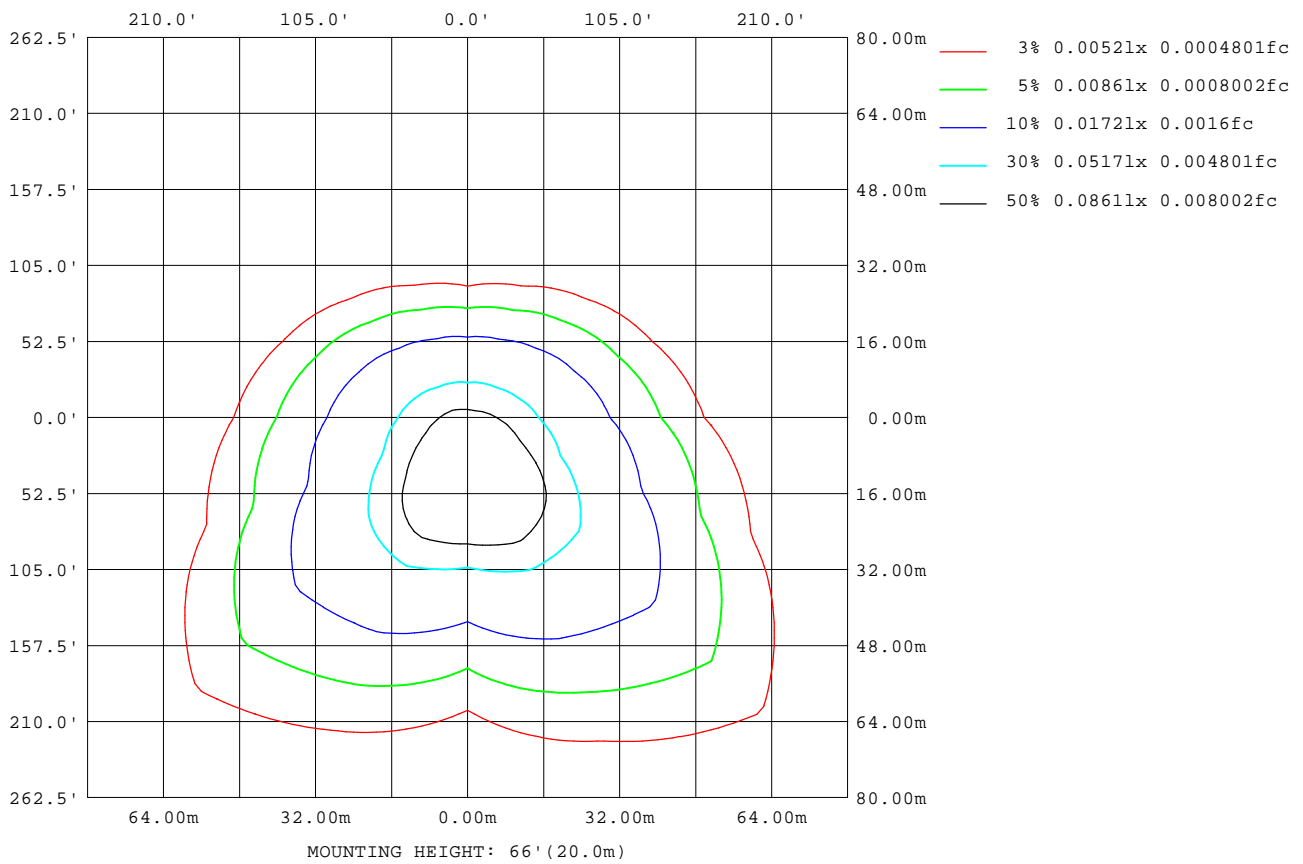
Note:The Curves indicate the illuminated area and the average illumination when the luminaire is at different distance.

C Range: 0 - 360DEG  
 C Interval: 22.5DEG  
 Test Speed: HIGH  
 Temperature:25.3DEG  
 Operators:DAMIN  
 Test Date:2022-09-09

γ Range: 0 - 180DEG  
 γ Interval: 1.0DEG  
 Test System:EVERFINE GO-3000H\_V1 SYSTEM V2.00.411  
 Humidity:65.0%  
 Test Distance:9.000m [K=1.0000]  
 Remarks:

ISOLUX DIAGRAM

Test:U:119.96V I:0.1201A P:14.121W PF:0.9798 Freq:50.00Hz Lamp Flux:509.418x1 lm		
NAME: SES-WL217	TYPE:	WEIGHT:
SPEC.:	DIM.:	SERIAL No.:
MFR.:	SUR.:	Shielding Angle:



C Range: 0 - 360DEG  
 C Interval: 22.5DEG  
 Test Speed: HIGH  
 Temperature: 25.3DEG  
 Operators: DAMIN  
 Test Date: 2022-09-09

γ Range: 0 - 180DEG  
 γ Interval: 1.0DEG  
 Test System: EVERFINE GO-3000H\_V1 SYSTEM V2.00.411  
 Humidity: 65.0%  
 Test Distance: 9.000m [K=1.0000]  
 Remarks:

LED Avg.L Report

Test:U:119.96V I:0.1201A P:14.121W PF:0.9798 Freq:50.00Hz Lamp Flux:509.418x1 lm		
NAME: SES-WL217	TYPE:	WEIGHT:
SPEC.:	DIM.:	SERIAL No.:
MFR.:	SUR.:	Shielding Angle:

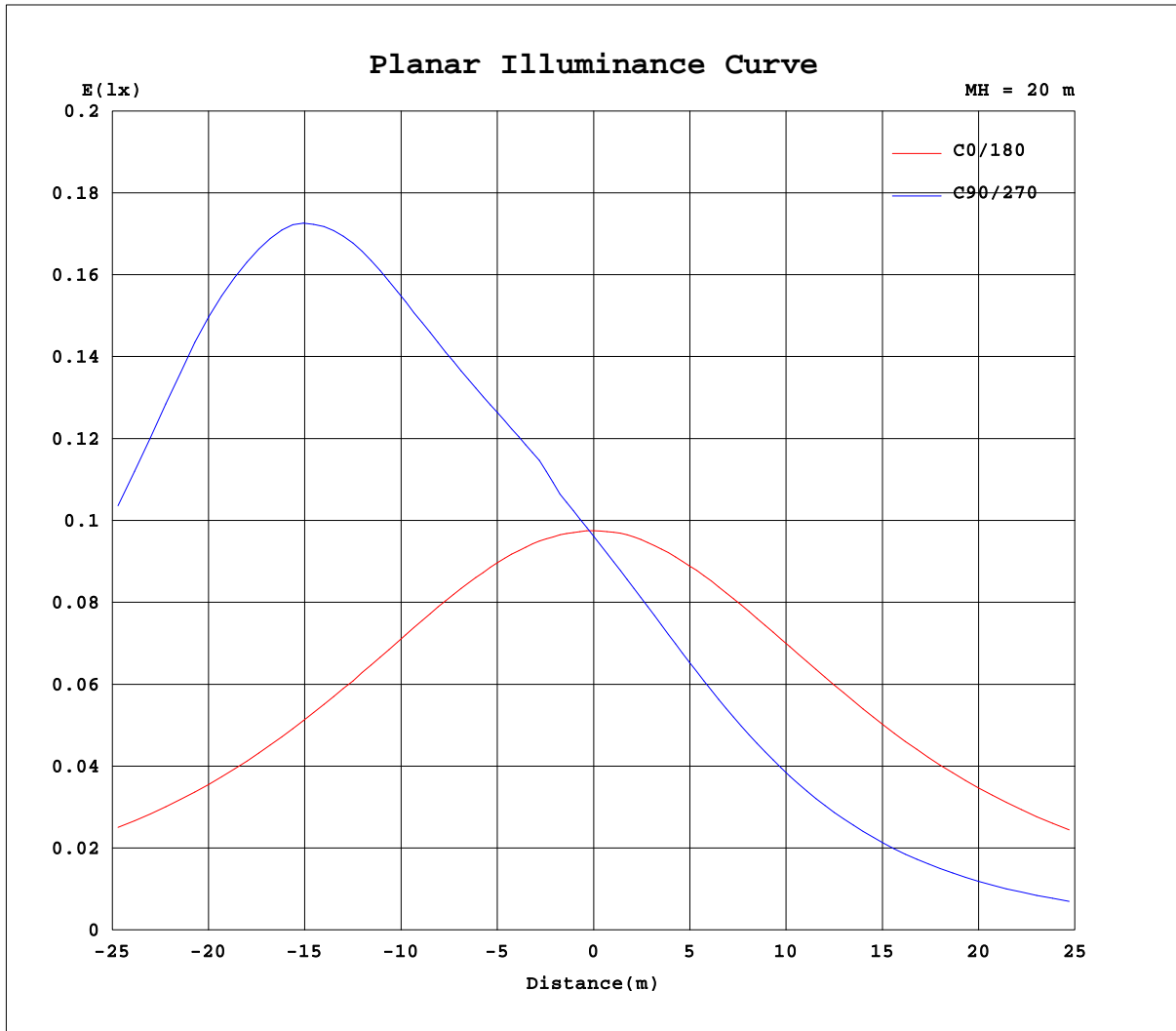
AvgL	cd/m2
L_0~180(65)av	3196
L_0~180(75)av	5158
L_0~180(85)av	14973
L_90~270(65)av	4030
L_90~270(75)av	4586
L_90~270(85)av	17055
L_45(65)av	6908
L_45(75)av	12184
L_45(85)av	37132

Standard: GB/T 29293-2012

C Range: 0 - 360DEG  
 C Interval: 22.5DEG  
 Test Speed: HIGH  
 Temperature:25.3DEG  
 Operators:DAMIN  
 Test Date:2022-09-09

$\gamma$  Range: 0 - 180DEG  
 $\gamma$  Interval: 1.0DEG  
 Test System:EVERFINE GO-3000H\_V1 SYSTEM V2.00.411  
 Humidity:65.0%  
 Test Distance:9.000m [K=1.0000]  
 Remarks:

### Planar Illuminance Curve



C Range: 0 - 360DEG  
C Interval: 22.5DEG  
Test Speed: HIGH  
Temperature: 25.3DEG  
Operators: DAMIN  
Test Date: 2022-09-09

$\gamma$  Range: 0 - 180DEG  
 $\gamma$  Interval: 1.0DEG  
Test System: EVERFINE GO-3000H\_V1 SYSTEM V2.00.411  
Humidity: 65.0%  
Test Distance: 9.000m [K=1.0000]  
Remarks:

LUMINOUS DISTRIBUTION INTENSITY DATA

Test:U:119.96V I:0.1201A P:14.121W PF:0.9798 Freq:50.00Hz Lamp Flux:509.418x1 lm		
NAME: SES-WL217	TYPE:	WEIGHT:
SPEC.:	DIM.:	SERIAL No.:
MFR.:	SUR.:	Shielding Angle:

Table--1

UNIT: cd

C(DEG) γ (DEG)	0	22.5	45	67.5	90	112.5	135	157.5	180	202.5	225	247.5	270	292.5	315	337.5			
0	38.8	38.8	38.8	38.8	38.8	38.8	38.8	38.8	38.8	38.8	38.8	38.8	38.8	38.8	38.8	38.8			
5	38.8	40.5	42.0	43.0	43.4	43.1	42.0	40.5	38.8	37.3	36.0	35.2	34.9	35.2	36.0	37.2			
10	38.9	42.5	46.7	48.1	50.0	48.1	45.8	42.1	38.7	35.8	33.4	32.0	31.4	32.0	33.5	35.9			
15	39.1	44.6	51.2	54.7	57.4	54.1	50.4	44.0	38.7	34.4	31.1	29.0	28.2	29.0	31.2	34.7			
20	39.3	46.8	56.7	63.3	67.4	61.9	55.0	45.8	38.8	33.1	28.9	26.2	25.3	26.2	29.1	33.5			
25	39.5	49.4	63.6	75.6	81.6	72.1	60.4	47.8	38.8	32.0	26.8	23.6	22.5	23.7	27.1	32.4			
30	39.6	52.1	72.5	92.2	101	85.9	66.9	49.9	39.0	31.0	25.0	20.9	20.0	21.0	25.3	31.4			
35	39.9	55.0	83.7	113	126	104	74.5	52.0	39.0	30.0	23.3	18.8	17.7	18.9	23.6	30.5			
40	40.0	58.2	97.1	137	151	124	83.4	54.0	39.0	29.1	21.8	16.9	15.6	17.0	22.1	29.7			
45	40.0	61.4	112	160	171	145	93.6	56.0	39.1	28.2	20.4	15.2	13.6	15.3	20.8	28.9			
50	40.0	64.7	127	177	170	159	105	58.0	39.0	27.5	19.2	13.7	11.8	13.7	19.7	28.1			
55	40.0	68.1	140	178	151	164	117	59.8	38.9	26.7	18.1	12.3	9.96	12.3	18.6	27.5			
60	39.9	71.2	155	165	121	155	129	61.5	38.8	26.1	17.2	11.0	8.04	11.0	17.7	26.8			
65	39.7	74.2	167	149	92.7	137	139	62.9	38.6	25.5	16.3	9.70	6.06	9.67	16.9	26.3			
70	39.6	76.7	177	129	76.4	119	146	64.1	38.4	24.9	15.6	8.48	4.17	8.39	16.2	25.7			
75	39.3	78.7	184	113	66.2	103	151	65.0	38.1	24.4	15.0	7.34	2.61	7.26	15.6	25.3			
80	39.0	79.8	193	101	70.9	91.7	153	65.3	37.7	23.9	14.5	6.38	1.45	6.31	15.1	24.8			
85	38.5	80.1	194	95.6	85.5	84.6	152	65.1	37.2	23.3	13.9	5.58	0.74	5.58	14.6	24.3			
90	37.8	78.9	195	92.7	99.2	79.6	151	64.5	36.5	22.4	13.3	5.07	0.35	5.08	14.0	23.4			
95	37.6	77.9	195	83.4	86.9	66.1	149	63.8	36.3	22.3	11.7	4.01	0.42	4.51	13.4	23.2			
100	37.3	75.5	191	70.6	59.9	48.7	144	62.6	36.0	22.2	9.65	2.19	0.50	2.90	11.4	23.1			
105	37.0	72.5	171	57.8	33.2	31.8	128	58.5	35.8	21.8	6.78	1.11	0.56	1.61	9.35	23.2			
110	33.5	63.4	143	37.5	5.14	16.8	101	49.7	31.1	18.5	5.36	0.88	0.58	1.15	7.05	21.0			
115	28.7	53.1	104	15.9	0.58	5.31	64.4	39.7	26.3	15.7	4.55	0.70	0.58	1.04	6.00	18.0			
120	24.3	40.8	59.1	4.81	0.07	2.08	32.8	30.3	21.9	13.2	4.20	0.55	0.58	0.79	5.12	15.4			
125	20.2	29.8	29.3	1.47	0.06	1.06	14.6	21.4	17.7	10.7	3.90	0.52	0.56	0.55	4.73	13.1			
130	16.1	20.7	13.9	0.73	0.07	0.46	4.70	13.7	13.6	8.23	2.58	0.48	0.53	0.50	4.22	10.7			
135	11.9	13.3	5.33	0.40	0.07	0.26	0.55	7.21	9.37	5.42	0.59	0.46	0.50	0.45	2.47	8.13			
140	7.50	6.90	0.62	0.28	0.08	0.22	0.32	1.38	4.90	2.11	0.52	0.45	0.48	0.40	0.48	5.08			
145	2.68	1.15	0.32	0.21	0.09	0.12	0.14	0.27	0.49	0.48	0.47	0.43	0.44	0.36	0.34	1.51			
150	0.38	0.32	0.21	0.13	0.09	0.11	0.10	0.18	0.36	0.42	0.42	0.41	0.41	0.33	0.29	0.29			
155	0.31	0.24	0.15	0.11	0.10	0.10	0.10	0.12	0.30	0.35	0.39	0.38	0.37	0.30	0.24	0.24			
160	0.26	0.20	0.15	0.12	0.11	0.11	0.11	0.12	0.27	0.32	0.36	0.35	0.33	0.26	0.22	0.19			
165	0.26	0.20	0.16	0.14	0.13	0.12	0.12	0.13	0.27	0.30	0.33	0.31	0.29	0.23	0.20	0.18			
170	0.26	0.22	0.18	0.15	0.14	0.13	0.13	0.14	0.27	0.28	0.29	0.27	0.26	0.21	0.19	0.17			
175	0.26	0.23	0.20	0.18	0.16	0.15	0.14	0.14	0.27	0.27	0.26	0.24	0.22	0.19	0.17	0.16			
180	0.27	0.25	0.23	0.21	0.19	0.17	0.16	0.15	0.27	0.25	0.23	0.20	0.19	0.17	0.16	0.15			

C Range: 0 - 360DEG  
 C Interval: 22.5DEG  
 Test Speed: HIGH  
 Temperature:25.3DEG  
 Operators:DAMIN  
 Test Date:2022-09-09

γ Range: 0 - 180DEG  
 γ Interval: 1.0DEG  
 Test System:EVERFINE GO-3000H\_V1 SYSTEM V2.00.411  
 Humidity:65.0%  
 Test Distance:9.000m [K=1.0000]  
 Remarks: