

Photometrics Pro

Luminaire Photometric Report

Filename: ML-WPA-26W-XX

Lamp Output: Total luminaire Lumens: 3548.7

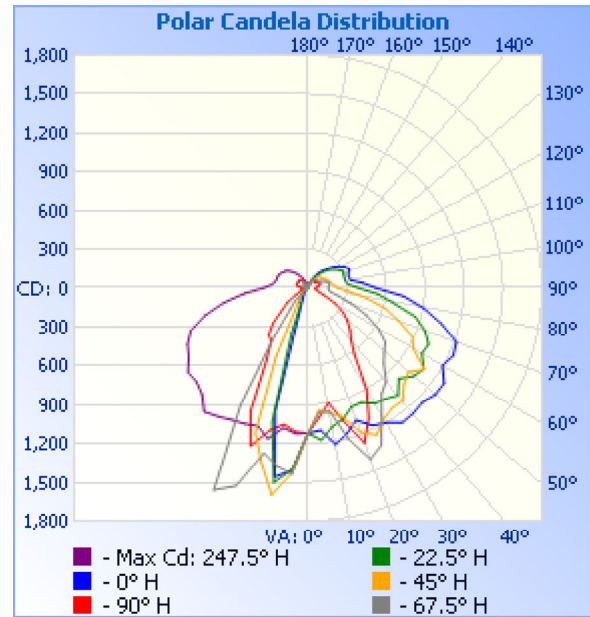
Max Candela: 1,718.9 at Horizontal: 247.5°, Vertical: 25°

Input Wattage: 25.067

Luminous Opening: Point

Photometry : Type C

Nema Type: 6 X 7

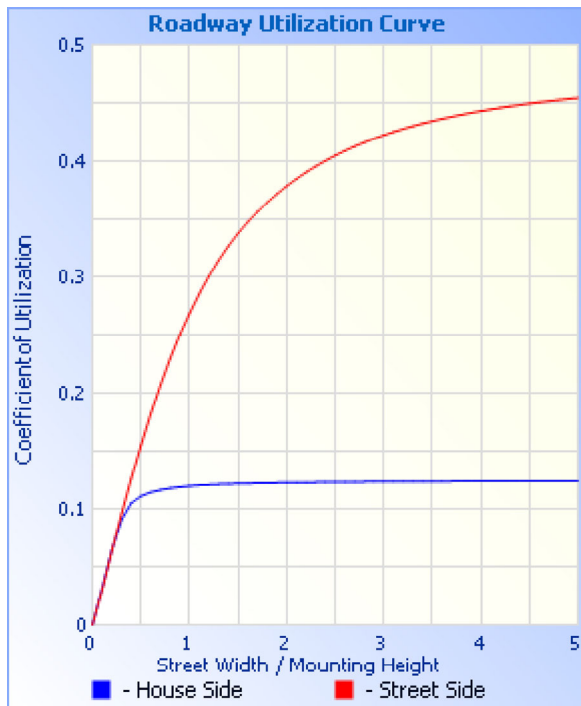
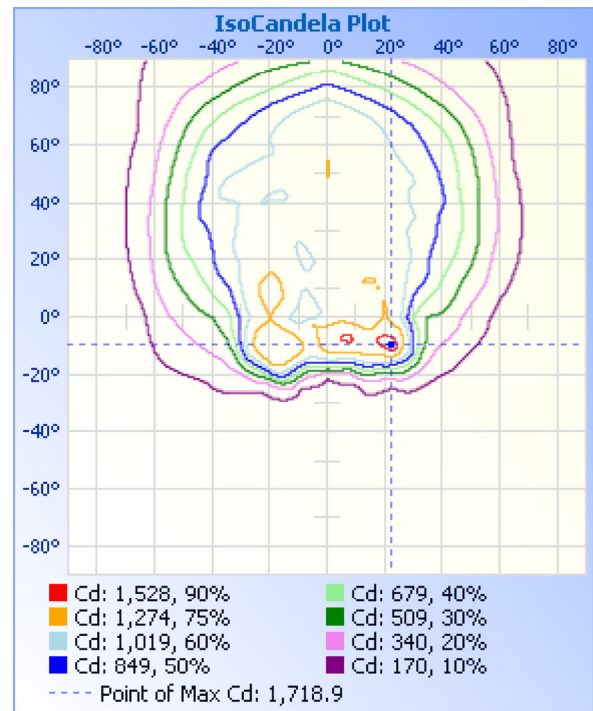
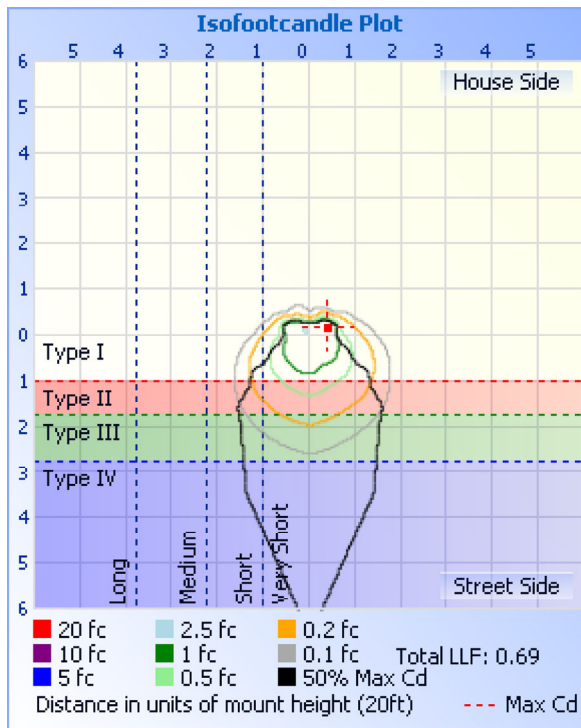


Roadway Summary		
Cutoff Classification:	NONCUTOFF	
Distribution:	TYPE IV, VERY SHORT	
Max Cd, 90 Deg Vert:	521.2	
Max Cd, 80 to <90 Deg:	904.4	
	Lumens % Lamp	
Downward Street Side:	2,392.7	67.4%
Downward House Side:	602.6	17%
Downward Total:	2,995.3	84.4%
Upward Street Side:	483.7	13.6%
Upward House Side:	70.9	2%
Upward Total:	554.6	15.6%
Total Lumens:	3,549.9	100%

Flood Summary				
	Efficiency	Lumens	Horizontal Spread	Vertical Spread
Field (10%):	88.8%	3,152.9	112.3	158.3
Beam (50%):	57.8%	2,049.8	59.7	88.7
Total:	100%	3,548.8		

Zonal Lumen Summary		
Zone	Lumens	% Luminaire
0-30	881.0	24.8%
0-40	1,292.0	36.4%
0-60	2,121.7	59.8%
60-90	872.2	24.6%
70-100	627.6	17.7%
90-120	357.8	10.1%
0-90	2,994.0	84.4%
90-180	554.8	15.6%
0-180	3,548.7	100%

Lumens Per Zone					
Zone	Lumens	% Total	Zone	Lumens	% Total
0-10	113.6	3.2%	90-100	133.9	3.8%
10-20	326.4	9.2%	100-110	118.8	3.3%
20-30	441.0	12.4%	110-120	105.0	3%
30-40	411.0	11.6%	120-130	82.1	2.3%
40-50	411.4	11.6%	130-140	60.8	1.7%
50-60	418.4	11.8%	140-150	36.1	1%
60-70	378.6	10.7%	150-160	14.7	0.4%
70-80	298.6	8.4%	160-170	3.0	0.1%
80-90	195.0	5.5%	170-180	0.2	0%



Illuminance at a Distance

	Center Beam fc	Beam Width	
2.5R	179 fc	4.9 ft	2.9 ft
5.0R	44.8 fc	9.8 ft	5.7 ft
7.5R	19.9 fc	14.7 ft	8.6 ft
10.0R	11.2 fc	19.6 ft	11.5 ft
12.5R	7.16 fc	24.4 ft	14.3 ft
15.0R	4.97 fc	29.3 ft	17.2 ft

Vert. Spread: 88.7°
Horiz. Spread: 59.7°

Coefficients Of Utilization - Zonal Cavity Method

Effective Floor Cavity Reflectance: 20%

RCC %:	80				70				50			30			10			0
RW %:	70	50	30	0	70	50	30	0	50	30	20	50	30	20	50	30	20	0
RCR: 0	1.15	1.15	1.15	1.15	1.11	1.11	1.11	.84	1.02	1.02	1.02	.95	.95	.95	.88	.88	.88	.84
1	1.03	.98	.93	.89	.99	.94	.90	.68	.87	.83	.80	.80	.78	.75	.74	.72	.70	.67
2	.94	.85	.78	.71	.89	.82	.75	.56	.75	.70	.65	.70	.65	.62	.65	.61	.58	.55
3	.85	.74	.66	.59	.81	.72	.64	.48	.66	.60	.55	.61	.56	.52	.57	.53	.49	.46

4	.78	.66	.57	.50	.75	.64	.55	.41	.59	.52	.47	.55	.49	.44	.51	.46	.42	.39
5	.72	.59	.50	.43	.69	.57	.49	.36	.53	.46	.40	.49	.43	.39	.46	.41	.37	.34
6	.67	.53	.44	.38	.64	.52	.43	.32	.48	.41	.36	.45	.39	.34	.42	.37	.33	.30
7	.62	.48	.40	.34	.59	.47	.39	.29	.44	.37	.32	.41	.35	.30	.39	.33	.29	.27
8	.58	.44	.36	.30	.55	.43	.35	.26	.40	.34	.29	.38	.32	.28	.36	.30	.26	.24
9	.54	.41	.33	.27	.52	.40	.32	.24	.37	.31	.26	.35	.29	.25	.33	.28	.24	.22
10	.51	.38	.30	.25	.49	.37	.29	.22	.35	.28	.24	.33	.27	.23	.31	.26	.22	.20

Candela Table - Type C																	
	0	22.5	45	67.5	90	112.5	135	157.5	180	202.5	225	247.5	270	292.5	315	337.5	360
0	1119	1119	1119	1119	1119	1119	1119	1119	1119	1119	1119	1119	1119	1119	1119	1119	1119
5	1100	1176	945	962	999	1304	1295	1385	1407	1403	1431	1440	1113	1117	1015	1125	1100
10	1222	1083	979	966	899	1120	1143	1213	1478	1523	1622	1392	1066	1050	1168	1094	1222
15	1160	1044	1025	1204	1065	1337	1426	1007	972	1070	1392	1316	1133	1033	1272	1201	1160
20	1084	975	1182	1402	1270	1543	1386	482	189	367	1186	1624	1295	1282	1292	1132	1084
25	1168	972	1247	1336	1105	1536	1174	171	102	130	589	1719	1049	1203	1161	1155	1168
30	1199	1027	1165	1133	899	1068	337	154	75	137	208	1038	640	1000	1136	1174	1199
35	1265	1042	1128	989	618	429	138	93	55	123	130	454	495	946	1114	1209	1265
40	1260	1078	1132	936	511	290	73	61	42	74	87	216	474	810	1024	1245	1260
45	1244	988	1045	825	458	205	58	42	28	50	58	144	380	738	1025	1156	1244
50	1277	1058	1008	766	395	121	52	32	18	35	44	63	257	682	957	1122	1277
55	1279	1088	1092	726	330	61	38	23	11	30	31	45	193	610	975	1131	1279
60	1195	1010	935	625	245	45	26	14	6	15	21	35	108	485	861	1062	1195
65	1234	1024	887	493	135	33	17	10	3	6	16	29	71	399	777	1024	1234
70	1215	957	743	354	86	25	15	10	3	4	14	26	54	283	689	963	1215
75	1063	853	618	242	67	24	16	6	3	4	16	26	46	178	551	823	1063
80	904	664	458	172	57	25	20	4	3	3	22	26	44	142	378	660	904
85	738	538	313	158	55	27	23	4	2	3	23	26	48	131	262	491	738
90	521	387	226	156	61	28	23	4	2	4	21	28	52	127	200	342	521
95	422	309	201	159	71	31	21	4	2	3	20	30	63	129	180	280	422
100	334	292	185	167	85	33	20	4	3	4	19	32	81	132	169	261	334
105	322	290	174	160	95	34	19	5	3	4	17	33	92	136	164	250	322
110	329	292	165	143	99	33	16	5	3	4	17	33	92	135	156	249	329
115	352	300	151	112	91	33	15	5	3	4	15	33	87	128	137	244	352
120	325	275	137	96	76	35	14	4	3	4	14	34	88	117	119	233	325
125	293	251	126	88	67	41	14	4	3	3	14	37	88	103	104	220	293
130	252	218	125	88	70	52	14	4	3	3	14	41	87	93	101	202	252
135	212	182	119	88	76	57	14	4	2	3	13	47	88	90	97	174	212
140	172	145	103	81	76	55	15	3	2	3	12	54	76	84	89	144	172
145	139	116	84	66	64	44	17	3	2	2	14	47	56	69	77	115	139
150	104	87	67	51	47	33	16	3	2	2	14	35	39	48	63	88	104
155	73	64	51	36	33	25	12	3	2	2	10	24	25	27	46	62	73
160	47	42	35	15	19	16	8	2	2	2	6	14	10	9	28	37	47
165	26	25	15	4	7	6	3	2	2	2	3	5	3	2	12	22	26
170	4	4	2	2	2	2	2	1	1	2	2	2	2	1	1	3	4
175	2	2	2	1	1	1	1	1	2	1	1	2	2	1	1	2	2
180	1	2	2	1	2	1	1	2	1	2	2	1	2	1	1	2	1

Luminaire Report Summary

IESNA:LM-63-2002

[TEST]

[TESTLAB]

[TESTDATE]

[ISSUEDATE]

[MANUFAC]

[LUMCAT]

[LUMINAIRE]

[LAMPCAT]

[LAMP]

[LumELE] 120.01 0.215 25.067 0.9729

FILE: CREATED USING ABSOLUTE PHOTOMETRY

FILE: CANDELA MULTIPLIER: 1

FILE: VERTICAL ANGLES: 37, HORIZONTAL ANGLES: 17

FILE: COORDINATE SYSTEM: TYPE C

FILE: UNIT OF MEASURE: METRIC

FILE: BALLAST FACTOR: 1

Photometrics Pro 1.3.29 copyright 2003-2023 by jSolutions, Inc.

Reported data calculated from manufacturer's data file, based on IES recommended methods.