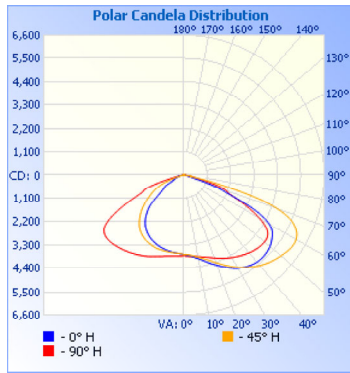


Photometrics Pro

Luminaire Photometric Report

Filename: 11384 SES-PL2-100W-5700K
Luminaire: LED
Lamp Output: 1 lamp, rated Lumens/lamp: 17251
Max Candela: 6,513.6 at Horizontal: 55°, Vertical: 58°
Input Wattage: 102.186
Luminous Opening: Point
Test: C
Test Date: 22 March 2023
Test Lab: EVERFINE
Photometry: Type C
Nema Type: 7 X 7



Roadway Summary

Cutoff Classification:	CUTOFF	
Distribution:	TYPE III, SHORT	
Max Cd, 90 Deg Vert:	29.2	
Max Cd, 80 to <90 Deg:	473.8	
	Lumens	% Lamp
Downward Street Side:	10,880.6	63.1%
Downward House Side:	6,201.4	35.9%
Downward Total:	17,082.0	99%
Upward Street Side:	58.4	0.3%
Upward House Side:	110.8	0.6%
Upward Total:	169.3	1%
Total Lumens:	17,251.2	100%

Flood Summary

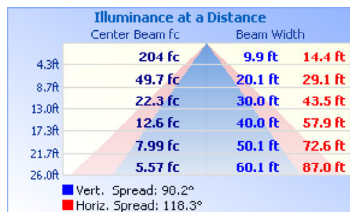
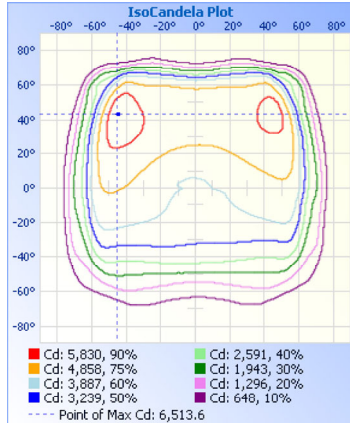
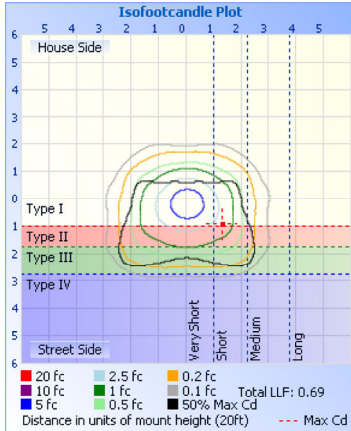
	Efficiency	Lumens	Horizontal Spread	Vertical Spread
Field (10%):	96.9%	16,712.0	142.9	138.1
Beam (50%):	78.6%	13,560.2	118.3	98.2
Total:	100%	17,245.4		

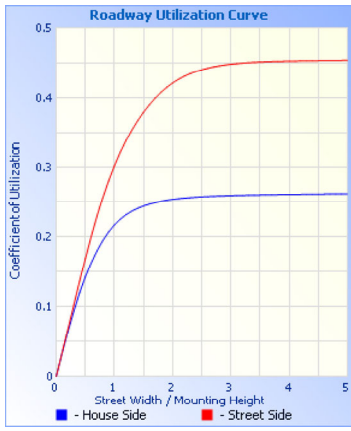
Zonal Lumen Summary

Zone	Lumens	% Lamp	% Luminaire
0-30	3,426.6	19.9%	19.9%
0-40	6,167.0	35.7%	35.8%
0-60	13,093.5	75.9%	75.9%
60-90	3,987.1	23.1%	23.1%
70-100	1,155.2	6.7%	6.7%
90-120	61.0	0.4%	0.4%
0-90	17,080.6	99%	99%
90-180	169.2	1%	1%
0-180	17,249.8	100%	100%

Lumens Per Zone

Zone	Lumens	% Total	Zone	Lumens	% Total
0-10	363.1	2.1%	90-100	13.7	0.1%
10-20	1,121.8	6.5%	100-110	20.7	0.1%
20-30	1,941.7	11.3%	110-120	26.6	0.2%
30-40	2,740.4	15.9%	120-130	29.0	0.2%
40-50	3,346.8	19.4%	130-140	26.9	0.2%
50-60	3,579.7	20.8%	140-150	22.1	0.1%
60-70	2,845.6	16.5%	150-160	16.4	0.1%
70-80	1,023.7	5.9%	160-170	10.3	0.1%
80-90	117.8	0.7%	170-180	3.6	0%





Coefficients Of Utilization - Zonal Cavity Method

Effective Floor Cavity Reflectance: 20%

RCC %:	80				70				50				30				10				0
RW %:	70	50	30	0	70	50	30	0	50	30	20	0	50	30	20	0	50	30	20	0	0
RCR: 0	1.19	1.19	1.19	1.19	1.16	1.16	1.16	.99	1.11	1.11	1.11	1.11	1.06	1.06	1.06	1.06	1.01	1.01	1.01	1.01	.99
1	1.08	1.04	.99	.95	1.06	1.01	.97	.83	.97	.93	.90	.88	.93	.90	.88	.88	.89	.87	.85	.83	.83
2	.98	.89	.82	.76	.95	.87	.81	.69	.83	.78	.73	.73	.80	.75	.71	.71	.77	.73	.70	.67	.67
3	.88	.77	.69	.62	.86	.75	.67	.57	.72	.65	.60	.60	.69	.64	.59	.59	.67	.62	.57	.55	.55
4	.80	.67	.58	.51	.78	.66	.57	.48	.63	.56	.50	.50	.61	.54	.49	.49	.58	.53	.48	.46	.46
5	.73	.59	.50	.43	.71	.58	.49	.40	.56	.48	.42	.42	.54	.47	.41	.41	.52	.46	.41	.38	.38
6	.67	.53	.43	.36	.65	.52	.43	.35	.50	.42	.36	.36	.48	.41	.35	.35	.46	.40	.35	.33	.33
7	.62	.47	.38	.32	.60	.46	.38	.30	.45	.37	.31	.31	.43	.36	.31	.31	.42	.35	.30	.28	.28
8	.57	.43	.34	.28	.55	.42	.33	.27	.41	.33	.27	.27	.39	.32	.27	.27	.38	.31	.27	.25	.25
9	.53	.39	.30	.24	.51	.38	.30	.24	.37	.29	.24	.24	.36	.29	.24	.24	.35	.28	.24	.22	.22
10	.49	.36	.27	.22	.48	.35	.27	.21	.34	.27	.22	.22	.33	.26	.21	.21	.32	.26	.21	.19	.19

Candela Table - Type C

Table with 18 columns (0-18) and 18 rows (0-18). Each cell contains a numerical value representing photometric data. The values are arranged in a grid pattern, with some cells containing bolded text like '6514'.

Luminaire Report Summary

IESNA: LM-63-2002
[TEST] C
[TESTLAB] EVERFINE
[TESTDATE] 22 March 2023
[ISSUEDATE] 2023-03-22 11:36:34
[NEARFIELD]
[LAMPPOSITION] 0,0
[OTHER] EVERFINE GO-2000B_V1 SYSTEM
[MANUFAC]
[LUMINAIRE] LED
FILE: CANDELA MULTIPLIER: 1
FILE: VERTICAL ANGLES: 181, HORIZONTAL ANGLES: 73
FILE: COORDINATE SYSTEM: TYPE C
FILE: UNIT OF MEASURE: METRIC
FILE: BALLAST FACTOR: 1

Photometrics Pro 1.3.29 copyright 2003-2023 by jSolutions, Inc.
Reported data calculated from manufacturer's data file, based on IES recommended methods.