

Photometrics Pro

Luminaire Photometric Report

Filename: MWP10 - Mini Wall Pack - 30W - IES

Manufacturer: SARIN Energy Solutions

Lamp Output: 1 lamp, rated Lumens/lamp: 3571.3

Max Candela: 1,857.0 at Horizontal: 0°, Vertical: 15°

Input Wattage: 29.38

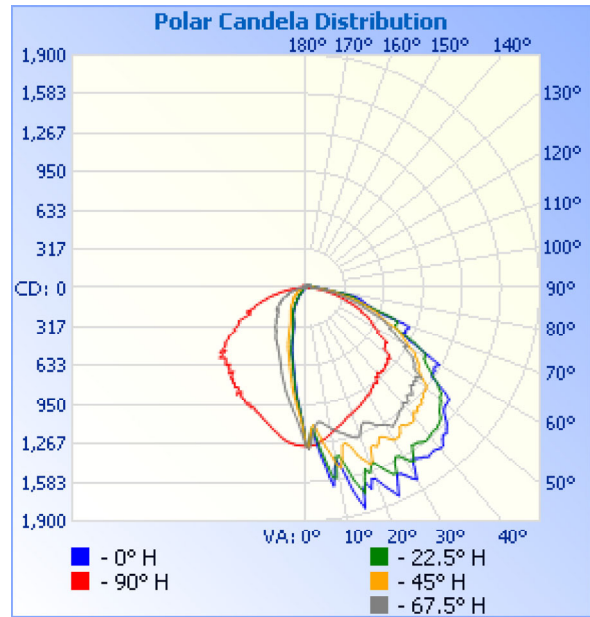
Luminous Opening: Point

Test: UTC2308054E-A

Test Lab: UTEST TECHNICAL LABORATORY CO.LTD

Photometry : Type C

Nema Type: 7 X 6



Roadway Summary

Cutoff Classification:	SEMICUTOFF	
Distribution:	TYPE III, VERY SHORT	
Max Cd, 90 Deg Vert:	88.3	
Max Cd, 80 to <90 Deg:	396.2	
	Lumens % Lamp	
Downward Street Side:	2,796.0	78.3%
Downward House Side:	663.5	18.6%
Downward Total:	3,459.5	96.9%
Upward Street Side:	80.7	2.3%
Upward House Side:	31.1	0.9%
Upward Total:	111.7	3.1%
Total Lumens:	3,571.3	100%

Flood Summary

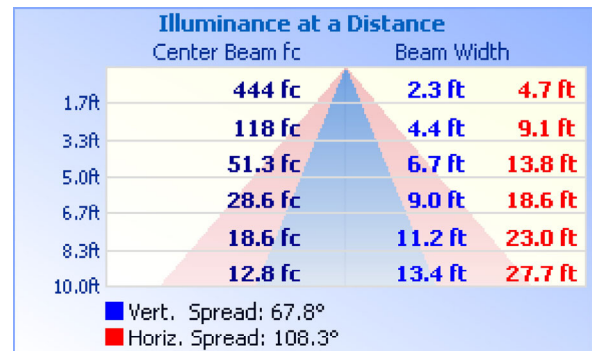
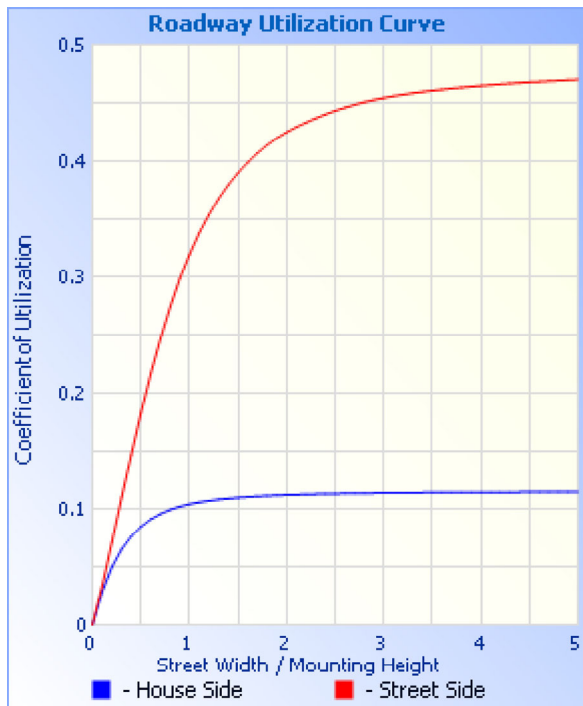
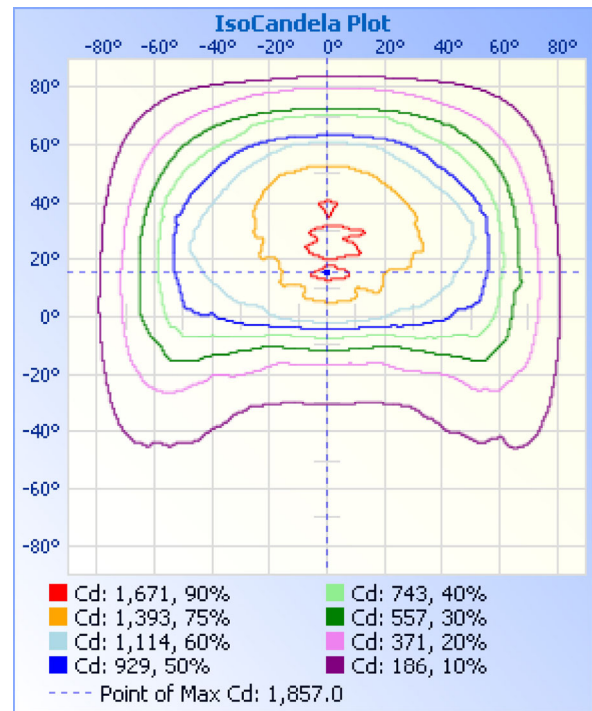
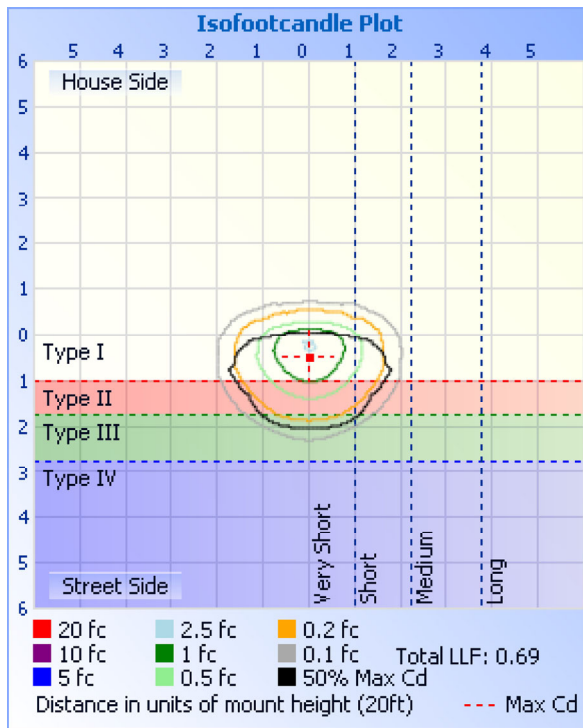
	Efficiency	Lumens	Horizontal Spread	Vertical Spread
Field (10%):	92.5%	3,302.4	160	114.5
Beam (50%):	61%	2,176.9	108.3	67.8
Total:	100%	3,570.7		

Zonal Lumen Summary

Zone	Lumens	% Lamp	% Luminaire
0-30	829.9	23.2%	23.2%
0-40	1,381.5	38.7%	38.7%
0-60	2,603.5	72.9%	72.9%
60-90	855.7	24%	24%
70-100	412.2	11.5%	11.5%
90-120	75.1	2.1%	2.1%
0-90	3,459.2	96.9%	96.9%
90-180	111.8	3.1%	3.1%
0-180	3,571.0	100%	100%

Lumens Per Zone

Zone	Lumens	% Total	Zone	Lumens	% Total
0-10	106.2	3.0%	90-100	30.6	0.9%
10-20	290.3	8.1%	100-110	23.6	0.7%
20-30	433.4	12.1%	110-120	20.8	0.6%
30-40	551.7	15.4%	120-130	15.0	0.4%
40-50	617.8	17.3%	130-140	8.5	0.2%
50-60	604.2	16.9%	140-150	6.6	0.2%
60-70	474.1	13.3%	150-160	4.3	0.1%
70-80	282.7	7.9%	160-170	1.9	0.1%
80-90	99.0	2.8%	170-180	0.4	0%



Coefficients Of Utilization - Zonal Cavity Method

Effective Floor Cavity Reflectance: 20%

RCC %:	80				70				50			30			10			0
RW %:	70	50	30	0	70	50	30	0	50	30	20	50	30	20	50	30	20	0
RCR: 0	1.18	1.18	1.18	1.18	1.15	1.15	1.15	.97	1.09	1.09	1.09	1.04	1.04	1.04	.99	.99	.99	.97
1	1.07	1.02	.97	.93	1.04	.99	.95	.80	.95	.91	.88	.90	.87	.85	.86	.84	.82	.79
2	.97	.88	.81	.75	.94	.86	.79	.66	.82	.76	.72	.78	.73	.69	.75	.71	.67	.65
3	.88	.77	.68	.61	.85	.75	.67	.56	.72	.65	.59	.68	.63	.58	.65	.61	.56	.54

4	.80	.68	.59	.52	.78	.66	.58	.47	.63	.56	.50	.60	.54	.49	.58	.52	.48	.46
5	.73	.60	.51	.44	.71	.59	.50	.41	.56	.49	.43	.54	.47	.42	.52	.46	.41	.39
6	.68	.54	.45	.38	.66	.53	.44	.36	.51	.43	.37	.49	.42	.37	.47	.41	.36	.34
7	.63	.49	.40	.33	.61	.48	.39	.31	.46	.38	.33	.44	.37	.32	.43	.36	.32	.30
8	.58	.44	.36	.30	.56	.43	.35	.28	.42	.34	.29	.40	.34	.29	.39	.33	.28	.26
9	.54	.41	.32	.26	.53	.40	.32	.25	.38	.31	.26	.37	.30	.26	.36	.30	.25	.23
10	.51	.37	.29	.24	.49	.37	.29	.23	.35	.28	.24	.34	.28	.23	.33	.27	.23	.21

Candela Table - Type C

	0	22.5	45	67.5	90	112.5	135	157.5	180	202.5	225	247.5	270	292.5	315	337.5	360
0	1283	1283	1283	1283	1283	1283	1283	1283	1283	1283	1283	1283	1283	1283	1283	1283	1283
1	1295	1297	1301	1312	1283	1222	1171	1137	1142	1149	1166	1222	1281	1341	1357	1319	1295
2	1154	1142	1152	1256	1281	1165	1094	1055	1055	1061	1085	1164	1281	1350	1224	1158	1154
3	1191	1160	1117	1170	1278	1118	1037	991	989	992	1029	1114	1281	1268	1154	1169	1191
4	1272	1229	1146	1115	1269	1073	987	932	929	935	982	1070	1277	1186	1178	1237	1272
5	1361	1310	1196	1096	1259	1037	940	880	871	884	936	1035	1269	1146	1229	1319	1361
6	1438	1377	1248	1098	1245	1006	898	827	808	832	894	1004	1264	1133	1284	1397	1438
7	1550	1464	1300	1108	1237	974	852	764	748	774	852	970	1255	1140	1342	1471	1550
8	1629	1557	1342	1125	1222	942	806	709	694	715	809	940	1247	1156	1391	1572	1629
9	1484	1567	1398	1141	1211	910	758	662	648	668	762	909	1236	1177	1443	1610	1484
10	1420	1393	1464	1159	1194	879	715	623	608	629	719	881	1222	1193	1514	1440	1420
11	1480	1387	1491	1173	1184	850	673	589	572	594	675	856	1206	1209	1565	1408	1480
12	1572	1440	1412	1192	1169	824	637	557	542	561	639	826	1193	1228	1541	1471	1572
13	1692	1526	1311	1203	1158	800	604	526	505	531	608	797	1181	1252	1408	1557	1692
14	1777	1616	1297	1216	1148	769	576	491	457	493	576	769	1169	1266	1362	1657	1777
15	1857	1675	1317	1230	1139	743	550	446	413	448	550	744	1154	1277	1382	1727	1857
16	1698	1744	1352	1247	1125	713	526	408	374	408	526	718	1144	1294	1424	1801	1698
17	1662	1626	1414	1263	1112	687	502	372	339	370	502	691	1131	1312	1476	1704	1662
18	1723	1549	1454	1277	1100	662	474	337	319	337	473	664	1122	1336	1536	1602	1723
19	1644	1595	1484	1287	1096	642	439	317	304	315	438	640	1109	1352	1576	1643	1644
20	1656	1547	1525	1279	1089	620	411	302	293	298	410	620	1098	1369	1619	1623	1656
21	1705	1516	1507	1237	1080	606	382	290	283	285	381	602	1087	1363	1641	1580	1705
22	1755	1552	1401	1204	1074	600	357	279	274	275	355	584	1086	1306	1553	1611	1755
23	1800	1596	1387	1187	1064	586	335	269	265	265	330	568	1066	1252	1487	1655	1800
24	1853	1633	1410	1200	1061	572	319	260	257	257	312	555	1064	1218	1507	1693	1853
25	1767	1672	1393	1207	1050	559	304	252	249	249	297	540	1074	1224	1516	1732	1767
26	1685	1680	1353	1228	1038	551	293	243	238	242	286	523	1048	1238	1470	1752	1685
27	1697	1584	1357	1256	1034	540	283	234	226	234	276	520	1061	1254	1450	1655	1697
28	1731	1552	1375	1260	1020	530	276	224	214	224	268	508	1050	1280	1467	1600	1731
29	1771	1561	1401	1275	1008	514	270	211	201	213	259	495	1037	1306	1482	1617	1771
30	1802	1599	1426	1283	1005	506	262	199	188	202	252	488	1035	1312	1530	1650	1802
31	1713	1638	1425	1300	1004	497	255	188	176	189	245	481	1024	1333	1532	1690	1713
32	1632	1660	1424	1329	990	474	248	176	163	177	237	465	991	1324	1535	1717	1632
33	1648	1593	1406	1318	973	479	241	165	151	166	229	451	1032	1339	1521	1654	1648
34	1666	1540	1362	1304	973	467	234	153	140	155	224	434	979	1362	1484	1574	1666
35	1673	1547	1359	1294	955	443	225	142	129	144	218	419	982	1346	1461	1567	1673
36	1694	1549	1384	1278	951	446	218	132	118	132	212	423	990	1305	1457	1571	1694
37	1685	1567	1385	1257	964	443	211	122	108	123	204	407	964	1297	1484	1596	1685
38	1679	1580	1394	1255	917	428	201	113	99	114	199	406	970	1309	1492	1590	1679
39	1687	1573	1392	1248	931	410	191	105	91	105	193	397	944	1316	1505	1587	1687
40	1700	1570	1362	1223	896	403	183	97	82	97	185	375	955	1318	1510	1576	1700
41	1698	1558	1336	1241	918	412	179	89	75	90	174	368	901	1311	1475	1571	1698
42	1658	1556	1354	1244	911	370	178	82	69	82	165	360	936	1273	1418	1566	1658
43	1632	1558	1325	1197	923	361	172	76	63	76	159	360	910	1268	1401	1572	1632
44	1643	1548	1329	1199	912	359	162	69	57	70	156	352	904	1291	1420	1559	1643
45	1615	1537	1333	1223	909	345	155	64	52	64	155	322	877	1240	1407	1542	1615
46	1592	1522	1299	1195	893	350	149	59	48	59	152	328	907	1206	1383	1533	1592

47	1548	1480	1305	1159	906	361	145	55	44	54	147	323	893	1199	1365	1485	1548
48	1507	1463	1276	1180	893	346	139	51	41	50	141	308	876	1234	1333	1477	1507
49	1488	1445	1280	1157	871	334	136	47	38	47	134	301	870	1214	1308	1438	1488
50	1482	1429	1274	1170	892	338	134	44	35	44	129	295	881	1181	1274	1406	1482
51	1478	1400	1261	1143	866	334	128	41	33	41	128	297	903	1185	1272	1396	1478
52	1475	1396	1201	1189	806	307	119	39	31	39	127	288	830	1207	1271	1377	1475
53	1420	1351	1164	1105	802	310	109	37	29	37	122	283	875	1179	1228	1355	1420
54	1322	1324	1126	1085	796	315	105	35	28	35	114	302	812	1126	1181	1338	1322
55	1249	1263	1120	1076	784	282	107	33	26	33	106	292	799	1164	1154	1279	1249
56	1237	1225	1103	1047	797	287	109	32	25	32	100	284	789	1116	1133	1219	1237
57	1245	1179	1075	1031	731	281	107	29	24	30	96	259	751	1135	1107	1186	1245
58	1225	1144	1049	970	685	269	101	28	23	29	94	253	737	1088	1085	1156	1225
59	1233	1120	1032	929	685	282	98	27	22	27	89	245	668	1079	1058	1140	1233
60	1251	1114	972	948	644	260	91	25	20	26	88	239	678	992	1011	1120	1251
61	1135	1111	944	871	627	256	84	24	19	24	88	243	641	939	944	1121	1135
62	1029	1042	911	825	604	239	79	23	18	23	87	222	619	948	922	1094	1029
63	944	994	880	810	597	224	78	22	17	22	85	222	610	889	893	1008	944
64	894	920	868	751	566	217	75	20	16	21	80	221	608	830	886	934	894
65	870	843	831	765	554	214	72	19	15	19	76	204	501	818	857	872	870
66	887	803	797	713	498	207	73	18	14	19	72	202	507	736	838	827	887
67	877	786	717	700	492	195	72	17	12	18	70	172	485	713	790	809	877
68	890	786	682	646	475	183	67	16	11	16	69	159	520	695	740	805	890
69	899	798	641	590	438	164	63	14	10	15	64	150	454	646	689	790	899
70	843	785	624	552	416	165	59	14	9	14	61	159	441	606	642	800	843
71	685	736	615	515	396	158	57	12	8	12	57	153	428	579	613	788	685
72	598	645	559	485	350	142	53	10	7	11	55	153	389	548	596	685	598
73	564	557	527	456	340	134	48	10	6	10	49	139	375	503	554	585	564
74	531	486	497	402	308	128	45	9	4	9	43	130	337	462	553	529	531
75	496	453	444	385	280	118	41	7	3	8	39	117	327	422	513	489	496
76	487	437	410	347	261	110	38	6	2	7	39	106	298	383	457	456	487
77	466	423	379	317	237	99	32	6	2	6	38	100	272	345	420	444	466
78	450	407	333	286	215	90	31	5	2	5	36	87	241	331	380	422	450
79	434	389	301	271	186	80	30	5	2	5	32	82	221	294	328	404	434
80	396	359	263	229	178	72	28	4	2	5	31	73	203	260	309	380	396
81	307	303	245	204	145	69	25	5	2	5	29	69	174	238	276	333	307
82	230	239	224	177	127	63	22	4	2	5	27	64	156	211	251	258	230
83	205	192	192	162	107	56	20	4	2	5	23	58	129	177	225	206	205
84	192	176	161	137	86	46	18	5	3	5	20	48	116	166	185	187	192
85	171	159	138	111	72	41	17	4	2	5	18	42	97	139	153	172	171
86	151	142	116	92	56	35	16	4	2	4	17	38	75	112	135	150	151
87	136	125	99	73	44	31	14	4	2	4	16	33	65	92	112	132	136
88	120	109	86	63	32	29	14	4	2	4	15	30	45	73	96	116	120
89	102	94	75	53	26	28	13	4	2	4	14	27	36	62	83	100	102
90	88	81	66	48	24	25	13	3	2	4	14	25	28	52	74	86	88
91	77	70	58	43	22	23	11	4	2	4	13	23	23	46	64	76	77
92	67	63	52	41	23	22	11	3	2	4	12	21	23	41	57	67	67
93	61	59	49	39	23	21	10	4	2	4	11	20	22	38	50	60	61
94	57	55	45	37	23	20	10	4	2	4	10	19	23	37	47	57	57
95	54	52	44	37	23	20	9	4	2	2	10	18	22	35	45	52	54

96	51	49	41	36	23	19	9	4	2	4	10	17	22	35	41	49	51
97	50	47	39	35	24	19	9	4	2	3	9	16	23	34	39	47	50
98	47	43	38	34	25	19	9	4	2	4	9	16	22	34	37	43	47
99	45	41	36	34	24	18	9	4	2	4	8	16	23	33	35	41	45
100	43	40	35	33	25	18	9	4	3	4	8	16	23	33	35	40	43
101	43	39	35	33	24	18	8	4	2	3	8	16	24	33	35	39	43
102	42	38	34	32	25	18	8	4	2	4	8	15	24	32	34	39	42
103	42	38	34	32	26	17	8	4	2	3	8	15	24	32	33	38	42
104	42	39	33	32	26	18	8	4	2	4	8	15	25	31	33	39	42
105	42	39	33	32	27	18	8	4	3	4	8	15	24	31	33	38	42
106	41	39	33	31	26	18	8	4	3	4	8	16	25	31	33	38	41
107	41	39	33	31	27	18	8	4	3	3	8	15	26	30	32	38	41
108	41	39	32	31	27	17	8	4	3	4	8	15	25	30	32	38	41
109	41	38	32	31	27	18	8	3	3	4	8	16	27	31	32	37	41
110	40	38	32	30	27	17	8	3	3	4	7	15	26	31	32	37	40
111	39	37	32	31	27	18	8	3	3	4	8	15	27	31	32	37	39
112	37	37	31	31	28	18	8	4	3	4	8	15	27	30	32	36	37
113	32	36	31	31	27	17	8	4	3	4	8	15	27	30	32	36	32
114	29	36	31	30	28	17	8	4	3	3	8	15	28	30	32	36	29
115	27	36	30	31	28	17	8	4	3	3	8	15	27	30	31	35	27
116	26	35	30	30	28	17	8	4	3	4	8	15	28	31	31	34	26
117	26	34	30	30	28	18	7	4	4	4	8	16	27	30	30	33	26
118	26	34	29	30	29	17	8	4	3	4	8	15	28	31	28	32	26
119	26	33	27	30	28	17	8	4	3	4	8	15	29	30	27	31	26
120	25	32	26	30	28	18	8	4	4	4	8	15	28	30	26	30	25
121	25	30	25	30	29	17	9	3	3	4	8	15	28	30	25	29	25
122	24	28	24	29	29	17	8	4	3	4	8	15	28	29	24	27	24
123	22	27	23	29	30	17	8	5	3	4	8	15	28	28	23	25	22
124	21	24	22	28	27	17	8	4	4	5	8	15	26	27	21	22	21
125	19	23	21	28	24	16	8	4	3	5	8	15	24	26	21	21	19
126	18	21	21	27	21	16	8	4	4	4	8	15	21	25	20	19	18
127	17	20	20	26	19	16	9	4	3	4	8	15	20	24	19	18	17
128	15	18	19	26	17	16	8	3	4	5	8	15	19	24	18	16	15
129	14	17	18	24	16	16	8	4	3	5	9	15	16	23	18	15	14
130	13	16	18	24	14	15	9	5	4	5	8	14	13	23	17	13	13
131	12	15	18	24	11	15	8	4	4	4	9	14	11	23	17	12	12
132	11	13	18	23	6	15	8	5	4	5	8	14	6	23	16	10	11
133	10	12	17	23	3	15	9	5	5	5	8	14	4	23	16	8	10
134	9	10	17	23	3	14	9	5	3	5	9	14	4	23	15	8	9
135	8	9	17	24	3	15	9	5	4	5	9	14	4	23	15	6	8
136	7	8	17	23	3	15	9	4	2	5	9	14	3	24	15	5	7
137	5	6	17	24	3	16	9	5	5	5	9	15	4	24	15	4	5
138	5	6	17	24	3	16	9	5	5	5	9	15	3	24	15	3	5
139	3	5	18	24	3	16	9	5	4	5	9	15	3	25	15	3	3
140	2	6	18	25	3	16	9	6	4	5	9	16	3	25	15	3	2
141	2	6	18	26	3	16	9	5	5	5	9	16	3	26	15	2	2
142	2	7	18	26	3	17	9	4	5	5	9	16	2	25	14	3	2
143	2	7	18	26	3	18	9	5	5	5	8	16	3	26	14	2	2
144	2	7	18	26	3	18	9	5	4	5	9	17	3	26	14	2	2

145	1	7	17	26	3	18	9	5	5	6	9	17	3	26	13	2	1
146	2	8	17	26	3	19	9	6	5	6	8	17	4	26	13	2	2
147	1	8	17	26	3	19	9	6	6	4	8	18	4	26	12	2	1
148	2	8	17	26	2	19	9	6	6	6	8	18	4	25	11	2	2
149	2	8	17	25	3	19	9	6	5	6	8	18	4	25	11	2	2
150	2	8	17	24	3	18	9	6	5	6	9	18	4	25	10	2	2
151	2	8	17	24	4	18	8	6	5	6	8	18	4	24	9	3	2
152	2	7	16	23	3	18	9	6	5	6	9	18	5	23	8	2	2
153	2	8	15	22	3	17	8	6	6	6	8	18	5	22	7	2	2
154	2	8	15	21	3	16	8	6	6	6	9	17	6	20	7	2	2
155	2	6	14	20	3	16	8	6	5	6	9	16	6	19	6	3	2
156	3	8	14	19	4	15	8	6	5	6	8	15	7	18	6	3	3
157	2	7	13	18	4	14	8	6	6	6	8	15	7	17	6	3	2
158	3	7	13	16	4	13	8	6	6	6	8	13	7	15	6	2	3
159	3	7	12	15	3	12	8	6	5	6	8	13	7	14	6	3	3
160	3	7	12	14	4	13	8	6	6	6	8	13	7	12	5	4	3
161	3	7	12	13	4	12	8	6	6	5	8	12	7	11	5	3	3
162	4	6	11	12	4	11	8	6	5	6	8	12	7	11	5	4	4
163	3	6	11	11	4	11	7	6	5	6	8	11	7	10	4	3	3
164	3	6	10	10	4	10	7	6	6	6	8	11	7	9	5	4	3
165	4	6	10	9	4	9	6	6	5	6	7	10	7	9	5	3	4
166	4	6	9	8	4	9	7	5	4	5	7	9	6	8	5	4	4
167	4	6	8	7	4	7	6	5	5	6	7	9	6	7	4	4	4
168	4	6	7	7	4	7	7	6	5	6	6	8	6	7	5	3	4
169	2	6	7	6	3	6	6	6	6	6	7	8	5	6	5	4	2
170	4	6	6	6	4	5	5	6	6	5	6	7	5	5	5	4	4
171	4	5	6	5	4	5	6	5	6	5	6	6	4	4	4	4	4
172	4	4	5	4	4	5	5	5	5	4	6	6	4	5	4	4	4
173	4	5	5	4	4	5	5	5	5	5	5	5	3	5	4	4	4
174	4	4	5	5	4	5	4	5	5	5	5	4	4	4	4	4	4
175	4	4	5	5	4	4	4	5	5	4	5	4	4	4	4	3	4
176	4	4	4	4	4	4	4	5	5	5	5	5	3	4	4	4	4
177	4	4	5	4	4	4	4	5	5	5	4	5	4	4	4	4	4
178	4	4	4	4	4	4	4	5	5	4	4	4	4	4	4	4	4
179	4	4	3	4	4	4	4	4	5	4	4	3	4	4	4	4	4
180	4	4	4	4	5	4	3	4	4	4	4	4	4	3	4	4	4

Luminaire Report Summary

IESNA:LM-63-2002
[TEST] UTC2308054E-A
[TESTLAB] UTEST TECHNICAL LABORATORY CO.LTD
[ISSUE DATE] 2023/8/30
[MANUFAC] SARIN Energy Solutions
[_TOTALLUMINAIRELUMENS] 3571
[_VOLTAGE] 120.0 V
[_CURRENT] 0.247 A
[_POWERFACTOR] 0.990
[_THD] 12.68
[_TESTINST] GPM-3000
[_TESTDIST] 14.140 M [K=1.0000]
[_TESTTEMPERATURE] 25.0 'C
[_TESTHUMIDITY]
[_TESTOPERATOR]
FILE: CANDELA MULTIPLIER: 1
FILE: VERTICAL ANGLES: 181, HORIZONTAL ANGLES: 17
FILE: COORDINATE SYSTEM: TYPE C
FILE: UNIT OF MEASURE: METRIC
FILE: BALLAST FACTOR: 1

Photometrics Pro 1.3.29 copyright 2003-2024 by jSolutions, Inc.
Reported data calculated from manufacturer's data file, based on IES recommended methods.