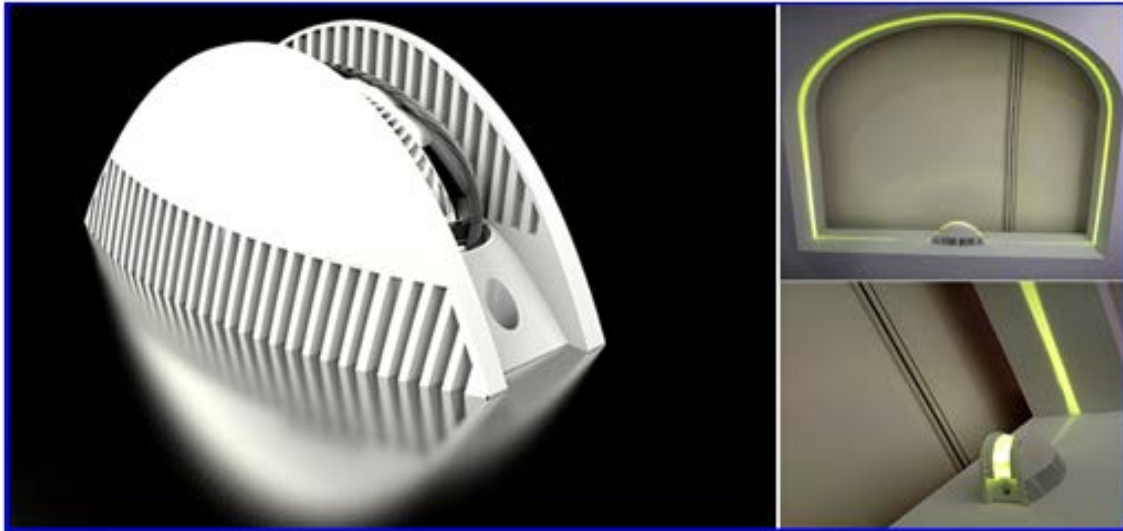


LED Window Light SERIES

- SES-WIN-8W-RGB
- SES-WIN-8W-5000
- SES-WIN-8W-B
- SES-WIN-8W-R



Technical Specifications

Watts:	8W
Luminous Flux:	430 LM
CCT:	RGB, 5000k, Blue, Red
Voltage:	AC110-240V
CRI:	>80Ra
Beam Angled:	360°
PF:	0.95
IP:	IP66
Lifespan:	30,000 hours

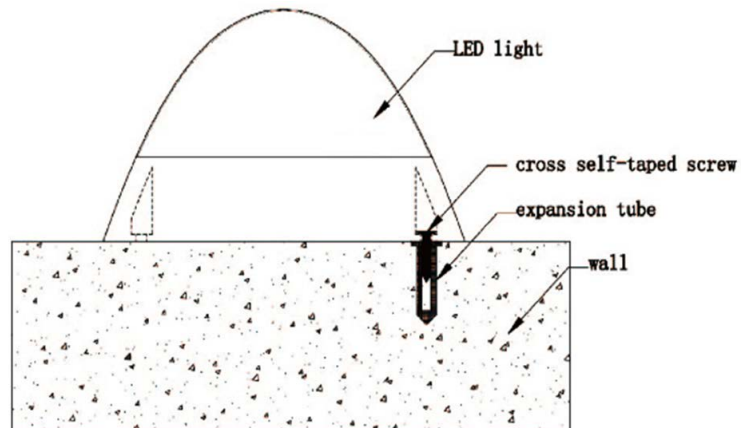
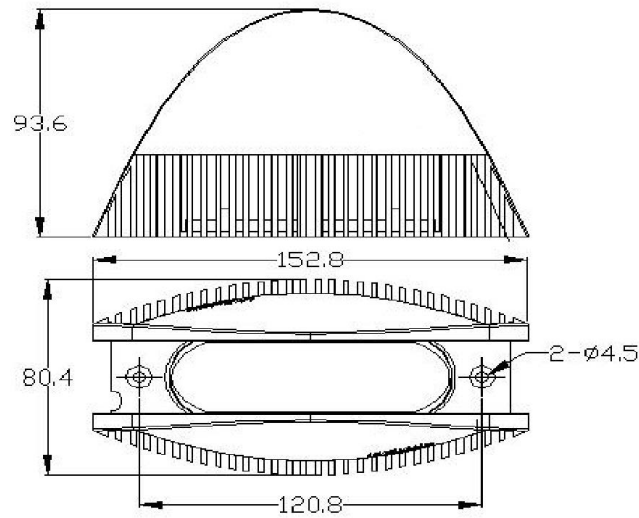


Application

SARIN Energy is proud of its new high power LED Window Light series which is a revolutionary product that adopts the high quality LEDs to directly replace traditional, apply to hotels, buildings, home, park, railway stations; Advertising lighting, etc.

CE RoHS

Dimensional Diagrams(mm)



installation instruction

Model Numbers

8W RGB
SES-WIN-8W=RGB

8W5000k
SES-WIN-8W-5000

8W Blue
SES-WIN-8W-B

8W Red
SES-WIN-8W-R