

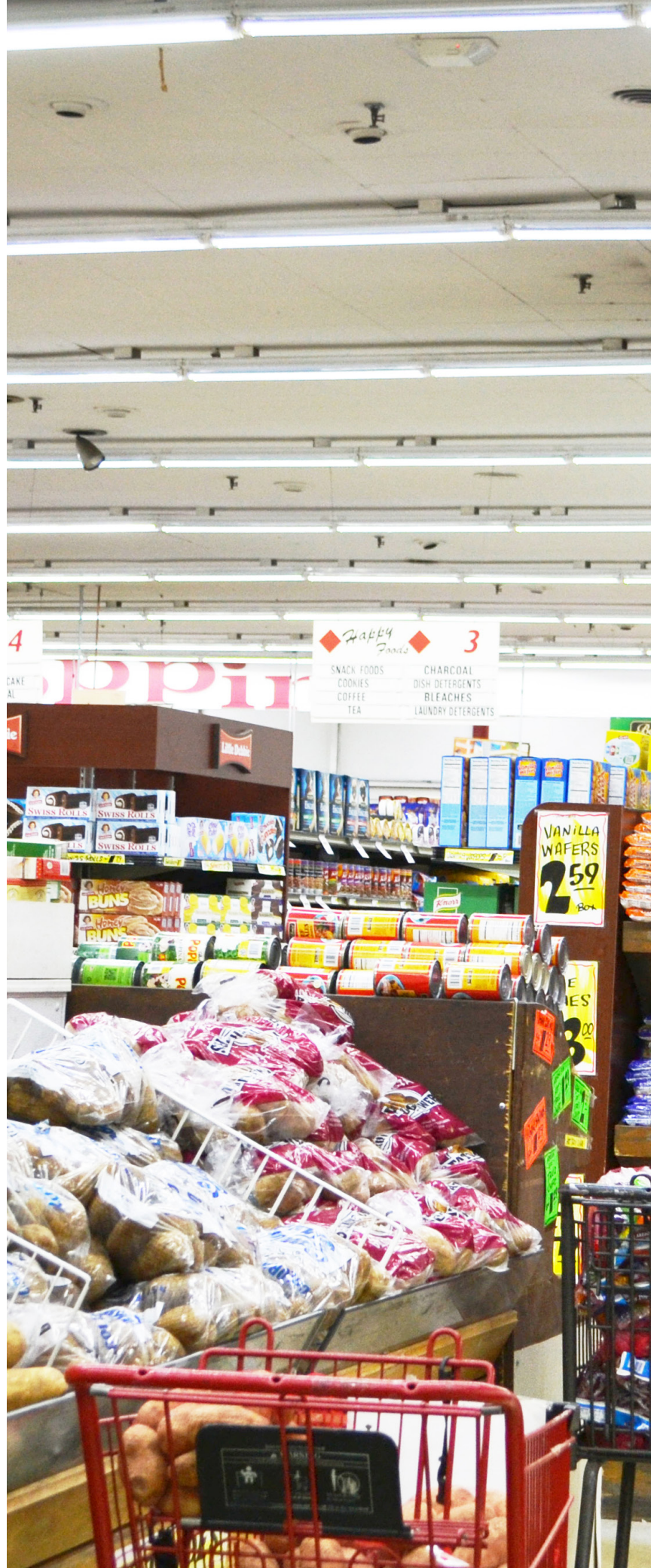
LED EMERGENCY DRIVER SERIES

SES-EH25170



Technical Specifications

Size:	15" L x 3" W x 3" H
Max Watts:	25W
Compatible With:	Up to 125W
Compatibility:	Any AC120V LED Light with Internal Driver <small>(Must be tested, does not work with on-board drivers)</small>
Driver Output:	5A AC120V
Voltage:	AC100-277V
Power Time:	>90 Minutes
Recharge Time:	48 Hours
Battery:	Ni-Cd
IP Rating:	IP42
Included:	Test Switch, Charge Indicator
Operating Temp:	32°F - 122°F
Life Expectancy:	7-10 Years



Features

In the event of a power failure, this driver activates emergency mode and operates the existing fixture for at least 90 minutes. The unit contains a battery, charger, and converter circuit in a single enclosure. This is for use with switched or non-switched fixtures and includes a test switch and charge indicator kit.



Dimensions



Model Numbers

#10905 SES-EH25170