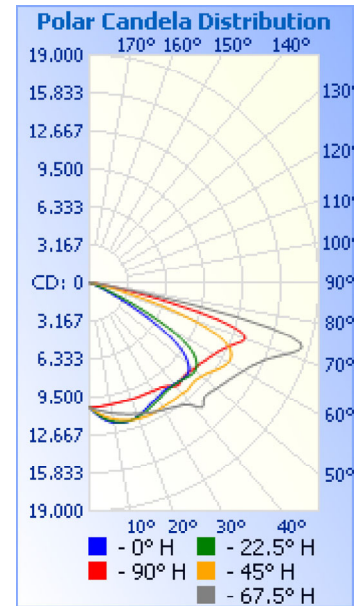


Photometrics Pro

Luminaire Photometric Report

Filename: Shoebox SBN 300W - 120V
Manufacturer: SARIN Energy Inc.
Luminaire: SES-SBN-3000-300 120V
Lamp Output: Total luminaire Lumens: 39384
Max Candela: 18,381.6 at Horizontal: 67.5°, Vertical: 73°
Input Wattage: 307.9
Luminous Opening: Point
Test Date: 2016-10-09
Test Lab: Standard-Tech Co. Ltd
Photometry : Type C
Nema Type: 7 X 7



Roadway Summary

Cutoff Classification:	CUTOFF
Distribution:	TYPE III, MEDIUM
Max Cd, 90 Deg Vert:	15.0
Max Cd, 80 to <90 Deg:	2,304.6
	Lumens % Lamp
Downward Street Side:	26,494.4 67.3%
Downward House Side:	12,801.1 32.5%
Downward Total:	39,295.5 99.8%
Upward Street Side:	33.6 0.1%
Upward House Side:	57.7 0.1%
Upward Total:	91.2 0.2%
Total Lumens:	39,386.7 100%

Flood Summary

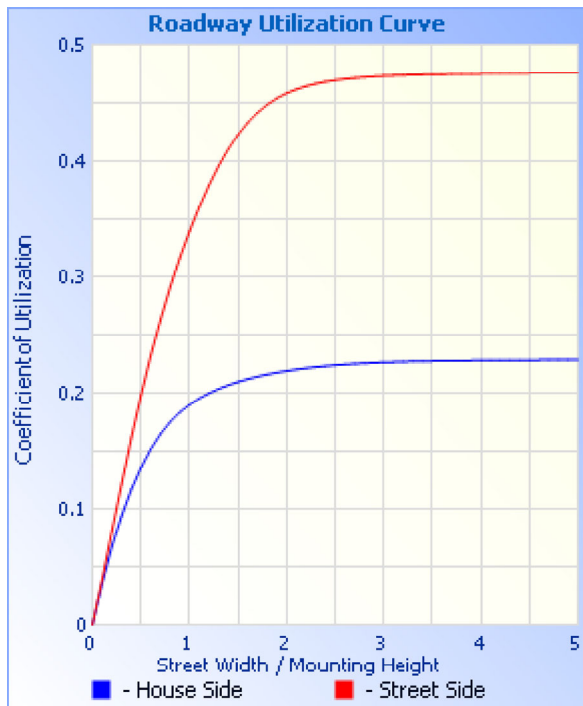
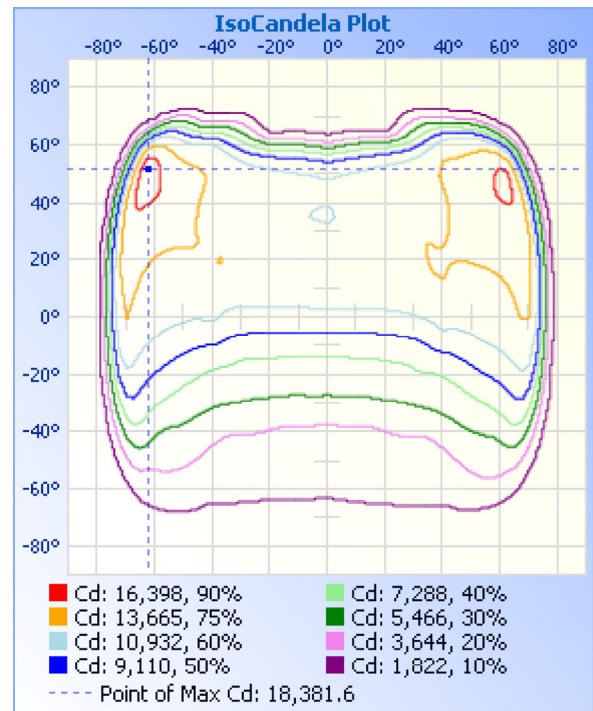
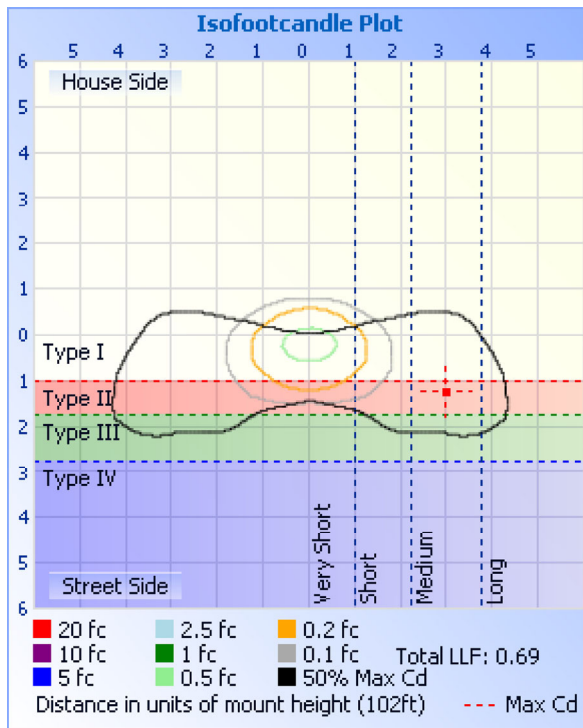
	Efficiency	Lumens	Horizontal Spread	Vertical Spread
Field (10%):	97.6%	38,420.1	146.4	134.3
Beam (50%):	70.2%	27,661.2	135.8	83.8
Total:	100%	39,371.0		

Zonal Lumen Summary

Zone	Lumens	% Luminaire
0-30	8,122.2	20.6%
0-40	13,797.5	35%
0-60	28,070.3	71.3%
60-90	11,222.5	28.5%
70-100	4,240.5	10.8%
90-120	36.6	0.1%
0-90	39,292.8	99.8%
90-180	91.2	0.2%
0-180	39,384.0	100%

Lumens Per Zone

Zone	Lumens	% Total	Zone	Lumens	% Total
0-10	975.3	2.5%	90-100	8.4	0%
10-20	2,792.8	7.1%	100-110	12.6	0%
20-30	4,354.1	11.1%	110-120	15.6	0%
30-40	5,675.3	14.4%	120-130	15.6	0%
40-50	6,787.3	17.2%	130-140	13.5	0%
50-60	7,485.6	19.0%	140-150	10.5	0%
60-70	6,990.3	17.7%	150-160	8.0	0%
70-80	4,018.4	10.2%	160-170	5.0	0%
80-90	213.7	0.5%	170-180	2.1	0%



Illuminance at a Distance

	Center Beam fc	Beam Width	
16.7ft	37.1 fc	30.0 ft	82.2 ft
33.3ft	9.32 fc	59.8 ft	164.0 ft
50.0ft	4.14 fc	89.7 ft	246.3 ft
66.7ft	2.32 fc	119.7 ft	328.5 ft
83.3ft	1.49 fc	149.5 ft	410.3 ft
100.0ft	1.03 fc	179.5 ft	492.5 ft

■ Vert. Spread: 83.8°
 ■ Horiz. Spread: 135.8°

Coefficients Of Utilization - Zonal Cavity Method

Effective Floor Cavity Reflectance: 20%

RCC %:	80				70				50			30			10			0
RW %:	70	50	30	0	70	50	30	0	50	30	20	50	30	20	50	30	20	0
RCR: 0	1.19	1.19	1.19	1.19	1.16	1.16	1.16	1.00	1.11	1.11	1.11	1.06	1.06	1.06	1.02	1.02	1.02	1.00
1	1.08	1.03	.98	.94	1.05	1.00	.96	.83	.96	.93	.89	.92	.89	.87	.88	.86	.84	.82
2	.97	.88	.80	.74	.94	.86	.79	.67	.82	.76	.71	.79	.74	.70	.76	.72	.68	.66
3	.87	.76	.67	.60	.85	.74	.66	.55	.71	.64	.58	.68	.62	.57	.65	.60	.56	.53

4	.79	.66	.56	.49	.77	.65	.56	.46	.62	.54	.48	.59	.53	.47	.57	.51	.47	.44
5	.72	.58	.48	.41	.70	.57	.48	.39	.55	.47	.41	.53	.46	.40	.51	.45	.40	.37
6	.66	.52	.42	.35	.64	.51	.42	.34	.49	.41	.35	.47	.40	.34	.46	.39	.34	.32
7	.61	.47	.37	.31	.59	.46	.37	.30	.44	.36	.30	.43	.35	.30	.41	.35	.30	.28
8	.57	.42	.33	.27	.55	.42	.33	.26	.40	.32	.27	.39	.32	.26	.38	.31	.26	.24
9	.53	.39	.30	.24	.51	.38	.30	.23	.37	.29	.24	.36	.29	.24	.35	.28	.23	.22
10	.49	.35	.27	.22	.48	.35	.27	.21	.34	.26	.21	.33	.26	.21	.32	.26	.21	.19

Candela Table - Type C

	0	22.5	45	67.5	90	112.5	135	157.5	180	202.5	225	247.5	270	292.5	315	337.5	360
0	10339	10339	10339	10339	10339	10339	10339	10339	10339	10339	10339	10339	10339	10339	10339	10339	10339
1	10547	10526	10484	10413	10341	10260	10191	10137	10125	10141	10188	10258	10341	10419	10490	10534	10547
2	10744	10700	10624	10491	10347	10177	10027	9930	9894	9934	10031	10176	10344	10496	10632	10716	10744
3	10931	10866	10757	10565	10346	10093	9870	9719	9667	9722	9873	10094	10349	10572	10770	10889	10931
4	11105	11027	10882	10631	10342	10006	9710	9507	9427	9506	9708	10010	10355	10649	10901	11047	11105
5	11261	11173	11000	10693	10332	9919	9541	9291	9188	9284	9537	9916	10361	10723	11026	11193	11261
6	11406	11303	11113	10754	10316	9826	9369	9069	8952	9062	9372	9825	10366	10795	11147	11330	11406
7	11528	11418	11216	10818	10295	9726	9194	8843	8714	8840	9205	9734	10370	10865	11259	11453	11528
8	11638	11526	11312	10885	10280	9625	9023	8622	8477	8620	9033	9640	10375	10931	11364	11563	11638
9	11733	11627	11403	10948	10268	9519	8847	8409	8247	8396	8862	9549	10379	11006	11467	11661	11733
10	11808	11711	11484	11006	10256	9410	8673	8196	8017	8179	8695	9457	10384	11082	11563	11749	11808
11	11869	11780	11559	11065	10244	9305	8496	7982	7790	7971	8524	9365	10387	11158	11649	11822	11869
12	11915	11839	11625	11122	10236	9203	8318	7772	7577	7767	8355	9276	10389	11230	11728	11886	11915
13	11950	11883	11691	11178	10235	9101	8142	7568	7379	7575	8192	9185	10396	11301	11802	11941	11950
14	11957	11913	11754	11233	10236	8989	7972	7375	7196	7393	8025	9089	10403	11369	11873	11985	11957
15	11960	11932	11819	11296	10237	8881	7809	7200	7028	7217	7869	8990	10413	11441	11937	12012	11960
16	11958	11937	11867	11358	10239	8782	7647	7034	6865	7052	7713	8889	10425	11516	11993	12024	11958
17	11938	11930	11910	11418	10240	8685	7488	6874	6705	6897	7567	8795	10441	11591	12045	12026	11938
18	11908	11911	11950	11471	10247	8583	7343	6726	6560	6749	7427	8712	10455	11664	12099	12021	11908
19	11852	11876	11979	11540	10264	8485	7207	6592	6428	6612	7291	8632	10471	11729	12145	12002	11852
20	11780	11837	12000	11600	10278	8391	7081	6465	6299	6486	7162	8544	10489	11786	12186	11972	11780
21	11700	11795	12023	11651	10282	8289	6955	6341	6181	6364	7042	8457	10504	11846	12212	11921	11700
22	11623	11744	12037	11703	10292	8190	6838	6224	6063	6250	6926	8377	10527	11915	12224	11873	11623
23	11555	11696	12050	11771	10296	8101	6720	6114	5946	6147	6810	8285	10557	11997	12232	11834	11555
24	11480	11660	12065	11834	10297	8011	6608	6003	5831	6041	6704	8207	10586	12079	12252	11787	11480
25	11394	11589	12076	11893	10302	7923	6503	5887	5707	5933	6612	8133	10610	12166	12265	11729	11394
26	11311	11523	12068	11960	10312	7838	6404	5772	5579	5814	6525	8060	10639	12251	12267	11672	11311
27	11240	11463	12044	12029	10325	7755	6309	5659	5445	5702	6437	7990	10675	12332	12267	11613	11240
28	11195	11398	12014	12094	10341	7677	6226	5538	5306	5588	6351	7922	10707	12417	12267	11560	11195
29	11151	11344	11996	12160	10358	7600	6142	5411	5153	5463	6270	7856	10748	12500	12262	11528	11151
30	11101	11293	11989	12217	10376	7520	6052	5277	4986	5336	6193	7795	10791	12572	12261	11494	11101
31	11033	11239	11982	12274	10411	7448	5974	5133	4806	5193	6120	7743	10851	12653	12272	11459	11033
32	10964	11165	11975	12329	10448	7391	5902	4985	4622	5047	6065	7699	10914	12740	12287	11411	10964
33	10919	11104	11970	12396	10474	7346	5848	4823	4423	4893	6016	7693	10973	12831	12303	11360	10919
34	10877	11065	11970	12473	10503	7335	5776	4659	4219	4720	5963	7716	11048	12910	12336	11324	10877
35	10857	11024	11980	12558	10553	7366	5673	4481	4008	4546	5852	7749	11139	12992	12375	11311	10857
36	10857	10992	11979	12645	10621	7337	5564	4299	3805	4361	5740	7729	11251	13101	12414	11286	10857
37	10880	10977	11970	12733	10729	7274	5462	4107	3602	4169	5633	7699	11382	13224	12438	11255	10880
38	10910	10975	11951	12850	10876	7222	5360	3915	3413	3979	5528	7650	11586	13368	12462	11228	10910
39	10929	10984	11936	13042	11027	7144	5251	3724	3258	3789	5422	7564	11801	13614	12502	11210	10929
40	10945	10988	11953	13314	11162	7059	5131	3542	3103	3608	5302	7478	11959	14016	12578	11208	10945
41	10979	11009	12010	13684	11239	6994	5011	3375	2949	3440	5178	7408	11984	14399	12655	11223	10979
42	11025	11045	12048	13949	11203	6923	4881	3230	2831	3300	5047	7346	11870	14614	12678	11242	11025
43	11063	11080	12022	13864	11081	6865	4746	3086	2732	3161	4912	7308	11743	14354	12625	11271	11063
44	11100	11133	11964	13588	11021	6822	4603	2941	2638	3021	4766	7265	11710	14053	12546	11308	11100
45	11121	11187	11944	13443	11008	6781	4443	2835	2556	2916	4612	7241	11728	13946	12470	11362	11121
46	11131	11248	11928	13435	11013	6738	4289	2743	2482	2824	4447	7221	11768	13952	12432	11422	11131

47	11106	11314	11924	13470	11040	6698	4127	2659	2417	2738	4273	7208	11805	13961	12434	11493	11106
48	11042	11368	11966	13527	11082	6663	3965	2587	2359	2661	4100	7187	11850	14017	12461	11551	11042
49	10919	11396	12026	13586	11134	6624	3802	2520	2307	2587	3931	7162	11910	14081	12506	11585	10919
50	10729	11393	12102	13666	11186	6587	3641	2456	2268	2519	3762	7130	11983	14160	12559	11592	10729
51	10487	11349	12186	13741	11234	6556	3496	2395	2241	2454	3600	7104	12050	14226	12619	11572	10487
52	10177	11272	12278	13821	11278	6516	3357	2336	2232	2392	3446	7067	12128	14306	12700	11507	10177
53	9817	11131	12398	13898	11331	6467	3234	2282	2232	2340	3320	7031	12219	14383	12803	11393	9817
54	9361	10918	12536	13990	11397	6423	3111	2230	2223	2285	3195	6988	12299	14486	12910	11217	9361
55	8802	10656	12675	14072	11466	6374	2988	2185	2196	2241	3070	6936	12364	14584	13033	10979	8802
56	8146	10309	12819	14168	11553	6314	2887	2139	2151	2198	2966	6871	12439	14680	13150	10691	8146
57	7388	9862	12949	14285	11631	6258	2802	2100	2098	2163	2872	6780	12511	14765	13279	10328	7388
58	6513	9288	13074	14402	11714	6187	2725	2064	2047	2131	2777	6680	12592	14863	13395	9838	6513
59	5571	8602	13176	14524	11810	6094	2647	2029	1996	2101	2697	6552	12670	14961	13504	9225	5571
60	4651	7780	13252	14666	11911	5988	2580	1999	1950	2074	2624	6430	12745	15054	13597	8506	4651
61	3787	6857	13289	14820	12026	5876	2516	1966	1905	2043	2551	6288	12820	15170	13663	7652	3787
62	3018	5870	13266	14963	12145	5745	2452	1933	1860	2021	2482	6153	12933	15296	13689	6646	3018
63	2344	4820	13190	15140	12290	5594	2388	1898	1810	1993	2416	6010	13069	15441	13690	5533	2344
64	1758	3816	13037	15360	12448	5444	2326	1862	1754	1962	2350	5864	13208	15617	13590	4430	1758
65	1421	2883	12800	15586	12631	5289	2261	1818	1689	1923	2290	5706	13360	15805	13436	3371	1421
66	1087	2059	12416	15817	12837	5129	2197	1765	1608	1867	2237	5545	13539	16045	13172	2424	1087
67	753	1602	11906	16136	13048	4970	2135	1700	1512	1796	2190	5392	13702	16322	12807	1646	753
68	659	1157	11215	16495	13313	4790	2072	1620	1398	1696	2149	5204	13830	16627	12324	1224	659
69	605	711	10338	16902	13550	4599	2011	1521	1268	1573	2105	4999	13854	16959	11678	805	605
70	561	596	9274	17350	13690	4397	1949	1403	1066	1425	2052	4794	13628	17242	10861	645	561
71	521	539	8047	17815	13594	4184	1876	1264	741	1251	1973	4560	13018	17485	9844	573	521
72	484	489	6694	18194	13167	3967	1784	1112	573	1068	1863	4302	11940	17399	8641	515	484
73	445	448	5308	18382	12329	3760	1673	951	494	879	1710	4034	10374	16772	7250	470	445
74	414	413	3987	18169	11025	3544	1536	785	423	690	1517	3714	8479	15377	5722	431	414
75	392	381	2888	17215	9247	3275	1372	575	391	491	1286	3273	6450	13111	4233	394	392
76	366	353	2058	15350	7236	3005	1186	394	368	346	1039	2832	4553	10218	2958	362	366
77	333	323	1626	12390	5519	2735	984	282	348	267	806	2390	2945	7003	2000	330	333
78	301	299	1207	8671	3802	2345	740	230	328	227	544	1870	1822	4202	1531	301	301
79	269	279	787	5007	2089	1936	370	199	307	199	309	1382	1355	2184	1073	280	269
80	238	256	585	2305	1175	1522	216	175	274	177	220	966	888	1578	616	256	238
81	207	227	456	1624	639	1150	184	154	219	156	189	670	420	992	455	227	207
82	177	190	366	1004	375	852	157	137	175	139	163	466	282	407	360	192	177
83	149	156	297	385	247	598	133	122	147	124	137	328	205	316	294	161	149
84	122	129	237	305	174	250	110	108	127	110	115	164	157	263	236	132	122
85	99	108	188	246	128	110	88	94	110	96	93	108	120	213	185	111	99
86	75	91	141	198	100	82	68	80	87	82	72	84	92	163	139	92	75
87	48	63	106	152	74	62	49	62	62	64	52	61	61	117	105	60	48
88	23	36	65	83	40	33	27	36	38	40	28	33	29	55	54	30	23
89	2	4	16	22	13	11	5	4	4	5	6	14	13	17	12	3	2
90	1	1	6	15	13	11	5	1	1	1	6	15	13	13	8	2	1
91	1	1	5	13	13	12	5	1	1	1	6	16	13	12	6	1	1
92	1	1	4	12	13	13	6	1	0	1	7	17	14	11	6	1	1
93	1	1	4	11	13	14	6	1	0	1	7	18	14	10	5	1	1
94	1	1	4	10	13	15	7	1	0	1	8	20	16	9	5	1	1
95	1	1	4	10	14	16	8	1	0	1	9	21	17	9	4	1	1

96	1	1	4	10	15	18	9	1	0	1	10	22	18	8	4	1	1
97	1	1	4	10	16	19	11	1	1	2	11	24	19	9	4	1	1
98	1	2	4	10	17	21	12	2	1	2	12	25	20	8	4	1	1
99	1	2	4	10	18	21	13	2	1	2	13	25	21	8	4	2	1
100	1	2	4	10	19	22	14	3	1	3	14	26	21	9	4	2	1
101	2	2	4	10	19	23	15	3	2	4	15	26	22	9	4	2	2
102	2	2	4	10	20	23	15	4	2	5	16	26	23	9	4	2	2
103	2	3	4	11	21	24	16	5	3	5	17	27	23	10	4	2	2
104	2	3	4	12	22	24	16	6	3	6	18	27	24	10	4	2	2
105	2	3	5	12	23	24	17	7	4	7	19	26	25	11	4	2	2
106	2	3	5	12	23	24	18	7	5	8	20	27	25	12	4	3	2
107	3	3	5	13	24	24	18	8	5	9	20	27	26	12	4	3	3
108	3	3	5	14	24	24	19	9	6	10	20	28	26	13	5	3	3
109	3	4	5	14	25	25	19	10	6	11	21	29	27	13	5	3	3
110	3	4	6	15	25	26	19	11	7	11	21	31	27	14	5	3	3
111	3	4	6	15	26	27	19	11	8	12	21	32	28	14	5	3	3
112	4	4	6	16	26	28	20	12	8	13	21	33	28	15	5	3	4
113	4	4	7	16	26	29	20	13	9	14	21	33	28	15	6	4	4
114	4	4	7	16	26	30	20	13	10	14	22	33	28	15	6	4	4
115	4	4	7	16	26	30	20	13	11	13	22	33	28	15	6	4	4
116	4	4	8	17	26	30	20	12	11	13	23	33	29	15	7	4	4
117	4	4	8	17	26	30	21	12	12	12	23	32	29	15	7	4	4
118	4	4	8	17	26	30	22	12	12	13	24	32	29	15	7	4	4
119	4	4	9	17	26	30	23	14	12	14	25	32	29	16	7	4	4
120	4	5	9	17	25	30	23	16	12	16	25	31	29	16	8	5	4
121	5	6	9	17	25	30	23	16	14	16	25	30	30	16	8	6	5
122	6	6	9	17	25	30	23	16	16	16	24	29	29	16	8	6	6
123	7	7	9	18	24	30	22	15	17	16	24	28	29	16	8	6	7
124	7	7	9	18	24	29	21	16	17	16	24	28	28	16	8	6	7
125	8	8	9	18	23	27	21	17	17	17	24	28	27	16	8	7	8
126	8	8	10	18	23	26	20	18	17	18	24	28	27	16	8	7	8
127	9	8	10	18	23	26	20	20	17	20	24	28	27	17	8	7	9
128	9	8	10	18	23	25	20	22	18	21	24	27	27	17	8	8	9
129	9	8	10	18	23	24	20	23	19	23	25	26	26	16	8	8	9
130	9	8	10	17	23	23	20	24	21	24	25	25	25	16	8	8	9
131	10	9	10	16	22	22	20	24	22	24	25	25	24	15	8	8	10
132	10	9	10	16	22	22	20	25	22	25	24	24	23	15	8	8	10
133	10	9	10	15	22	21	19	25	22	25	24	24	23	15	8	8	10
134	10	10	10	15	21	21	19	25	23	25	24	24	22	14	8	9	10
135	10	10	10	15	21	20	19	25	23	25	23	24	22	14	8	9	10
136	11	10	10	15	21	20	19	25	23	25	22	24	21	14	8	9	11
137	11	10	10	16	21	20	18	25	22	24	21	24	21	14	8	9	11
138	11	10	10	16	20	21	17	25	21	24	20	24	21	14	8	10	11
139	11	10	10	16	20	21	16	25	21	24	19	25	21	14	8	10	11
140	11	10	10	16	20	21	16	25	20	23	19	25	21	14	8	10	11
141	11	11	9	16	20	21	16	24	19	23	19	25	21	14	8	10	11
142	11	11	9	15	20	20	16	24	19	23	19	25	21	14	8	10	11
143	11	11	9	15	20	20	16	23	19	22	19	25	20	13	8	10	11
144	10	11	9	15	20	20	16	23	18	22	20	25	20	13	9	11	10

145	10	12	9	15	20	20	16	23	18	22	21	24	20	13	9	11	10
146	11	12	10	15	20	20	17	23	19	22	21	24	19	13	10	11	11
147	12	12	10	15	19	20	18	23	20	22	22	24	19	13	10	11	12
148	12	12	11	15	19	20	18	23	20	22	24	23	19	13	11	12	12
149	12	13	11	15	19	20	19	23	21	21	25	23	19	13	11	12	12
150	12	13	12	15	19	19	19	23	21	21	26	22	19	13	12	12	12
151	13	13	13	15	19	19	20	23	20	20	26	22	18	13	13	12	13
152	13	13	14	15	18	19	20	23	20	20	26	21	18	13	13	13	13
153	13	14	14	15	18	19	20	22	20	20	26	21	18	13	14	13	13
154	14	14	14	15	17	19	19	22	19	20	25	21	17	13	14	14	14
155	14	14	14	16	17	19	19	21	18	19	25	21	17	13	14	14	14
156	14	14	15	16	17	19	18	21	18	19	24	21	16	14	15	14	14
157	14	14	15	16	16	19	18	21	19	19	23	21	16	14	15	14	14
158	14	15	15	16	16	19	18	21	19	19	23	21	15	14	15	14	14
159	14	15	15	16	17	18	18	20	19	18	22	21	15	14	15	15	14
160	15	15	15	16	17	18	17	20	19	18	21	21	16	14	15	15	15
161	15	15	15	16	17	17	17	20	19	18	21	21	16	14	16	15	15
162	15	15	16	15	18	17	16	19	19	18	20	21	17	14	16	15	15
163	15	16	16	15	18	16	16	19	19	18	20	22	17	14	16	16	15
164	16	16	16	15	18	16	16	19	19	18	19	22	17	15	17	16	16
165	16	16	16	15	18	17	16	19	19	17	19	23	16	15	17	16	16
166	16	16	16	15	18	17	17	19	19	17	19	23	17	15	17	15	16
167	16	16	17	15	18	18	17	20	19	18	20	24	17	16	17	15	16
168	16	17	18	16	19	19	18	22	23	21	23	25	18	17	18	16	16
169	16	18	19	17	19	19	19	23	24	23	24	27	18	17	19	17	16
170	17	19	20	17	20	20	20	24	26	24	25	27	18	18	20	18	17
171	18	20	21	18	21	21	21	24	26	25	25	27	19	19	20	19	18
172	20	20	21	18	21	21	22	24	25	25	25	27	19	19	21	19	20
173	21	20	21	18	21	22	22	23	25	24	24	26	20	19	21	20	21
174	21	20	21	18	22	22	22	23	24	24	24	26	20	20	21	20	21
175	21	20	22	19	21	22	22	23	24	24	23	26	20	21	22	20	21
176	22	20	22	19	21	21	22	22	23	24	23	26	20	21	22	20	22
177	22	20	22	19	21	21	22	22	22	23	22	25	20	21	22	20	22
178	22	20	22	19	20	20	21	21	22	22	21	24	20	21	21	20	22
179	22	20	23	19	19	19	20	21	21	22	20	23	20	21	21	20	22
180	21	21	21	21	21	21	21	21	21	21	21	21	21	21	21	21	21

Luminaire Report Summary

IESNA:LM-63-2002
[TEST]
[TESTDATE] 2016-10-09
[TESTLAB] Standard-Tech Co. Ltd
[ISSUEDATE] 2016-10-09 15:09:47
[MANUFAC] SARIN Energy Inc.
[LUMINAIRE] SES-SBN-3000-300 120V
[_LAMPPOSITION] 0,0
[_TOTALLUMINAIRELUMENS] 39384
[OTHER] EVERFINE GO-R5000_V2 SYSTEMGamma(deg) Fz(lm) Ft(lm) %Lum %Lamp0- 10 975.39
975.39 2.48 2.4810- 20 2792.85 3768.24 9.57 9.5720- 30 4354.21 8122.44 20.62
20.6230- 40 5676.38 13798.82 35.03 35.0340- 50 6788.98 20587.80 52.27 52.2750- 60
7487.70 28075.50 71.27 71.2760- 70 6991.52 35067.02 89.02 89.0270- 80 4018.45
39085.47 99.23 99.2380- 90 213.71 39299.18 99.77 99.7790-100 8.38 39307.56 99.79
99.79100-110 12.58 39320.15 99.82 99.82110-120 15.62 39335.76 99.86 99.86120-130
15.62 39351.39 99.90 99.90130-140 13.49 39364.87 99.94 99.94140-150 10.53 39375.40
99.96 99.96150-160 7.98 39383.38 99.98 99.98160-170 5.00 39388.38 99.99 99.99170-
180 2.06 39390.43 100.00 100.00

FILE: CREATED USING ABSOLUTE PHOTOMETRY
FILE: CANDELA MULTIPLIER: 1
FILE: VERTICAL ANGLES: 181, HORIZONTAL ANGLES: 17
FILE: COORDINATE SYSTEM: TYPE C
FILE: UNIT OF MEASURE: METRIC
FILE: BALLAST FACTOR: 1

Photometrics Pro 1.3.29 copyright 2003-2019 by jSolutions, Inc.
Reported data calculated from manufacturer's data file, based on IES recommended methods.