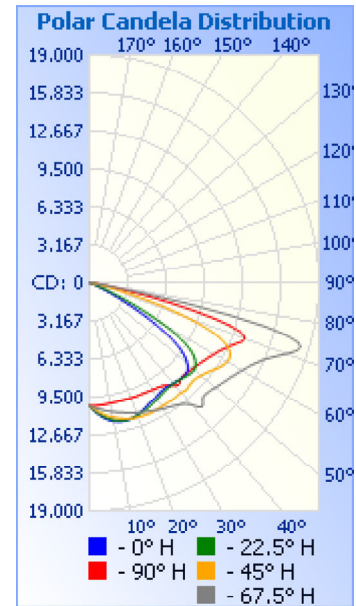


Photometrics Pro

Luminaire Photometric Report

Filename: Shoebox SBN 300W - 277V
Manufacturer: SARIN Energy Inc.
Luminaire: SES-SBN-3000-300 277V
Lamp Output: Total luminaire Lumens: 38988.6
Max Candela: 18,262.5 at Horizontal: 67.5°, Vertical: 73°
Input Wattage: 298.7
Luminous Opening: Point
Test Date: 2016-10-09
Test Lab: Standard-Tech Co. Ltd
Photometry : Type C
Nema Type: 7 X 7



Roadway Summary

Cutoff Classification:	CUTOFF
Distribution:	TYPE III, MEDIUM
Max Cd, 90 Deg Vert:	14.4
Max Cd, 80 to <90 Deg:	2,071.5
	Lumens % Lamp
Downward Street Side:	26,218.2 67.2%
Downward House Side:	12,683.3 32.5%
Downward Total:	38,901.5 99.8%
Upward Street Side:	33.0 0.1%
Upward House Side:	56.7 0.1%
Upward Total:	89.8 0.2%
Total Lumens:	38,991.3 100%

Flood Summary

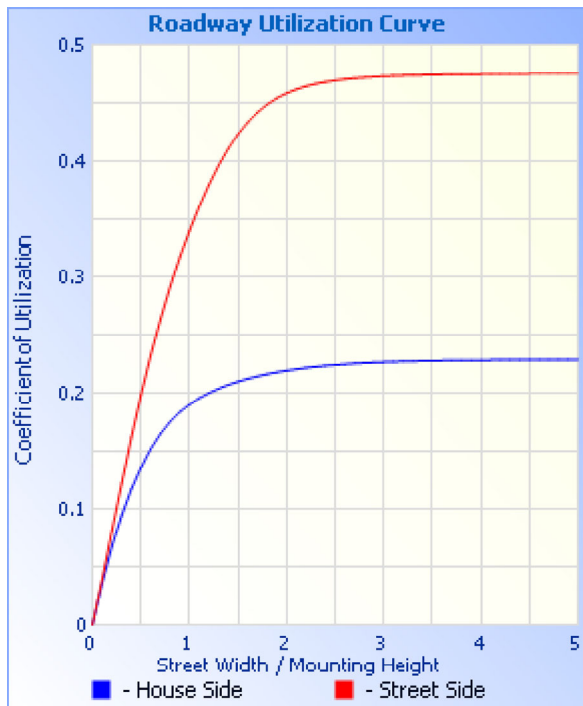
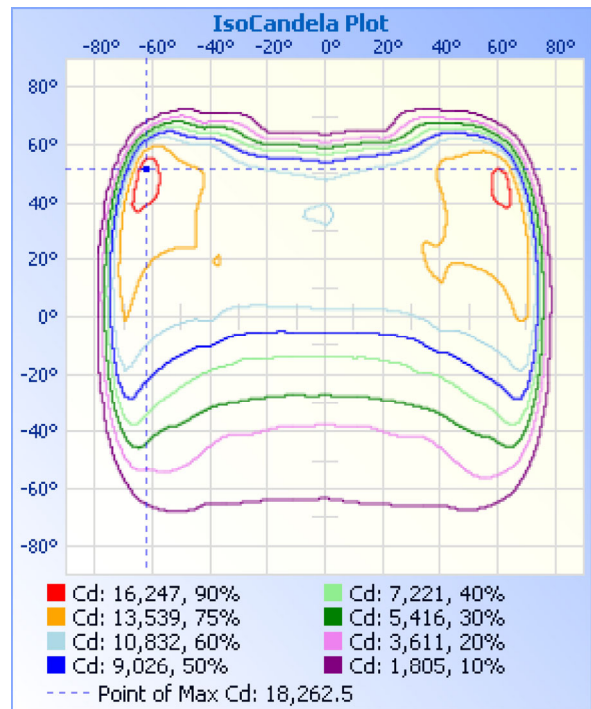
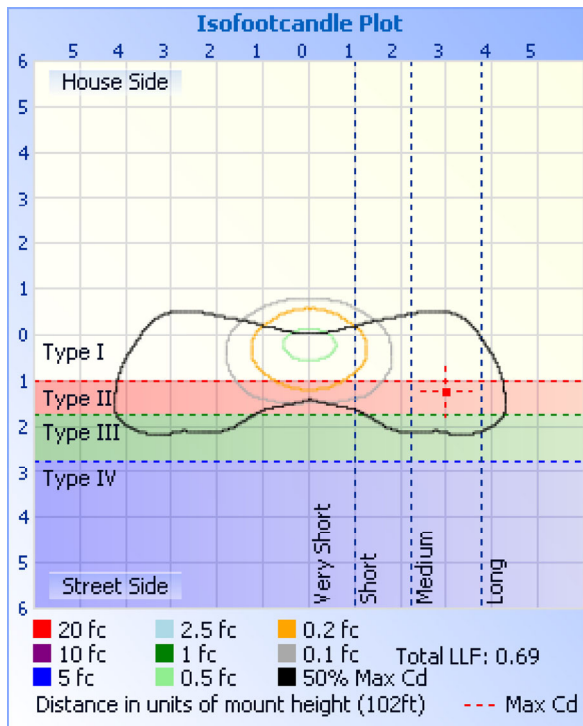
	Efficiency	Lumens	Horizontal Spread	Vertical Spread
Field (10%):	97.6%	38,047.7	145.9	133.7
Beam (50%):	70.2%	27,362.3	135.4	84
Total:	100%	38,975.9		

Zonal Lumen Summary

Zone	Lumens	% Luminaire
0-30	8,035.1	20.6%
0-40	13,663.4	35%
0-60	27,829.7	71.4%
60-90	11,069.2	28.4%
70-100	4,136.1	10.6%
90-120	35.9	0.1%
0-90	38,898.9	99.8%
90-180	89.7	0.2%
0-180	38,988.6	100%

Lumens Per Zone

Zone	Lumens	% Total	Zone	Lumens	% Total
0-10	964.2	2.5%	90-100	8.1	0%
10-20	2,761.9	7.1%	100-110	12.3	0%
20-30	4,309.0	11.1%	110-120	15.4	0%
30-40	5,628.3	14.4%	120-130	15.4	0%
40-50	6,738.4	17.3%	130-140	13.3	0%
50-60	7,427.9	19.1%	140-150	10.4	0%
60-70	6,941.2	17.8%	150-160	7.9	0%
70-80	3,923.1	10.1%	160-170	4.9	0%
80-90	204.9	0.5%	170-180	2.0	0%



Illuminance at a Distance

	Center Beam fc	Beam Width	
16.7ft	36.6 fc	30.1 ft	81.5 ft
33.3ft	9.22 fc	60.0 ft	162.6 ft
50.0ft	4.09 fc	90.0 ft	244.1 ft
66.7ft	2.30 fc	120.1 ft	325.6 ft
83.3ft	1.47 fc	150.0 ft	406.6 ft
100.0ft	1.02 fc	180.0 ft	488.2 ft

Vert. Spread: 84.0°
Horiz. Spread: 135.4°

Coefficients Of Utilization - Zonal Cavity Method

Effective Floor Cavity Reflectance: 20%

RCC %:	80				70				50			30			10			0
RW %:	70	50	30	0	70	50	30	0	50	30	20	50	30	20	50	30	20	0
RCR: 0	1.19	1.19	1.19	1.19	1.16	1.16	1.16	1.00	1.11	1.11	1.11	1.06	1.06	1.06	1.02	1.02	1.02	1.00
1	1.08	1.03	.98	.94	1.05	1.00	.96	.83	.96	.93	.89	.92	.89	.87	.88	.86	.84	.82
2	.97	.88	.80	.74	.94	.86	.79	.67	.82	.76	.71	.79	.74	.70	.76	.72	.68	.66
3	.87	.76	.67	.60	.85	.74	.66	.55	.71	.64	.58	.68	.62	.57	.65	.60	.56	.53

4	.79	.66	.56	.49	.77	.65	.56	.46	.62	.54	.48	.60	.53	.47	.57	.51	.47	.44
5	.72	.58	.49	.41	.70	.57	.48	.39	.55	.47	.41	.53	.46	.40	.51	.45	.40	.37
6	.66	.52	.42	.35	.64	.51	.42	.34	.49	.41	.35	.47	.40	.34	.46	.39	.34	.32
7	.61	.47	.37	.31	.59	.46	.37	.30	.44	.36	.30	.43	.35	.30	.41	.35	.30	.28
8	.57	.42	.33	.27	.55	.42	.33	.26	.40	.32	.27	.39	.32	.27	.38	.31	.26	.24
9	.53	.39	.30	.24	.51	.38	.30	.23	.37	.29	.24	.36	.29	.24	.35	.28	.23	.22
10	.49	.35	.27	.22	.48	.35	.27	.21	.34	.26	.21	.33	.26	.21	.32	.26	.21	.19

Candela Table - Type C

	0	22.5	45	67.5	90	112.5	135	157.5	180	202.5	225	247.5	270	292.5	315	337.5	360
0	10221	10221	10221	10221	10221	10221	10221	10221	10221	10221	10221	10221	10221	10221	10221	10221	10221
1	10426	10407	10365	10296	10223	10144	10072	10021	10004	10024	10073	10140	10222	10302	10368	10413	10426
2	10621	10580	10505	10370	10227	10059	9917	9813	9778	9820	9919	10056	10223	10379	10510	10594	10621
3	10810	10747	10638	10443	10228	9977	9761	9606	9546	9611	9761	9976	10226	10453	10648	10765	10810
4	10982	10903	10767	10510	10222	9892	9598	9391	9310	9395	9593	9891	10233	10530	10780	10921	10982
5	11138	11046	10884	10569	10210	9805	9430	9174	9078	9175	9427	9801	10242	10605	10907	11067	11138
6	11279	11175	10993	10631	10194	9713	9258	8954	8840	8954	9260	9709	10249	10675	11024	11204	11279
7	11405	11295	11096	10695	10179	9613	9083	8731	8602	8732	9096	9618	10250	10747	11134	11327	11405
8	11511	11403	11194	10760	10165	9515	8911	8517	8370	8512	8928	9528	10255	10816	11239	11439	11511
9	11605	11502	11286	10823	10152	9410	8739	8303	8143	8295	8759	9438	10261	10889	11340	11536	11605
10	11681	11586	11367	10882	10141	9303	8566	8096	7918	8080	8591	9346	10266	10963	11435	11624	11681
11	11744	11652	11437	10940	10129	9197	8391	7883	7690	7875	8423	9256	10269	11038	11520	11699	11744
12	11791	11710	11504	10996	10121	9097	8215	7676	7481	7674	8259	9167	10272	11110	11597	11763	11791
13	11820	11759	11569	11053	10117	8994	8044	7476	7287	7485	8097	9076	10277	11181	11675	11817	11820
14	11831	11790	11633	11110	10117	8887	7876	7288	7108	7308	7934	8980	10285	11248	11748	11859	11831
15	11833	11806	11693	11171	10120	8780	7715	7114	6942	7135	7776	8884	10297	11321	11810	11888	11833
16	11828	11812	11744	11235	10124	8683	7554	6952	6783	6973	7623	8782	10309	11400	11865	11899	11828
17	11809	11808	11789	11290	10128	8585	7398	6796	6630	6819	7478	8687	10323	11473	11917	11903	11809
18	11776	11790	11829	11346	10136	8486	7256	6652	6488	6673	7342	8605	10335	11549	11972	11896	11776
19	11721	11755	11857	11414	10153	8387	7123	6519	6359	6538	7206	8530	10352	11614	12021	11876	11721
20	11650	11714	11879	11477	10166	8291	7001	6395	6230	6414	7082	8442	10372	11672	12063	11844	11650
21	11569	11665	11898	11529	10170	8190	6877	6274	6113	6294	6965	8356	10389	11732	12090	11800	11569
22	11495	11614	11913	11579	10180	8093	6762	6160	5994	6184	6850	8277	10412	11803	12100	11754	11495
23	11431	11572	11926	11645	10187	8006	6648	6048	5880	6079	6739	8188	10447	11885	12108	11718	11431
24	11359	11533	11943	11707	10189	7922	6536	5940	5765	5974	6632	8110	10475	11966	12125	11676	11359
25	11275	11468	11956	11764	10193	7834	6434	5828	5641	5869	6542	8036	10500	12052	12141	11621	11275
26	11193	11405	11950	11833	10203	7751	6339	5712	5514	5753	6456	7967	10532	12135	12144	11563	11193
27	11124	11344	11929	11899	10220	7669	6243	5600	5385	5641	6372	7898	10568	12219	12146	11501	11124
28	11081	11280	11902	11964	10237	7593	6163	5480	5247	5526	6286	7831	10599	12306	12151	11455	11081
29	11040	11226	11887	12030	10256	7517	6080	5353	5094	5403	6207	7766	10643	12391	12149	11426	11040
30	10993	11180	11880	12093	10274	7439	5992	5219	4927	5277	6132	7708	10687	12460	12150	11392	10993
31	10924	11131	11873	12149	10306	7371	5917	5075	4748	5137	6064	7658	10750	12544	12166	11357	10924
32	10854	11056	11868	12205	10342	7317	5849	4928	4564	4992	6014	7620	10810	12632	12186	11316	10854
33	10805	10994	11869	12272	10370	7279	5795	4768	4368	4837	5968	7619	10870	12726	12210	11272	10805
34	10766	10953	11873	12349	10402	7273	5725	4605	4167	4668	5916	7653	10951	12808	12249	11239	10766
35	10743	10914	11891	12434	10458	7315	5622	4430	3957	4493	5807	7694	11052	12898	12291	11221	10743
36	10743	10883	11885	12525	10536	7291	5513	4249	3758	4309	5692	7683	11184	13012	12337	11195	10743
37	10764	10867	11876	12621	10654	7226	5411	4058	3560	4119	5586	7651	11334	13145	12371	11162	10764
38	10793	10865	11860	12749	10822	7173	5308	3867	3401	3932	5477	7597	11572	13314	12398	11135	10793
39	10816	10875	11846	12952	10985	7094	5202	3681	3242	3744	5370	7506	11798	13601	12448	11120	10816
40	10833	10883	11864	13243	11132	7007	5080	3503	3082	3566	5250	7414	11953	14034	12529	11120	10833
41	10869	10904	11917	13625	11209	6938	4960	3347	2924	3401	5126	7346	11955	14425	12609	11131	10869
42	10915	10941	11958	13890	11160	6869	4828	3191	2806	3265	4997	7283	11821	14627	12629	11149	10915
43	10959	10980	11931	13790	11021	6808	4696	3037	2710	3130	4861	7245	11681	14326	12564	11181	10959
44	10996	11036	11871	13488	10955	6769	4553	2915	2618	2994	4718	7204	11645	13994	12474	11220	10996
45	11014	11088	11847	13337	10936	6727	4397	2812	2536	2893	4564	7181	11662	13877	12392	11271	11014
46	11020	11149	11829	13327	10941	6686	4242	2723	2463	2801	4401	7161	11707	13880	12349	11331	11020

47	10993	11214	11825	13356	10969	6645	4079	2640	2402	2717	4230	7149	11744	13890	12353	11399	10993
48	10926	11264	11864	13409	11011	6609	3923	2570	2343	2642	4058	7127	11790	13948	12383	11452	10926
49	10792	11287	11926	13465	11065	6573	3761	2504	2294	2568	3890	7102	11853	14015	12419	11481	10792
50	10598	11281	12008	13550	11117	6536	3604	2442	2255	2501	3725	7073	11927	14099	12479	11483	10598
51	10351	11236	12095	13630	11169	6503	3461	2381	2229	2438	3565	7046	11998	14165	12538	11458	10351
52	10043	11151	12189	13711	11218	6465	3328	2324	2222	2378	3416	7010	12080	14247	12626	11388	10043
53	9676	11000	12305	13789	11275	6419	3196	2271	2223	2327	3293	6973	12170	14326	12727	11270	9676
54	9209	10780	12438	13889	11342	6377	3063	2221	2214	2274	3169	6932	12250	14430	12837	11089	9209
55	8649	10507	12583	13971	11418	6327	2966	2176	2186	2230	3045	6880	12316	14530	12960	10846	8649
56	7985	10149	12731	14066	11504	6268	2868	2131	2141	2190	2945	6815	12392	14628	13076	10553	7985
57	7229	9696	12855	14185	11587	6212	2785	2092	2089	2155	2853	6724	12467	14713	13207	10182	7229
58	6357	9126	12977	14303	11673	6141	2710	2057	2039	2124	2760	6624	12551	14812	13325	9686	6357
59	5429	8413	13081	14429	11773	6049	2633	2023	1989	2095	2683	6497	12637	14914	13433	9061	5429
60	4534	7622	13151	14571	11875	5945	2568	1993	1942	2068	2611	6377	12723	15021	13526	8338	4534
61	3687	6673	13184	14726	11994	5833	2505	1961	1898	2039	2539	6238	12807	15143	13590	7469	3687
62	2949	5712	13157	14876	12122	5701	2442	1928	1852	2015	2471	6105	12929	15272	13615	6456	2949
63	2276	4666	13073	15058	12270	5556	2379	1893	1800	1986	2406	5964	13066	15421	13603	5365	2276
64	1709	3693	12910	15277	12440	5405	2320	1856	1743	1955	2341	5823	13207	15599	13497	4280	1709
65	1318	2778	12664	15504	12631	5253	2255	1811	1676	1913	2282	5666	13365	15787	13334	3242	1318
66	927	1976	12269	15735	12839	5096	2192	1756	1593	1854	2230	5508	13542	16038	13054	2322	927
67	741	1542	11742	16062	13056	4938	2128	1688	1495	1779	2184	5356	13694	16320	12672	1568	741
68	653	1117	11030	16431	13317	4757	2065	1606	1379	1678	2142	5168	13808	16621	12165	1174	653
69	600	692	10136	16842	13548	4568	2005	1504	1249	1551	2096	4964	13799	16940	11493	782	600
70	556	587	9064	17292	13665	4367	1941	1384	1047	1400	2040	4757	13509	17198	10656	634	556
71	517	532	7831	17749	13527	4155	1866	1244	730	1227	1954	4521	12835	17404	9596	566	517
72	480	484	6470	18113	13064	3941	1770	1090	569	1044	1840	4259	11701	17238	8385	510	480
73	441	443	5106	18263	12172	3734	1654	932	492	858	1680	3986	10094	16485	6974	465	441
74	411	409	3815	17978	10804	3519	1514	768	424	673	1486	3598	8160	14982	5445	427	411
75	389	378	2743	16933	8988	3244	1347	563	392	481	1250	3209	6163	12650	3987	391	389
76	364	349	1955	14968	6970	2968	1160	386	369	341	1011	2820	4315	9704	2767	359	364
77	331	320	1553	11908	5292	2692	960	280	348	266	780	2326	2801	6535	1868	328	331
78	299	296	1155	8163	3613	2300	717	229	328	227	531	1814	1704	3867	1435	299	299
79	267	276	756	4600	1940	1881	360	199	306	199	302	1332	1155	2011	1012	277	267
80	236	254	564	2072	1071	1466	215	176	272	177	218	930	621	1453	589	254	236
81	205	225	443	1468	582	1099	184	155	218	156	188	648	393	922	438	225	205
82	176	188	356	922	349	808	156	137	175	139	162	452	270	390	348	190	176
83	148	155	289	377	233	566	132	123	148	125	137	319	199	310	285	159	148
84	121	128	232	298	168	238	110	109	128	110	115	162	153	259	229	131	121
85	98	107	183	241	126	109	88	95	111	96	93	108	118	209	179	111	98
86	74	90	138	193	98	81	68	80	88	82	72	83	91	160	135	91	74
87	47	62	104	148	73	61	49	62	63	64	52	61	60	114	102	59	47
88	22	35	64	81	39	33	26	35	38	40	28	33	28	53	52	30	22
89	2	4	16	21	13	10	5	4	4	6	8	14	13	15	11	3	2
90	1	1	6	14	12	10	4	1	1	1	5	14	13	13	7	2	1
91	1	1	5	13	12	11	5	1	1	1	6	15	13	11	6	1	1
92	1	1	4	11	12	12	5	1	1	1	6	16	13	10	5	1	1
93	1	1	4	11	13	13	6	1	0	1	7	18	14	9	5	1	1
94	1	1	4	10	13	15	7	1	0	1	8	19	15	9	4	1	1
95	1	1	4	10	14	16	8	1	0	1	9	20	16	8	4	1	1

96	1	1	3	9	15	17	9	1	0	1	10	22	17	8	4	1	1
97	1	1	3	9	16	19	10	1	1	2	11	23	18	8	4	1	1
98	1	2	3	9	17	20	12	2	1	2	12	24	20	8	4	1	1
99	1	2	3	9	17	21	13	2	1	2	13	25	20	8	4	2	1
100	1	2	4	10	18	22	14	3	1	3	14	25	21	8	4	2	1
101	1	2	4	10	19	23	14	3	2	4	15	26	22	9	4	2	1
102	2	2	4	10	20	23	15	4	2	4	16	26	22	9	4	2	2
103	2	3	4	11	21	24	15	5	3	5	17	26	23	10	4	2	2
104	2	3	4	11	21	24	16	6	3	6	18	26	24	10	4	2	2
105	2	3	4	12	22	24	16	6	4	7	19	26	24	11	4	3	2
106	2	3	5	12	23	24	17	7	4	8	19	26	25	12	4	3	2
107	3	3	5	13	24	24	18	8	5	8	20	27	26	12	4	3	3
108	3	3	5	13	24	24	19	9	6	9	20	28	26	13	4	3	3
109	3	4	6	14	25	25	19	10	6	10	20	29	27	13	5	3	3
110	3	4	6	14	25	26	19	10	7	11	20	30	27	13	5	3	3
111	3	4	6	15	25	27	19	11	7	12	20	32	27	14	5	3	3
112	4	4	6	15	26	28	19	12	8	13	21	33	28	14	5	4	4
113	4	4	7	16	26	29	19	12	9	14	21	33	28	15	6	4	4
114	4	4	7	16	26	30	19	12	10	14	21	33	28	15	6	4	4
115	4	4	7	16	26	30	20	12	10	13	22	33	28	15	6	4	4
116	4	4	8	16	26	30	20	12	11	12	22	32	28	15	6	4	4
117	4	4	8	17	26	30	21	12	12	12	23	32	29	15	7	4	4
118	4	4	8	17	26	30	22	12	12	12	24	32	29	15	7	3	4
119	4	4	9	17	25	30	23	13	12	13	24	31	29	15	7	4	4
120	4	5	9	17	25	30	23	15	12	15	24	31	29	15	8	5	4
121	5	6	9	17	25	30	23	16	13	16	24	30	29	16	8	5	5
122	6	6	9	17	25	29	22	15	15	15	24	29	29	16	8	6	6
123	7	7	9	17	24	28	22	15	17	15	24	28	29	16	8	6	7
124	7	7	9	17	23	28	21	15	17	16	23	28	28	16	8	6	7
125	8	7	9	18	23	27	20	16	16	17	23	28	27	16	8	7	8
126	8	8	9	18	23	26	20	18	16	18	23	28	27	16	8	7	8
127	9	8	10	18	24	26	20	19	17	20	24	27	27	16	8	7	9
128	9	8	10	18	25	25	19	21	18	21	24	26	27	16	8	7	9
129	9	8	10	18	23	24	19	23	19	22	24	26	26	16	8	8	9
130	9	8	10	17	22	23	19	23	21	23	24	25	25	16	8	8	9
131	10	9	10	16	22	22	19	24	21	24	24	24	24	15	8	8	10
132	10	9	10	16	22	21	19	25	21	24	24	24	23	15	8	8	10
133	10	9	10	15	21	21	19	25	22	25	24	24	22	14	8	8	10
134	10	9	10	15	21	20	19	25	22	25	23	24	22	14	8	9	10
135	10	10	10	15	21	20	19	25	22	25	23	24	22	14	8	9	10
136	11	10	10	15	21	20	18	25	22	24	22	24	21	14	8	9	11
137	11	10	10	15	20	20	17	25	22	24	20	24	21	14	8	9	11
138	11	10	10	15	20	21	17	25	21	24	20	24	21	14	8	9	11
139	11	10	10	16	20	21	16	25	20	23	19	24	21	14	8	10	11
140	11	10	9	16	20	20	16	25	20	23	18	25	21	14	8	10	11
141	11	11	9	15	20	20	16	24	19	23	18	25	21	14	8	10	11
142	11	11	9	15	20	20	16	23	19	22	19	25	20	14	8	10	11
143	11	11	9	15	20	20	16	23	19	22	19	25	20	13	8	10	11
144	10	11	9	14	20	19	16	23	18	22	20	24	20	13	8	11	10

145	9	11	9	14	19	19	16	23	18	22	20	24	19	13	9	11	9
146	11	12	9	14	19	19	16	23	19	22	21	24	19	13	9	11	11
147	11	12	10	15	19	19	17	23	20	22	22	24	19	13	10	11	11
148	12	12	11	15	19	19	18	23	20	22	23	23	19	13	11	11	12
149	12	12	11	15	19	19	18	23	20	21	25	23	19	13	11	12	12
150	12	13	12	15	19	19	19	23	20	21	26	22	19	13	12	12	12
151	13	13	13	15	18	19	19	23	20	20	26	22	18	13	12	12	13
152	13	13	13	15	18	19	20	22	20	20	25	21	18	13	13	13	13
153	13	14	14	15	18	19	20	22	20	20	25	21	18	13	13	13	13
154	13	14	14	15	17	19	19	22	19	19	25	21	17	13	14	13	13
155	14	14	14	15	17	19	18	21	18	19	24	21	16	13	14	13	14
156	14	14	14	16	16	19	18	21	18	19	24	21	16	13	14	14	14
157	14	14	14	16	16	19	18	21	18	19	23	21	15	14	15	14	14
158	14	14	15	16	16	18	18	20	18	18	22	21	15	14	15	14	14
159	14	14	15	16	16	18	17	20	18	18	22	21	15	14	15	14	14
160	14	15	15	15	17	18	16	19	19	18	21	21	16	14	15	15	14
161	15	15	15	15	17	17	16	19	19	18	21	21	16	14	15	15	15
162	15	15	15	15	17	16	16	19	18	18	20	21	16	14	16	15	15
163	15	15	15	15	17	16	16	19	18	17	19	22	16	14	16	15	15
164	15	16	16	15	17	16	16	19	18	17	19	22	16	14	16	16	15
165	15	16	16	15	17	16	16	19	18	17	19	22	16	15	17	15	15
166	16	16	16	15	17	17	17	19	18	17	19	22	16	15	17	15	16
167	16	16	17	15	18	18	17	19	19	18	20	23	17	16	17	15	16
168	16	17	18	16	19	19	18	21	22	21	22	25	17	16	18	16	16
169	16	18	19	17	19	19	19	23	24	23	24	26	18	17	19	17	16
170	16	19	20	17	20	20	20	23	25	24	25	26	18	18	19	18	16
171	18	20	20	17	21	21	21	23	25	24	25	26	19	18	20	19	18
172	19	20	21	18	21	21	21	23	25	24	25	26	19	19	20	19	19
173	20	20	21	18	21	21	21	23	25	24	24	26	19	19	21	19	20
174	21	20	21	18	21	21	22	23	24	24	24	26	20	19	21	20	21
175	21	20	22	19	21	21	22	23	24	24	23	26	20	20	21	20	21
176	22	20	22	19	21	21	22	22	23	23	22	25	20	21	21	20	22
177	22	20	22	19	20	21	21	22	22	23	22	24	20	21	21	20	22
178	22	20	22	19	19	20	21	21	21	22	21	24	20	21	21	20	22
179	21	20	22	19	19	19	20	20	20	21	20	23	19	21	21	20	21
180	21	21	21	21	21	21	21	21	21	21	21	21	21	21	21	21	21

Luminaire Report Summary

IESNA:LM-63-2002
[TEST]
[TESTDATE] 2016-10-09
[TESTLAB] Standard-Tech Co. Ltd
[ISSUEDATE] 2016-10-09 15:20:25
[MANUFAC] SARIN Energy Inc.
[LUMINAIRE] SES-SBN-3000-300 277V
[_LAMPPOSITION] 0,0
[_TOTALLUMINAIRELUMENS] 38988.6
[OTHER] EVERFINE GO-R5000_V2 SYSTEMGamma(deg) Fz(lm) Ft(lm) %Lum %Lamp0- 10 964.25
964.25 2.47 2.4510- 20 2761.99 3726.24 9.56 9.4620- 30 4309.07 8035.31 20.61
20.4030- 40 5629.27 13664.58 35.04 34.6940- 50 6739.96 20404.55 52.33 51.8050- 60
7429.74 27834.28 71.38 70.6660- 70 6941.99 34776.27 89.18 88.2970- 80 3923.37
38699.65 99.24 98.2580- 90 204.89 38904.53 99.77 98.7790-100 8.12 38912.66 99.79
98.79100-110 12.35 38925.00 99.82 98.82110-120 15.39 38940.39 99.86 98.86120-130
15.41 38955.79 99.90 98.90130-140 13.30 38969.09 99.94 98.93140-150 10.38 38979.47
99.96 98.96150-160 7.88 38987.35 99.98 98.98160-170 4.93 38992.27 99.99 98.99170-
180 2.03 38994.30 100.00 98.99

FILE: CREATED USING ABSOLUTE PHOTOMETRY
FILE: CANDELA MULTIPLIER: 1
FILE: VERTICAL ANGLES: 181, HORIZONTAL ANGLES: 17
FILE: COORDINATE SYSTEM: TYPE C
FILE: UNIT OF MEASURE: METRIC
FILE: BALLAST FACTOR: 1

Photometrics Pro 1.3.29 copyright 2003-2019 by jSolutions, Inc.
Reported data calculated from manufacturer's data file, based on IES recommended methods.