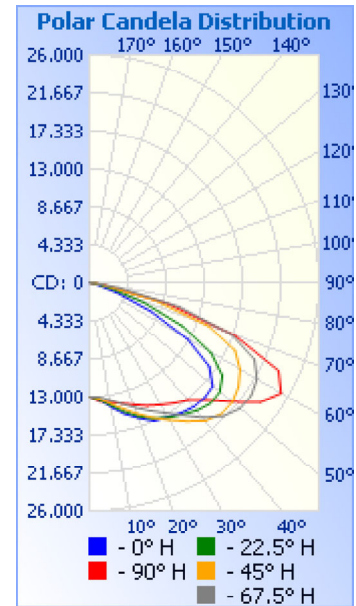


Photometrics Pro

Luminaire Photometric Report

Filename: Slim Shoebox SSB 500W
Manufacturer: SARIN Energy Inc
Luminaire: SES-SSB-3000-500
Lamp Output: 1 lamp, rated Lumens/lamp: 63483.3
Max Candela: 25,057.9 at Horizontal: 90°, Vertical: 60°
Input Wattage: 498.59
Luminous Opening: Point
Photometry : Type C
Nema Type: 7 X 7



Roadway Summary

Cutoff Classification:	CUTOFF	
Distribution:	TYPE III, SHORT	
Max Cd, 90 Deg Vert:	117.3	
Max Cd, 80 to <90 Deg:	4,265.4	
	Lumens	% Lamp
Downward Street Side:	40,018.0	63%
Downward House Side:	23,359.3	36.8%
Downward Total:	63,377.3	99.8%
Upward Street Side:	41.7	0.1%
Upward House Side:	53.3	0.1%
Upward Total:	95.0	0.1%
Total Lumens:	63,472.3	100%

Flood Summary

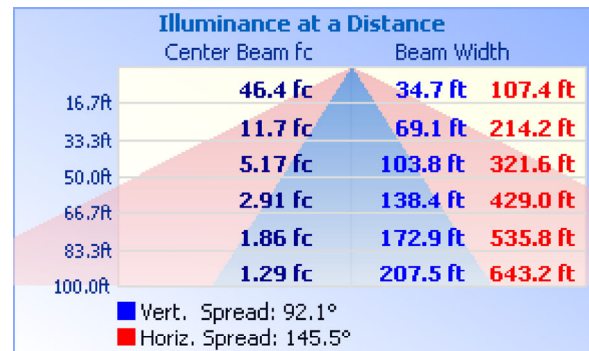
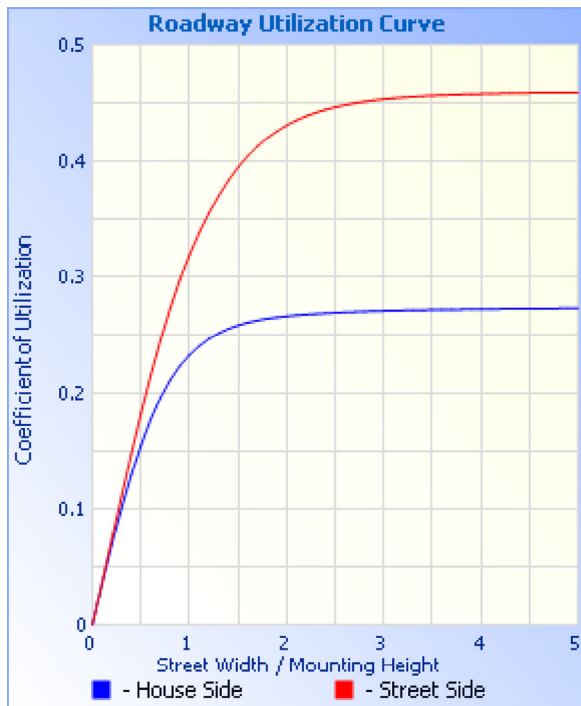
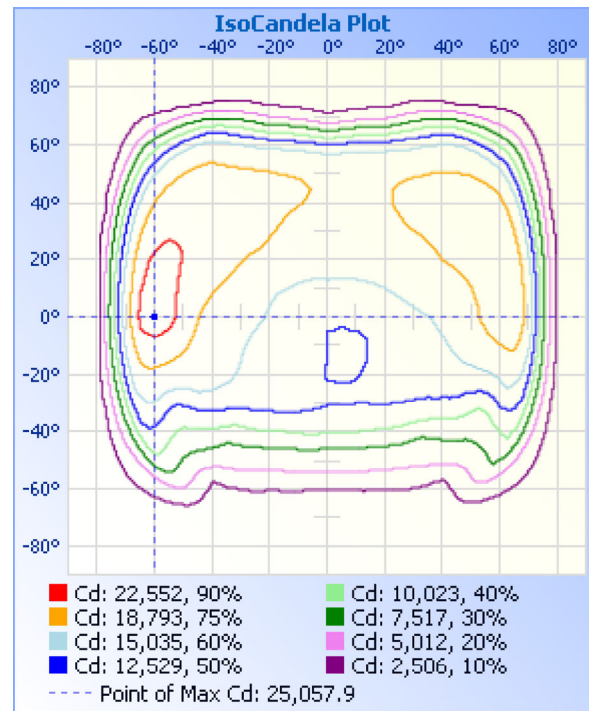
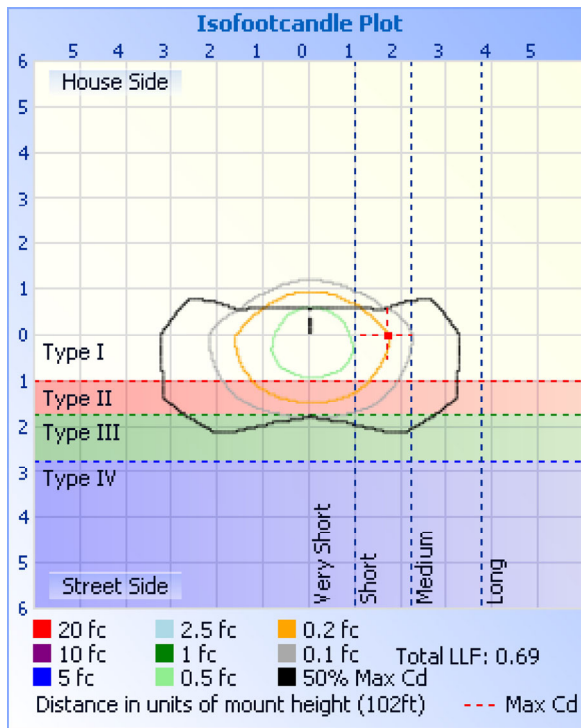
	Efficiency	Lumens	Horizontal Spread	Vertical Spread
Field (10%):	97.5%	61,893.1	158.9	134
Beam (50%):	78.5%	49,849.2	145.5	92.1
Total:	99.9%	63,449.9		

Zonal Lumen Summary

Zone	Lumens	% Lamp	% Luminaire
0-30	12,052.3	19%	19%
0-40	21,848.3	34.4%	34.4%
0-60	46,676.0	73.5%	73.5%
60-90	16,695.2	26.3%	26.3%
70-100	5,614.6	8.8%	8.8%
90-120	43.5	0.1%	0.1%
0-90	63,371.1	99.8%	99.9%
90-180	95.0	0.1%	0.1%
0-180	63,466.2	100%	100%

Lumens Per Zone

Zone	Lumens	% Total	Zone	Lumens	% Total
0-10	1,257.7	2.0%	90-100	20.3	0%
10-20	3,924.2	6.2%	100-110	10.4	0%
20-30	6,870.4	10.8%	110-120	12.8	0%
30-40	9,796.0	15.4%	120-130	14.3	0%
40-50	11,972.7	18.9%	130-140	13.2	0%
50-60	12,855.0	20.3%	140-150	10.7	0%
60-70	11,100.8	17.5%	150-160	7.7	0%
70-80	5,006.0	7.9%	160-170	4.3	0%
80-90	588.3	0.9%	170-180	1.4	0%



Coefficients Of Utilization - Zonal Cavity Method

Effective Floor Cavity Reflectance: 20%

RCC %:	80				70				50			30			10			0
RW %:	70	50	30	0	70	50	30	0	50	30	20	50	30	20	50	30	20	0
RCR: 0	1.19	1.19	1.19	1.19	1.16	1.16	1.16	1.00	1.11	1.11	1.11	1.06	1.06	1.06	1.02	1.02	1.02	1.00
1	1.08	1.03	.98	.94	1.05	1.01	.97	.83	.96	.93	.90	.92	.90	.87	.89	.86	.84	.82
2	.97	.88	.81	.75	.94	.86	.79	.68	.83	.77	.72	.79	.74	.70	.76	.72	.69	.66
3	.87	.76	.67	.60	.85	.74	.66	.56	.71	.64	.58	.68	.62	.57	.66	.61	.56	.54

4	.79	.66	.57	.49	.77	.65	.56	.47	.62	.54	.48	.60	.53	.48	.57	.52	.47	.45
5	.72	.58	.49	.41	.70	.57	.48	.39	.55	.47	.41	.53	.46	.40	.51	.45	.40	.37
6	.66	.52	.42	.35	.64	.51	.42	.34	.49	.41	.35	.47	.40	.34	.45	.39	.34	.32
7	.61	.46	.37	.30	.59	.45	.37	.29	.44	.36	.30	.42	.35	.30	.41	.34	.29	.27
8	.56	.42	.33	.27	.55	.41	.32	.26	.40	.32	.26	.38	.31	.26	.37	.31	.26	.24
9	.52	.38	.29	.23	.51	.37	.29	.23	.36	.29	.23	.35	.28	.23	.34	.28	.23	.21
10	.49	.35	.26	.21	.48	.34	.26	.20	.33	.26	.21	.32	.25	.21	.31	.25	.20	.19

Candela Table - Type C

	0	22.5	45	67.5	90	112.5	135	157.5	180	202.5	225	247.5	270	292.5	315	337.5	360
0	12934	12934	12934	12934	12934	12934	12934	12934	12934	12934	12934	12934	12934	12934	12934	12934	12934
5	13340	13356	13248	13022	13527	13178	12959	12727	12510	12501	12485	12562	13331	13300	13385	13433	13340
10	14378	14177	13958	13546	13773	13261	12970	12672	12508	12359	12393	12492	13372	13606	13954	14173	14378
15	15443	15165	14852	14238	14184	13498	13099	12745	12517	12330	12408	12562	13552	14019	14619	15107	15443
20	16368	16126	15860	15095	14739	13828	13338	12878	12451	12368	12539	12747	13839	14558	15411	16025	16368
25	17322	17040	16954	16041	15429	14204	13588	13133	12677	12584	12763	12930	14258	15287	16332	16808	17322
30	17651	17708	17988	17096	16007	14685	13789	13189	12571	12681	13036	13099	14597	16079	17175	17424	17651
35	18087	18308	19228	18385	16688	15298	13758	12519	11892	12167	13013	13428	14967	16966	17866	17809	18087
40	18396	18958	20460	20011	17378	15901	12988	10829	9963	10531	12280	13882	15576	17906	18617	18143	18396
45	18448	19389	21112	21446	18800	16192	11028	8413	7628	8208	10389	14110	16255	19084	19384	18324	18448
50	18233	19267	21103	22249	20984	15513	8564	6471	5956	6317	7849	13498	17494	20223	19842	18290	18233
55	16566	18378	20616	22362	23641	13345	6852	5133	4612	5092	6218	11508	19928	20975	19765	17536	16566
60	12824	15892	19707	21922	25058	10998	5469	2960	2372	2929	5126	9092	21816	21160	18958	15231	12824
65	7655	11617	18195	20629	23625	11100	2550	1778	1485	1710	2290	9121	22231	20562	17324	11001	7655
70	3289	6554	14387	17114	17597	10813	1778	1370	929	1304	1654	8887	17072	17954	13904	6001	3289
75	892	2517	7653	10552	9225	3597	1343	901	611	820	1241	3315	7714	11107	7849	2186	892
80	499	769	1311	3550	1821	1345	795	488	357	446	737	1189	1682	4265	1340	692	499
85	241	315	390	509	340	840	255	208	154	218	266	694	376	763	416	305	241
90	26	54	61	94	42	45	28	18	6	18	29	60	30	117	79	60	26
95	5	5	8	12	13	11	8	6	4	6	9	13	12	11	9	7	5
100	4	4	7	12	12	13	11	8	6	7	10	14	12	9	7	5	4
105	3	4	7	13	12	15	15	12	9	9	11	15	13	9	5	4	3
110	4	5	8	14	12	17	18	15	12	11	14	18	13	8	6	4	4
115	5	6	10	16	13	19	21	18	15	14	16	20	15	9	7	5	5
120	6	7	12	17	14	20	22	20	17	16	19	22	16	11	7	6	6
125	7	9	13	18	16	21	23	21	20	19	21	23	17	12	9	8	7
130	9	11	14	18	16	21	22	22	21	21	23	24	18	13	10	9	9
135	10	12	15	17	16	19	21	22	21	22	22	23	17	14	12	10	10
140	12	13	15	17	16	18	20	21	21	22	21	22	17	14	12	11	12
145	13	14	15	17	16	18	19	21	21	21	21	21	16	14	13	13	13
150	14	15	15	16	15	17	18	20	21	21	21	20	16	14	14	14	14
155	15	15	15	16	15	16	18	19	20	20	20	19	15	15	14	15	15
160	15	15	15	16	14	15	16	17	18	18	18	18	14	14	14	15	15
165	15	15	15	15	14	14	15	16	17	17	17	16	14	14	14	15	15
170	14	14	14	15	14	14	14	15	16	16	16	16	14	14	14	14	14
175	14	15	15	15	14	14	14	14	15	15	15	15	13	14	14	14	14
180	15	15	15	15	15	15	15	15	15	15	15	15	15	15	15	15	15

Luminaire Report Summary

IESNA:LM-63-2002
[TEST]
[TESTLAB]
[ISSUE DATE]
[MANUFAC] SARIN Energy Inc
[LUMINAIRE] SES-SSB-3000-500
[_TOTALLUMINAIRELUMENS] 63466.2
FILE: CANDELA MULTIPLIER: 1
FILE: VERTICAL ANGLES: 37, HORIZONTAL ANGLES: 17
FILE: COORDINATE SYSTEM: TYPE C
FILE: UNIT OF MEASURE: METRIC
FILE: BALLAST FACTOR: 1

Photometrics Pro 1.3.29 copyright 2003-2019 by jSolutions, Inc.
Reported data calculated from manufacturer's data file, based on IES recommended methods.