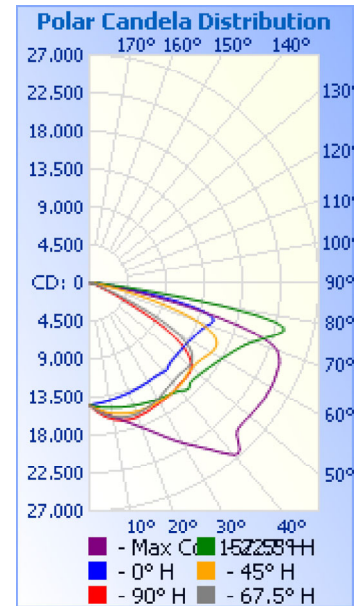


# Photometrics Pro

## Luminaire Photometric Report

**Filename:** Shoebox SBN 480W - 277V  
**Manufacturer:** SARIN Energ Inc.  
**Luminaire:** SES-SBN-4000-480 277V  
**Lamp Output:** Total luminaire Lumens: 59595.5  
**Max Candela:** 26,679.5 at Horizontal: 157.5°, Vertical: 41°  
**Input Wattage:** 448.9  
**Luminous Opening:** Point  
**Test Date:** 2015-12-23  
**Test Lab:** Standard-Tech Co. Ltd  
**Photometry :** Type C  
**Nema Type:** 6 X 7



### Roadway Summary

Cutoff Classification:	NONCUTOFF	
Distribution:	TYPE IV, VERY SHORT	
Max Cd, 90 Deg Vert:	29.8	
Max Cd, 80 to <90 Deg:	16,154.0	
	Lumens	% Lamp
Downward Street Side:	26,587.3	44.6%
Downward House Side:	32,882.0	55.2%
Downward Total:	59,469.3	99.8%
Upward Street Side:	72.8	0.1%
Upward House Side:	57.1	0.1%
Upward Total:	129.9	0.2%
Total Lumens:	59,599.2	100%

### Flood Summary

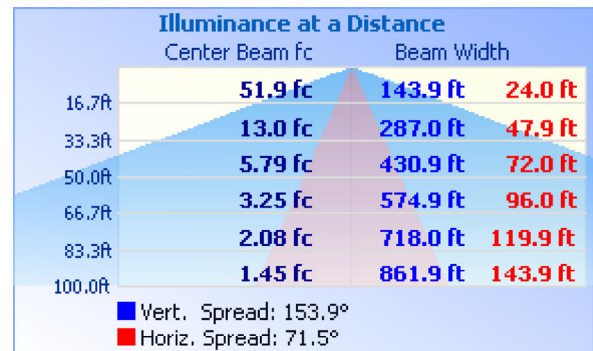
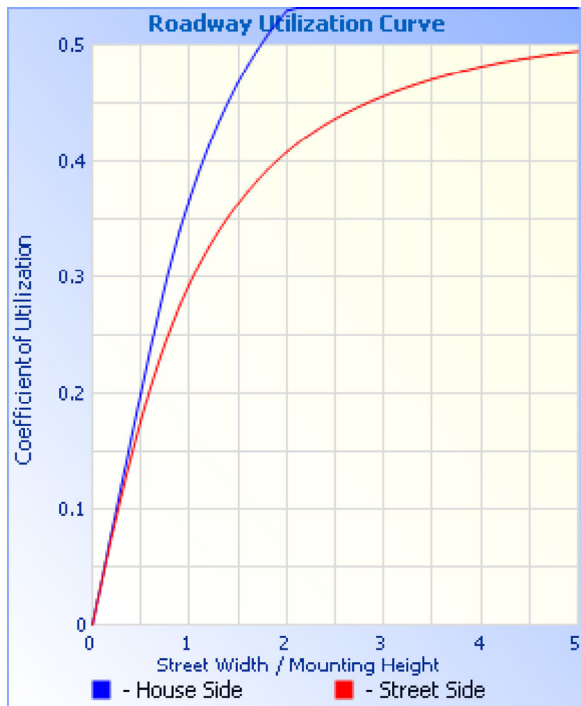
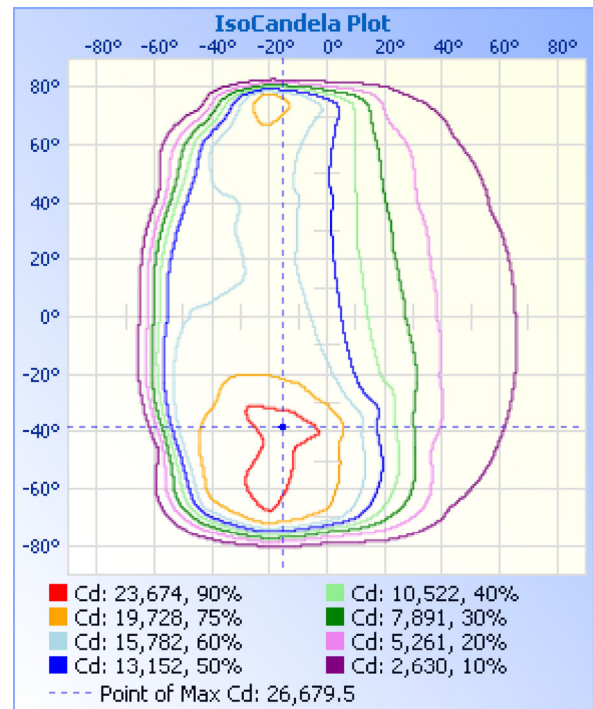
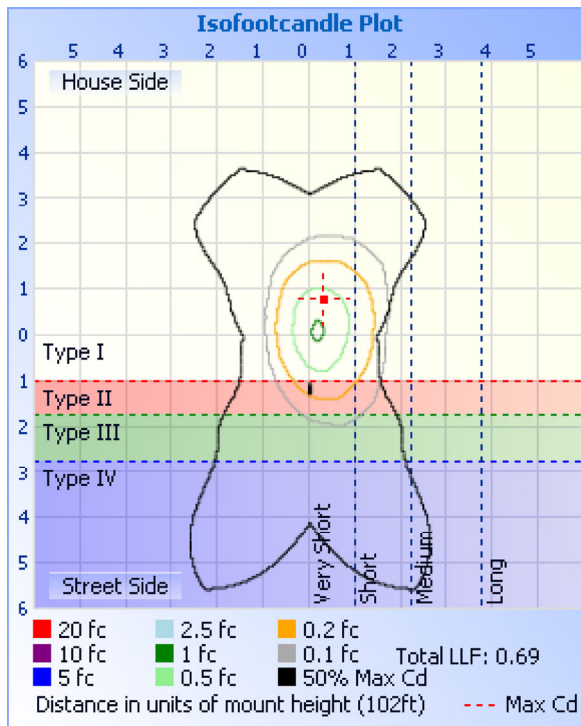
	Efficiency	Lumens	Horizontal Spread	Vertical Spread
Field (10%):	97.6%	58,167.3	123.8	162.9
Beam (50%):	70.4%	41,975.8	71.5	153.9
Total:	99.9%	59,554.3		

### Zonal Lumen Summary

Zone	Lumens	% Luminaire
0-30	11,806.6	19.8%
0-40	20,639.1	34.6%
0-60	42,279.1	70.9%
60-90	17,186.5	28.8%
70-100	6,964.0	11.7%
90-120	59.6	0.1%
0-90	59,465.6	99.8%
90-180	129.9	0.2%
0-180	59,595.5	100%

### Lumens Per Zone

Zone	Lumens	% Total	Zone	Lumens	% Total
0-10	1,371.1	2.3%	90-100	14.8	0%
10-20	3,992.7	6.7%	100-110	21.0	0%
20-30	6,442.8	10.8%	110-120	23.8	0%
30-40	8,832.4	14.8%	120-130	23.9	0%
40-50	10,379.6	17.4%	130-140	18.2	0%
50-60	11,260.4	18.9%	140-150	12.3	0%
60-70	10,237.3	17.2%	150-160	8.7	0%
70-80	6,260.4	10.5%	160-170	5.2	0%
80-90	688.8	1.2%	170-180	2.0	0%



**Coefficients Of Utilization - Zonal Cavity Method**

Effective Floor Cavity Reflectance: 20%

RCC %:	80				70				50			30			10			0
RW %:	70	50	30	0	70	50	30	0	50	30	20	50	30	20	50	30	20	0
RCR: 0	1.19	1.19	1.19	1.19	1.16	1.16	1.16	1.00	1.11	1.11	1.11	1.06	1.06	1.06	1.02	1.02	1.02	1.00
1	1.08	1.02	.98	.93	1.05	1.00	.96	.82	.96	.92	.89	.92	.89	.86	.88	.86	.83	.81
2	.96	.87	.80	.73	.94	.85	.78	.67	.82	.76	.71	.78	.73	.69	.75	.71	.67	.65
3	.87	.75	.66	.59	.84	.74	.65	.55	.70	.63	.57	.68	.61	.56	.65	.60	.55	.53

4	.79	.66	.56	.49	.76	.64	.55	.46	.62	.54	.47	.59	.52	.47	.57	.51	.46	.44
5	.72	.58	.48	.41	.70	.57	.47	.39	.54	.46	.40	.52	.45	.40	.50	.44	.39	.37
6	.66	.52	.42	.35	.64	.51	.41	.33	.49	.40	.34	.47	.40	.34	.45	.39	.34	.31
7	.61	.46	.37	.30	.59	.45	.36	.29	.44	.36	.30	.42	.35	.30	.41	.34	.29	.27
8	.56	.42	.33	.27	.55	.41	.33	.26	.40	.32	.26	.38	.31	.26	.37	.31	.26	.24
9	.52	.38	.30	.24	.51	.38	.29	.23	.36	.29	.23	.35	.28	.23	.34	.28	.23	.21
10	.49	.35	.27	.21	.48	.35	.27	.21	.33	.26	.21	.32	.26	.21	.32	.25	.21	.19

Candela Table - Type C

	0	22.5	45	67.5	90	112.5	135	157.5	180	202.5	225	247.5	270	292.5	315	337.5	360
0	14465	14465	14465	14465	14465	14465	14465	14465	14465	14465	14465	14465	14465	14465	14465	14465	14465
1	14416	14516	14619	14684	14719	14737	14681	14612	14510	14412	14310	14229	14192	14201	14244	14319	14416
2	14366	14568	14761	14888	14967	14987	14898	14764	14565	14356	14152	13991	13920	13928	14013	14176	14366
3	14323	14623	14899	15090	15209	15224	15107	14908	14621	14302	13988	13742	13625	13645	13781	14033	14323
4	14284	14674	15029	15269	15413	15451	15318	15058	14677	14245	13822	13496	13332	13374	13548	13888	14284
5	14245	14727	15154	15435	15612	15660	15524	15215	14741	14182	13650	13242	13048	13076	13325	13749	14245
6	14209	14781	15270	15595	15797	15865	15726	15365	14814	14125	13477	12971	12736	12788	13096	13608	14209
7	14172	14833	15377	15734	15969	16046	15927	15526	14892	14065	13292	12719	12436	12511	12858	13461	14172
8	14132	14881	15480	15864	16128	16214	16127	15697	14972	14013	13114	12450	12136	12213	12620	13315	14132
9	14091	14925	15568	15975	16256	16392	16316	15874	15060	13963	12935	12185	11830	11938	12379	13175	14091
10	14053	14968	15650	16085	16377	16555	16497	16061	15151	13916	12762	11927	11538	11639	12140	13023	14053
11	14014	15014	15726	16178	16476	16712	16676	16238	15247	13867	12591	11663	11242	11348	11899	12872	14014
12	13975	15054	15797	16248	16564	16847	16854	16408	15346	13827	12420	11422	10958	11072	11655	12727	13975
13	13938	15107	15857	16314	16655	16984	17033	16600	15442	13788	12243	11171	10682	10788	11412	12577	13938
14	13903	15160	15919	16369	16725	17102	17196	16805	15552	13739	12075	10937	10420	10535	11172	12426	13903
15	13878	15200	15970	16409	16775	17198	17368	17000	15680	13694	11911	10718	10189	10282	10946	12278	13878
16	13850	15235	16028	16443	16816	17298	17544	17215	15823	13650	11747	10498	9957	10040	10725	12130	13850
17	13819	15278	16080	16468	16835	17373	17719	17437	15975	13618	11587	10292	9735	9821	10507	11989	13819
18	13796	15329	16123	16476	16847	17436	17892	17689	16140	13597	11433	10094	9534	9597	10293	11839	13796
19	13779	15388	16151	16474	16835	17496	18066	17938	16334	13578	11298	9910	9333	9401	10088	11694	13779
20	13750	15432	16180	16454	16806	17544	18249	18204	16539	13557	11160	9733	9147	9204	9892	11549	13750
21	13723	15461	16214	16418	16768	17590	18446	18482	16758	13550	11031	9556	8966	9013	9703	11394	13723
22	13695	15511	16222	16374	16726	17627	18646	18789	16975	13553	10911	9400	8785	8842	9531	11254	13695
23	13675	15562	16230	16323	16703	17672	18835	19116	17211	13562	10796	9245	8613	8662	9356	11103	13675
24	13659	15607	16243	16281	16673	17712	19031	19456	17461	13581	10682	9093	8434	8482	9185	10958	13659
25	13648	15649	16258	16242	16631	17745	19224	19808	17735	13600	10568	8951	8248	8302	9027	10815	13648
26	13628	15699	16273	16175	16564	17768	19428	20186	18054	13643	10470	8790	8065	8118	8870	10660	13628
27	13607	15750	16279	16103	16517	17802	19647	20581	18391	13713	10383	8647	7869	7942	8716	10523	13607
28	13575	15796	16259	16035	16478	17838	19878	20984	18785	13789	10312	8505	7672	7743	8565	10386	13575
29	13558	15861	16252	15969	16448	17884	20115	21372	19187	13884	10268	8364	7450	7548	8412	10263	13558
30	13545	15906	16237	15926	16425	17955	20368	21755	19584	14024	10255	8241	7235	7342	8272	10148	13545
31	13544	15950	16245	15861	16380	18049	20639	22141	19989	14170	10291	8130	7023	7134	8122	10032	13544
32	13524	15981	16245	15767	16339	18154	20934	22546	20381	14376	10358	8022	6786	6933	7983	9927	13524
33	13512	16034	16243	15664	16308	18276	21283	22940	20808	14635	10381	7860	6542	6711	7858	9835	13512
34	13499	16084	16242	15573	16295	18408	21659	23375	21254	14901	10267	7610	6266	6489	7730	9762	13499
35	13495	16146	16220	15503	16278	18504	22071	23818	21732	15070	10079	7342	5989	6250	7578	9702	13495
36	13505	16203	16191	15439	16232	18550	22478	24313	22237	15101	9854	7036	5721	6004	7422	9638	13505
37	13531	16272	16165	15385	16193	18565	22812	24866	22684	15023	9574	6730	5446	5766	7265	9544	13531
38	13568	16347	16140	15334	16153	18568	23157	25390	22976	14806	9254	6434	5197	5508	7100	9450	13568
39	13619	16464	16106	15289	16100	18586	23511	25949	23082	14534	8943	6134	4953	5263	6928	9336	13619
40	13671	16616	16095	15246	16055	18588	23801	26465	22920	14296	8699	5863	4730	5028	6753	9205	13671
41	13704	16818	16094	15208	16009	18579	23987	<b>26680</b>	22519	14120	8495	5600	4537	4798	6579	9087	13704
42	13678	16978	16074	15168	15969	18541	23960	26424	22080	14031	8305	5345	4356	4589	6394	8975	13678
43	13570	17063	16028	15148	15948	18456	23726	25682	21747	13997	8111	5130	4207	4400	6215	8864	13570
44	13461	16922	15961	15133	15934	18334	23386	24936	21603	13964	7917	4925	4071	4228	6029	8780	13461
45	13390	16743	15888	15154	15918	18200	23046	24611	21571	13944	7708	4748	3946	4077	5835	8684	13390
46	13342	16700	15819	15173	15909	18098	22677	24520	21581	13939	7489	4594	3840	3940	5637	8591	13342

47	13325	16711	15747	15192	15880	18032	22423	24476	21596	13928	7254	4444	3737	3823	5441	8508	13325
48	13331	16732	15708	15228	15842	18013	22298	24492	21585	13910	7013	4324	3650	3713	5242	8425	13331
49	13336	16799	15684	15267	15770	18000	22232	24517	21588	13867	6760	4203	3565	3611	5039	8342	13336
50	13335	16857	15688	15293	15651	18028	22239	24546	21605	13838	6510	4096	3492	3523	4846	8267	13335
51	13327	16929	15701	15301	15455	18059	22225	24572	21596	13788	6247	3998	3429	3436	4662	8186	13327
52	13337	17009	15733	15256	15163	18081	22256	24588	21566	13734	5988	3901	3372	3356	4485	8112	13337
53	13350	17090	15783	15153	14810	18050	22283	24643	21543	13645	5741	3817	3331	3280	4322	8023	13350
54	13384	17191	15845	14968	14336	17990	22341	24660	21476	13527	5505	3740	3300	3202	4168	7936	13384
55	13402	17293	15937	14730	13784	17838	22374	24676	21434	13397	5291	3664	3274	3131	4029	7849	13402
56	13433	17406	16032	14404	13121	17619	22445	24698	21370	13258	5101	3593	3243	3061	3909	7744	13433
57	13462	17532	16149	13974	12299	17282	22511	24696	21302	13086	4926	3525	3204	2993	3798	7649	13462
58	13494	17662	16270	13464	11382	16881	22577	24672	21192	12894	4769	3465	3143	2934	3690	7535	13494
59	13563	17796	16403	12828	10199	16356	22629	24675	21091	12673	4619	3405	3075	2881	3591	7410	13563
60	13632	17956	16523	12074	8850	15642	22662	24661	20969	12439	4481	3347	2999	2831	3501	7286	13632
61	13705	18127	16625	11126	7365	14787	22650	24629	20850	12163	4341	3289	2932	2779	3416	7137	13705
62	13790	18323	16675	9952	5827	13586	22617	24610	20700	11870	4202	3224	2867	2729	3331	6962	13790
63	13871	18478	16693	8661	4594	12194	22536	24530	20533	11563	4062	3159	2795	2681	3252	6752	13871
64	13959	18703	16647	7234	3749	10564	22389	24485	20349	11222	3932	3094	2725	2632	3175	6546	13959
65	14042	18903	16519	5753	2904	8545	22181	24404	20102	10855	3799	3010	2643	2584	3100	6326	14042
66	14136	19156	16297	4405	2060	6652	21872	24367	19776	10464	3670	2920	2551	2535	3024	6091	14136
67	14247	19416	15947	3245	1539	5133	21471	24269	19432	10031	3545	2810	2433	2473	2950	5847	14247
68	14376	19697	15436	2388	1214	3615	20944	24082	18980	9540	3411	2677	2297	2405	2879	5608	14376
69	14544	20031	14757	1739	1045	2106	20275	23831	18425	9011	3255	2526	2148	2317	2811	5378	14544
70	14738	20437	13859	1478	951	1435	19443	23540	17431	8426	3099	2341	1872	2205	2746	5134	14738
71	14973	20889	12746	1217	880	1134	18403	22896	15887	7791	2943	2141	1522	2070	2695	4894	14973
72	15151	21415	11394	956	809	990	17144	21839	13993	7119	2752	1907	1170	1908	2642	4657	15151
73	15236	21965	9880	848	742	879	15646	20245	11788	6428	2529	1673	818	1726	2570	4435	15236
74	15096	22565	8268	761	680	804	13946	18210	9577	5736	2287	1412	664	1401	2476	4221	15096
75	14638	23133	6666	684	626	735	11969	15692	7403	5006	2028	1074	555	1073	2358	4025	14638
76	13773	23513	5150	616	587	676	9884	12927	5564	4282	1754	776	493	744	2208	3834	13773
77	12397	23435	3807	557	544	620	7797	10153	4326	3597	1473	565	453	500	2010	3654	12397
78	10491	22453	2715	507	496	567	5916	7525	3087	2911	1008	431	424	395	1740	3420	10491
79	8373	20088	1908	466	453	525	4522	5608	1854	2227	527	359	401	341	1290	3157	8373
80	6296	16154	1537	438	408	487	3128	3691	1210	1718	352	308	377	299	838	2854	6296
81	4449	11287	1167	406	363	445	1757	1815	783	1308	302	271	348	260	386	2484	4449
82	2949	6769	797	360	321	390	1004	1056	517	990	258	239	302	228	302	2107	2949
83	1831	3576	656	306	284	328	652	652	355	695	218	212	246	200	242	1745	1831
84	1113	1876	552	264	248	281	486	475	257	267	178	188	207	174	199	1222	1113
85	659	1418	460	226	206	239	378	381	187	165	140	160	162	147	160	697	659
86	476	1001	376	192	165	198	295	306	138	124	101	127	123	114	122	171	476
87	298	584	295	147	115	141	218	232	98	91	66	80	77	74	84	114	298
88	119	392	199	91	67	80	127	150	62	58	30	32	33	38	48	77	119
89	48	179	82	31	18	20	38	39	28	27	7	2	2	3	15	36	48
90	20	30	12	3	3	7	15	20	22	25	7	2	1	2	11	20	20
91	19	21	9	2	2	6	14	19	22	27	8	2	1	2	12	21	19
92	19	20	9	2	2	5	13	18	23	29	9	2	1	2	15	23	19
93	20	18	8	2	2	5	12	17	24	30	11	2	1	2	17	26	20
94	21	18	7	2	2	4	11	16	25	32	13	2	1	2	19	28	21
95	23	17	7	2	2	4	10	15	26	33	14	2	1	2	22	31	23

96	25	17	7	2	2	3	10	15	26	34	17	2	1	3	25	33	25
97	27	17	6	2	2	3	9	15	27	35	19	3	1	4	27	36	27
98	29	17	6	3	2	3	9	15	28	35	21	3	1	5	29	38	29
99	31	17	6	3	2	3	8	15	29	35	22	4	2	6	32	40	31
100	32	17	6	3	3	3	8	15	30	35	24	5	2	8	33	41	32
101	33	17	6	3	3	3	7	15	30	35	26	6	3	10	35	42	33
102	34	18	6	4	3	4	7	15	30	35	27	7	4	12	37	43	34
103	36	18	6	4	3	4	6	15	30	35	28	8	5	14	38	43	36
104	36	19	7	4	4	4	6	16	31	35	29	10	6	16	39	44	36
105	37	19	7	4	4	4	6	16	31	36	30	11	7	18	40	45	37
106	39	21	7	4	4	4	6	17	32	37	31	13	8	20	41	47	39
107	40	21	8	5	4	4	6	17	33	38	31	14	10	22	41	48	40
108	42	22	8	5	5	4	7	18	33	39	31	16	11	23	42	49	42
109	43	23	8	5	5	4	7	18	34	40	30	17	12	25	42	49	43
110	44	24	9	5	5	4	7	18	35	40	30	18	14	26	42	50	44
111	44	24	9	5	5	4	7	18	34	40	30	20	16	27	42	50	44
112	45	25	10	6	5	5	7	18	33	40	30	20	17	28	43	50	45
113	45	25	10	6	5	5	7	17	33	40	30	21	18	29	43	50	45
114	45	25	11	6	5	5	7	17	34	40	30	22	19	30	43	50	45
115	46	25	11	6	5	5	8	16	34	37	30	22	21	30	44	49	46
116	46	24	12	7	5	5	8	15	33	33	30	22	22	30	45	45	46
117	46	22	12	7	5	5	8	14	32	30	31	22	22	30	46	42	46
118	46	22	13	7	6	6	9	14	30	31	31	23	23	31	47	43	46
119	45	23	13	7	6	6	9	15	29	32	32	23	24	31	48	47	45
120	45	26	14	7	6	6	9	16	29	35	32	23	25	32	48	53	45
121	48	28	14	8	6	6	9	17	31	37	31	24	26	32	48	55	48
122	52	29	14	8	6	6	9	17	33	38	30	24	27	33	48	56	52
123	54	30	14	8	7	6	9	17	34	38	29	24	27	33	47	56	54
124	55	30	14	8	7	6	9	17	34	38	28	25	28	34	47	56	55
125	54	30	14	9	7	6	9	17	33	39	27	26	28	36	46	56	54
126	52	30	15	9	7	7	9	17	33	40	27	26	29	36	45	54	52
127	51	30	14	10	7	7	9	17	32	37	27	27	29	37	44	52	51
128	49	30	15	10	8	7	9	17	31	36	27	26	29	37	43	51	49
129	48	29	15	10	8	7	9	17	31	35	26	26	29	36	41	49	48
130	47	29	15	10	8	7	9	17	30	35	26	26	29	36	39	48	47
131	46	28	14	10	8	8	10	17	30	34	25	26	29	35	37	46	46
132	45	28	14	10	10	8	10	17	29	33	25	26	29	34	36	45	45
133	44	27	14	10	9	8	10	16	29	32	24	26	29	33	34	44	44
134	43	27	14	10	9	8	10	16	28	31	23	25	29	32	32	43	43
135	42	27	14	10	9	8	10	16	27	30	23	25	29	32	31	42	42
136	41	27	13	11	10	9	10	16	26	29	22	25	29	32	29	42	41
137	40	27	13	11	10	9	9	16	25	27	20	24	29	32	28	41	40
138	40	27	13	11	11	9	9	16	25	26	18	24	29	32	27	39	40
139	39	26	12	11	11	9	9	16	23	24	17	25	28	31	26	38	39
140	37	25	11	11	11	9	8	16	22	23	16	25	28	31	24	36	37
141	35	25	11	11	11	10	8	16	21	22	16	25	28	29	23	34	35
142	34	24	11	12	11	10	8	16	20	21	16	25	28	28	22	33	34
143	32	23	10	11	12	10	8	16	19	21	16	25	27	27	21	31	32
144	30	22	10	12	12	10	8	16	18	21	17	25	27	26	21	30	30

145	30	22	10	12	12	10	9	16	18	21	17	25	27	26	21	29	30
146	31	21	11	12	13	11	9	17	20	21	18	25	26	25	21	28	31
147	32	21	11	12	13	11	9	17	22	21	19	25	26	25	21	27	32
148	31	21	12	12	13	11	9	17	22	21	21	24	26	25	22	26	31
149	31	20	13	13	13	12	10	17	22	21	22	24	26	24	22	25	31
150	30	20	14	13	13	12	11	17	22	21	23	24	25	24	23	24	30
151	28	19	15	13	13	12	12	17	21	20	23	23	25	24	24	23	28
152	27	18	16	14	14	12	12	16	20	19	23	22	25	24	25	23	27
153	26	18	17	14	14	13	13	16	20	19	22	22	24	24	26	22	26
154	24	17	17	14	14	13	13	16	19	19	22	21	23	23	26	21	24
155	23	17	18	15	14	14	13	16	19	19	21	21	22	23	26	20	23
156	22	16	18	15	14	14	13	17	19	19	20	21	21	22	26	19	22
157	21	16	18	15	14	14	13	17	18	19	20	20	21	21	26	18	21
158	21	16	19	15	14	14	13	17	18	19	19	20	20	21	26	18	21
159	20	15	19	15	14	14	13	18	18	19	19	20	20	20	25	17	20
160	20	15	19	15	14	15	13	19	17	19	18	20	20	20	25	17	20
161	19	15	19	15	15	15	14	19	17	18	17	20	20	20	24	17	19
162	19	15	19	15	15	15	14	20	17	18	16	20	20	20	24	17	19
163	19	15	19	15	16	15	14	20	16	18	16	20	20	20	24	16	19
164	18	15	20	15	16	15	14	21	16	18	15	21	20	19	23	16	18
165	18	15	20	16	17	15	15	22	16	18	15	22	20	19	23	16	18
166	18	15	20	16	17	16	15	22	15	18	16	22	20	19	22	16	18
167	20	15	21	16	18	17	16	23	15	18	16	23	21	19	23	17	20
168	21	15	23	17	18	18	17	24	15	17	16	26	21	20	25	17	21
169	20	16	25	18	19	18	18	25	15	17	16	28	22	21	26	17	20
170	20	16	25	19	20	19	19	26	15	17	16	28	22	21	27	17	20
171	19	16	26	19	20	20	20	26	15	17	16	28	23	21	27	17	19
172	19	16	26	19	20	20	20	26	15	18	16	28	23	22	27	17	19
173	19	16	26	20	20	20	20	25	15	18	16	28	23	22	27	17	19
174	19	16	26	20	20	20	21	25	15	18	16	27	23	22	27	16	19
175	19	16	26	20	20	20	20	25	15	17	15	27	23	22	27	16	19
176	19	16	26	20	20	20	20	25	15	17	15	27	22	22	26	16	19
177	18	15	26	20	20	20	20	24	14	17	15	26	21	22	26	15	18
178	17	15	26	20	20	20	20	24	14	17	14	26	21	21	25	15	17
179	17	15	26	20	20	20	20	24	13	16	13	25	20	20	25	14	17
180	16	16	16	16	16	16	16	16	16	16	16	16	16	16	16	16	16

**Luminaire Report Summary**

IESNA:LM-63-2002  
[TEST]  
[TESTDATE] 2015-12-23  
[TESTLAB] Standard-Tech Co. Ltd  
[ISSUEDATE] 2015-12-23 21:42:06  
[MANUFAC] SARIN Energ Inc.  
[LUMINAIRE] SES-SBN-4000-480 277V  
[\_LAMPPOSITION] 0,0  
[\_TOTALLUMINAIRELUMENS] 59595.5  
[OTHER] EVERFINE GO-R5000\_V2 SYSTEMGamma(deg) Fz(lm) Ft(lm) %Lum %Lamp0- 10  
1371.10 1371.10 2.30 2.3010- 20 3992.67 5363.77 9.00 9.0020- 30 6442.56 11806.33  
19.81 19.8130- 40 8833.26 20639.59 34.63 34.6340- 50 10381.02 31020.61 52.05  
52.0550- 60 11261.76 42282.37 70.95 70.9560- 70 10236.18 52518.56 88.12 88.1270-  
80 6258.88 58777.44 98.63 98.6380- 90 688.67 59466.11 99.78 99.7890-100 14.79  
59480.90 99.81 99.81100-110 21.00 59501.90 99.84 99.84110-120 23.79 59525.69 99.88  
99.88120-130 23.93 59549.63 99.92 99.92130-140 18.20 59567.83 99.95 99.95140-150  
12.33 59580.16 99.97 99.97150-160 8.70 59588.86 99.99 99.99160-170 5.17 59594.04  
100.00 100.00170-180 1.96 59595.99 100.00 100.00

FILE: CREATED USING ABSOLUTE PHOTOMETRY  
FILE: CANDELA MULTIPLIER: 1  
FILE: VERTICAL ANGLES: 181, HORIZONTAL ANGLES: 17  
FILE: COORDINATE SYSTEM: TYPE C  
FILE: UNIT OF MEASURE: METRIC  
FILE: BALLAST FACTOR: 1

Photometrics Pro 1.3.29 copyright 2003-2019 by jSolutions, Inc.  
Reported data calculated from manufacturer's data file, based on IES recommended methods.