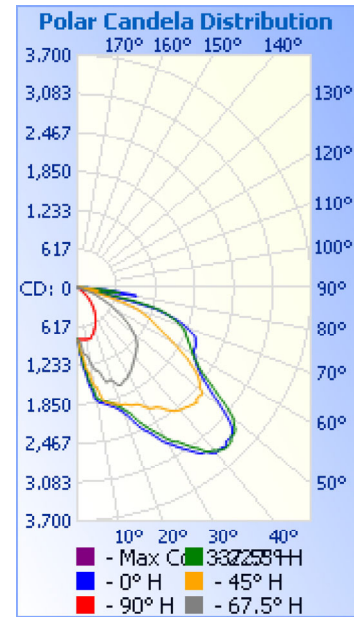


Photometrics Pro

Luminaire Photometric Report

Filename: Wall Pack WPBR 60W
Manufacturer: SARIN Energy Inc.
Lamp: SES-WPBR-5000-60
Lamp Output: 1 lamp, rated Lumens/lamp: 4301
Max Candela: 3,685.2 at Horizontal: 337.5°, Vertical: 43°
Input Wattage: 58.3
Luminous Opening: Point
Test Date: 2014-06-19
Test Lab: EVERFINE
Photometry : Type C
Nema Type: 6 X 5

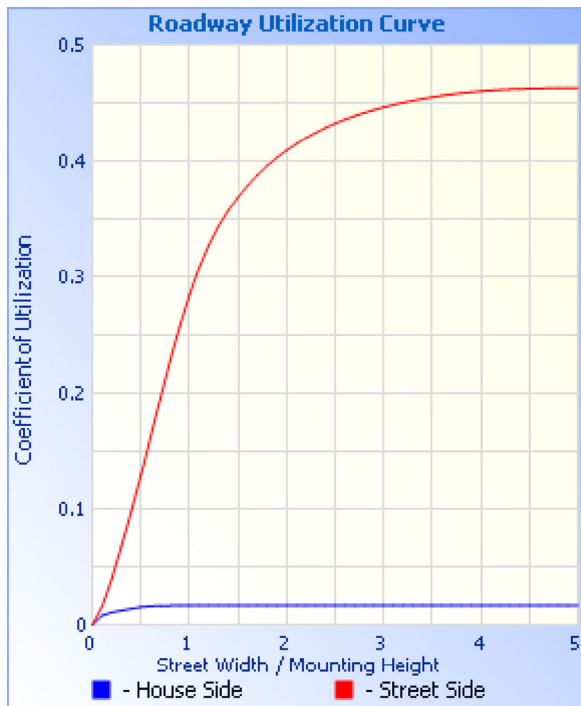
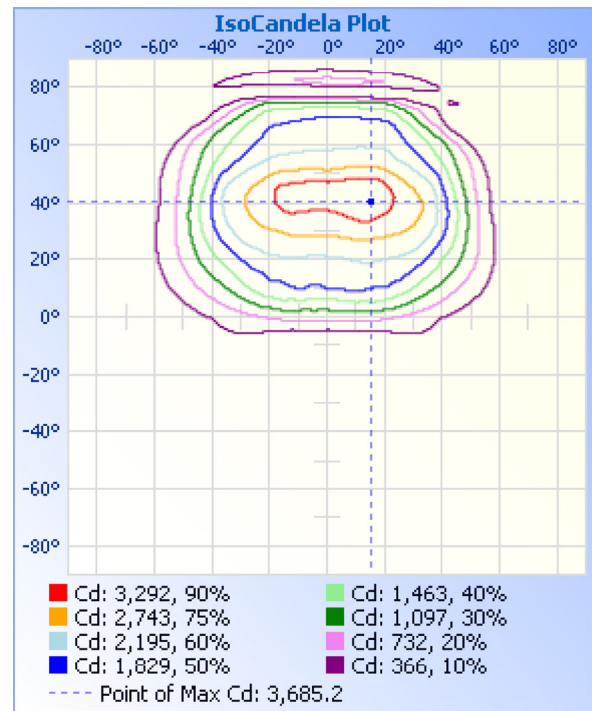
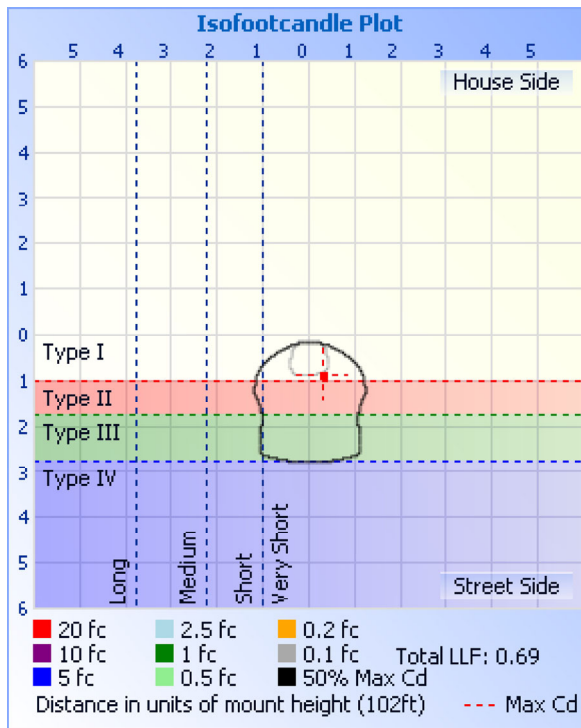


Roadway Summary		
Cutoff Classification:	NONCUTOFF	
Distribution:	TYPE IV, VERY SHORT	
Max Cd, 90 Deg Vert:	54.7	
Max Cd, 80 to <90 Deg:	944.6	
	Lumens	% Lamp
Downward Street Side:	4,130.0	96%
Downward House Side:	144.2	3.4%
Downward Total:	4,274.2	99.4%
Upward Street Side:	16.6	0.4%
Upward House Side:	10.2	0.2%
Upward Total:	26.8	0.6%
Total Lumens:	4,301.0	100%

Flood Summary				
	Efficiency	Lumens	Horizontal Spread	Vertical Spread
Field (10%):	94.6%	4,068.6	115	81.4
Beam (50%):	65.2%	2,803.0	82	59.3
Total:	100%	4,300.9		

Zonal Lumen Summary			
Zone	Lumens	% Lamp	% Luminaire
0-30	832.9	19.4%	19.4%
0-40	1,574.2	36.6%	36.6%
0-60	3,307.9	76.9%	76.9%
60-90	966.0	22.5%	22.5%
70-100	380.4	8.8%	8.8%
90-120	19.2	0.4%	0.4%
0-90	4,273.9	99.4%	99.4%
90-180	26.8	0.6%	0.6%
0-180	4,300.7	100%	100%

Lumens Per Zone					
Zone	Lumens	% Total	Zone	Lumens	% Total
0-10	78.4	1.8%	90-100	10.5	0.2%
10-20	264.6	6.2%	100-110	5.7	0.1%
20-30	489.9	11.4%	110-120	3.0	0.1%
30-40	741.3	17.2%	120-130	2.0	0%
40-50	926.4	21.5%	130-140	1.9	0%
50-60	807.3	18.8%	140-150	1.7	0%
60-70	596.1	13.9%	150-160	1.0	0%
70-80	268.2	6.2%	160-170	0.7	0%
80-90	101.7	2.4%	170-180	0.3	0%



Illuminance at a Distance

Center Beam fc	Beam Width
2.96 fc	19.0 ft 29.1 ft
0.74 fc	37.9 ft 57.9 ft
0.33 fc	57.0 ft 87.0 ft
0.19 fc	76.0 ft 116.0 ft
0.12 fc	94.9 ft 144.9 ft
0.08 fc	113.9 ft 174.0 ft

Vert. Spread: 59.3°
Horiz. Spread: 82.0°

Coefficients Of Utilization - Zonal Cavity Method

Effective Floor Cavity Reflectance: 20%

RCC %:	80				70				50				30				10				0			
RW %:	70	50	30	0	70	50	30	0	50	30	20	0	50	30	20	0	50	30	20	0	50	30	20	0
RCR: 0	1.19	1.19	1.19	1.19	1.16	1.16	1.16	.99	1.11	1.11	1.11	1.06	1.06	1.06	1.06	1.01	1.01	1.01	1.01	.99				
1	1.08	1.03	.98	.94	1.05	1.01	.96	.83	.96	.93	.90	.92	.89	.87	.88	.86	.86	.84	.84	.82				
2	.98	.89	.82	.76	.95	.87	.80	.68	.83	.78	.73	.80	.75	.71	.77	.73	.69	.67	.67	.67				
3	.88	.77	.69	.62	.86	.75	.67	.57	.72	.65	.60	.69	.64	.59	.67	.62	.58	.58	.58	.58				

4	.80	.68	.58	.51	.78	.66	.57	.48	.63	.56	.50	.61	.54	.49	.59	.53	.48	.46
5	.73	.60	.50	.43	.71	.58	.49	.41	.56	.48	.42	.54	.47	.42	.52	.46	.41	.39
6	.67	.53	.44	.37	.65	.52	.43	.35	.50	.42	.36	.48	.41	.36	.47	.40	.35	.33
7	.62	.48	.38	.32	.60	.47	.38	.31	.45	.37	.31	.43	.36	.31	.42	.36	.31	.29
8	.57	.43	.34	.28	.55	.42	.34	.27	.41	.33	.27	.39	.32	.27	.38	.32	.27	.25
9	.53	.39	.30	.25	.52	.38	.30	.24	.37	.30	.24	.36	.29	.24	.35	.29	.24	.22
10	.50	.36	.27	.22	.48	.35	.27	.21	.34	.27	.22	.33	.26	.21	.32	.26	.21	.19

Candela Table - Type C																	
	0	22.5	45	67.5	90	112.5	135	157.5	180	202.5	225	247.5	270	292.5	315	337.5	360
0	825	812	829	825	830	827	825	823	825	812	829	825	830	827	825	823	825
1	872	848	852	840	824	772	705	674	667	661	711	773	831	839	854	862	872
2	1049	1010	927	846	824	686	628	617	618	605	634	695	833	853	935	1025	1049
3	1092	1056	1048	871	826	639	608	506	473	504	613	647	838	889	1064	1079	1092
4	1249	1162	1075	939	827	628	487	413	413	410	497	629	839	966	1092	1190	1249
5	1319	1279	1145	1030	826	617	421	335	269	337	423	625	838	1053	1162	1321	1319
6	1432	1311	1288	1067	827	588	396	218	210	215	399	600	843	1087	1307	1357	1432
7	1561	1484	1325	1077	830	509	266	162	68	162	269	527	850	1106	1346	1528	1561
8	1623	1540	1371	1092	833	443	218	41	39	39	219	459	853	1132	1402	1586	1623
9	1792	1644	1514	1134	835	419	175	39	39	38	178	423	857	1187	1551	1698	1792
10	1831	1780	1583	1210	839	415	54	40	41	39	53	417	864	1274	1617	1823	1831
11	1860	1808	1611	1290	835	395	41	42	45	41	39	398	861	1349	1672	1862	1860
12	1877	1828	1737	1331	835	320	41	46	50	45	40	328	865	1381	1821	1911	1877
13	1887	1844	1846	1343	835	248	42	50	56	50	41	248	869	1392	1909	1920	1887
14	1913	1855	1872	1359	837	223	44	55	63	56	43	217	856	1424	1927	1929	1913
15	1934	1882	1897	1410	828	216	46	61	71	63	47	200	837	1502	1955	1955	1934
16	1957	1896	1917	1494	806	184	48	69	80	71	50	183	835	1596	1975	1976	1957
17	1978	1926	1926	1564	792	107	52	77	89	79	54	113	835	1618	2004	1991	1978
18	2018	1957	1939	1564	784	54	56	85	98	88	59	53	804	1628	2031	2034	2018
19	2054	1996	1956	1550	765	47	60	95	108	96	65	40	789	1656	2044	2075	2054
20	2101	2032	1976	1556	748	47	65	104	116	105	70	40	772	1675	2072	2125	2101
21	2162	2079	1991	1590	733	47	71	113	123	112	76	41	740	1707	2092	2165	2162
22	2233	2130	2000	1640	713	47	76	119	130	119	83	41	728	1765	2116	2219	2233
23	2325	2186	2017	1677	701	47	82	125	133	124	89	42	723	1785	2129	2277	2325
24	2417	2279	2044	1683	689	48	88	130	131	129	95	44	701	1768	2133	2341	2417
25	2489	2367	2065	1675	663	50	94	130	125	130	100	46	699	1744	2133	2423	2489
26	2538	2442	2069	1651	649	51	98	126	117	127	104	48	669	1740	2158	2532	2538
27	2606	2511	2080	1639	632	52	102	119	107	121	107	50	632	1756	2179	2623	2606
28	2696	2582	2111	1644	608	54	104	110	95	112	108	53	616	1765	2203	2684	2696
29	2781	2648	2152	1625	598	56	104	100	83	102	107	55	590	1755	2233	2744	2781
30	2851	2731	2204	1603	577	57	104	87	70	89	105	56	568	1728	2275	2839	2851
31	2898	2815	2235	1596	556	59	101	75	58	77	102	58	548	1726	2315	2945	2898
32	2969	2876	2257	1580	542	61	96	64	46	65	97	59	531	1713	2378	3032	2969
33	3033	2911	2268	1556	516	62	89	54	37	54	90	60	524	1676	2439	3119	3033
34	3098	2985	2294	1538	503	63	81	43	30	44	83	60	492	1658	2484	3205	3098
35	3162	3059	2337	1517	481	65	73	35	24	36	75	60	472	1642	2525	3298	3162
36	3237	3134	2399	1495	459	66	65	28	20	30	67	59	433	1635	2573	3371	3237
37	3291	3194	2447	1477	439	67	58	23	16	24	59	59	410	1622	2630	3384	3291
38	3298	3293	2492	1460	415	66	49	18	12	19	52	58	385	1611	2675	3469	3298
39	3372	3343	2518	1438	400	66	42	15	10	15	45	57	363	1588	2720	3542	3372
40	3419	3362	2536	1422	375	65	36	12	8	12	38	55	347	1548	2760	3577	3419
41	3412	3417	2548	1407	358	63	30	9	6	9	32	55	325	1545	2806	3595	3412
42	3415	3448	2557	1391	333	61	24	7	5	7	27	53	296	1497	2843	3654	3415
43	3447	3467	2584	1371	317	59	20	6	4	6	22	52	272	1477	2859	3685	3447
44	3391	3456	2596	1345	295	57	16	5	3	4	17	50	244	1429	2868	3671	3391
45	3400	3447	2608	1336	272	53	13	4	2	3	14	47	224	1450	2854	3643	3400
46	3397	3391	2631	1314	252	50	11	3	2	3	11	44	198	1402	2859	3622	3397

47	3360	3400	2585	1285	227	46	9	2	1	2	9	41	175	1369	2878	3609	3360
48	3293	3365	2579	1259	210	42	7	2	1	1	7	38	154	1362	2861	3561	3293
49	3162	3288	2597	1229	189	37	6	1	1	1	6	34	134	1309	2842	3502	3162
50	2997	3226	2583	1194	166	33	5	1	1	1	5	30	110	1277	2757	3448	2997
51	2856	3081	2490	1154	146	29	5	1	0	1	4	26	89	1237	2672	3324	2856
52	2701	2923	2462	1111	126	25	4	1	0	0	3	21	80	1185	2610	3173	2701
53	2586	2762	2413	1070	111	22	3	0	0	0	2	18	79	1126	2547	3008	2586
54	2468	2627	2353	1026	107	18	2	0	0	0	2	14	75	1067	2434	2860	2468
55	2385	2487	2270	977	102	15	2	1	0	0	1	11	66	994	2344	2702	2385
56	2308	2371	2167	922	99	13	1	1	1	0	1	9	54	943	2248	2533	2308
57	2258	2286	2086	872	93	10	1	1	1	1	1	7	49	867	2134	2433	2258
58	2209	2232	1962	812	85	9	1	1	1	0	0	6	44	791	2022	2316	2209
59	2172	2164	1863	752	76	7	0	1	1	1	0	5	39	708	1930	2281	2172
60	2146	2115	1753	698	68	6	0	1	1	1	0	4	35	639	1845	2255	2146
61	2109	2074	1661	652	61	5	0	1	1	1	0	3	32	567	1730	2202	2109
62	2093	2034	1576	602	54	4	0	1	1	1	0	2	29	507	1608	2155	2093
63	2096	1996	1505	554	48	3	0	1	1	1	0	2	25	433	1534	2111	2096
64	2088	1959	1428	502	43	2	0	1	1	1	0	1	21	368	1429	2087	2088
65	2067	1923	1359	447	37	2	0	1	1	1	0	1	17	311	1344	2063	2067
66	2049	1891	1300	399	32	1	0	1	1	1	0	1	14	265	1278	2040	2049
67	2032	1867	1246	363	28	1	0	1	1	1	0	1	12	231	1206	2022	2032
68	1985	1837	1174	337	24	1	0	1	1	1	0	0	11	183	1095	1985	1985
69	1920	1798	1102	312	20	0	0	1	1	1	0	0	10	127	967	1932	1920
70	1850	1747	1037	279	18	0	0	1	1	1	0	0	9	80	795	1862	1850
71	1777	1686	945	221	15	0	0	1	2	1	0	0	8	55	588	1780	1777
72	1681	1621	798	155	13	0	0	1	2	1	0	0	7	41	426	1713	1681
73	1548	1536	618	104	11	0	0	1	2	1	0	0	6	31	294	1612	1548
74	1414	1450	451	71	9	0	0	1	2	1	0	0	5	26	164	1470	1414
75	1280	1365	340	52	7	0	0	1	2	1	0	0	4	27	98	1328	1280
76	856	1156	222	42	6	0	0	2	2	1	0	0	4	29	142	1076	856
77	284	900	139	42	5	0	0	2	2	1	0	0	3	29	259	492	284
78	62	395	136	46	4	0	0	2	2	1	0	0	2	28	379	83	62
79	41	86	221	47	3	0	0	2	2	1	0	0	2	27	408	40	41
80	35	47	297	46	2	0	0	2	2	1	0	0	1	25	366	31	35
81	458	35	336	42	2	0	0	2	2	1	0	0	1	23	310	324	458
82	945	317	325	38	1	0	0	2	2	1	0	0	1	21	253	787	945
83	848	667	293	34	1	0	0	2	2	1	0	0	1	19	199	699	848
84	708	591	252	30	1	0	0	2	2	1	0	0	1	18	139	561	708
85	570	477	203	27	1	0	0	1	2	1	0	0	1	16	92	432	570
86	443	371	147	25	0	0	0	1	2	1	0	0	1	15	57	314	443
87	319	272	107	23	0	0	0	1	1	1	0	0	0	13	35	207	319
88	191	173	78	21	0	0	0	1	1	1	0	0	0	12	25	109	191
89	62	94	64	19	0	0	0	1	1	1	0	0	0	11	25	34	62
90	36	41	55	17	0	0	0	1	1	1	0	0	0	10	23	31	36
91	34	38	48	15	0	0	0	1	1	1	0	0	0	9	21	29	34
92	32	34	42	13	0	0	1	2	2	2	1	0	0	8	19	27	32
93	31	32	37	11	0	0	1	2	2	2	1	0	0	7	18	26	31
94	31	29	33	10	0	0	1	3	2	2	1	0	0	6	16	24	31
95	30	27	29	8	0	0	1	3	3	3	1	0	0	6	15	23	30

96	30	26	26	7	0	0	1	3	3	3	1	0	0	5	14	22	30
97	29	24	23	6	0	0	1	3	3	3	1	0	0	4	13	21	29
98	28	22	21	5	0	1	2	4	3	3	1	0	0	3	12	20	28
99	26	21	19	4	0	1	2	4	4	3	1	0	0	3	11	19	26
100	25	19	17	3	0	1	2	4	4	3	2	0	0	2	10	18	25
101	24	18	15	3	0	1	2	4	4	3	2	0	0	2	10	17	24
102	23	17	14	2	0	1	2	4	4	3	2	1	0	2	9	16	23
103	22	16	12	2	0	1	2	4	4	3	2	0	0	1	8	15	22
104	21	15	11	1	0	1	2	4	5	3	2	1	0	1	8	15	21
105	20	14	10	1	0	1	2	4	5	3	3	0	0	0	8	14	20
106	19	13	9	0	0	1	3	4	5	4	3	1	0	0	7	13	19
107	18	12	8	0	0	1	3	4	5	4	3	1	0	0	7	12	18
108	17	11	7	0	0	1	3	5	5	4	3	1	0	0	6	11	17
109	16	10	6	0	0	1	3	5	5	5	3	1	0	0	6	10	16
110	15	9	5	0	0	1	3	5	5	5	3	1	0	0	5	9	15
111	13	9	4	0	0	1	3	5	5	5	3	1	0	0	4	9	13
112	12	8	3	0	0	1	3	5	6	5	3	1	0	0	4	8	12
113	10	7	3	0	0	2	3	5	6	5	3	1	0	0	3	7	10
114	7	6	2	0	0	2	3	5	6	5	3	1	0	0	2	6	7
115	3	5	2	0	0	2	3	5	6	5	3	1	0	0	2	6	3
116	2	4	1	0	0	2	3	5	5	5	3	1	0	0	1	5	2
117	3	4	1	0	0	2	4	5	5	5	3	1	0	0	1	4	3
118	4	3	0	0	0	2	4	5	6	5	3	2	0	0	1	4	4
119	4	3	0	0	0	2	4	5	6	5	3	2	0	0	0	3	4
120	4	2	0	0	1	2	4	6	6	5	3	2	0	0	0	3	4
121	3	2	0	0	1	2	4	6	6	5	3	2	0	0	0	2	3
122	3	2	0	0	1	2	4	6	6	5	3	2	0	0	0	2	3
123	2	2	0	0	1	2	4	6	6	5	4	2	1	0	0	2	2
124	2	1	0	0	1	2	4	6	6	5	4	2	1	0	0	1	2
125	2	1	0	0	1	2	5	6	6	5	4	2	1	0	0	1	2
126	1	1	0	0	1	2	5	6	6	5	4	2	1	0	0	1	1
127	1	1	0	0	1	2	5	6	6	5	4	2	1	0	0	1	1
128	1	0	0	0	1	3	5	6	6	5	4	2	1	0	0	1	1
129	1	0	0	0	1	3	5	6	6	5	4	2	1	0	0	1	1
130	1	0	0	0	1	3	5	6	6	5	4	2	1	0	0	1	1
131	1	0	0	0	1	3	5	6	6	6	5	2	1	0	0	1	1
132	1	0	0	0	1	3	6	6	7	6	5	2	1	0	0	1	1
133	1	0	0	0	1	3	6	6	7	6	5	2	1	0	0	1	1
134	1	0	0	0	2	3	6	7	7	6	5	3	1	0	1	1	1
135	1	0	0	0	2	4	6	7	7	6	5	3	1	0	0	1	1
136	1	0	0	0	2	4	6	7	7	7	5	3	1	0	0	1	1
137	0	0	0	0	2	4	6	7	7	7	5	3	1	0	0	0	0
138	0	0	0	0	2	4	6	7	7	7	5	3	1	0	0	0	0
139	1	0	0	0	2	4	5	7	8	7	5	3	1	0	0	0	1
140	0	0	0	0	2	4	5	7	8	7	5	3	1	0	0	0	0
141	0	0	0	0	2	4	5	7	8	7	5	3	1	0	0	0	0
142	0	0	0	0	2	4	5	7	8	7	5	3	1	0	0	0	0
143	0	0	0	0	2	4	5	7	8	7	5	3	1	0	0	0	0
144	0	0	0	0	2	4	5	7	7	7	5	3	1	0	0	0	0

145	0	0	0	0	2	4	5	7	7	6	5	3	1	0	0	0	0
146	0	0	0	0	2	4	5	7	7	6	5	3	1	0	0	0	0
147	0	0	0	0	2	4	5	7	7	6	5	3	1	0	0	0	0
148	0	0	0	0	2	4	5	6	7	6	5	3	2	0	0	0	0
149	0	0	0	0	2	4	5	6	7	6	5	3	2	0	0	0	0
150	0	0	0	0	2	4	5	6	6	5	5	3	2	0	0	0	0
151	0	0	0	0	2	4	5	5	6	5	4	3	2	1	0	0	0
152	0	0	0	0	3	3	5	5	5	5	4	3	2	1	0	0	0
153	0	0	0	0	3	3	5	5	5	5	4	3	2	1	0	0	0
154	0	0	0	0	3	3	5	5	5	4	4	3	2	1	0	0	0
155	0	0	0	0	3	3	5	5	5	4	4	3	2	1	0	0	0
156	0	0	0	0	3	3	4	5	5	4	4	3	2	1	0	0	0
157	0	0	0	1	3	3	4	5	5	4	4	3	2	1	0	0	0
158	0	0	0	1	3	3	4	5	5	4	4	3	2	1	0	0	0
159	0	0	0	1	3	3	4	4	5	4	4	3	2	1	0	0	0
160	0	0	0	1	3	3	4	4	4	4	4	3	2	1	0	0	0
161	0	0	0	1	3	3	4	4	4	4	3	3	2	1	1	0	0
162	0	0	0	1	3	3	4	4	4	4	3	3	2	1	1	0	0
163	0	0	0	1	3	3	4	4	4	4	3	3	2	2	1	0	0
164	0	0	0	1	3	3	4	4	4	4	3	3	3	2	1	0	0
165	0	0	1	1	3	3	4	4	4	4	4	3	3	2	1	0	0
166	0	0	1	1	3	3	4	4	4	4	4	3	3	2	1	1	0
167	0	0	1	1	3	3	4	5	5	4	4	3	3	2	1	1	0
168	1	1	1	1	3	3	4	5	5	4	4	4	3	2	2	1	1
169	1	1	1	1	3	3	4	5	5	4	4	4	3	2	2	1	1
170	1	1	1	1	3	3	4	4	5	4	4	4	3	2	2	1	1
171	1	1	1	1	3	3	4	4	4	4	4	4	3	2	2	1	1
172	1	1	1	2	3	3	4	4	4	4	3	4	3	2	2	2	1
173	2	1	2	2	3	3	4	4	4	4	3	3	3	2	2	2	2
174	2	1	2	2	3	3	4	4	4	4	3	3	3	3	2	2	2
175	2	2	2	2	3	3	4	4	4	4	3	3	3	3	3	2	2
176	2	2	2	2	3	3	3	4	3	3	3	3	3	3	3	2	2
177	2	2	2	2	3	3	3	4	3	3	3	3	3	3	3	2	2
178	2	2	2	2	3	3	3	3	3	3	2	3	3	3	3	2	2
179	2	2	2	2	3	3	3	3	3	3	2	3	3	3	3	2	2
180	3	3	3	3	3	3	3	3	3	3	3	3	3	3	3	3	3

Luminaire Report Summary

IESNA:LM-63-2002
[TEST]
[TESTDATE] 2014-06-19
[TESTLAB] EVERFINE
[ISSUE DATE] 2014-06-19 11:24:10
[MANUFAC] SARIN Energy Inc.
[LAMP] SES-WPBR-5000-60
[_TOTALLUMINAIRELUMENS] 4300.7
[_LAMPPOSITION] 0,0
[OTHER] EVERFINE GO-R5000_V2 SYSTEM
FILE: CANDELA MULTIPLIER: 1
FILE: VERTICAL ANGLES: 181, HORIZONTAL ANGLES: 17
FILE: COORDINATE SYSTEM: TYPE C
FILE: UNIT OF MEASURE: METRIC
FILE: BALLAST FACTOR: 1

Photometrics Pro 1.3.29 copyright 2003-2019 by jSolutions, Inc.
Reported data calculated from manufacturer's data file, based on IES recommended methods.