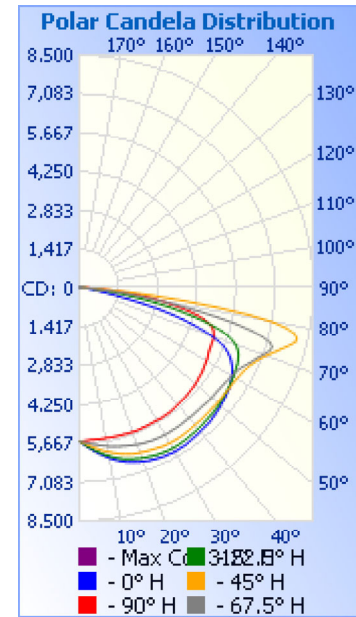


# Photometrics Pro

## Luminaire Photometric Report

**Filename:** Shoebox SB7 200W T4 - 480V  
**Manufacturer:** SARIN Energy Inc  
**Luminaire:** SES-SB7-4000-200-T4-480V  
**Lamp Output:** 1 lamp, rated Lumens/lamp: 25214.2  
**Max Candela:** 8,408.2 at Horizontal: 315°, Vertical: 76°  
**Input Wattage:** 199.16  
**Luminous Opening:** Point  
**Test Lab:** Shenzhen Belling Test Laboratory  
**Photometry :** Type C  
**Nema Type:** 7 X 7



### Roadway Summary

Cutoff Classification:	NONCUTOFF	
Distribution:	TYPE IV, MEDIUM	
Max Cd, 90 Deg Vert:	67.3	
Max Cd, 80 to <90 Deg:	7,208.5	
	Lumens	% Lamp
Downward Street Side:	16,997.7	67.4%
Downward House Side:	8,027.6	31.8%
Downward Total:	25,025.4	99.3%
Upward Street Side:	90.0	0.4%
Upward House Side:	98.8	0.4%
Upward Total:	188.8	0.7%
<b>Total Lumens:</b>	<b>25,214.2</b>	<b>100%</b>

### Flood Summary

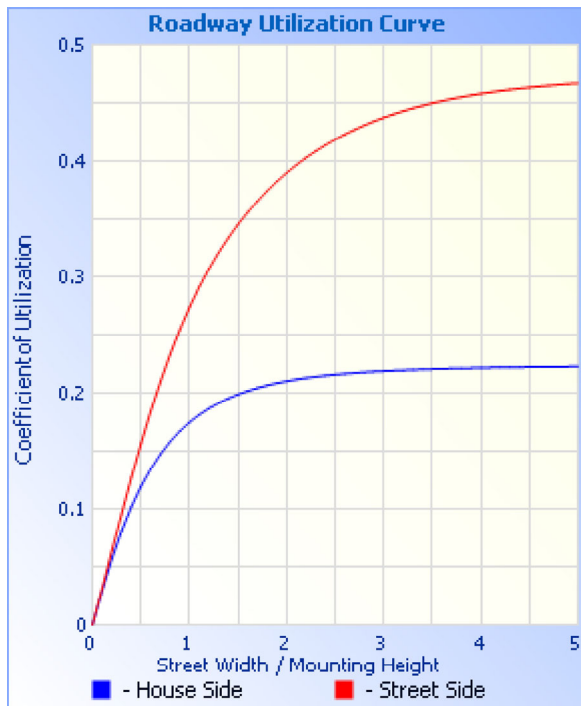
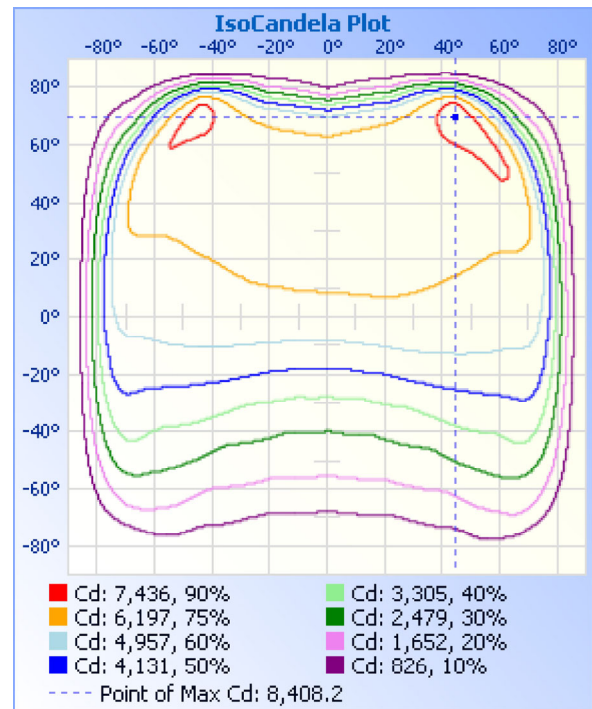
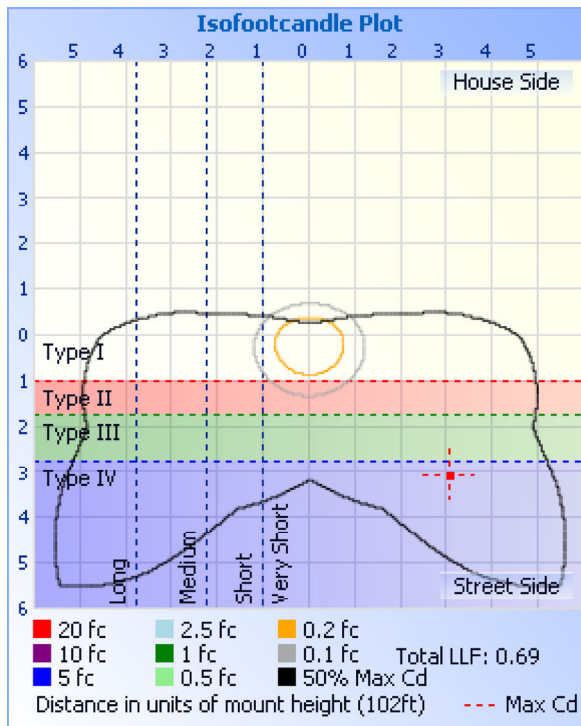
	Efficiency	Lumens	Horizontal Spread	Vertical Spread
Field (10%):	98%	24,707.3	152.6	158.9
Beam (50%):	78%	19,655.4	121.7	104.6
<b>Total:</b>	<b>99.9%</b>	<b>25,198.4</b>		

### Zonal Lumen Summary

Zone	Lumens	% Lamp	% Luminaire
0-30	4,590.9	18.2%	18.2%
0-40	7,837.5	31.1%	31.1%
0-60	15,845.7	62.8%	62.8%
60-90	9,179.0	36.4%	36.4%
70-100	4,839.5	19.2%	19.2%
90-120	105.4	0.4%	0.4%
0-90	25,024.7	99.2%	99.3%
90-180	188.8	0.7%	0.7%
0-180	25,213.4	100%	100%

### Lumens Per Zone

Zone	Lumens	% Total	Zone	Lumens	% Total
0-10	532.8	2.1%	90-100	42.3	0.2%
10-20	1,566.5	6.2%	100-110	33.6	0.1%
20-30	2,491.6	9.9%	110-120	29.5	0.1%
30-40	3,246.5	12.9%	120-130	24.8	0.1%
40-50	3,813.6	15.1%	130-140	19.7	0.1%
50-60	4,194.6	16.6%	140-150	16.5	0.1%
60-70	4,381.8	17.4%	150-160	12.3	0%
70-80	3,842.3	15.2%	160-170	7.6	0%
80-90	954.9	3.8%	170-180	2.5	0%



**Illuminance at a Distance**

	Center Beam fc	Beam Width	
16.7ft	20.0 fc	43.2 ft	59.9 ft
33.3ft	5.04 fc	86.2 ft	119.5 ft
50.0ft	2.24 fc	129.4 ft	179.4 ft
66.7ft	1.26 fc	172.6 ft	239.3 ft
83.3ft	0.81 fc	215.6 ft	298.8 ft
100.0ft	0.56 fc	258.8 ft	358.7 ft

Vert. Spread: 104.6°  
 Horiz. Spread: 121.7°

**Coefficients Of Utilization - Zonal Cavity Method**

Effective Floor Cavity Reflectance: 20%

RCC %:	80				70				50				30				10				0
RW %:	70	50	30	0	70	50	30	0	50	30	20	50	30	20	50	30	20	50	30	20	0
RCR: 0	1.19	1.19	1.19	1.19	1.16	1.16	1.16	.99	1.11	1.11	1.11	1.06	1.06	1.06	1.01	1.01	1.01	1.01	1.01	1.01	.99
1	1.06	1.00	.94	.89	1.03	.97	.92	.78	.93	.89	.85	.89	.85	.82	.85	.82	.79	.85	.82	.79	.77
2	.94	.84	.76	.69	.91	.82	.74	.62	.78	.72	.66	.74	.69	.64	.71	.67	.63	.71	.67	.63	.60
3	.84	.72	.62	.54	.82	.70	.61	.50	.67	.59	.53	.64	.57	.52	.61	.55	.51	.61	.55	.51	.48

4	.76	.62	.52	.45	.74	.61	.51	.42	.58	.50	.43	.56	.48	.43	.53	.47	.42	.39
5	.70	.55	.45	.37	.67	.54	.44	.35	.51	.43	.37	.49	.42	.36	.47	.41	.35	.33
6	.64	.49	.39	.32	.62	.48	.39	.30	.46	.38	.31	.44	.37	.31	.42	.36	.31	.28
7	.59	.44	.34	.28	.57	.43	.34	.26	.41	.33	.27	.40	.32	.27	.38	.32	.27	.24
8	.55	.40	.31	.24	.53	.39	.30	.23	.38	.30	.24	.36	.29	.24	.35	.28	.24	.21
9	.51	.37	.28	.22	.49	.36	.27	.21	.35	.27	.21	.33	.26	.21	.32	.26	.21	.19
10	.48	.34	.25	.19	.46	.33	.25	.19	.32	.24	.19	.31	.24	.19	.30	.23	.19	.17

## Candela Table - Type C

	0	22.5	45	67.5	90	112.5	135	157.5	180	202.5	225	247.5	270	292.5	315	337.5	360
0	5590	5590	5590	5590	5590	5590	5590	5590	5590	5590	5590	5590	5590	5590	5590	5590	5590
1	5668	5659	5633	5619	5590	5562	5530	5519	5517	5520	5535	5568	5589	5622	5642	5665	5668
2	5743	5733	5678	5639	5583	5529	5470	5446	5449	5453	5491	5540	5596	5662	5705	5733	5743
3	5815	5795	5730	5663	5577	5500	5419	5370	5371	5383	5439	5517	5602	5696	5763	5796	5815
4	5890	5859	5782	5694	5561	5466	5354	5294	5295	5315	5387	5490	5613	5728	5814	5857	5890
5	5963	5922	5832	5719	5559	5431	5300	5223	5218	5233	5338	5464	5618	5760	5871	5921	5963
6	6032	5989	5885	5746	5562	5402	5242	5144	5131	5161	5274	5439	5628	5797	5925	5988	6032
7	6101	6042	5931	5774	5562	5366	5187	5074	5052	5086	5219	5415	5628	5838	5977	6061	6101
8	6166	6111	5980	5801	5565	5339	5130	4992	4964	5012	5170	5399	5641	5873	6031	6122	6166
9	6229	6169	6024	5825	5565	5309	5062	4910	4879	4927	5115	5375	5647	5910	6081	6185	6229
10	6298	6222	6073	5858	5561	5274	5008	4831	4790	4851	5060	5358	5654	5944	6131	6242	6298
11	6360	6278	6110	5889	5568	5241	4946	4743	4704	4777	5006	5333	5661	5982	6176	6294	6360
12	6415	6327	6156	5909	5570	5214	4891	4665	4619	4692	4953	5304	5669	6009	6222	6347	6415
13	6472	6371	6192	5931	5576	5187	4835	4586	4536	4614	4892	5279	5676	6044	6274	6400	6472
14	6519	6415	6236	5954	5577	5160	4778	4506	4445	4535	4840	5257	5688	6074	6325	6447	6519
15	6562	6460	6273	5974	5579	5138	4716	4422	4364	4463	4780	5234	5700	6103	6359	6490	6562
16	6601	6492	6303	5998	5584	5106	4652	4343	4265	4381	4722	5211	5704	6129	6395	6527	6601
17	6638	6520	6332	6015	5581	5083	4593	4251	4179	4300	4667	5185	5709	6157	6431	6563	6638
18	6668	6549	6360	6037	5592	5057	4537	4177	4092	4219	4603	5158	5718	6188	6460	6600	6668
19	6704	6579	6376	6059	5596	5029	4471	4102	4005	4140	4544	5133	5726	6217	6485	6628	6704
20	6736	6602	6397	6078	5604	4998	4409	4023	3918	4060	4490	5110	5735	6239	6512	6661	6736
21	6761	6627	6410	6098	5611	4976	4347	3940	3840	3979	4434	5092	5747	6272	6538	6685	6761
22	6787	6645	6431	6117	5610	4946	4287	3865	3751	3901	4383	5071	5758	6295	6565	6714	6787
23	6808	6669	6445	6131	5608	4921	4234	3777	3656	3818	4324	5042	5763	6322	6579	6740	6808
24	6826	6686	6459	6140	5601	4890	4174	3702	3574	3747	4259	5019	5765	6343	6597	6755	6826
25	6843	6706	6475	6161	5600	4861	4110	3618	3500	3665	4202	5001	5773	6359	6621	6775	6843
26	6863	6718	6491	6170	5601	4833	4061	3555	3409	3587	4142	4977	5771	6372	6633	6793	6863
27	6877	6731	6507	6175	5597	4806	4001	3466	3332	3513	4084	4952	5769	6388	6646	6803	6877
28	6882	6746	6528	6186	5596	4779	3944	3393	3255	3441	4028	4922	5768	6398	6660	6815	6882
29	6892	6750	6539	6193	5597	4754	3881	3324	3168	3367	3961	4894	5763	6405	6672	6822	6892
30	6909	6754	6540	6194	5600	4720	3822	3255	3100	3295	3901	4868	5762	6418	6685	6828	6909
31	6907	6757	6554	6199	5601	4691	3758	3183	3019	3217	3847	4846	5772	6427	6704	6836	6907
32	6900	6760	6556	6204	5612	4662	3705	3119	2949	3146	3788	4816	5762	6431	6706	6833	6900
33	6902	6757	6557	6201	5608	4635	3648	3044	2879	3080	3737	4794	5762	6439	6711	6845	6902
34	6902	6752	6561	6207	5610	4611	3587	2972	2806	3013	3674	4764	5756	6436	6716	6840	6902
35	6891	6749	6558	6205	5608	4578	3524	2910	2742	2949	3612	4726	5755	6438	6717	6837	6891
36	6881	6745	6549	6205	5604	4544	3472	2852	2680	2882	3554	4700	5755	6443	6721	6825	6881
37	6869	6734	6551	6205	5594	4516	3411	2778	2616	2813	3497	4667	5756	6450	6719	6835	6869
38	6860	6729	6551	6204	5589	4482	3354	2720	2552	2748	3439	4627	5752	6452	6717	6821	6860
39	6859	6718	6546	6203	5577	4453	3298	2666	2495	2693	3383	4590	5747	6449	6714	6818	6859
40	6844	6716	6540	6199	5563	4421	3243	2598	2434	2632	3317	4552	5742	6441	6719	6806	6844
41	6837	6710	6533	6208	5557	4385	3183	2543	2374	2576	3260	4523	5741	6446	6714	6798	6837
42	6831	6706	6534	6211	5551	4354	3125	2478	2316	2513	3199	4483	5734	6450	6710	6796	6831
43	6819	6688	6536	6211	5547	4317	3066	2424	2257	2458	3146	4455	5732	6459	6708	6787	6819
44	6813	6687	6532	6214	5540	4281	3018	2375	2210	2405	3091	4416	5723	6462	6705	6784	6813
45	6802	6674	6529	6218	5535	4249	2954	2327	2159	2350	3033	4376	5715	6462	6706	6775	6802
46	6781	6667	6534	6221	5519	4206	2901	2267	2102	2293	2982	4340	5707	6472	6698	6771	6781

47	6767	6664	6532	6235	5509	4159	2840	2219	2053	2236	2924	4308	5701	6478	6697	6765	6767
48	6747	6656	6536	6246	5500	4130	2785	2158	2007	2186	2862	4259	5694	6486	6714	6762	6747
49	6726	6646	6544	6256	5492	4091	2731	2107	1950	2134	2804	4212	5680	6493	6716	6757	6726
50	6705	6634	6552	6258	5489	4048	2676	2058	1905	2077	2755	4168	5661	6503	6716	6742	6705
51	6682	6614	6546	6268	5475	4005	2621	2014	1849	2032	2699	4126	5648	6507	6721	6718	6682
52	6664	6598	6547	6271	5460	3949	2567	1955	1804	1983	2644	4080	5633	6516	6722	6705	6664
53	6640	6579	6546	6275	5446	3909	2509	1909	1754	1928	2596	4037	5613	6528	6733	6691	6640
54	6612	6562	6553	6289	5435	3861	2456	1857	1701	1875	2527	3986	5605	6534	6735	6680	6612
55	6589	6544	6558	6298	5425	3807	2408	1801	1648	1822	2473	3937	5590	6549	6746	6663	6589
56	6570	6531	6571	6320	5412	3758	2348	1747	1594	1777	2420	3886	5578	6559	6756	6640	6570
57	6537	6525	6570	6329	5387	3707	2287	1694	1535	1713	2360	3836	5560	6579	6766	6632	6537
58	6496	6506	6583	6355	5368	3654	2236	1646	1488	1659	2304	3786	5541	6596	6779	6621	6496
59	6463	6489	6599	6378	5356	3593	2177	1583	1427	1609	2250	3725	5520	6623	6798	6617	6463
60	6413	6473	6616	6409	5335	3532	2114	1529	1373	1547	2189	3668	5499	6651	6825	6600	6413
61	6361	6453	6643	6445	5321	3471	2061	1472	1315	1485	2128	3596	5481	6682	6850	6578	6361
62	6304	6431	6672	6478	5297	3408	1997	1406	1253	1421	2062	3533	5466	6729	6884	6548	6304
63	6232	6409	6703	6536	5269	3342	1941	1346	1186	1363	2009	3473	5451	6783	6924	6530	6232
64	6155	6393	6749	6593	5256	3283	1866	1283	1127	1297	1935	3397	5440	6849	6980	6514	6155
65	6066	6364	6802	6680	5240	3203	1799	1217	1045	1231	1869	3320	5431	6920	7046	6487	6066
66	5949	6325	6861	6766	5236	3136	1736	1149	940	1169	1803	3247	5430	7004	7119	6443	5949
67	5820	6295	6939	6854	5227	3073	1672	1076	854	1098	1730	3176	5423	7086	7193	6402	5820
68	5653	6230	7020	6924	5228	3002	1592	989	779	1009	1659	3106	5409	7170	7295	6346	5653
69	5410	6155	7118	7017	5229	2929	1516	886	716	918	1580	3035	5390	7256	7410	6272	5410
70	5112	6048	7242	7120	5208	2853	1451	809	649	840	1516	2959	5344	7368	7543	6158	5112
71	4779	5899	7380	7232	5171	2785	1371	720	599	750	1425	2882	5294	7493	7683	6019	4779
72	4387	5702	7524	7324	5137	2707	1290	659	550	678	1349	2801	5216	7565	7829	5809	4387
73	3946	5449	7671	7337	5079	2623	1209	594	502	616	1268	2722	5111	7554	7978	5527	3946
74	3519	5107	7833	7208	4989	2530	1136	546	461	551	1188	2616	4949	7405	8147	5211	3519
75	3005	4726	7990	6905	4839	2421	1059	476	424	506	1107	2498	4738	7041	8302	4825	3005
76	2399	4264	8119	6462	4662	2286	965	444	389	460	1016	2375	4447	6569	8408	4360	2399
77	1834	3798	8131	5878	4409	2149	867	400	362	405	923	2239	4108	5958	8386	3834	1834
78	1432	3352	7984	5165	4092	2005	768	363	333	368	826	2116	3737	5209	8201	3352	1432
79	1115	2803	7673	4432	3750	1881	671	323	302	337	721	1990	3335	4454	7782	2835	1115
80	847	2321	7154	3629	3354	1746	565	293	272	301	622	1871	2958	3623	7209	2281	847
81	664	1847	6242	2936	2977	1579	472	255	244	262	527	1749	2532	2914	6246	1838	664
82	515	1478	5044	2306	2598	1351	373	226	223	233	420	1573	2143	2295	5014	1456	515
83	413	1172	3766	1755	2210	1002	273	188	190	205	324	1278	1722	1764	3693	1159	413
84	328	892	2672	1235	1765	664	212	165	164	174	239	919	1302	1291	2583	886	328
85	243	624	1849	783	1287	416	161	138	135	148	184	596	941	873	1743	626	243
86	166	396	1083	434	881	227	109	112	113	117	128	359	593	521	1136	392	166
87	90	172	440	219	543	133	68	70	83	92	106	192	286	270	559	193	90
88	58	74	107	95	258	86	59	56	65	69	92	102	114	138	125	68	58
89	50	54	81	61	75	59	46	36	37	42	75	69	49	61	78	56	50
90	51	50	61	57	48	40	33	26	32	37	51	57	38	67	64	51	51
91	38	53	72	56	50	43	32	30	33	31	50	44	39	55	55	49	38
92	43	41	60	38	44	46	27	33	27	33	51	52	33	47	53	52	43
93	40	50	59	37	43	43	34	27	34	39	46	38	29	49	51	41	40
94	44	40	46	43	37	41	21	26	28	35	46	45	33	43	39	44	44
95	37	48	45	35	13	38	27	34	32	34	51	33	35	39	35	43	37

96	38	34	52	44	31	42	32	21	31	36	55	41	28	37	21	43	38
97	31	43	50	32	31	34	31	28	15	27	44	43	27	42	31	37	31
98	36	37	46	35	32	42	28	32	29	34	51	46	28	40	31	36	36
99	34	41	44	34	24	41	28	32	35	30	51	41	28	36	30	33	34
100	37	29	44	31	30	40	33	33	32	32	45	39	25	34	26	36	37
101	36	37	43	37	30	39	26	28	32	36	43	34	28	36	26	27	36
102	32	39	43	30	33	38	30	24	34	30	46	48	27	31	25	37	32
103	34	34	37	33	21	33	32	27	27	30	49	39	21	27	23	31	34
104	26	33	42	36	29	35	31	22	27	31	52	39	25	36	27	34	26
105	31	33	38	33	28	39	32	32	20	37	46	29	25	26	23	21	31
106	33	20	37	31	26	35	24	32	31	31	45	41	25	29	23	30	33
107	27	31	37	32	22	34	29	33	34	32	38	43	22	26	19	24	27
108	32	24	36	33	29	34	29	30	39	34	37	36	19	30	18	26	32
109	34	25	34	35	31	37	30	29	35	18	48	39	22	26	21	29	34
110	32	26	37	26	29	37	24	27	43	36	45	31	23	21	19	35	32
111	42	23	39	28	27	39	37	32	34	27	46	39	16	24	19	24	42
112	37	21	34	28	26	38	29	27	41	26	47	37	25	22	21	25	37
113	38	27	31	21	28	35	31	19	39	35	44	37	18	28	23	27	38
114	36	25	34	25	22	35	37	27	38	33	46	41	16	24	21	19	36
115	32	29	33	24	28	40	41	29	40	33	46	36	19	19	12	20	32
116	33	30	37	27	20	32	31	33	35	29	50	33	18	22	17	26	33
117	42	27	36	19	24	36	28	30	41	34	46	34	22	18	23	21	42
118	28	27	33	20	19	25	33	35	38	31	41	23	18	27	19	25	28
119	26	31	28	21	26	42	30	35	39	33	45	29	16	24	17	28	26
120	32	20	34	22	23	35	26	29	34	28	38	34	22	22	16	26	32
121	32	27	33	14	14	35	34	31	36	27	43	33	17	27	17	25	32
122	33	24	32	15	22	38	26	28	39	27	41	35	15	26	19	24	33
123	40	22	34	22	20	32	31	28	38	32	37	31	19	26	13	16	40
124	32	26	26	24	20	37	27	31	38	29	41	30	18	25	18	20	32
125	32	21	30	28	21	35	28	29	45	34	40	24	17	24	23	22	32
126	27	29	36	11	20	33	30	27	29	29	40	30	21	30	19	23	27
127	25	27	30	18	22	34	29	28	43	37	36	29	20	24	16	22	25
128	34	26	32	24	27	36	20	30	39	37	33	23	23	21	18	23	34
129	32	30	30	14	20	38	26	23	35	28	37	28	21	31	21	19	32
130	38	29	40	19	18	34	20	29	34	29	36	28	26	22	16	25	38
131	30	25	33	22	22	36	27	30	30	29	34	23	22	27	21	20	30
132	26	20	31	24	15	33	26	27	33	18	36	28	25	25	18	24	26
133	26	19	31	20	22	31	26	31	32	25	29	24	20	24	13	20	26
134	23	19	29	18	17	34	24	18	30	27	41	30	21	25	13	20	23
135	27	24	24	22	18	34	21	27	27	29	28	30	16	31	17	19	27
136	21	24	29	22	13	29	26	20	30	28	38	27	24	25	20	18	21
137	31	27	33	16	23	28	22	20	33	23	34	18	22	25	19	24	31
138	25	25	34	22	14	35	24	23	37	24	30	31	20	26	17	23	25
139	30	32	24	25	13	31	28	25	35	22	34	28	25	25	17	25	30
140	27	23	31	27	19	32	23	23	31	32	31	31	25	29	17	20	27
141	28	22	24	24	19	30	24	29	34	29	33	20	18	25	21	28	28
142	33	27	30	20	23	30	21	29	28	32	37	27	22	33	21	25	33
143	23	24	37	26	17	29	22	24	26	27	35	23	19	29	24	24	23
144	28	25	35	26	15	33	23	30	29	27	41	30	14	31	23	27	28

145	28	28	27	31	18	34	25	25	32	24	38	16	19	24	24	24	28
146	23	26	23	25	18	34	28	24	25	30	36	27	23	25	20	25	23
147	31	32	29	23	23	38	21	21	33	21	39	27	25	26	20	22	31
148	27	27	33	20	14	40	25	32	33	31	31	24	26	33	14	20	27
149	28	18	29	23	23	33	20	28	30	28	37	20	23	23	18	26	28
150	28	22	29	27	21	32	25	27	38	30	41	29	17	28	22	22	28
151	28	27	33	22	28	31	25	27	34	24	35	17	24	24	22	27	28
152	29	32	35	24	25	30	25	25	27	22	33	26	20	34	21	25	29
153	28	26	35	24	21	29	28	29	37	27	28	20	31	28	21	25	28
154	32	21	28	23	20	38	28	22	34	20	24	25	24	31	22	21	32
155	31	26	34	19	11	27	26	29	27	30	30	26	25	29	13	20	31
156	25	26	28	28	19	32	26	29	31	33	29	26	26	30	21	25	25
157	24	25	30	20	20	27	15	28	27	26	32	20	28	34	21	27	24
158	30	27	35	22	17	36	26	28	29	26	38	22	31	31	16	26	30
159	27	26	34	23	24	36	31	26	37	33	40	24	27	27	21	23	27
160	19	24	30	16	17	35	23	23	19	35	32	23	24	22	15	21	19
161	16	22	36	17	18	30	25	14	32	25	23	26	26	29	20	27	16
162	27	26	37	24	21	38	19	26	29	32	29	29	21	32	13	29	27
163	24	21	34	25	20	31	23	27	32	34	35	23	25	28	25	19	24
164	18	22	29	25	21	33	22	25	37	23	34	25	28	25	18	28	18
165	28	33	34	20	17	29	24	27	33	25	39	28	31	33	25	27	28
166	27	25	34	25	25	33	23	33	30	20	36	19	31	28	17	24	27
167	27	22	31	26	22	34	29	34	17	31	43	25	21	27	26	26	27
168	34	29	34	24	21	34	26	27	33	30	35	28	25	35	26	21	34
169	31	32	27	25	22	41	25	26	29	27	38	27	24	31	28	25	31
170	22	31	33	16	21	32	27	25	35	25	32	27	20	30	25	27	22
171	22	28	27	28	22	32	28	29	29	29	37	21	23	28	26	25	22
172	22	26	28	25	17	30	28	23	24	30	29	27	28	30	30	24	22
173	27	24	21	21	20	38	27	28	33	26	37	22	27	28	22	25	27
174	27	19	35	24	19	35	20	22	23	27	29	24	25	29	27	25	27
175	25	16	27	22	31	32	26	24	32	28	35	22	25	34	19	29	25
176	29	20	30	26	18	27	23	28	31	27	27	17	28	34	13	18	29
177	25	24	41	22	24	28	24	28	30	33	28	21	24	31	24	28	25
178	30	23	37	27	19	29	23	21	21	32	31	21	31	30	14	25	30
179	25	15	29	27	20	28	21	20	27	24	30	20	23	33	20	27	25
180	24	25	33	22	19	31	28	26	24	29	41	26	20	32	23	23	24

**Luminaire Report Summary**

IESNA:LM-63-2002  
[TEST]  
[TESTLAB] Shenzhen Belling Test Laboratory  
[ISSUE DATE] 2018-7-16 10:11  
[MANUFAC] SARIN Energy Inc  
[LUMINAIRE] SES-SB7-4000-200-T4-480V  
[\_TOTALLUMINAIRELUMENS] 25213.4  
[TESTINST] GPM-3000  
[TESTDIST] 17.398 M  
[TESTTEMPERATURE] 26.9 'C  
[TESTHUMIDITY]  
[TESTOPERATOR]  
FILE: CANDELA MULTIPLIER: 1  
FILE: VERTICAL ANGLES: 181, HORIZONTAL ANGLES: 17  
FILE: COORDINATE SYSTEM: TYPE C  
FILE: UNIT OF MEASURE: METRIC  
FILE: BALLAST FACTOR: 1

Photometrics Pro 1.3.29 copyright 2003-2019 by jSolutions, Inc.  
Reported data calculated from manufacturer's data file, based on IES recommended methods.