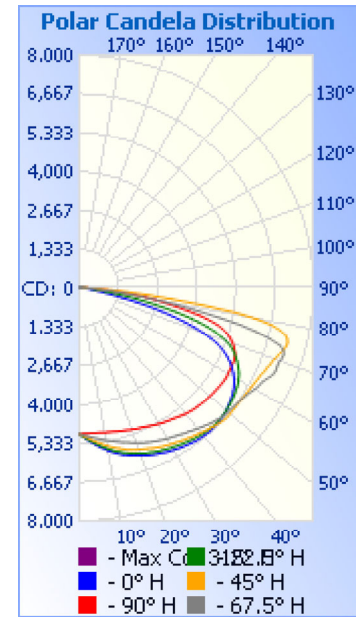


Photometrics Pro

Luminaire Photometric Report

Filename: Shoebox SB7 200W T4 - 277V
Manufacturer: SARIN Energy Inc
Luminaire: SES-SB7-4000-200-T4-277V
Lamp Output: 1 lamp, rated Lumens/lamp: 24156.6
Max Candela: 7,984.9 at Horizontal: 315°, Vertical: 75°
Input Wattage: 193.22
Luminous Opening: Point
Test Lab: Shenzhen Belling Test Laboratory
Photometry : Type C
Nema Type: 7 X 7



Roadway Summary

Cutoff Classification:	NONCUTOFF	
Distribution:	TYPE IV, MEDIUM	
Max Cd, 90 Deg Vert:	66.5	
Max Cd, 80 to <90 Deg:	6,192.9	
	Lumens	% Lamp
Downward Street Side:	16,646.3	68.9%
Downward House Side:	7,336.9	30.4%
Downward Total:	23,983.2	99.3%
Upward Street Side:	83.3	0.3%
Upward House Side:	90.1	0.4%
Upward Total:	173.4	0.7%
Total Lumens:	24,156.6	100%

Flood Summary

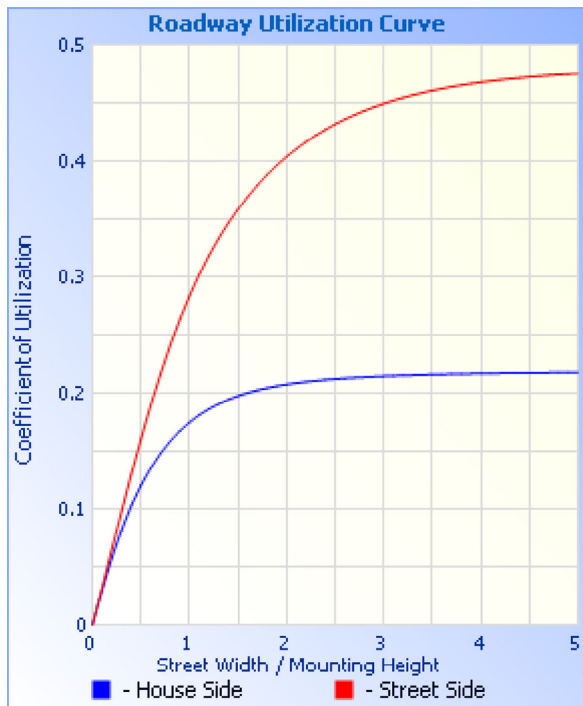
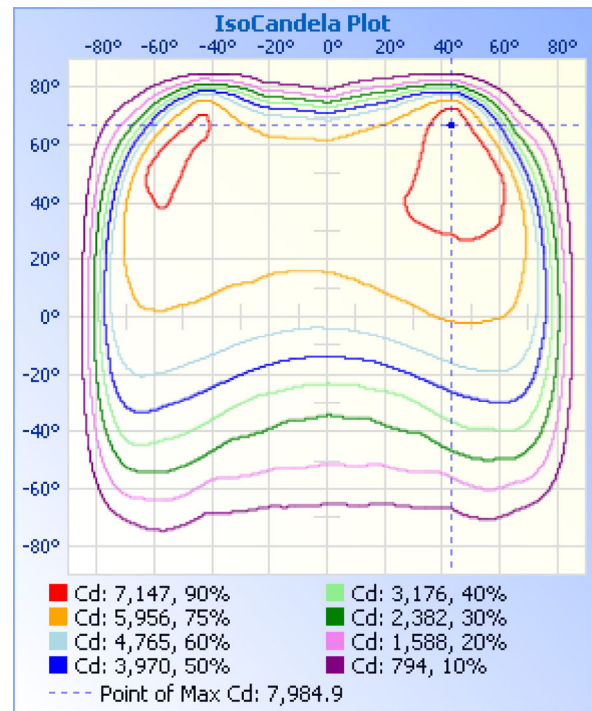
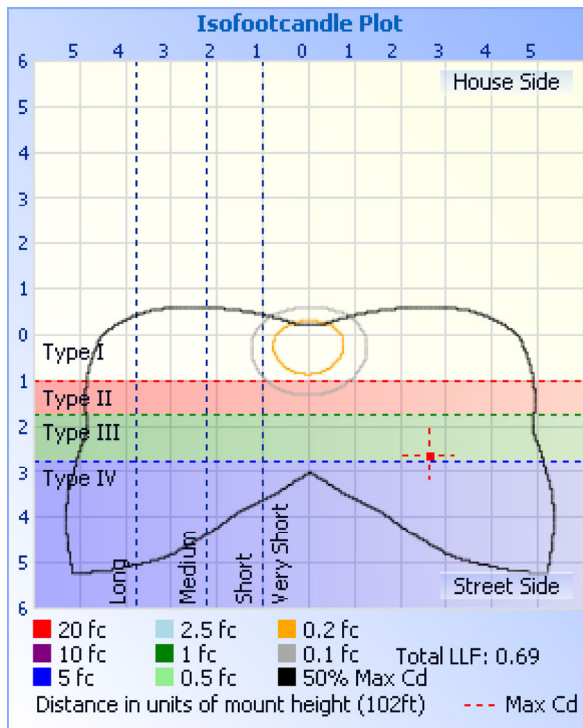
	Efficiency	Lumens	Horizontal Spread	Vertical Spread
Field (10%):	97.8%	23,619.7	151.3	151.2
Beam (50%):	79%	19,074.3	122	104.4
Total:	99.9%	24,141.2		

Zonal Lumen Summary

Zone	Lumens	% Lamp	% Luminaire
0-30	4,216.4	17.5%	17.5%
0-40	7,334.9	30.4%	30.4%
0-60	15,412.4	63.8%	63.8%
60-90	8,570.0	35.5%	35.5%
70-100	4,243.4	17.6%	17.6%
90-120	96.6	0.4%	0.4%
0-90	23,982.4	99.3%	99.3%
90-180	173.4	0.7%	0.7%
0-180	24,155.8	100%	100%

Lumens Per Zone

Zone	Lumens	% Total	Zone	Lumens	% Total
0-10	479.4	2.0%	90-100	37.8	0.2%
10-20	1,423.9	5.9%	100-110	31.2	0.1%
20-30	2,313.2	9.6%	110-120	27.6	0.1%
30-40	3,118.6	12.9%	120-130	22.4	0.1%
40-50	3,816.8	15.8%	130-140	18.9	0.1%
50-60	4,260.6	17.6%	140-150	15.0	0.1%
60-70	4,364.4	18.1%	150-160	11.4	0%
70-80	3,448.6	14.3%	160-170	6.9	0%
80-90	757.0	3.1%	170-180	2.3	0%



Illuminance at a Distance

	Center Beam fc	Beam Width	
16.7ft	18.0 fc	43.1 ft	60.3 ft
33.3ft	4.53 fc	85.9 ft	120.2 ft
50.0ft	2.01 fc	129.0 ft	180.5 ft
66.7ft	1.13 fc	172.1 ft	240.8 ft
83.3ft	0.72 fc	215.0 ft	300.7 ft
100.0ft	0.50 fc	258.1 ft	361.0 ft

Vert. Spread: 104.4°
 Horiz. Spread: 122.0°

Coefficients Of Utilization - Zonal Cavity Method

Effective Floor Cavity Reflectance: 20%

RCC %:	80				70				50				30				10				0
RW %:	70	50	30	0	70	50	30	0	50	30	20	0	50	30	20	0	50	30	20	0	0
RCR: 0	1.19	1.19	1.19	1.19	1.16	1.16	1.16	.99	1.11	1.11	1.11	1.06	1.06	1.06	1.06	1.01	1.01	1.01	1.01	.99	
1	1.06	1.00	.95	.90	1.03	.98	.93	.79	.93	.89	.85	.89	.86	.83	.85	.85	.83	.80	.80	.78	
2	.94	.84	.76	.69	.91	.82	.75	.62	.78	.72	.66	.75	.70	.65	.72	.67	.63	.63	.63	.61	
3	.85	.72	.62	.55	.82	.70	.61	.50	.67	.59	.53	.64	.58	.52	.61	.56	.51	.51	.51	.48	

4	.76	.63	.52	.45	.74	.61	.52	.42	.58	.50	.44	.56	.49	.43	.53	.47	.42	.40
5	.70	.55	.45	.37	.67	.54	.44	.35	.51	.43	.36	.49	.42	.36	.47	.41	.35	.33
6	.64	.49	.39	.32	.62	.48	.38	.30	.46	.37	.31	.44	.37	.31	.42	.36	.30	.28
7	.59	.44	.34	.27	.57	.43	.34	.26	.41	.33	.27	.40	.32	.27	.38	.32	.26	.24
8	.55	.40	.30	.24	.53	.39	.30	.23	.38	.29	.24	.36	.29	.23	.35	.28	.23	.21
9	.51	.36	.27	.21	.49	.36	.27	.21	.34	.27	.21	.33	.26	.21	.32	.25	.21	.19
10	.47	.33	.25	.19	.46	.33	.25	.18	.32	.24	.19	.31	.24	.19	.30	.23	.19	.17

Candela Table - Type C																	
	0	22.5	45	67.5	90	112.5	135	157.5	180	202.5	225	247.5	270	292.5	315	337.5	360
0	5021	5021	5021	5021	5021	5021	5021	5021	5021	5021	5021	5021	5021	5021	5021	5021	5021
1	5085	5088	5066	5049	5014	4994	4974	4953	4952	4962	4972	4999	5030	5052	5068	5083	5085
2	5158	5147	5112	5076	5010	4957	4922	4886	4883	4898	4921	4977	5040	5088	5122	5148	5158
3	5224	5206	5156	5102	5008	4930	4867	4808	4806	4831	4873	4952	5050	5124	5181	5210	5224
4	5289	5263	5201	5131	5008	4902	4806	4744	4731	4756	4828	4929	5062	5157	5237	5282	5289
5	5355	5317	5258	5155	5011	4871	4753	4672	4650	4686	4779	4903	5077	5190	5293	5348	5355
6	5420	5377	5309	5189	5013	4847	4704	4601	4570	4619	4720	4890	5091	5232	5348	5409	5420
7	5486	5435	5353	5215	5019	4822	4648	4524	4495	4546	4671	4869	5101	5279	5404	5472	5486
8	5548	5496	5401	5251	5027	4804	4593	4446	4415	4479	4620	4847	5116	5323	5467	5536	5548
9	5612	5549	5452	5283	5038	4783	4544	4377	4321	4396	4568	4826	5134	5370	5523	5597	5612
10	5673	5607	5501	5314	5045	4760	4491	4301	4241	4323	4514	4812	5149	5416	5586	5658	5673
11	5733	5663	5553	5345	5050	4736	4441	4234	4158	4245	4471	4794	5166	5456	5642	5730	5733
12	5785	5716	5596	5374	5060	4716	4387	4158	4082	4174	4418	4777	5189	5501	5703	5787	5785
13	5836	5765	5641	5411	5071	4697	4335	4083	3995	4105	4369	4768	5208	5550	5756	5845	5836
14	5890	5810	5681	5445	5085	4679	4287	4006	3918	4027	4311	4751	5226	5590	5823	5897	5890
15	5931	5857	5723	5480	5101	4657	4234	3939	3825	3943	4260	4734	5247	5642	5876	5949	5931
16	5973	5893	5768	5515	5118	4638	4182	3857	3743	3871	4207	4718	5274	5690	5927	5996	5973
17	6011	5936	5810	5550	5133	4620	4131	3781	3663	3796	4154	4703	5301	5738	5980	6050	6011
18	6047	5973	5847	5583	5148	4603	4078	3710	3580	3720	4099	4689	5334	5787	6034	6091	6047
19	6088	6012	5881	5624	5168	4590	4026	3634	3489	3633	4041	4676	5364	5839	6083	6141	6088
20	6124	6051	5905	5655	5187	4578	3970	3554	3402	3559	3990	4660	5398	5891	6130	6186	6124
21	6161	6083	5935	5695	5203	4562	3923	3479	3319	3480	3937	4650	5431	5950	6179	6231	6161
22	6199	6119	5960	5729	5221	4550	3870	3403	3239	3400	3882	4634	5467	5997	6215	6273	6199
23	6231	6144	5993	5767	5238	4531	3820	3328	3156	3320	3828	4624	5494	6059	6256	6309	6231
24	6259	6179	6027	5803	5256	4515	3771	3255	3078	3247	3768	4613	5526	6108	6305	6343	6259
25	6288	6203	6064	5834	5273	4508	3722	3184	2990	3171	3709	4596	5561	6161	6348	6377	6288
26	6314	6236	6089	5859	5296	4497	3663	3107	2911	3094	3656	4585	5597	6207	6381	6409	6314
27	6345	6253	6121	5894	5322	4483	3607	3038	2837	3018	3609	4571	5633	6248	6421	6442	6345
28	6382	6277	6152	5926	5351	4468	3555	2970	2759	2945	3546	4564	5666	6303	6470	6474	6382
29	6405	6305	6174	5957	5378	4452	3511	2906	2691	2874	3487	4541	5697	6351	6517	6500	6405
30	6430	6329	6202	5984	5401	4444	3461	2831	2614	2805	3426	4530	5724	6399	6559	6523	6430
31	6454	6349	6229	6010	5427	4427	3403	2771	2550	2728	3376	4511	5756	6442	6602	6548	6454
32	6482	6374	6253	6033	5450	4412	3362	2705	2489	2666	3318	4502	5783	6487	6638	6579	6482
33	6506	6402	6284	6067	5470	4402	3313	2649	2430	2607	3272	4487	5820	6534	6681	6613	6506
34	6522	6419	6319	6089	5491	4382	3254	2588	2372	2543	3210	4473	5851	6580	6719	6639	6522
35	6544	6447	6339	6131	5511	4373	3205	2523	2306	2485	3164	4460	5885	6619	6764	6670	6544
36	6568	6470	6369	6167	5537	4361	3152	2475	2250	2419	3105	4442	5909	6661	6800	6696	6568
37	6592	6493	6402	6193	5564	4349	3101	2418	2201	2364	3053	4429	5929	6700	6845	6729	6592
38	6612	6515	6432	6234	5595	4332	3052	2366	2146	2309	2997	4415	5949	6741	6888	6757	6612
39	6623	6535	6461	6275	5628	4321	3007	2316	2104	2260	2944	4395	5976	6777	6942	6787	6623
40	6633	6552	6491	6309	5651	4302	2960	2257	2054	2206	2897	4375	6004	6824	6989	6824	6633
41	6644	6571	6525	6347	5676	4283	2904	2210	2007	2163	2842	4356	6018	6859	7040	6846	6644
42	6653	6578	6559	6386	5701	4265	2856	2167	1966	2113	2796	4333	6040	6904	7074	6876	6653
43	6655	6589	6584	6426	5718	4252	2808	2124	1926	2060	2743	4309	6053	6937	7115	6895	6655
44	6655	6608	6619	6473	5732	4236	2760	2076	1876	2020	2688	4287	6068	6974	7159	6909	6655
45	6643	6613	6656	6501	5747	4216	2710	2036	1834	1971	2640	4262	6077	7004	7198	6918	6643
46	6639	6611	6675	6537	5764	4194	2660	1989	1796	1930	2592	4235	6087	7034	7226	6917	6639

47	6623	6607	6713	6577	5781	4168	2615	1945	1754	1883	2539	4211	6090	7062	7257	6917	6623
48	6606	6594	6729	6600	5794	4148	2572	1903	1708	1836	2488	4185	6086	7078	7275	6910	6606
49	6589	6579	6736	6625	5800	4115	2518	1858	1668	1790	2433	4146	6085	7085	7285	6895	6589
50	6563	6562	6738	6639	5808	4090	2471	1807	1617	1737	2386	4119	6080	7094	7288	6885	6563
51	6538	6545	6734	6651	5823	4057	2421	1764	1571	1693	2332	4072	6076	7116	7284	6867	6538
52	6502	6527	6739	6673	5833	4033	2370	1720	1520	1643	2277	4029	6070	7136	7290	6845	6502
53	6471	6510	6742	6693	5843	3997	2326	1667	1479	1595	2219	3992	6061	7160	7295	6826	6471
54	6432	6487	6739	6711	5855	3961	2266	1608	1418	1536	2164	3941	6048	7181	7314	6808	6432
55	6400	6467	6747	6729	5869	3929	2206	1553	1370	1477	2107	3884	6035	7208	7332	6793	6400
56	6352	6435	6757	6761	5879	3885	2160	1502	1313	1422	2051	3830	6026	7248	7342	6767	6352
57	6307	6405	6763	6800	5888	3837	2103	1439	1259	1369	1990	3772	6008	7289	7351	6747	6307
58	6249	6376	6772	6837	5893	3794	2040	1382	1211	1299	1914	3713	5986	7313	7362	6720	6249
59	6193	6343	6790	6890	5893	3746	1975	1310	1143	1241	1846	3646	5968	7329	7385	6679	6193
60	6117	6295	6802	6951	5887	3692	1904	1251	1089	1178	1776	3565	5958	7354	7414	6642	6117
61	6034	6248	6821	6991	5876	3622	1841	1193	1038	1123	1694	3483	5935	7375	7435	6601	6034
62	5936	6192	6845	7024	5872	3566	1765	1124	977	1056	1624	3393	5905	7420	7460	6549	5936
63	5841	6117	6868	7066	5865	3496	1696	1067	924	993	1543	3306	5874	7486	7502	6501	5841
64	5718	6047	6890	7130	5865	3433	1615	1007	870	934	1465	3207	5840	7521	7542	6437	5718
65	5589	5965	6927	7212	5853	3363	1544	942	779	877	1383	3102	5786	7515	7582	6377	5589
66	5441	5875	6965	7274	5834	3282	1454	880	711	821	1306	3007	5715	7472	7621	6319	5441
67	5275	5783	6997	7303	5799	3202	1376	822	665	751	1215	2898	5621	7422	7657	6247	5275
68	5073	5664	7041	7300	5736	3113	1289	745	623	676	1139	2779	5514	7395	7698	6168	5073
69	4822	5529	7077	7295	5671	3029	1203	665	594	621	1053	2665	5396	7370	7776	6050	4822
70	4518	5350	7132	7320	5597	2915	1127	622	553	579	975	2550	5265	7338	7865	5917	4518
71	4176	5136	7181	7362	5501	2806	1042	557	518	537	900	2431	5102	7222	7906	5755	4176
72	3790	4892	7248	7372	5402	2697	957	511	496	493	835	2285	4911	6982	7941	5559	3790
73	3360	4592	7313	7309	5261	2553	882	478	478	457	760	2149	4676	6568	7962	5325	3360
74	2968	4245	7361	7134	5106	2421	807	444	453	433	693	1996	4431	6056	7976	5012	2968
75	2506	3826	7385	6764	4889	2250	727	405	429	402	629	1818	4159	5377	7985	4663	2506
76	2005	3399	7350	6261	4616	2074	660	385	408	379	569	1644	3832	4700	7941	4271	2005
77	1484	2934	7254	5668	4271	1894	586	354	396	352	492	1455	3531	4011	7754	3838	1484
78	1135	2473	7049	4898	3827	1727	507	331	368	330	444	1295	3209	3346	7437	3365	1135
79	839	2027	6721	4170	3423	1556	449	302	351	304	386	1131	2901	2760	6852	2843	839
80	650	1609	6193	3464	3032	1410	376	271	320	279	335	961	2552	2157	6155	2361	650
81	498	1200	5449	2731	2614	1241	312	252	294	250	289	696	2209	1657	5146	1834	498
82	397	909	4271	2139	2278	1068	250	213	269	220	239	479	1839	1222	4021	1420	397
83	325	696	3211	1619	1852	776	199	189	237	197	203	323	1451	843	2950	1098	325
84	256	550	2381	1139	1430	498	160	163	207	167	169	219	1146	554	2086	834	256
85	207	421	1658	735	1028	287	129	116	165	131	138	170	800	337	1450	602	207
86	159	303	1065	445	637	157	107	104	125	107	113	130	469	198	990	420	159
87	90	178	537	238	357	111	78	51	71	78	88	102	234	118	520	224	90
88	53	57	130	114	153	56	58	61	62	63	72	81	57	70	88	75	53
89	36	51	74	66	58	48	42	39	35	38	52	58	23	51	65	54	36
90	35	43	66	51	30	45	32	31	23	29	46	37	19	29	52	57	35
91	47	39	67	50	25	39	26	23	27	28	42	48	18	43	48	49	47
92	43	35	49	47	24	40	27	24	29	21	46	47	16	41	53	46	43
93	42	41	54	49	23	27	33	29	28	25	45	48	15	30	46	47	42
94	39	37	46	44	21	39	35	30	26	24	47	43	13	41	44	48	39
95	37	38	46	40	19	39	28	27	21	29	49	39	12	29	41	40	37

96	39	33	42	44	18	36	26	30	21	24	49	47	12	32	37	37	39
97	27	39	46	42	17	35	34	33	28	21	46	43	10	35	33	37	27
98	38	34	47	38	16	37	30	35	24	28	44	38	10	33	31	36	38
99	30	27	44	45	16	36	32	27	25	35	34	44	10	30	33	37	30
100	27	37	40	40	16	34	34	32	26	26	46	42	10	32	32	29	27
101	35	24	45	30	15	32	31	32	26	31	41	41	8	32	36	29	35
102	29	23	32	33	15	37	36	31	24	22	42	40	8	30	31	37	29
103	26	29	35	31	14	38	34	33	31	29	45	46	8	25	21	29	26
104	30	28	40	34	14	39	35	32	23	27	45	43	9	27	18	36	30
105	28	29	44	31	14	36	31	33	31	27	41	40	6	26	24	33	28
106	26	26	38	27	14	33	36	39	29	27	40	44	8	25	25	31	26
107	26	22	35	26	14	33	30	39	31	31	43	43	7	26	27	30	26
108	25	30	37	24	13	30	28	46	29	26	45	40	7	26	24	26	25
109	29	28	33	33	13	34	36	37	26	25	42	43	6	27	21	27	29
110	30	25	35	29	14	33	38	35	31	29	39	38	8	24	25	29	30
111	31	28	32	26	12	34	32	39	34	29	49	42	7	24	25	29	31
112	34	26	32	29	13	31	38	33	25	27	31	41	7	25	24	20	34
113	34	23	29	29	13	34	32	43	32	27	43	37	7	25	20	26	34
114	27	29	25	24	12	42	29	35	36	25	41	37	7	28	23	23	27
115	31	27	35	20	12	30	26	41	28	27	33	40	7	22	22	25	31
116	32	33	32	27	12	38	35	36	29	28	35	42	7	28	23	34	32
117	28	26	30	28	11	35	36	37	35	21	41	35	6	24	21	29	28
118	36	24	32	32	10	32	31	39	33	32	45	29	7	30	25	28	36
119	32	20	34	25	11	37	13	24	30	29	35	34	6	23	23	22	32
120	31	19	29	25	12	31	31	43	27	17	30	34	6	30	17	24	31
121	30	21	27	28	12	28	21	31	33	23	37	38	7	22	20	29	30
122	23	16	30	27	11	38	29	32	26	23	39	27	7	27	20	26	23
123	28	17	32	26	11	29	22	36	27	22	41	30	7	18	24	22	28
124	26	21	33	18	10	35	31	37	33	26	38	26	7	23	22	24	26
125	28	19	30	33	11	32	25	34	29	26	36	37	5	28	22	18	28
126	25	15	30	26	11	27	28	38	25	24	37	32	6	23	20	26	25
127	22	16	23	28	10	32	32	34	28	27	39	26	7	25	16	30	22
128	24	20	26	28	11	34	28	33	30	24	31	30	6	18	20	28	24
129	27	23	27	29	11	32	25	35	26	26	36	28	6	24	23	20	27
130	19	22	33	27	10	27	31	38	25	23	34	25	7	30	23	25	19
131	13	17	30	30	10	28	28	30	27	25	35	31	6	29	29	22	13
132	26	12	36	24	10	35	22	34	28	18	36	32	7	23	23	26	26
133	26	21	32	25	10	28	29	24	29	26	34	17	7	24	24	25	26
134	22	17	31	19	10	35	31	21	30	23	35	30	6	25	22	22	22
135	26	19	27	29	10	31	30	32	32	26	29	27	7	28	21	21	26
136	23	20	30	26	9	31	32	29	25	24	28	26	7	24	24	27	23
137	25	22	28	24	9	29	32	27	33	27	32	29	7	30	20	28	25
138	30	18	33	31	9	37	28	19	32	21	36	25	7	29	25	25	30
139	30	20	21	22	10	31	32	37	28	23	29	25	7	26	17	28	30
140	19	13	33	26	10	16	28	31	29	24	34	25	8	26	24	26	19
141	27	23	22	26	10	32	21	34	31	20	28	24	8	27	25	32	27
142	21	28	28	25	10	28	28	37	27	23	32	26	7	23	26	24	21
143	19	20	24	34	9	26	34	27	30	24	28	29	8	28	28	25	19
144	27	18	28	29	9	29	29	35	24	23	30	20	8	30	14	22	27

145	20	23	33	25	9	34	28	24	27	23	30	21	8	29	19	26	20
146	26	20	29	17	10	23	31	32	28	26	24	23	8	28	24	28	26
147	21	26	32	30	10	35	28	27	25	22	29	23	8	22	20	30	21
148	19	24	32	26	9	27	22	33	18	20	31	23	8	30	20	20	19
149	24	18	31	27	10	30	29	33	24	23	28	25	8	25	21	21	24
150	27	26	24	32	10	30	25	30	33	16	25	25	7	23	20	25	27
151	18	20	36	27	9	32	21	26	28	24	30	27	9	33	26	29	18
152	25	27	26	28	10	32	28	27	32	21	26	25	8	32	23	30	25
153	25	24	25	30	10	23	23	30	28	15	31	26	8	32	26	28	25
154	18	23	34	29	10	34	29	25	33	25	34	22	8	27	25	24	18
155	22	21	38	27	9	35	26	33	28	23	30	27	8	34	23	27	22
156	25	18	23	24	10	31	25	26	29	30	31	22	9	26	19	29	25
157	21	20	32	24	10	33	29	32	30	27	30	26	8	30	25	26	21
158	24	22	34	31	9	33	26	32	25	24	30	31	9	26	22	31	24
159	25	16	30	29	10	28	26	21	27	24	36	24	8	28	24	27	25
160	22	23	23	24	9	33	30	28	15	18	28	28	9	27	27	27	22
161	24	18	32	22	10	36	24	31	21	21	31	22	8	33	22	21	24
162	18	18	31	26	9	32	27	33	28	25	27	31	9	21	25	27	18
163	22	25	34	28	9	28	25	32	23	27	33	30	7	26	26	27	22
164	27	21	32	24	10	30	25	32	30	21	28	26	9	33	29	27	27
165	25	24	33	25	9	36	25	29	27	22	31	27	8	27	26	28	25
166	22	22	36	31	10	32	29	26	18	26	34	28	9	22	20	21	22
167	19	21	28	25	10	32	28	28	22	27	27	26	9	26	21	31	19
168	25	21	29	31	10	32	28	29	23	25	31	26	9	36	27	28	25
169	24	29	26	26	10	29	27	28	28	27	28	32	9	26	29	23	24
170	20	18	30	28	9	35	25	27	25	19	35	24	10	27	26	26	20
171	23	15	33	25	9	24	34	33	26	24	27	26	10	29	30	29	23
172	21	21	24	25	10	33	24	29	21	21	29	28	10	35	23	18	21
173	29	24	28	25	11	29	22	28	26	24	32	25	9	32	26	24	29
174	23	15	36	30	11	30	26	32	20	24	25	29	10	30	25	21	23
175	18	0	29	32	10	33	22	31	24	17	23	20	10	28	28	22	18
176	17	21	29	31	9	26	23	23	24	25	30	29	10	27	26	26	17
177	24	23	28	28	10	27	16	30	22	18	27	31	9	36	29	27	24
178	17	14	35	25	8	35	16	16	20	21	25	23	10	32	23	24	17
179	26	21	25	21	10	26	23	27	25	25	31	24	10	28	31	26	26
180	23	17	24	27	9	26	23	29	18	22	31	22	10	25	26	28	23

Luminaire Report Summary

IESNA:LM-63-2002
[TEST]
[TESTLAB] Shenzhen Belling Test Laboratory
[ISSUE DATE] 2018-5-28 19:47
[MANUFAC] SARIN Energy Inc
[LUMINAIRE] SES-SB7-4000-200-T4-277V
[_TOTALLUMINAIRELUMENS] 24155.8
[VOLTAGE] 277.1 V
[CURRENT] 0.737 A
[POWERFACTOR] 0.941
[TESTINST] GPM-3000
[TESTDIST] 17.398 M
[TESTTEMPERATURE] 28.9 'C
[TESTHUMIDITY]
[TESTOPERATOR]
FILE: CANDELA MULTIPLIER: 1
FILE: VERTICAL ANGLES: 181, HORIZONTAL ANGLES: 17
FILE: COORDINATE SYSTEM: TYPE C
FILE: UNIT OF MEASURE: METRIC
FILE: BALLAST FACTOR: 1

Photometrics Pro 1.3.29 copyright 2003-2019 by jSolutions, Inc.
Reported data calculated from manufacturer's data file, based on IES recommended methods.