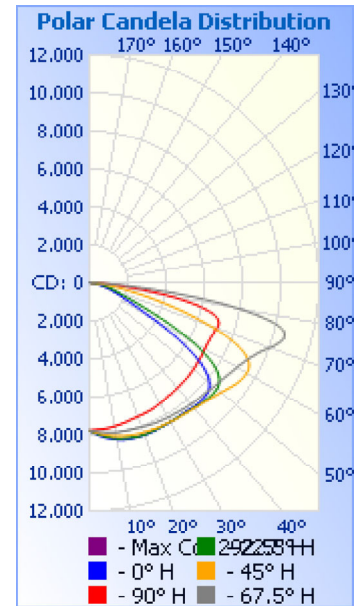


# Photometrics Pro

## Luminaire Photometric Report

**Filename:** Shoebox SB7 240W T3 - 480V  
**Manufacturer:** SARIN Energy Inc  
**Luminaire:** SES-SB7-4000-240-T3-480V  
**Lamp Output:** 1 lamp, rated Lumens/lamp: 31053.3  
**Max Candela:** 11,201.0 at Horizontal: 292.5°, Vertical: 72°  
**Input Wattage:** 238.21  
**Luminous Opening:** Point  
**Test Lab:** Shenzhen Belling Test Laboratory  
**Photometry :** Type C  
**Nema Type:** 7 X 7



### Roadway Summary

Cutoff Classification:	NONCUTOFF	
Distribution:	TYPE III, MEDIUM	
Max Cd, 90 Deg Vert:	64.5	
Max Cd, 80 to <90 Deg:	8,132.9	
	Lumens	% Lamp
Downward Street Side:	19,533.9	62.9%
Downward House Side:	11,384.4	36.7%
Downward Total:	30,918.2	99.6%
Upward Street Side:	60.5	0.2%
Upward House Side:	74.6	0.2%
Upward Total:	135.1	0.4%
Total Lumens:	31,053.3	100%

### Flood Summary

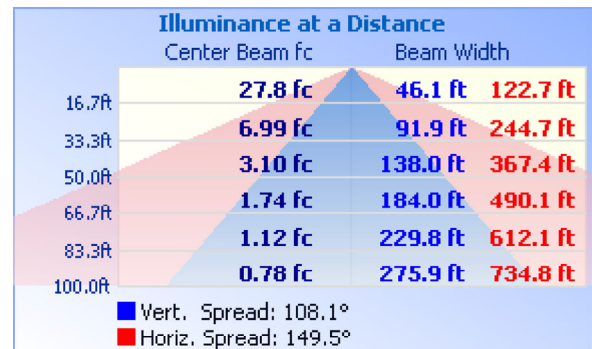
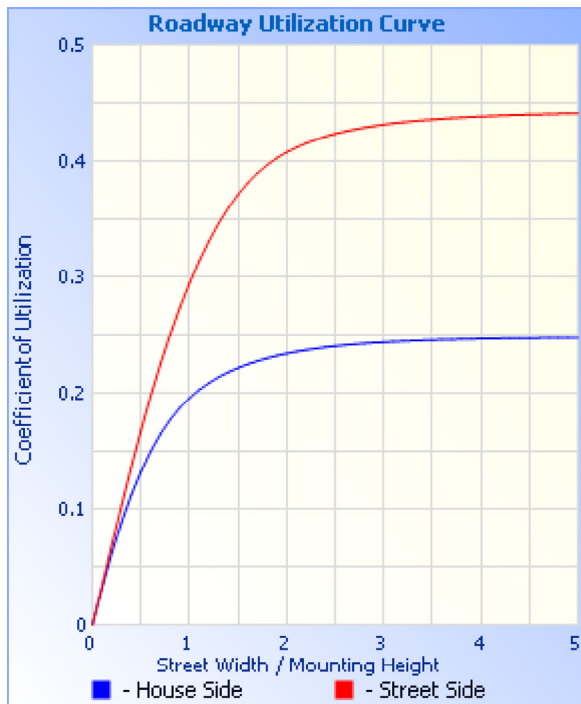
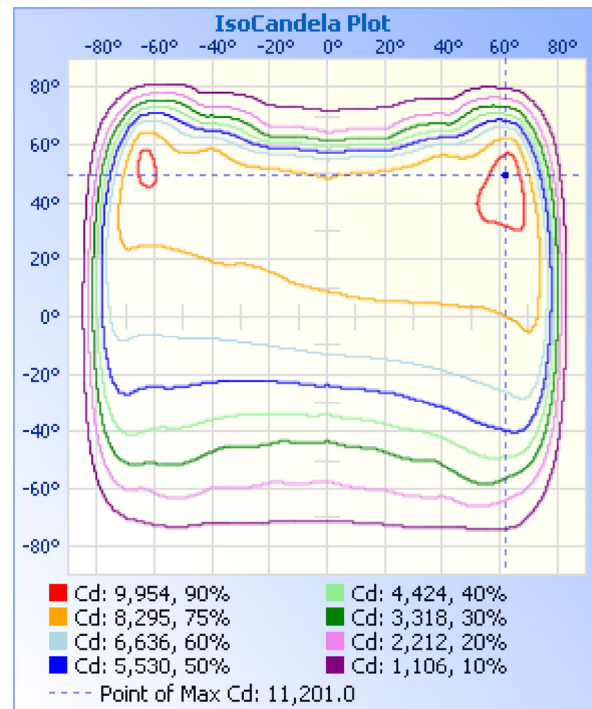
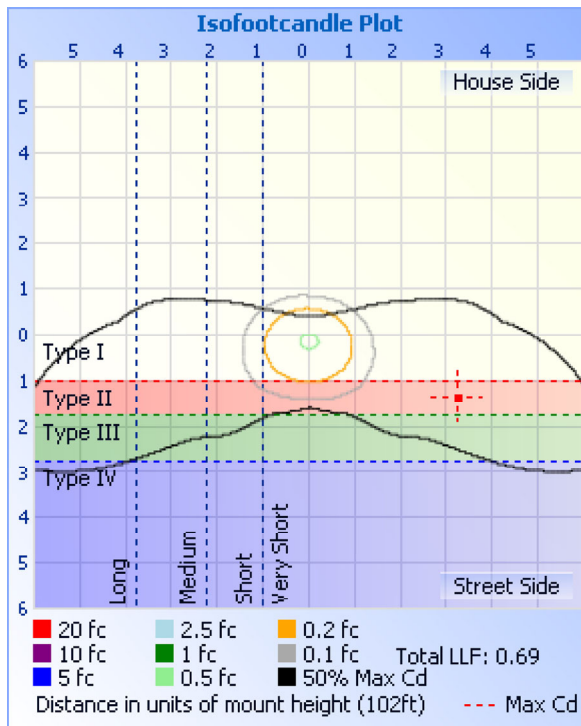
	Efficiency	Lumens	Horizontal Spread	Vertical Spread
Field (10%):	98%	30,423.0	163.9	153.3
Beam (50%):	76.3%	23,707.1	149.5	108.1
Total:	100%	31,038.9		

### Zonal Lumen Summary

Zone	Lumens	% Lamp	% Luminaire
0-30	6,252.3	20.1%	20.1%
0-40	10,645.8	34.3%	34.3%
0-60	21,469.4	69.1%	69.1%
60-90	9,447.1	30.4%	30.4%
70-100	4,434.2	14.3%	14.3%
90-120	78.5	0.3%	0.3%
0-90	30,916.5	99.6%	99.6%
90-180	135.1	0.4%	0.4%
0-180	31,051.5	100%	100%

### Lumens Per Zone

Zone	Lumens	% Total	Zone	Lumens	% Total
0-10	737.1	2.4%	90-100	34.0	0.1%
10-20	2,142.3	6.9%	100-110	24.1	0.1%
20-30	3,372.9	10.9%	110-120	20.3	0.1%
30-40	4,393.5	14.1%	120-130	16.1	0.1%
40-50	5,206.9	16.8%	130-140	13.1	0%
50-60	5,616.6	18.1%	140-150	11.2	0%
60-70	5,046.9	16.3%	150-160	8.8	0%
70-80	3,612.0	11.6%	160-170	5.6	0%
80-90	788.2	2.5%	170-180	1.8	0%



**Coefficients Of Utilization - Zonal Cavity Method**

Effective Floor Cavity Reflectance: 20%

RCC %:	80				70				50			30			10			0
RW %:	70	50	30	0	70	50	30	0	50	30	20	50	30	20	50	30	20	0
RCR: 0	1.19	1.19	1.19	1.19	1.16	1.16	1.16	1.00	1.11	1.11	1.11	1.06	1.06	1.06	1.02	1.02	1.02	1.00
1	1.07	1.01	.96	.92	1.04	.99	.95	.81	.95	.91	.87	.91	.88	.85	.87	.84	.82	.80
2	.96	.86	.79	.72	.93	.84	.77	.65	.81	.75	.69	.77	.72	.68	.74	.70	.66	.64
3	.86	.74	.65	.58	.84	.73	.64	.54	.70	.62	.56	.67	.60	.55	.64	.59	.54	.52

4	.78	.65	.55	.48	.76	.64	.54	.45	.61	.53	.47	.58	.52	.46	.56	.50	.45	.43
5	.71	.57	.48	.40	.69	.56	.47	.38	.54	.46	.39	.52	.45	.39	.50	.44	.38	.36
6	.66	.51	.41	.35	.64	.50	.41	.33	.48	.40	.34	.46	.39	.34	.45	.38	.33	.31
7	.61	.46	.37	.30	.59	.45	.36	.29	.44	.35	.30	.42	.35	.29	.41	.34	.29	.27
8	.56	.42	.33	.26	.55	.41	.32	.26	.40	.32	.26	.38	.31	.26	.37	.31	.26	.24
9	.52	.38	.29	.24	.51	.38	.29	.23	.36	.29	.23	.35	.28	.23	.34	.28	.23	.21
10	.49	.35	.27	.21	.48	.34	.26	.21	.33	.26	.21	.32	.26	.21	.31	.25	.21	.19

## Candela Table - Type C

	0	22.5	45	67.5	90	112.5	135	157.5	180	202.5	225	247.5	270	292.5	315	337.5	360
0	7752	7752	7752	7752	7752	7752	7752	7752	7752	7752	7752	7752	7752	7752	7752	7752	7752
1	7827	7816	7798	7769	7736	7711	7691	7677	7677	7688	7707	7739	7769	7794	7809	7819	7827
2	7898	7877	7850	7789	7728	7673	7625	7597	7594	7619	7661	7723	7786	7843	7865	7891	7898
3	7965	7938	7893	7818	7719	7637	7550	7515	7509	7539	7610	7715	7798	7878	7918	7954	7965
4	8040	7999	7939	7844	7710	7592	7484	7426	7433	7465	7562	7693	7814	7922	7980	8013	8040
5	8102	8054	7986	7861	7706	7550	7420	7346	7346	7389	7504	7671	7826	7963	8025	8073	8102
6	8157	8105	8024	7891	7697	7509	7349	7260	7258	7307	7456	7647	7833	8008	8083	8131	8157
7	8209	8156	8069	7913	7687	7471	7276	7182	7164	7226	7408	7623	7838	8044	8133	8186	8209
8	8255	8202	8105	7934	7677	7432	7206	7094	7073	7142	7359	7601	7837	8085	8193	8247	8255
9	8297	8249	8133	7948	7659	7385	7131	6995	6985	7066	7304	7576	7838	8117	8238	8295	8297
10	8334	8283	8163	7965	7636	7339	7062	6903	6890	6983	7242	7550	7837	8146	8287	8333	8334
11	8370	8314	8188	7977	7620	7293	6985	6811	6801	6902	7188	7531	7843	8177	8328	8380	8370
12	8402	8338	8214	7980	7602	7242	6903	6720	6700	6816	7125	7499	7848	8205	8361	8409	8402
13	8424	8358	8242	7988	7583	7186	6826	6628	6591	6731	7059	7466	7851	8228	8396	8438	8424
14	8441	8387	8258	7992	7561	7135	6753	6535	6501	6638	6993	7435	7855	8259	8426	8456	8441
15	8451	8407	8278	7997	7545	7089	6670	6436	6389	6543	6927	7398	7867	8288	8449	8475	8451
16	8458	8429	8297	8005	7514	7024	6590	6344	6281	6456	6839	7364	7878	8309	8468	8497	8458
17	8465	8446	8312	8011	7499	6973	6509	6255	6174	6369	6770	7331	7887	8335	8497	8511	8465
18	8472	8460	8330	8019	7482	6932	6429	6154	6075	6269	6697	7301	7906	8363	8513	8524	8472
19	8475	8464	8333	8032	7467	6877	6344	6049	5974	6172	6626	7272	7918	8397	8532	8535	8475
20	8480	8465	8344	8044	7450	6823	6266	5953	5872	6075	6562	7239	7928	8435	8550	8544	8480
21	8481	8467	8351	8057	7442	6778	6185	5854	5771	5987	6495	7210	7935	8466	8576	8554	8481
22	8481	8456	8361	8071	7437	6726	6106	5759	5678	5891	6419	7177	7944	8498	8593	8557	8481
23	8474	8452	8372	8085	7424	6677	6025	5668	5580	5800	6352	7141	7947	8532	8616	8556	8474
24	8470	8446	8386	8100	7413	6630	5949	5574	5475	5708	6285	7108	7956	8560	8632	8555	8470
25	8458	8443	8397	8116	7409	6574	5862	5478	5377	5616	6219	7066	7959	8590	8648	8554	8458
26	8444	8439	8407	8120	7401	6522	5788	5381	5279	5531	6136	7033	7958	8614	8664	8555	8444
27	8442	8435	8406	8134	7383	6471	5712	5288	5174	5439	6066	7008	7953	8641	8682	8555	8442
28	8446	8432	8411	8145	7362	6423	5634	5196	5070	5347	5993	6971	7952	8684	8698	8548	8446
29	8442	8429	8415	8153	7338	6373	5557	5093	4953	5257	5925	6941	7960	8711	8721	8546	8442
30	8438	8430	8426	8166	7320	6320	5473	4991	4847	5167	5860	6911	7968	8737	8751	8552	8438
31	8432	8438	8442	8177	7297	6265	5409	4887	4739	5067	5792	6873	7985	8757	8768	8559	8432
32	8432	8432	8457	8189	7286	6221	5333	4788	4625	4974	5726	6841	7996	8776	8789	8563	8432
33	8428	8437	8463	8188	7260	6166	5258	4685	4507	4876	5664	6813	8007	8802	8812	8565	8428
34	8419	8444	8469	8203	7240	6113	5185	4582	4393	4784	5596	6777	8022	8832	8834	8571	8419
35	8417	8454	8477	8213	7227	6060	5106	4473	4263	4685	5531	6749	8023	8856	8859	8573	8417
36	8428	8470	8495	8230	7224	6015	5030	4354	4143	4575	5464	6719	8028	8878	8875	8577	8428
37	8437	8484	8508	8247	7210	5971	4949	4237	4019	4481	5406	6687	8031	8902	8902	8586	8437
38	8452	8499	8524	8263	7193	5929	4880	4117	3896	4374	5336	6659	8041	8931	8927	8600	8452
39	8470	8516	8542	8270	7188	5881	4796	4001	3773	4264	5276	6625	8056	8960	8964	8624	8470
40	8485	8541	8566	8285	7175	5840	4715	3885	3639	4151	5206	6592	8063	8986	9004	8649	8485
41	8500	8565	8596	8301	7158	5791	4630	3770	3517	4023	5132	6556	8064	9012	9036	8673	8500
42	8516	8590	8620	8316	7151	5749	4542	3645	3406	3914	5050	6524	8070	9046	9074	8687	8516
43	8513	8615	8653	8324	7142	5710	4453	3529	3288	3808	4982	6500	8069	9070	9119	8720	8513
44	8506	8627	8685	8344	7136	5680	4358	3419	3187	3693	4898	6466	8079	9104	9150	8739	8506
45	8502	8655	8719	8360	7136	5638	4264	3297	3086	3584	4814	6441	8097	9137	9202	8765	8502
46	8482	8680	8759	8371	7130	5593	4164	3197	2986	3476	4717	6411	8112	9169	9247	8784	8482

47	8450	8688	8811	8390	7123	5549	4066	3101	2901	3372	4628	6386	8121	9202	9294	8791	8450
48	8400	8702	8853	8418	7106	5505	3966	3009	2814	3273	4528	6350	8118	9234	9349	8774	8400
49	8311	8698	8900	8456	7095	5467	3859	2921	2734	3176	4427	6318	8115	9278	9418	8754	8311
50	8190	8683	8962	8479	7084	5427	3757	2825	2660	3084	4331	6282	8114	9317	9473	8718	8190
51	8038	8661	9023	8502	7073	5374	3646	2743	2588	2992	4207	6248	8110	9357	9525	8658	8038
52	7826	8595	9085	8532	7064	5332	3545	2669	2516	2914	4097	6214	8120	9397	9580	8556	7826
53	7563	8506	9151	8567	7041	5282	3437	2601	2450	2829	3978	6179	8129	9435	9646	8417	7563
54	7215	8370	9230	8606	7022	5225	3326	2529	2385	2750	3869	6136	8134	9495	9701	8207	7215
55	6803	8180	9294	8643	7014	5178	3228	2463	2328	2681	3746	6100	8146	9550	9750	7950	6803
56	6353	7931	9349	8690	7014	5119	3131	2400	2265	2617	3638	6056	8166	9608	9783	7652	6353
57	5810	7634	9405	8734	7005	5053	3034	2341	2210	2542	3517	5997	8188	9676	9796	7281	5810
58	5274	7226	9445	8788	6986	4990	2941	2286	2149	2478	3415	5950	8192	9744	9805	6823	5274
59	4680	6750	9474	8840	6974	4910	2851	2224	2092	2412	3305	5901	8197	9813	9779	6299	4680
60	4088	6272	9496	8889	6961	4824	2766	2162	2036	2341	3192	5828	8218	9900	9709	5722	4088
61	3535	5706	9492	8952	6955	4735	2695	2107	1986	2272	3094	5759	8246	9985	9583	5121	3535
62	3097	5108	9452	9028	6947	4644	2609	2046	1913	2203	2991	5679	8279	10085	9424	4544	3097
63	2744	4530	9372	9106	6942	4534	2526	1989	1853	2132	2896	5592	8303	10174	9184	3915	2744
64	2418	3915	9245	9185	6955	4406	2456	1922	1791	2062	2786	5492	8328	10275	8898	3412	2418
65	2150	3372	9037	9288	6955	4284	2378	1850	1716	1986	2688	5378	8367	10400	8483	2987	2150
66	1945	2932	8767	9399	6974	4167	2303	1785	1645	1907	2579	5261	8425	10519	8012	2606	1945
67	1784	2575	8417	9518	6992	4048	2208	1704	1561	1829	2476	5133	8483	10656	7471	2304	1784
68	1634	2259	7996	9650	7016	3908	2125	1622	1463	1730	2370	4977	8554	10785	6893	2073	1634
69	1486	2021	7516	9822	7032	3776	2034	1528	1352	1638	2263	4820	8618	10931	6312	1869	1486
70	1370	1805	6923	9992	7065	3645	1948	1412	1231	1531	2150	4651	8628	11052	5625	1688	1370
71	1255	1633	6310	10187	7087	3498	1835	1299	1027	1390	2029	4462	8595	11176	4977	1541	1255
72	1158	1494	5683	10342	7099	3331	1734	1186	844	1260	1902	4219	8485	<b>11201</b>	4339	1406	1158
73	1019	1376	5093	10486	7074	3153	1620	1064	710	1149	1767	3955	8314	11137	3750	1284	1019
74	919	1240	4434	10574	6996	2954	1511	941	611	1049	1644	3658	7966	10987	3211	1173	919
75	827	1141	3844	10566	6861	2722	1360	787	545	931	1493	3320	7434	10720	2749	1060	827
76	720	1040	3286	10472	6645	2476	1216	655	490	836	1335	2984	6787	10278	2325	953	720
77	641	942	2774	10201	6275	2206	1098	553	434	705	1181	2624	5963	9683	1967	860	641
78	571	855	2318	9724	5840	1983	975	478	387	613	1021	2332	4999	8920	1674	758	571
79	496	758	1940	9037	5294	1773	853	415	345	522	875	2057	4033	7923	1417	674	496
80	436	685	1608	8133	4672	1565	721	353	294	440	751	1795	3140	6868	1184	598	436
81	375	604	1252	7051	3904	1353	619	307	256	368	618	1568	2284	5608	924	527	375
82	312	521	974	5762	3174	1162	529	249	223	308	493	1353	1513	4410	715	453	312
83	269	448	756	4459	2460	948	420	206	193	254	353	1124	928	3360	570	378	269
84	218	378	608	3204	1769	679	341	173	154	207	261	880	537	2476	431	317	218
85	169	289	447	2110	1193	498	246	135	122	152	196	611	338	1544	327	253	169
86	125	208	324	1274	721	332	169	101	92	118	139	349	202	863	219	192	125
87	76	146	199	644	430	208	94	71	62	79	103	202	120	403	138	122	76
88	56	55	113	280	253	113	37	46	42	52	69	109	68	113	55	51	56
89	37	36	60	92	130	61	37	32	25	33	53	67	49	76	40	40	37
90	31	38	52	59	64	40	19	18	19	33	45	60	41	64	37	38	31
91	34	33	46	59	47	36	21	22	21	38	45	49	41	54	37	32	34
92	32	29	44	50	52	40	19	19	21	28	46	47	43	42	32	29	32
93	33	29	35	33	48	32	18	26	12	29	46	49	38	40	27	34	33
94	24	26	41	44	44	32	22	18	17	27	47	46	35	37	27	33	24
95	17	32	30	38	43	31	24	19	13	30	36	45	31	41	22	26	17

96	13	26	34	30	39	33	21	18	20	30	47	44	28	30	26	32	13
97	28	28	31	21	24	27	20	0	18	22	36	45	26	32	20	28	28
98	25	27	29	29	36	26	19	19	18	26	46	38	27	33	16	22	25
99	20	25	28	31	35	31	26	22	16	24	32	44	19	23	16	32	20
100	21	25	26	25	37	24	18	22	15	29	35	35	22	31	21	29	21
101	30	23	27	22	35	25	23	15	14	26	42	34	17	22	16	21	30
102	27	23	26	25	37	28	23	19	13	22	36	35	21	21	16	28	27
103	28	24	29	20	33	31	22	15	0	27	35	37	16	20	24	27	28
104	21	19	21	26	31	29	19	19	14	21	38	35	21	19	0	12	21
105	20	18	20	16	17	30	29	22	12	27	38	34	17	15	16	24	20
106	24	18	25	27	29	35	23	20	14	23	43	33	14	16	17	21	24
107	22	20	22	17	22	32	23	18	16	27	33	29	19	21	17	22	22
108	20	17	22	19	29	21	17	21	13	21	36	24	17	17	0	23	20
109	21	16	24	17	29	23	24	20	12	15	37	34	16	13	12	21	21
110	21	12	24	19	28	31	16	14	15	21	43	33	19	15	0	23	21
111	28	21	24	20	27	34	20	22	17	18	37	25	0	14	0	16	28
112	22	17	21	20	20	30	21	12	15	23	39	39	0	12	14	21	22
113	20	18	22	19	26	31	20	19	19	24	31	29	12	13	0	28	20
114	20	20	20	16	34	33	16	24	14	24	32	30	0	16	0	19	20
115	22	18	22	17	31	25	20	26	21	19	30	31	18	11	12	21	22
116	21	20	20	13	30	31	20	26	18	18	33	34	18	16	15	18	21
117	25	13	20	0	32	25	18	22	19	25	30	30	17	0	0	23	25
118	25	17	17	13	29	23	25	25	25	21	30	29	13	16	0	15	25
119	24	24	21	18	28	26	18	23	21	22	31	29	19	0	11	16	24
120	14	19	20	11	30	20	21	26	16	27	32	28	15	16	12	19	14
121	13	20	22	15	26	19	20	26	18	20	31	29	21	0	12	14	13
122	21	0	16	13	25	27	23	20	19	20	25	23	12	13	0	21	21
123	15	15	17	0	22	26	16	16	15	23	26	25	0	13	11	14	15
124	17	0	21	14	29	25	22	25	15	14	27	24	19	0	0	22	17
125	18	17	17	0	32	22	19	25	17	16	32	29	15	21	0	15	18
126	17	16	21	20	22	23	23	22	22	24	29	28	13	16	12	18	17
127	13	17	21	12	24	28	13	23	16	21	26	32	0	0	0	17	13
128	14	11	21	14	21	18	19	25	20	22	23	22	14	18	13	16	14
129	0	14	16	19	23	24	23	24	17	19	25	25	13	0	13	12	0
130	18	21	23	13	25	22	17	23	19	25	28	28	20	0	0	17	18
131	0	14	16	14	17	22	19	24	22	18	31	26	15	13	0	13	0
132	0	15	19	18	22	20	16	24	18	19	28	22	12	22	0	17	0
133	0	17	24	13	17	19	21	23	19	25	27	21	12	12	0	11	0
134	24	16	15	16	19	28	17	25	21	19	27	22	20	12	0	19	24
135	12	17	21	0	21	16	12	19	17	24	23	25	12	19	0	18	12
136	18	0	21	14	16	21	17	19	21	19	28	17	14	0	0	15	18
137	13	16	16	14	18	22	13	18	14	27	16	22	14	17	11	16	13
138	13	21	23	19	21	23	22	25	19	21	19	18	12	0	0	16	13
139	0	15	20	15	21	19	14	21	16	28	24	24	0	11	15	21	0
140	15	17	22	18	19	18	21	26	17	22	26	19	17	22	16	20	15
141	17	18	21	19	23	24	16	22	19	19	25	20	0	0	0	23	17
142	0	13	25	18	18	23	15	22	16	22	22	18	15	16	0	19	0
143	15	0	18	21	17	20	13	16	20	28	20	19	17	17	0	19	15
144	14	22	27	12	25	21	16	24	21	23	22	19	11	16	0	24	14

145	0	20	25	17	23	22	20	25	22	22	18	23	20	16	0	0	0
146	12	21	22	20	20	17	14	20	16	20	27	21	20	16	12	19	12
147	13	15	27	25	22	17	15	27	20	26	21	26	11	19	0	16	13
148	14	17	23	19	20	18	19	22	16	23	16	21	11	20	16	20	14
149	18	19	24	19	23	25	15	27	17	24	27	13	14	17	0	24	18
150	13	16	25	17	19	22	17	24	14	21	18	24	20	13	0	17	13
151	14	17	22	21	20	17	14	28	17	26	28	23	17	17	0	18	14
152	13	20	25	16	14	17	0	23	17	20	27	20	17	17	16	22	13
153	17	18	23	26	25	21	23	22	20	20	23	20	15	15	15	21	17
154	12	23	22	21	29	21	16	18	24	20	25	17	20	27	0	14	12
155	18	20	28	14	22	15	17	29	20	23	23	29	18	18	0	13	18
156	12	23	28	18	19	26	15	25	16	19	23	23	21	22	0	17	12
157	14	20	25	24	11	19	18	16	22	21	29	20	19	20	15	20	14
158	12	23	24	16	17	13	0	28	23	25	29	20	24	17	12	17	12
159	13	23	29	24	13	20	15	21	15	21	27	19	21	15	13	21	13
160	14	17	22	16	22	20	20	19	22	25	32	19	23	16	11	22	14
161	15	16	23	22	20	19	17	22	21	20	24	22	17	21	20	23	15
162	15	16	21	22	22	19	15	32	18	20	26	15	17	16	0	16	15
163	13	26	19	27	21	20	21	23	22	21	26	17	16	19	15	14	13
164	18	14	25	18	17	21	17	24	19	22	24	21	18	15	0	17	18
165	14	20	25	15	26	22	20	20	22	23	26	20	20	19	15	22	14
166	0	18	20	22	25	29	19	30	21	25	23	24	19	22	0	23	0
167	14	23	26	21	27	24	20	18	21	24	24	21	21	20	12	21	14
168	18	15	27	13	19	27	23	22	13	25	28	26	14	19	16	20	18
169	12	16	22	25	11	21	15	23	21	21	25	27	22	19	12	21	12
170	0	20	25	20	20	22	14	29	24	24	31	28	19	19	15	17	0
171	12	21	24	20	19	21	17	19	23	15	24	21	20	17	15	19	12
172	14	20	22	19	24	21	16	25	14	29	23	17	19	22	0	22	14
173	0	26	26	16	21	15	18	28	20	21	28	21	22	25	15	22	0
174	12	22	24	20	18	20	0	22	18	23	26	19	20	23	15	21	12
175	16	23	21	19	21	20	17	24	19	23	25	22	19	25	0	18	16
176	17	21	24	21	25	23	14	27	11	16	22	17	22	13	14	17	17
177	0	21	26	24	19	22	16	23	16	17	25	18	23	19	0	19	0
178	17	23	20	16	21	16	18	22	18	16	26	15	17	20	0	24	17
179	14	19	21	15	26	22	14	12	14	21	24	15	12	22	0	21	14
180	16	24	28	25	22	19	19	16	16	20	23	17	19	16	12	17	16

**Luminaire Report Summary**

IESNA:LM-63-2002  
[TEST]  
[TESTLAB] Shenzhen Belling Test Laboratory  
[ISSUE DATE] 2018-5-2 09:25  
[MANUFAC] SARIN Energy Inc  
[LUMINAIRE] SES-SB7-4000-240-T3-480V  
[\_TOTALLUMINAIRELUMENS] 31051.5  
[VOLTAGE] 480.5 V  
[CURRENT] 0.532 A  
[POWERFACTOR] 0.990  
[TESTINST] GPM-3000  
[TESTDIST] 17.398 M  
[TESTTEMPERATURE] 25.4 'C  
[TESTHUMIDITY]  
[TESTOPERATOR]  
FILE: CANDELA MULTIPLIER: 1  
FILE: VERTICAL ANGLES: 181, HORIZONTAL ANGLES: 17  
FILE: COORDINATE SYSTEM: TYPE C  
FILE: UNIT OF MEASURE: METRIC  
FILE: BALLAST FACTOR: 1

Photometrics Pro 1.3.29 copyright 2003-2019 by jSolutions, Inc.  
Reported data calculated from manufacturer's data file, based on IES recommended methods.