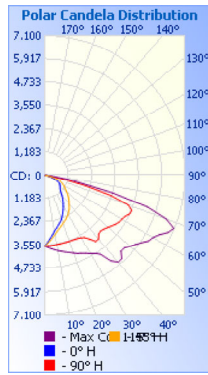


Photometrics Pro

Luminaire Photometric Report

Filename: Wall Pack WPP 120W
Manufacturer: SARIN Energy Inc.
Luminaire: SES-WPP-5700-120
Lamp Output: 1 lamp, rated Lumens/lamp: 15271
Max Candela: 7,091.6 at Horizontal: 115°, Vertical: 67.5°
Input Wattage: 123.5
Luminous Opening: Point
Test Date: 2016-07-22
Photometry: Type B
Nema Type: 7 X 6

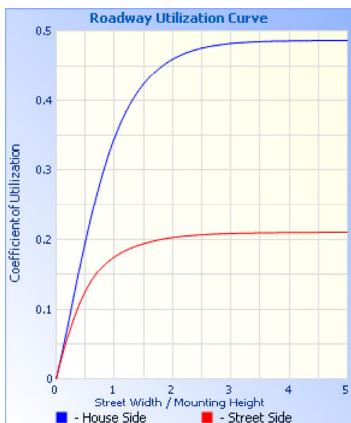
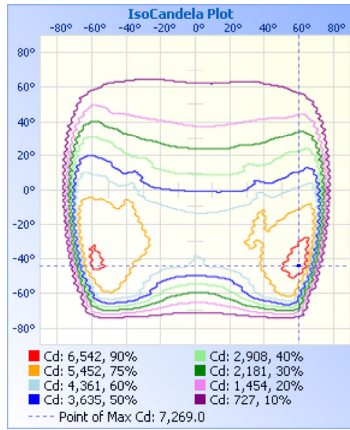
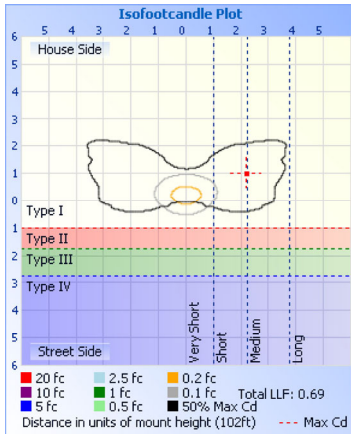


Roadway Summary			
Cutoff Classification:	CUTOFF		
Distribution:	TYPE I, SHORT		
Max Cd, 90 Deg Vert:	63.7		
Max Cd, 80 to <90 Deg:	1,461.6		
	Lumens	% Lamp	
Downward Street Side:	4,728.7	31%	
Downward House Side:	10,540.4	69%	
Downward Total:	15,269.2	100%	
Total Lumens:	15,269.2	100%	

Flood Summary			
	Efficiency	Lumens	Horizontal Spread
Field (10%):	97.7%	14,917.9	143.2
Beam (50%):	65.4%	9,980.2	134.2
Total:	100%	15,266.9	72.4

Zonal Lumen Summary			
Zone	Lumens	% Lamp	% Luminaire
0-30	3,002.4	19.7%	19.7%
0-40	5,284.1	34.6%	34.6%
0-60	10,998.3	72%	72%
60-90	4,271.0	28%	28%
0-90	15,269.3	100%	100%

Lumens Per Zone		
Zone	Lumens	% Total
0-10	343.7	2.3%
10-20	1,015.0	6.6%
20-30	1,643.7	10.8%
30-40	2,281.7	14.9%
40-50	2,750.4	18.0%
50-60	2,963.8	19.4%
60-70	2,880.4	18.9%
70-80	1,290.4	8.5%
80-90	100.2	0.7%



Height	Illuminance at a Distance	
	Center Beam fc	Beam Width
16.7ft	13.0 fc	24.5 ft 79.1 ft
33.3ft	3.26 fc	48.8 ft 157.8 ft
50.0ft	1.45 fc	73.2 ft 237.0 ft
66.7ft	0.81 fc	97.7 ft 316.1 ft
83.3ft	0.52 fc	122.0 ft 394.8 ft
100.0ft	0.36 fc	146.4 ft 473.9 ft

Vert. Spread: 72.4°
 Horiz. Spread: 134.2°

Coefficients of Utilization - Zonal Cavity Method
 Effective Floor Cavity Reflectance: 20%

RCC %:	80				70				50				30				10				0			
RW %:	70	50	30	0	70	50	30	0	50	30	20	0	50	30	20	0	50	30	20	0	0	0	0	0
RCC: 0	1.19	1.19	1.19	1.19	1.16	1.16	1.16	1.00	1.11	1.11	1.11	1.11	1.06	1.06	1.06	1.02	1.02	1.02	1.02	1.02	1.00			
1	1.08	1.03	.98	.94	1.05	1.01	.96	.83	.96	.93	.90		.92	.90	.87		.89	.87	.84		.82			
2	.97	.88	.81	.74	.94	.86	.79	.68	.82	.77	.72		.79	.74	.70		.76	.72	.68		.66			
3	.87	.76	.67	.60	.85	.74	.66	.56	.71	.64	.58		.68	.62	.57		.66	.60	.56		.54			
4	.79	.66	.56	.49	.77	.65	.56	.46	.62	.54	.48		.60	.53	.47		.57	.52	.47		.44			
5	.72	.58	.48	.41	.70	.57	.48	.39	.55	.47	.40		.53	.46	.40		.51	.45	.40		.37			
6	.66	.52	.42	.35	.64	.51	.42	.34	.49	.41	.35		.47	.40	.34		.45	.39	.34		.32			
7	.61	.46	.37	.30	.59	.46	.37	.29	.44	.36	.30		.42	.35	.30		.41	.35	.30		.27			
8	.56	.42	.33	.27	.55	.41	.33	.26	.40	.32	.26		.39	.31	.26		.37	.31	.26		.24			
9	.53	.38	.30	.24	.51	.38	.29	.23	.36	.29	.23		.35	.28	.23		.34	.28	.23		.21			
10	.49	.35	.27	.21	.48	.35	.27	.21	.34	.26	.21		.33	.26	.21		.32	.25	.21		.19			

Candela Table - Type B

Table with 32 columns (labeled -90 to -50) and 32 rows (labeled 90 to -68). Each cell contains a numerical value representing photometric data.

-70	15	15	17	19	22	25	28	32	36	38	40	42	45	49	54	61	68	76	85	102	131	173	239	338	466	618	789	975	1165	1344	1502	1633	1740	1828	1893	1938	1970	1990	2003	2016	2023
-72	16	15	15	15	16	18	21	24	28	32	35	37	38	39	41	44	48	54	60	67	75	87	106	133	174	235	315	410	515	631	750	863	964	1049	1121	1182	1231	1269	1298	1318	1332
-74	15	15	16	18	20	23	27	31	34	35	35	36	36	38	42	47	53	59	65	73	81	93	110	133	164	201	242	288	335	382	425	465	502	537	569	599	625	646	660	670	673
-76	16	15	15	15	16	17	19	22	26	29	32	33	33	33	34	37	42	47	52	57	62	65	69	73	78	84	91	100	110	120	133	147	163	181	201	224	248	271	291	305	
-78	15	15	16	17	18	21	24	27	29	30	30	30	31	34	37	42	46	51	55	58	61	65	69	74	81	88	96	106	117	129	143	158	176	195	216	236	253	264	271	273	
-80	16	16	15	15	16	17	18	20	22	25	27	27	27	27	27	28	30	33	37	41	45	48	51	53	56	60	65	70	76	83	91	100	111	122	135	150	166	184	201	215	224
-82	15	15	16	16	17	19	21	23	24	25	25	24	24	25	27	29	32	35	39	41	43	46	48	51	55	59	64	70	77	84	93	102	113	125	138	152	165	176	184	189	190
-84	16	16	15	15	16	16	17	18	19	21	22	22	22	22	22	22	23	25	28	30	32	34	36	38	40	42	45	48	52	57	62	68	75	82	90	99	109	119	130	138	144
-86	15	15	16	16	16	17	18	19	19	19	19	19	19	19	20	21	23	24	26	28	29	30	32	33	35	38	40	44	47	52	56	62	67	73	80	87	94	100	104	106	107
-88	16	16	15	15	16	16	16	16	16	16	17	17	16	16	16	16	17	17	18	19	20	21	22	22	23	24	26	27	29	31	33	35	38	41	44	48	51	55	59	62	64
-90	16	15	15	16	15	15	15	14	14	14	14	14	13	13	13	13	13	13	14	14	14	15	15	15	16	16	17	17	18	19	20	21	22	23	23	23	23	24	24	24	24

Luminaire Report Summary

IESNA: LM-63-2002
[TEST]
[TESTDATE] 2016-07-22
[TESTLAB]
[ISSUEDATE] 2016-07-27 09:12:12
[MANUFAC] SARIN Energy Inc.
[LUMINAIRE] SES-WPP-5700-120
[_TOTALLUMINAIRELUMENS] 15266.9
[_LAMPPOSITION] 0,0
[OTHER] EVERFINE GO-2000B_V1 SYSTEM
FILE: CANDELA MULTIPLIER: 1
FILE: VERTICAL ANGLES: 91, HORIZONTAL ANGLES: 181
FILE: COORDINATE SYSTEM: TYPE B
FILE: UNIT OF MEASURE: METRIC
FILE: BALLAST FACTOR: 1

Photometrics Pro 1.3.29 copyright 2003-2019 by jSolutions, Inc.
Reported data calculated from manufacturer's data file, based on IES recommended methods.