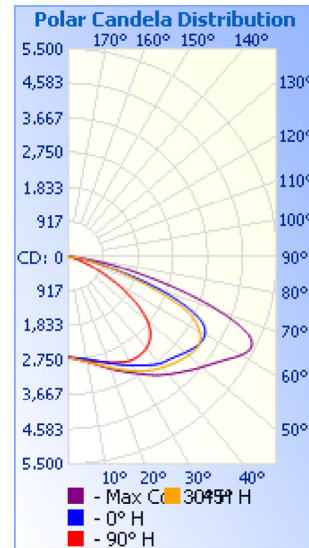


# Photometrics Pro

## Luminaire Photometric Report

**Filename:** Solar Street Light SLSLK 80W  
**Manufacturer:** SARIN Energy Inc  
**Luminaire:** SES-SLSLK-80-6000  
**Lamp Output:** 1 lamp, rated Lumens/lamp: 11711.1  
**Max Candela:** 5,416.3 at Horizontal: 30°, Vertical: 63°  
**Input Wattage:** 79.87  
**Luminous Opening:** Point  
**Test Date:** 2018-08-27  
**Test Lab:** EVERFINE  
**Photometry :** Type C  
**Nema Type:** 5 X 7



### Roadway Summary

Cutoff Classification:	CUTOFF
Distribution:	TYPE IV, VERY SHORT
Max Cd, 90 Deg Vert:	59.7
Max Cd, 80 to <90 Deg:	1,048.0
	Lumens % Lamp
Downward Street Side:	5,957.5 50.9%
Downward House Side:	5,696.8 48.6%
Downward Total:	11,654.3 99.5%
Upward Street Side:	28.7 0.2%
Upward House Side:	28.1 0.2%
Upward Total:	56.8 0.5%
Total Lumens:	11,711.1 100%

### Flood Summary

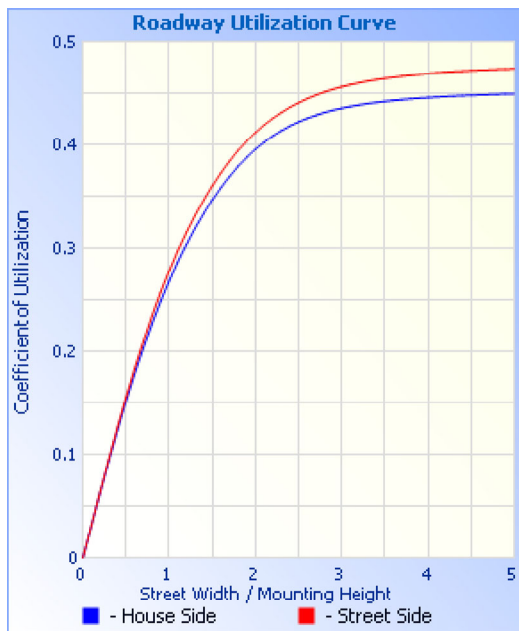
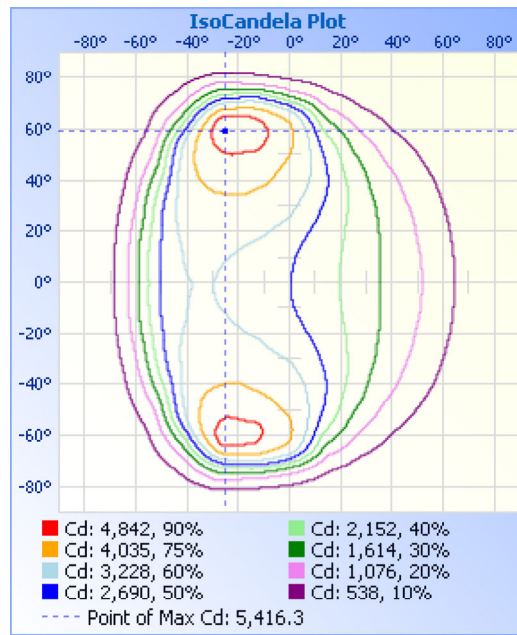
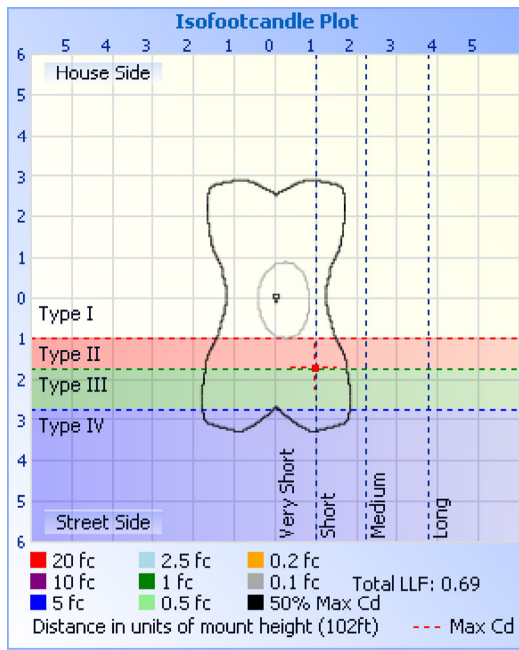
	Efficiency	Lumens	Horizontal Spread	Vertical Spread
Field (10%):	96.4%	11,284.3	96.5	162.9
Beam (50%):	65.4%	7,656.8	50.7	143
Total:	100%	11,706.6		

### Zonal Lumen Summary

Zone	Lumens	% Lamp	% Luminaire
0-30	2,319.7	19.8%	19.8%
0-40	4,131.2	35.3%	35.3%
0-60	8,747.5	74.7%	74.7%
60-90	2,905.9	24.8%	24.8%
70-100	960.7	8.2%	8.2%
90-120	26.4	0.2%	0.2%
0-90	11,653.4	99.5%	99.5%
90-180	56.8	0.5%	0.5%
0-180	11,710.2	100%	100%

### Lumens Per Zone

Zone	Lumens	% Total	Zone	Lumens	% Total
0-10	255.3	2.2%	90-100	10.8	0.1%
10-20	768.8	6.6%	100-110	7.6	0.1%
20-30	1,295.6	11.1%	110-120	8.1	0.1%
30-40	1,811.5	15.5%	120-130	8.7	0.1%
40-50	2,224.4	19.0%	130-140	7.9	0.1%
50-60	2,391.9	20.4%	140-150	6.0	0.1%
60-70	1,956.0	16.7%	150-160	4.3	0%
70-80	792.3	6.8%	160-170	2.6	0%
80-90	157.6	1.3%	170-180	0.9	0%



**Illuminance at a Distance**

Distance (ft)	Center Beam fc	Beam Width	Illuminance (fc)
16.7ft	9.67 fc	99.7 ft	15.8 ft
33.3ft	2.43 fc	198.9 ft	31.6 ft
50.0ft	1.08 fc	298.6 ft	47.4 ft
66.7ft	0.61 fc	398.4 ft	63.2 ft
83.3ft	0.39 fc	497.5 ft	79.0 ft
100.0ft	0.27 fc	597.2 ft	94.8 ft

Vert. Spread: 143.0°  
Horiz. Spread: 50.7°

**Coefficients Of Utilization - Zonal Cavity Method**

Effective Floor Cavity Reflectance: 20%

RCC %:	80				70				50			30			10			0
RW %:	70	50	30	0	70	50	30	0	50	30	20	50	30	20	50	30	20	0
RCR: 0	1.19	1.19	1.19	1.19	1.16	1.16	1.16	1.00	1.11	1.11	1.11	1.06	1.06	1.06	1.02	1.02	1.02	1.00
1	1.08	1.03	.99	.95	1.05	1.01	.97	.83	.96	.93	.90	.92	.90	.87	.89	.86	.84	.82
2	.97	.89	.81	.75	.95	.87	.80	.68	.83	.77	.72	.79	.75	.71	.76	.72	.69	.67
3	.88	.77	.68	.61	.85	.75	.67	.56	.72	.65	.59	.69	.63	.58	.66	.61	.57	.55
4	.80	.67	.57	.50	.77	.65	.57	.47	.63	.55	.49	.60	.54	.48	.58	.52	.48	.45
5	.73	.59	.49	.42	.70	.58	.49	.40	.55	.47	.41	.53	.46	.41	.51	.45	.40	.38
6	.67	.52	.43	.36	.65	.51	.42	.34	.49	.41	.35	.48	.40	.35	.46	.40	.35	.32
7	.61	.47	.38	.31	.59	.46	.37	.30	.44	.36	.31	.43	.36	.30	.41	.35	.30	.28
8	.57	.42	.33	.27	.55	.42	.33	.26	.40	.32	.27	.39	.32	.27	.38	.31	.26	.24
9	.53	.39	.30	.24	.51	.38	.30	.23	.37	.29	.24	.36	.29	.24	.35	.28	.24	.22

10 | .49 .35 .27 .22 | .48 .35 .27 .21 | .34 .26 .21 | .33 .26 .21 | .32 .26 .21 | .19

Candela Table - Type C

	0	15	30	45	60	75	90	105	120	135	150	165	180	195	210	225	240	255	270	285	300	315	330	345	360
0	2696	2681	2694	2688	2685	2677	2673	2664	2664	2644	2645	2627	2696	2681	2694	2688	2685	2677	2673	2664	2664	2644	2645	2627	2696
1	2699	2688	2706	2704	2704	2696	2693	2683	2681	2658	2655	2631	2694	2674	2682	2673	2667	2656	2651	2643	2645	2630	2636	2623	2699
2	2704	2698	2719	2719	2721	2715	2713	2702	2698	2672	2666	2636	2693	2668	2671	2656	2647	2633	2629	2621	2627	2615	2627	2621	2704
3	2710	2709	2734	2736	2739	2733	2730	2720	2715	2687	2677	2642	2694	2663	2660	2641	2628	2611	2605	2598	2608	2602	2620	2619	2710
4	2717	2720	2749	2753	2756	2751	2748	2738	2732	2702	2689	2649	2696	2659	2650	2626	2607	2588	2581	2576	2588	2588	2612	2619	2717
5	2725	2733	2765	2770	2774	2768	2765	2754	2748	2717	2703	2658	2699	2657	2641	2610	2586	2563	2556	2551	2568	2573	2605	2621	2725
6	2736	2748	2782	2788	2792	2785	2781	2770	2765	2733	2717	2669	2704	2656	2632	2595	2565	2538	2530	2527	2548	2560	2599	2623	2736
7	2747	2764	2801	2806	2809	2802	2797	2787	2781	2750	2733	2681	2710	2656	2624	2580	2544	2513	2502	2502	2527	2546	2593	2626	2747
8	2760	2782	2821	2826	2827	2818	2812	2803	2798	2767	2749	2694	2718	2657	2617	2565	2523	2486	2475	2476	2506	2532	2588	2630	2760
9	2774	2803	2842	2847	2846	2834	2827	2818	2815	2785	2767	2709	2726	2658	2611	2549	2500	2459	2447	2448	2485	2518	2584	2635	2774
10	2789	2821	2866	2868	2865	2850	2843	2834	2833	2804	2786	2724	2737	2660	2605	2534	2477	2432	2418	2422	2463	2505	2579	2641	2789
11	2807	2844	2891	2892	2885	2867	2858	2850	2851	2824	2806	2741	2748	2665	2599	2519	2455	2404	2389	2394	2441	2491	2576	2647	2807
12	2825	2869	2918	2916	2905	2884	2873	2866	2870	2845	2828	2760	2761	2670	2593	2504	2432	2375	2358	2366	2418	2477	2573	2655	2825
13	2846	2896	2946	2942	2927	2901	2889	2882	2890	2867	2851	2781	2775	2675	2588	2489	2409	2348	2329	2339	2396	2463	2570	2664	2846
14	2867	2924	2977	2970	2949	2919	2905	2899	2910	2891	2876	2803	2791	2681	2583	2474	2385	2318	2298	2310	2373	2449	2568	2673	2867
15	2891	2954	3009	2999	2973	2937	2921	2917	2931	2915	2902	2827	2808	2688	2579	2458	2361	2290	2268	2281	2349	2434	2565	2684	2891
16	2916	2985	3043	3028	2997	2956	2939	2936	2952	2939	2930	2853	2826	2696	2574	2443	2337	2261	2237	2253	2326	2421	2563	2696	2916
17	2942	3019	3078	3058	3022	2976	2956	2955	2974	2965	2958	2879	2846	2705	2570	2428	2313	2231	2206	2223	2302	2406	2561	2709	2942
18	2969	3054	3114	3090	3048	2997	2975	2974	2997	2992	2989	2907	2867	2715	2566	2412	2289	2202	2176	2194	2278	2391	2559	2721	2969
19	2998	3089	3150	3122	3074	3019	2995	2994	3020	3019	3019	2935	2889	2725	2563	2397	2264	2173	2145	2166	2254	2377	2558	2736	2998
20	3028	3126	3188	3155	3102	3042	3016	3015	3044	3047	3051	2965	2913	2736	2559	2381	2239	2143	2114	2135	2229	2361	2556	2750	3028
21	3058	3165	3226	3190	3130	3066	3037	3037	3068	3077	3083	2994	2937	2749	2557	2364	2214	2113	2083	2106	2204	2346	2554	2764	3058
22	3089	3203	3265	3224	3160	3089	3059	3059	3093	3107	3117	3027	2962	2760	2553	2348	2188	2083	2052	2076	2179	2330	2552	2780	3089
23	3120	3242	3304	3260	3189	3114	3081	3081	3119	3138	3151	3061	2988	2772	2550	2331	2162	2052	2021	2046	2153	2314	2550	2796	3120
24	3152	3281	3344	3296	3219	3138	3103	3104	3146	3169	3186	3095	3015	2784	2546	2313	2135	2022	1989	2016	2127	2296	2548	2812	3152
25	3185	3320	3386	3334	3250	3163	3125	3127	3173	3202	3223	3130	3043	2796	2542	2295	2108	1990	1956	1985	2100	2279	2545	2827	3185
26	3218	3363	3427	3372	3280	3188	3148	3150	3200	3235	3260	3168	3073	2809	2537	2275	2079	1958	1923	1953	2072	2259	2542	2843	3218
27	3253	3406	3471	3410	3311	3213	3170	3173	3228	3269	3300	3206	3103	2822	2533	2256	2051	1926	1890	1922	2044	2240	2538	2859	3253
28	3289	3449	3515	3449	3342	3238	3191	3196	3257	3304	3340	3244	3134	2835	2527	2234	2021	1893	1856	1889	2016	2219	2534	2876	3289
29	3324	3495	3560	3489	3373	3261	3209	3217	3283	3340	3382	3285	3165	2849	2521	2212	1991	1859	1821	1856	1987	2198	2529	2892	3324
30	3361	3542	3607	3529	3403	3282	3225	3236	3310	3376	3426	3327	3197	2861	2514	2188	1960	1825	1786	1822	1957	2175	2522	2909	3361
31	3398	3590	3656	3570	3431	3300	3236	3251	3334	3414	3470	3371	3231	2875	2506	2164	1928	1791	1751	1789	1927	2152	2514	2926	3398
32	3435	3640	3706	3610	3456	3312	3243	3261	3355	3451	3517	3418	3266	2888	2497	2137	1895	1756	1715	1754	1896	2127	2506	2943	3435
33	3473	3688	3758	3649	3477	3321	3246	3268	3373	3486	3564	3465	3301	2901	2486	2110	1862	1721	1680	1720	1864	2102	2496	2960	3473
34	3511	3741	3811	3686	3494	3326	3247	3272	3387	3520	3612	3514	3337	2914	2474	2081	1829	1687	1645	1686	1832	2075	2485	2974	3511
35	3550	3795	3863	3721	3509	3329	3246	3274	3400	3552	3659	3564	3373	2926	2460	2050	1795	1652	1610	1651	1800	2046	2473	2988	3550
36	3589	3849	3914	3752	3521	3330	3244	3275	3410	3581	3705	3613	3413	2937	2444	2018	1760	1617	1574	1617	1766	2018	2458	3002	3589
37	3630	3904	3964	3783	3533	3330	3239	3274	3421	3610	3751	3662	3450	2949	2426	1984	1726	1581	1539	1582	1732	1987	2441	3016	3630
38	3670	3956	4010	3811	3542	3327	3231	3271	3430	3637	3796	3709	3489	2958	2407	1949	1691	1546	1504	1547	1699	1956	2423	3027	3670
39	3708	4006	4057	3840	3550	3321	3220	3265	3437	3664	3842	3757	3525	2967	2384	1913	1655	1510	1470	1511	1663	1921	2402	3038	3708
40	3741	4054	4102	3869	3557	3312	3206	3257	3443	3692	3888	3804	3558	2973	2359	1875	1619	1475	1436	1477	1627	1886	2377	3046	3741
41	3770	4102	4149	3897	3563	3299	3188	3245	3448	3719	3937	3854	3588	2973	2330	1837	1582	1440	1403	1442	1590	1847	2348	3048	3770
42	3793	4147	4198	3925	3565	3283	3164	3229	3451	3747	3987	3905	3617	2969	2297	1797	1544	1406	1372	1408	1554	1808	2315	3045	3793
43	3814	4197	4243	3954	3565	3261	3136	3208	3451	3774	4040	3962	3646	2960	2260	1755	1506	1371	1340	1375	1516	1767	2278	3034	3814
44	3834	4249	4289	3981	3562	3234	3101	3182	3447	3801	4094	4022	3679	2948	2220	1713	1467	1337	1310	1342	1479	1726	2238	3018	3834
45	3858	4305	4337	4008	3555	3201	3060	3151	3440	3828	4151	4084	3713	2934	2177	1670	1427	1303	1280	1308	1441	1684	2197	2997	3858
46	3885	4363	4389	4035	3543	3162	3013	3113	3427	3854	4204	4151	3747	2918	2132	1626	1387	1270	1249	1276	1403	1642	2152	2975	3885
47	3915	4426	4442	4061	3526	3117	2960	3070	3410	3879	4258	4220	3784	2897	2083	1580	1348	1236	1219	1242	1364	1600	2106	2949	3915
48	3947	4491	4496	4086	3503	3065	2899	3018	3386	3903	4311	4293	3823	2874	2033	1534	1307	1201	1188	1208	1325	1555	2056	2920	3947
49	3980	4560	4548	4109	3474	3006	2831	2959	3356	3926	4368	4366	3862	2844	1979	1486	1265	1166	1156	1174	1284	1511	2005	2889	3980
50	4013	4630	4601	4132	3438	2939	2751	2890	3317	3947	4428	4441	3901	2810	19										

53	4112	4843	4770	4184	3280	2670	2448	2614	3137	3991	4615	4664	4018	2667	1745	1284	1092	1017	1018	1028	1115	1319	1782	2720	4112	
54	4142	4908	4831	4191	3206	2557	2327	2497	3052	3995	4683	4736	4054	2606	1681	1230	1045	977	980	988	1070	1267	1720	2664	4142	
55	4167	4972	4897	4191	3117	2433	2197	2373	2950	3989	4755	4802	4086	2537	1614	1176	998	935	940	947	1024	1215	1657	2604	4167	
56	4184	5029	4968	4181	3014	2301	2066	2240	2836	3972	4831	4858	4113	2461	1546	1120	951	893	898	905	978	1161	1592	2535	4184	
57	4197	5082	5042	4158	2892	2160	1929	2099	2704	3942	4911	4908	4130	2378	1474	1063	901	848	854	862	930	1107	1525	2459	4197	
58	4201	5120	5122	4122	2752	2017	1793	1958	2558	3899	4993	4946	4138	2288	1403	1005	852	803	810	817	882	1052	1457	2376	4201	
59	4194	5150	5204	4071	2594	1872	1655	1815	2395	3840	5077	4970	4135	2190	1328	946	802	757	765	771	833	995	1387	2286	4194	
60	4173	5164	5280	4007	2423	1729	1518	1674	2226	3771	5154	4977	4115	2087	1253	887	752	711	719	725	783	938	1316	2190	4173	
61	4139	5160	5347	3930	2250	1585	1382	1534	2055	3689	5217	4967	4078	1976	1177	828	703	665	674	680	734	879	1245	2086	4139	
62	4086	5143	5396	3845	2075	1444	1247	1394	1886	3592	5255	4933	4017	1862	1101	770	654	621	629	635	685	822	1172	1978	4086	
63	4009	5102	5416	3747	1905	1302	1112	1255	1720	3469	5258	4869	3924	1748	1026	712	607	577	587	591	637	765	1100	1867	4009	
64	3899	5030	5404	3623	1737	1163	987	1117	1561	3308	5221	4770	3793	1634	951	657	561	535	544	549	591	709	1026	1756	3899	
65	3746	4928	5347	3462	1566	1028	867	986	1399	3095	5128	4629	3619	1503	877	604	518	493	502	507	546	654	954	1645	3746	
66	3561	4788	5245	3249	1399	903	765	864	1245	2823	4973	4452	3414	1372	805	554	476	454	461	467	504	602	883	1522	3561	
67	3344	4616	5081	2976	1236	794	676	760	1096	2537	4739	4227	3179	1240	734	506	437	415	406	427	463	551	814	1391	3344	
68	3100	4382	4852	2683	1083	699	600	670	961	2272	4454	4001	2921	1116	667	463	403	378	350	390	426	505	745	1267	3100	
69	2840	4148	4562	2402	947	618	521	592	842	2026	4127	3710	2641	998	603	422	368	338	295	348	390	461	678	1145	2840	
70	2557	3913	4233	2136	830	548	447	524	739	1793	3780	3391	2338	892	543	384	334	293	246	300	355	422	613	1028	2557	
71	2248	3604	3884	1883	729	481	384	459	651	1572	3410	3034	2016	797	489	350	305	250	211	254	324	384	555	921	2248	
72	1930	3274	3519	1648	643	428	331	404	574	1369	3012	2646	1690	712	440	318	279	213	185	215	296	350	499	824	1930	
73	1610	2908	3126	1432	568	375	286	350	506	1184	2607	2242	1412	637	397	288	255	186	165	188	270	318	449	737	1610	
74	1347	2513	2718	1237	503	323	248	307	449	1024	2237	1878	1199	572	355	261	233	159	150	161	247	289	408	660	1347	
75	1141	2113	2335	1064	448	283	216	269	399	886	1925	1545	1030	512	317	236	211	139	136	141	223	261	366	589	1141	
76	977	1742	2000	915	400	249	192	237	357	767	1673	1284	881	459	284	212	191	121	122	124	202	236	324	529	977	
77	834	1422	1733	788	358	219	167	208	319	661	1422	1050	746	409	253	192	171	106	112	109	181	212	290	472	834	
78	705	1157	1466	678	318	193	148	184	284	569	1212	873	632	366	227	171	150	96	106	98	160	192	260	422	705	
79	594	935	1240	583	282	170	132	162	252	489	1029	732	526	326	202	153	131	87	102	89	140	171	232	376	594	
80	498	767	1048	500	249	151	118	143	223	422	843	618	442	290	176	135	114	79	99	82	122	153	206	335	498	
81	412	638	868	431	220	135	107	129	202	355	666	525	359	257	144	117	99	73	95	75	107	135	182	297	412	
82	336	534	688	361	198	122	99	117	180	289	524	449	276	226	115	101	86	69	92	70	93	117	149	263	336	
83	269	458	540	292	175	111	91	107	159	240	415	373	213	194	93	87	76	67	91	68	81	102	121	233	269	
84	208	382	420	239	156	101	81	96	140	197	328	297	156	163	74	74	67	62	84	64	72	88	97	204	208	
85	161	306	332	197	136	91	70	86	121	159	262	228	112	131	58	62	58	55	74	59	65	75	76	176	161	
86	115	247	262	159	117	80	60	77	102	125	202	166	76	97	47	51	48	47	59	52	56	64	61	147	115	
87	80	184	206	126	97	70	50	67	81	94	149	116	49	69	37	38	36	37	45	42	46	53	48	111	80	
88	52	132	156	95	74	60	40	56	59	65	96	71	29	46	28	23	22	24	34	30	33	41	39	81	52	
89	31	90	106	67	51	45	30	40	40	41	57	40	20	30	16	11	11	12	21	18	21	28	31	57	31	
90	18	51	60	40	36	34	25	32	32	30	31	25	16	16	10	6	4	2	6	6	10	14	22	38	18	
91	15	30	33	28	29	30	25	29	27	22	19	15	13	11	7	4	2	1	1	1	3	7	13	24	15	
92	13	19	20	21	25	27	25	27	23	17	10	7	9	8	6	3	1	1	1	1	2	5	9	14	13	
93	10	12	12	16	21	25	25	25	20	14	7	4	3	5	5	3	1	1	1	1	1	4	7	10	10	
94	4	4	8	13	18	24	26	24	18	12	7	4	3	5	5	3	2	1	1	1	1	3	5	7	4	
95	3	3	7	11	17	23	26	23	16	10	6	4	3	5	5	3	2	1	1	1	2	3	5	5	3	
96	4	3	6	10	15	21	25	22	15	10	6	4	4	5	5	4	2	1	1	1	2	3	5	5	4	
97	4	4	5	9	14	19	24	20	14	9	5	4	4	6	6	4	2	1	1	1	2	4	5	5	4	
98	4	4	5	9	14	18	23	19	14	9	5	4	4	6	6	5	2	2	1	1	2	4	5	6	4	
99	5	4	5	9	13	17	22	18	14	9	5	4	5	7	6	5	3	2	1	2	2	4	6	6	5	
100	5	4	5	8	13	17	22	18	13	8	5	4	5	7	7	5	3	2	2	2	3	5	6	6	5	
101	5	4	5	8	12	16	20	16	12	8	5	4	5	7	7	6	3	2	2	2	3	5	7	7	5	
102	6	4	5	8	11	14	19	15	11	8	5	5	6	8	8	6	4	2	2	2	3	5	7	7	6	
103	6	4	5	8	11	13	17	14	11	8	5	5	6	8	8	6	4	3	2	2	3	6	7	8	6	
104	7	5	5	8	10	12	15	13	10	8	5	5	6	9	8	7	4	3	2	3	4	6	8	8	7	
105	7	5	5	7	10	12	13	12	10	7	5	5	7	9	9	7	5	3	3	3	4	6	8	8	7	
106	7	5	5	7	9	11	12	11	9	7	5	5	7	9	9	7	5	3	3	3	4	7	8	9	7	
107	8	5	4	6	9	11	12	11	9	6	5	6	8	10	9	8	5	4	3	3	5	7	9	9	8	
108																										

	8	5	4	6	8	10	11	10	8	6	4	6	8	10	9	8	6	4	3	4	5	7	9	9	8	
109	8	6	4	6	8	10	11	10	8	7	4	6	8	10	10	8	6	4	4	4	5	8	9	10	8	
110	8	6	4	6	8	9	10	10	8	7	5	6	8	10	10	9	6	4	4	4	6	8	10	10	8	
111	9	6	4	6	8	9	10	9	8	6	5	7	9	11	10	9	6	5	4	5	6	8	10	10	9	
112	9	6	4	6	8	9	10	9	8	6	5	7	9	11	10	9	7	5	4	5	6	9	10	10	9	
113	9	7	5	6	8	9	10	9	8	6	5	7	9	11	11	9	7	5	5	5	7	9	10	11	9	
114	9	7	5	5	8	9	9	9	8	6	5	7	9	11	11	10	7	6	5	5	7	9	10	11	9	
115	10	7	5	5	8	9	11	9	8	6	5	8	10	11	11	10	8	6	5	6	7	9	11	11	10	
116	10	7	6	5	8	9	10	9	8	6	6	8	10	12	12	10	8	7	7	6	8	9	11	11	10	
117	10	8	6	5	7	9	9	9	8	6	6	8	10	12	12	10	8	7	8	7	8	10	11	11	10	
118	10	8	6	4	7	9	9	9	8	6	6	8	10	12	12	10	9	7	9	7	8	10	11	11	10	
119	10	8	6	4	7	9	9	9	7	5	6	8	10	12	12	11	9	8	10	7	8	10	12	12	10	
120	10	8	6	4	7	9	11	10	7	5	6	8	10	12	12	11	9	8	10	8	9	10	12	12	10	
121	11	8	6	5	7	9	13	10	7	5	7	9	11	12	13	11	9	9	11	8	9	11	12	12	11	
122	11	9	6	5	7	9	13	9	7	5	7	9	11	12	13	11	10	9	12	9	9	11	12	12	11	
123	11	9	7	6	6	9	13	9	7	6	7	9	11	13	13	11	10	10	12	9	9	11	12	12	11	
124	11	9	7	7	5	9	13	9	6	6	7	9	11	13	13	12	10	10	13	10	10	12	13	12	11	
125	11	9	7	7	5	10	13	9	5	6	7	9	11	13	13	12	10	10	13	10	10	12	13	12	11	
126	11	9	7	7	6	9	12	10	6	7	7	9	11	13	13	12	10	11	13	11	10	12	13	12	11	
127	11	9	7	7	7	7	12	8	7	7	7	9	11	13	13	12	11	11	13	11	11	12	13	12	11	
128	11	9	8	7	7	7	9	7	7	7	7	9	11	13	13	12	11	11	13	12	11	12	13	12	11	
129	11	9	8	7	8	7	8	7	7	7	7	9	11	13	13	12	11	11	13	11	11	12	13	12	11	
130	11	9	8	7	9	8	8	7	8	7	7	9	11	13	13	12	11	11	12	11	11	12	13	12	11	
131	11	9	8	6	9	8	8	8	9	7	8	9	11	13	13	11	11	10	11	11	12	12	13	12	11	
132	11	9	8	6	9	8	8	8	9	7	8	9	11	13	13	12	12	11	11	11	12	12	13	12	11	
133	11	9	8	6	9	10	8	9	9	6	8	9	11	13	12	12	12	11	11	12	13	12	13	12	11	
134	11	9	8	6	9	11	10	10	9	6	8	9	11	13	12	12	11	11	11	12	12	12	12	12	11	
135	11	9	8	6	9	11	11	10	9	6	8	9	11	12	12	12	11	12	11	13	12	12	12	12	11	
136	11	9	9	6	9	11	11	10	9	6	8	9	11	12	12	12	11	12	12	13	12	13	12	11	11	
137	11	9	9	6	6	11	11	10	9	6	8	9	11	12	12	12	11	11	13	11	12	13	12	11	11	
138	11	9	9	7	5	10	11	10	6	6	8	9	11	12	12	12	11	11	12	11	12	13	12	11	11	
139	11	9	9	7	5	10	11	10	6	6	8	9	11	12	12	12	11	11	11	11	12	12	12	11	11	
140	11	9	8	8	6	9	11	10	6	7	8	9	11	12	12	12	11	11	11	11	12	12	12	11	11	
141	10	9	8	8	6	6	10	6	6	8	8	9	11	11	11	12	11	11	11	11	12	12	11	11	10	
142	10	9	8	8	6	5	6	5	6	8	8	9	10	11	11	11	11	11	11	11	13	12	11	11	10	
143	10	9	8	8	6	6	5	5	6	8	8	9	10	11	11	11	11	11	11	11	13	12	11	11	10	
144	10	9	8	8	7	6	5	6	6	8	8	9	10	11	11	11	12	11	11	12	12	11	11	11	10	
145	10	9	8	8	8	6	6	6	7	8	8	9	10	11	11	11	12	12	11	13	12	11	11	10	10	
146	10	9	8	8	9	6	6	6	8	8	8	8	8	10	11	11	11	11	12	13	13	11	11	11	10	10
147	10	9	8	8	9	6	6	6	9	8	8	8	8	10	11	11	11	11	12	12	13	11	11	11	10	10
148	10	9	8	8	8	8	6	7	9	8	8	8	8	10	11	11	10	11	12	12	12	11	11	11	10	10
149	10	9	8	8	8	10	8	9	8	8	8	8	8	10	11	11	11	11	10	12	11	11	11	10	10	10
150	10	9	8	8	8	10	10	9	8	8	8	8	8	10	11	10	11	10	11	11	11	10	10	10	10	10
151	10	9	8	8	8	9	10	9	8	8	8	8	8	10	11	10	10	10	10	10	10	10	10	10	10	10
152	10	9	8	8	8	8	9	8	8	8	8	8	8	10	10	10	10	10	10	10	10	10	10	10	10	10
153	10	9	8	8	8	8	8	8	8	7	8	8	10	10	10	10	10	10	10	10	10	10	10	10	10	10
154	10	9	8	8	8	8	8	8	8	7	8	8	10	10	10	10	10	10	10	10	10	10	10	10	10	10
155	10	9	8	8	7	8	8	8	8	7	8	9	10	10	10	10	10	10	10	10	10	10	10	10	10	10
156	10	9	8	8	7	8	8	8	8	7	8	9	10	10	10	10	10	10	10	10	10	10	10	10	10	10
157	10	9	8	8	7	8	8	8	7	8	8	9	10	10	10	10	10	10	10	10	10	10	10	10	10	10
158	10	9	8	8	8	7	8	8	7	8	8	9	10	10	10	10	10	10	10	10	10	10	10	10	10	10
159	10	9	9	8	8	8	7	7	7	8	8	9	10	10	10	10	10	10	10	10	10	10	10	10	10	10
160	10	9	9	8	8	8	7	7	8	8	8	9	10	10	10	10	10	10	10	10	10	10	10	10	10	10
161	10	9	9	8	8	8	8	8	8	8	8	9	10	10	10	10	10	10	10	10	10	10	10	10	10	10
162	10	9	9	8	8	8	8	8	8	8	8	9	10	10	10	10	10	10	10	10	10	10	10	10	10	10
163																										

	10	9	9	9	8	8	8	8	8	8	9	9	10	10	10	10	10	10	10	10	10	10	9	10	
164	10	9	9	9	8	8	8	8	8	8	9	9	10	10	10	10	10	10	10	10	10	10	9	10	
165	10	9	9	9	8	8	8	8	8	8	9	9	10	10	10	10	10	10	10	10	10	10	9	10	
166	10	9	9	9	8	8	8	8	8	8	9	9	10	10	10	10	10	10	10	10	10	10	9	10	
167	10	9	9	9	8	8	8	8	8	8	9	9	10	10	10	10	10	10	10	10	10	10	9	10	
168	10	9	9	9	8	8	8	8	8	8	9	9	10	10	10	10	10	10	10	10	10	10	9	10	
169	10	9	9	9	9	9	8	8	8	8	9	9	10	10	10	10	10	10	10	10	10	10	9	10	
170	10	9	9	9	9	9	8	8	8	9	9	9	10	10	10	10	10	10	10	10	10	10	9	10	
171	10	9	9	9	9	9	9	8	8	9	9	9	10	10	10	10	10	10	10	10	10	10	9	10	
172	10	9	9	9	9	9	9	9	9	9	9	9	10	10	10	10	10	10	10	10	10	10	9	9	10
173	10	9	9	9	9	9	9	9	9	9	9	9	10	10	10	10	10	10	10	10	10	10	9	9	10
174	10	9	9	9	9	9	9	9	9	9	9	9	10	10	10	10	10	10	10	10	10	10	9	9	10
175	10	9	9	9	9	9	9	9	9	9	9	9	10	10	10	10	10	10	10	10	10	10	9	9	10
176	10	9	9	10	9	9	9	9	9	9	9	9	10	10	10	10	10	10	10	10	10	10	9	9	10
177	10	10	10	10	9	9	9	9	9	9	9	9	10	10	10	10	10	10	10	10	10	10	9	9	10
178	10	10	10	10	9	9	9	9	9	9	9	9	10	10	10	10	10	10	10	10	10	10	9	9	10
179	10	10	10	10	10	10	9	9	9	9	9	9	10	10	10	10	10	10	10	9	9	9	9	9	10
180	10	10	10	10	10	10	10	10	10	10	10	10	10	10	10	10	10	10	10	10	10	10	10	10	10

**Luminaire Report Summary**

IESNA:LM-63-2002  
[TEST]  
[TESTDATE] 2018-08-27  
[TESTLAB] EVERFINE  
[ISSUEDATE] 2018-08-27 15:27:01  
[MANUFAC] SARIN Energy Inc  
[LUMINAIRE] SES-SSLSK-80-6000  
[\_LAMPPOSITION] 0,0  
[\_TOTALLUMINAIRELUMENS] 11710.2  
[OTHER] EVERFINE GO-2000B\_V1 SYSTEM  
FILE: CANDELA MULTIPLIER: 1  
FILE: VERTICAL ANGLES: 181, HORIZONTAL ANGLES: 25  
FILE: COORDINATE SYSTEM: TYPE C  
FILE: UNIT OF MEASURE: METRIC  
FILE: BALLAST FACTOR: 1

Photometrics Pro 1.3.29 copyright 2003-2019 by jSolutions, Inc.  
Reported data calculated from manufacturer's data file, based on IES recommended methods.