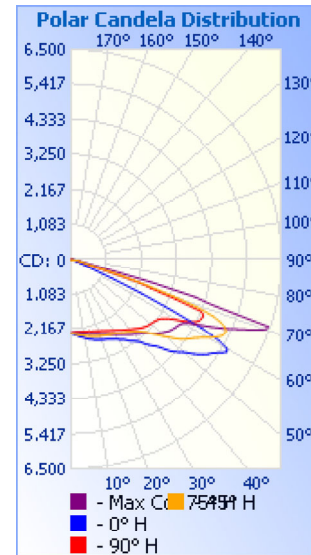


Photometrics Pro

Luminaire Photometric Report

Filename: Street Light STZM 135W
Manufacturer: SARIN Energy Inc.
Luminaire: SES-STZM-5700-135
Lamp Output: 1 lamp, rated Lumens/lamp: 12825
Max Candela: 6,465.3 at Horizontal: 75°, Vertical: 71°
Input Wattage: 135
Luminous Opening: Point
Test Date: 2014.8.13
Photometry : Type C
Nema Type: 7 X 5

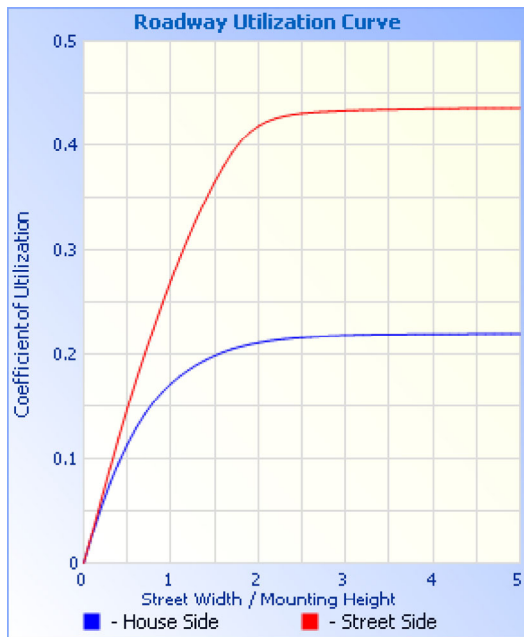
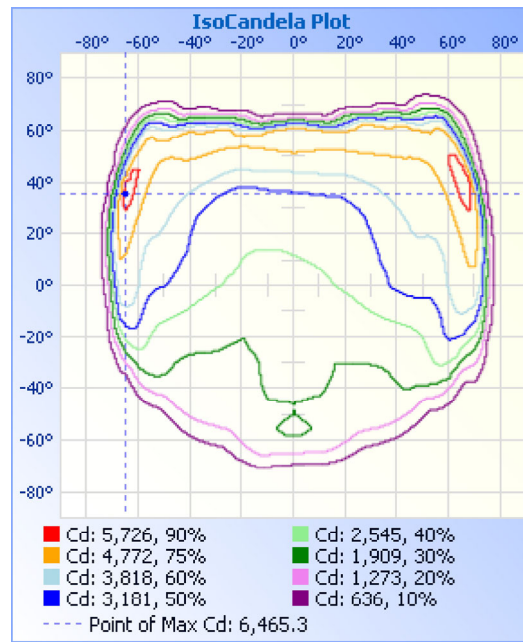
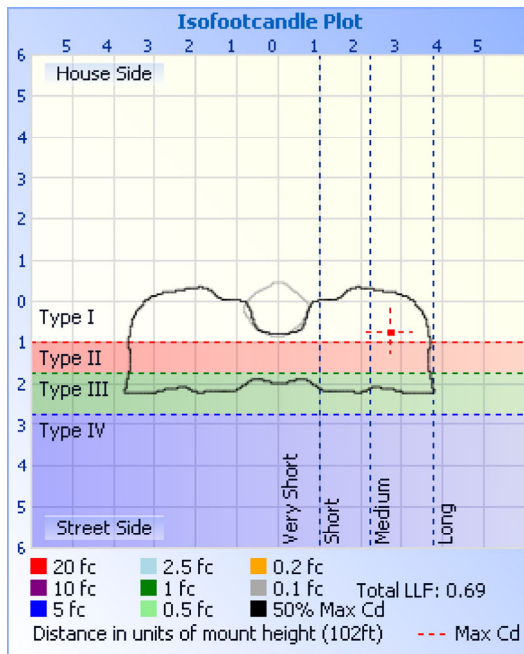


Roadway Summary			
Cutoff Classification:	CUTOFF		
Distribution:	TYPE III, MEDIUM		
Max Cd, 90 Deg Vert:	34.7		
Max Cd, 80 to <90 Deg:	893.8		
	Lumens	% Lamp	
Downward Street Side:	8,195.6	63.9%	
Downward House Side:	4,129.2	32.2%	
Downward Total:	12,324.8	96.1%	
Total Lumens:	12,324.8	96.1%	

Flood Summary				
	Efficiency	Lumens	Horizontal Spread	Vertical Spread
Field (10%):	93.6%	12,007.8	147	96.4
Beam (50%):	45.9%	5,890.9	44.3	64.8
Total:	96.1%	12,320.9		

Zonal Lumen Summary			
Zone	Lumens	% Lamp	% Luminaire
0-30	2,016.9	15.7%	16.4%
0-40	3,632.8	28.3%	29.5%
0-60	8,632.0	67.3%	70%
60-90	3,692.0	28.8%	30%
0-90	12,324.0	96.1%	100%

Lumens Per Zone		
Zone	Lumens	% Total
0-10	220.4	1.8%
10-20	667.5	5.4%
20-30	1,129.0	9.2%
30-40	1,615.9	13.1%
40-50	2,166.1	17.6%
50-60	2,833.1	23.0%
60-70	2,657.8	21.6%
70-80	950.0	7.7%
80-90	84.2	0.7%



Illuminance at a Distance

	Center Beam fc	Beam Width	
16.7ft	8.27 fc	21.2 ft	13.6 ft
33.3ft	2.08 fc	42.3 ft	27.1 ft
50.0ft	0.92 fc	63.5 ft	40.7 ft
66.7ft	0.52 fc	84.7 ft	54.3 ft
83.3ft	0.33 fc	105.7 ft	67.8 ft
100.0ft	0.23 fc	126.9 ft	81.4 ft

■ Vert. Spread: 64.8°
 ■ Horiz. Spread: 44.3°

Coefficients Of Utilization - Zonal Cavity Method

Effective Floor Cavity Reflectance: 20%

RCC %:	80				70				50			30			10			0
RW %:	70	50	30	0	70	50	30	0	50	30	20	50	30	20	50	30	20	0
RCR: 0	1.14	1.14	1.14	1.14	1.12	1.12	1.12	.96	1.07	1.07	1.07	1.02	1.02	1.02	.98	.98	.98	.96
1	1.04	.98	.94	.90	1.01	.96	.92	.79	.92	.89	.86	.88	.86	.83	.85	.83	.81	.78
2	.93	.84	.76	.70	.90	.82	.75	.64	.78	.73	.68	.75	.70	.66	.72	.68	.64	.62
3	.83	.71	.63	.56	.80	.70	.62	.52	.67	.60	.54	.64	.58	.53	.62	.56	.52	.50
4	.75	.62	.52	.45	.72	.60	.51	.42	.58	.50	.44	.55	.49	.43	.53	.47	.43	.40
5	.68	.54	.44	.37	.66	.53	.44	.35	.51	.43	.36	.49	.42	.36	.47	.41	.36	.33
6	.62	.48	.38	.31	.60	.47	.38	.30	.45	.37	.31	.43	.36	.30	.41	.35	.30	.28
7	.57	.42	.33	.27	.55	.42	.33	.26	.40	.32	.26	.39	.31	.26	.37	.31	.26	.24
8	.52	.38	.29	.23	.51	.38	.29	.22	.36	.28	.23	.35	.28	.23	.34	.27	.22	.20
9	.49	.35	.26	.20	.47	.34	.26	.20	.33	.25	.20	.32	.25	.20	.31	.24	.20	.18

10 | .45 .32 .23 .18 | .44 .31 .23.18 | .30 .23 .18 | .29 .22 .18 |.28.22.18|.16

52	4809	4549	4168	4004	3697	3700	3207	2296	1762	1541	1492	1815	1946	1812	1641	1704	2060	2578	3357	3810	4005	4161	4311	4588	4809
53	4945	4646	4298	4132	3810	3752	3225	2292	1758	1527	1487	1823	1964	1827	1644	1695	2056	2596	3371	3811	4046	4242	4435	4682	4945
54	5065	4744	4404	4251	3917	3791	3249	2295	1755	1517	1481	1837	1984	1841	1638	1691	2044	2621	3400	3817	4083	4300	4575	4778	5065
55	5176	4842	4492	4348	4003	3825	3286	2305	1751	1509	1468	1847	1993	1851	1621	1684	2028	2658	3440	3837	4103	4354	4684	4868	5176
56	5259	4920	4577	4434	4072	3857	3331	2323	1743	1498	1444	1855	1983	1850	1576	1670	2007	2702	3496	3855	4128	4406	4782	4963	5259
57	5371	4995	4694	4525	4158	3884	3412	2354	1723	1478	1405	1854	1952	1839	1532	1645	1960	2755	3567	3882	4156	4469	4936	5059	5371
58	5514	5070	4845	4631	4261	3911	3500	2394	1678	1449	1348	1844	1915	1810	1472	1601	1905	2771	3653	3907	4184	4559	5095	5146	5514
59	5624	5102	4990	4744	4315	3949	3621	2438	1611	1406	1284	1821	1868	1766	1381	1541	1820	2900	3771	3938	4220	4686	5234	5194	5624
60	5575	4902	5102	4881	4333	4003	3777	2468	1510	1342	1204	1779	1799	1711	1258	1461	1679	2936	3891	3987	4247	4808	5358	5121	5575
61	5230	4237	5202	5020	4342	4110	3993	2477	1357	1264	1102	1728	1724	1636	1154	1353	1512	2951	4022	4085	4278	4952	5442	4702	5230
62	4601	2722	5272	5151	4335	4324	4154	2448	1199	1164	1005	1664	1639	1546	1034	1235	1339	2923	4163	4258	4316	5076	5522	4041	4601
63	3489	2235	5289	5254	4362	4547	4311	2373	1020	1036	905	1579	1515	1440	900	1102	1128	2834	4299	4439	4387	5182	5583	2657	3489
64	2432	1476	5058	5299	4460	4818	4396	2244	830	913	796	1494	1367	1316	803	954	945	2673	4406	4600	4518	5268	5510	2035	2432
65	1390	930	4412	5293	4627	5084	4438	2036	666	778	703	1400	1192	1200	682	820	777	2461	4490	4809	4694	5325	5268	1251	1390
66	837	584	3657	5211	4796	5340	4454	1779	504	657	604	1282	995	1065	567	690	599	2407	4542	4975	4883	5328	4826	715	837
67	558	387	2878	5033	4932	5589	4445	1439	364	536	496	1161	826	937	461	558	451	1850	4583	5157	5031	5298	4325	462	558
68	421	317	2412	4748	5059	5863	4346	1066	301	433	428	1010	714	793	390	444	354	1461	4604	5434	5167	5212	3507	350	421
69	328	279	1350	4257	5163	6167	3494	713	262	356	378	840	634	650	344	362	293	1109	4586	5737	5306	5042	2403	305	328
70	280	244	737	3367	5155	6418	2642	466	237	312	341	712	562	532	313	308	261	814	4500	6067	5375	4736	1152	272	280
71	240	213	445	2477	5052	6465	2246	334	215	278	307	622	431	459	284	276	239	565	4303	6322	5378	4223	659	240	240
72	213	183	369	1616	4961	4591	1150	281	195	248	271	547	270	408	253	252	219	406	3921	6374	5363	2617	505	208	213
73	193	157	327	990	4844	4014	566	245	178	222	228	434	193	352	229	231	202	330	3289	6122	5359	2067	422	180	193
74	164	137	278	651	4546	2581	407	220	162	200	166	290	161	251	191	210	186	288	2524	5365	5228	1192	347	155	164
75	137	121	235	475	3904	1147	337	199	148	179	127	196	139	176	145	191	173	258	1609	3620	4799	710	291	134	137
76	119	106	195	385	2811	693	291	180	132	159	106	157	121	143	117	174	158	233	694	1876	4046	502	250	119	119
77	102	94	165	338	1974	503	256	161	117	141	92	131	105	120	100	156	143	214	452	962	3273	415	216	105	102
78	92	83	143	301	1136	403	217	139	101	117	79	112	90	105	86	140	127	195	372	632	2393	369	190	90	92
79	85	76	122	265	763	340	182	120	86	91	67	95	77	90	75	122	114	178	329	488	1541	338	168	80	85
80	76	70	95	231	517	283	150	103	70	77	57	81	65	78	65	97	100	158	304	407	894	308	136	73	76
81	70	64	81	188	407	241	120	84	51	63	49	69	55	67	56	81	85	137	263	354	652	281	105	68	70
82	65	59	72	141	336	207	84	67	39	53	41	60	44	59	49	68	71	118	222	305	535	252	86	62	65
83	62	55	64	94	281	171	56	56	33	43	34	50	24	50	42	58	53	100	194	263	431	217	77	57	62
84	53	47	55	62	210	133	38	48	26	34	28	43	18	43	35	48	40	83	163	228	362	170	68	52	53
85	47	43	49	46	150	92	28	41	19	22	22	35	13	36	28	39	32	66	132	196	298	109	58	45	47
86	41	40	44	33	98	49	20	25	13	13	15	28	9	30	22	28	25	55	97	165	234	61	51	42	41
87	37	38	40	26	57	25	9	14	4	9	3	19	4	21	14	17	20	47	62	134	171	43	46	40	37
88	33	34	32	19	29	8	1	6	1	3	0	5	0	12	4	11	13	36	38	92	115	30	42	37	33
89	28	29	23	10	16	1	1	1	1	1	0	1	0	3	1	6	6	18	26	48	74	23	33	33	28
90	18	25	12	3	2	1	1	1	1	1	0	0	1	0	1	1	2	10	14	29	35	20	24	30	18

Luminaire Report Summary

IESNA:LM-63-2002
[TEST]
[TESTDATE] 2014.8.13
[TESTLAB]
[ISSUEDATE] 2014-08-14 08:56:47
[MANUFAC] SARIN Energy Inc.
[LUMINAIRE] SES-STZM-5700-135
[_TOTALLUMINAIRELUMENS] 12324
[_LAMPPOSITION] 0,0
[OTHER] EVERFINE GO-2000B SYSTEM
FILE: CANDELA MULTIPLIER: 1
FILE: VERTICAL ANGLES: 91, HORIZONTAL ANGLES: 25
FILE: COORDINATE SYSTEM: TYPE C
FILE: UNIT OF MEASURE: METRIC
FILE: BALLAST FACTOR: 1

Photometrics Pro 1.3.29 copyright 2003-2019 by jSolutions, Inc.
Reported data calculated from manufacturer's data file, based on IES recommended methods.