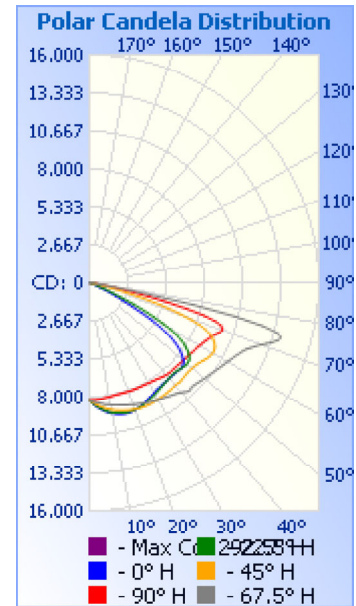


# Photometrics Pro

## Luminaire Photometric Report

**Filename:** Shoebox SBN 240W - 120V  
**Manufacturer:** SARIN Energy Inc.  
**Luminaire:** SES-SBN-3000-240 120V  
**Lamp Output:** Total luminaire Lumens: 31294.7  
**Max Candela:** 15,127.1 at Horizontal: 292.5°, Vertical: 71°  
**Input Wattage:** 244.1  
**Luminous Opening:** Point  
**Test Date:** 2016-09-11  
**Test Lab:** Standard-Tech Co. Ltd  
**Photometry :** Type C  
**Nema Type:** 7 X 7



### Roadway Summary

Cutoff Classification:	CUTOFF
Distribution:	TYPE III, MEDIUM
Max Cd, 90 Deg Vert:	11.3
Max Cd, 80 to <90 Deg:	1,807.0
	Lumens % Lamp
Downward Street Side:	21,225.4 67.8%
Downward House Side:	10,000.9 32%
Downward Total:	31,226.3 99.8%
Upward Street Side:	25.1 0.1%
Upward House Side:	45.4 0.1%
Upward Total:	70.5 0.2%
Total Lumens:	31,296.8 100%

### Flood Summary

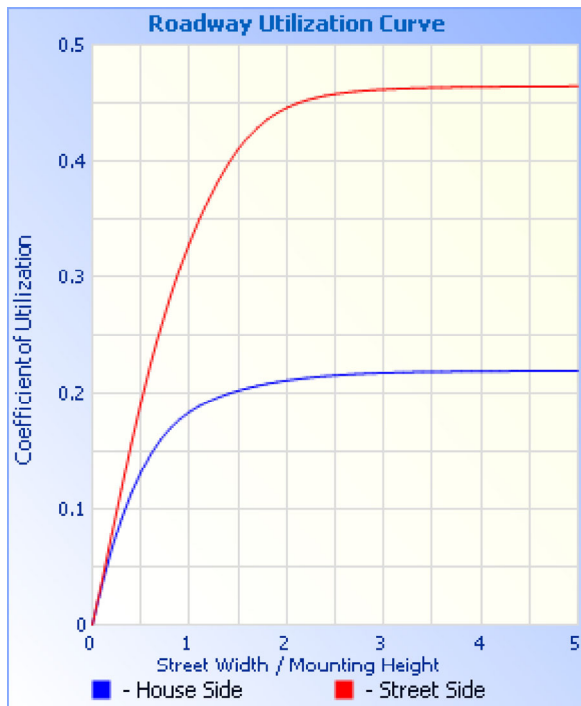
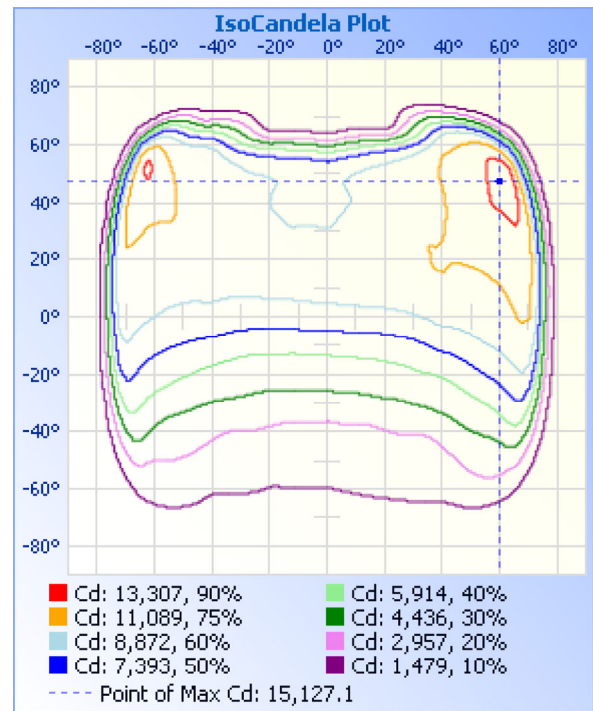
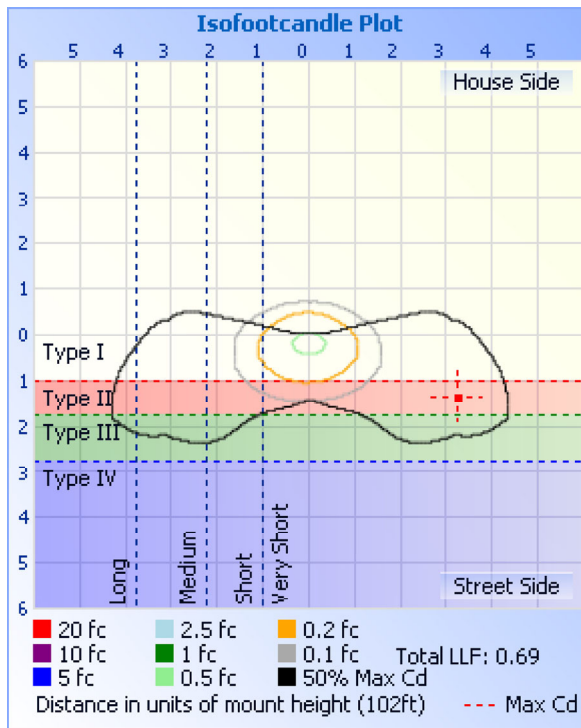
	Efficiency	Lumens	Horizontal Spread	Vertical Spread
Field (10%):	97.4%	30,486.9	149.1	132
Beam (50%):	69.9%	21,866.2	139.9	84.9
Total:	100%	31,284.4		

### Zonal Lumen Summary

Zone	Lumens	% Luminaire
0-30	6,468.4	20.7%
0-40	10,980.6	35.1%
0-60	22,266.8	71.2%
60-90	8,957.4	28.6%
70-100	3,415.0	10.9%
90-120	27.8	0.1%
0-90	31,224.2	99.8%
90-180	70.5	0.2%
0-180	31,294.7	100%

### Lumens Per Zone

Zone	Lumens	% Total	Zone	Lumens	% Total
0-10	774.0	2.5%	90-100	6.1	0%
10-20	2,219.7	7.1%	100-110	9.6	0%
20-30	3,474.7	11.1%	110-120	12.1	0%
30-40	4,512.2	14.4%	120-130	12.0	0%
40-50	5,352.8	17.1%	130-140	10.5	0%
50-60	5,933.5	19.0%	140-150	8.3	0%
60-70	5,548.6	17.7%	150-160	6.3	0%
70-80	3,255.3	10.4%	160-170	3.9	0%
80-90	153.6	0.5%	170-180	1.6	0%



**Illuminance at a Distance**

	Center Beam fc	Beam Width	
16.7ft	29.4 fc	30.5 ft	91.5 ft
33.3ft	7.40 fc	60.9 ft	182.5 ft
50.0ft	3.28 fc	91.4 ft	274.1 ft
66.7ft	1.85 fc	122.0 ft	365.6 ft
83.3ft	1.18 fc	152.3 ft	456.6 ft
100.0ft	0.82 fc	182.8 ft	548.1 ft

■ Vert. Spread: 84.9°  
 ■ Horiz. Spread: 139.9°

**Coefficients Of Utilization - Zonal Cavity Method**

Effective Floor Cavity Reflectance: 20%

RCC %:	80				70				50			30			10			0
RW %:	70	50	30	0	70	50	30	0	50	30	20	50	30	20	50	30	20	0
RCR: 0	1.19	1.19	1.19	1.19	1.16	1.16	1.16	1.00	1.11	1.11	1.11	1.06	1.06	1.06	1.02	1.02	1.02	1.00
1	1.08	1.03	.98	.94	1.05	1.00	.96	.83	.96	.93	.89	.92	.89	.87	.88	.86	.84	.82
2	.97	.88	.80	.74	.94	.86	.79	.67	.82	.76	.71	.79	.74	.70	.76	.71	.68	.66
3	.87	.76	.67	.59	.85	.74	.66	.55	.71	.64	.58	.68	.62	.57	.65	.60	.56	.53

4	.79	.66	.56	.49	.77	.65	.56	.46	.62	.54	.48	.59	.53	.47	.57	.51	.46	.44
5	.72	.58	.48	.41	.70	.57	.48	.39	.55	.47	.40	.53	.46	.40	.51	.44	.39	.37
6	.66	.52	.42	.35	.64	.51	.42	.34	.49	.41	.35	.47	.40	.34	.45	.39	.34	.32
7	.61	.47	.37	.31	.59	.46	.37	.30	.44	.36	.30	.43	.35	.30	.41	.35	.30	.28
8	.57	.42	.33	.27	.55	.42	.33	.26	.40	.32	.27	.39	.32	.26	.38	.31	.26	.24
9	.53	.39	.30	.24	.51	.38	.30	.23	.37	.29	.24	.36	.29	.24	.35	.28	.23	.22
10	.49	.35	.27	.22	.48	.35	.27	.21	.34	.26	.21	.33	.26	.21	.32	.26	.21	.19

Candela Table - Type C																	
	0	22.5	45	67.5	90	112.5	135	157.5	180	202.5	225	247.5	270	292.5	315	337.5	360
0	8209	8209	8209	8209	8209	8209	8209	8209	8209	8209	8209	8209	8209	8209	8209	8209	8209
1	8363	8349	8319	8263	8202	8147	8092	8056	8051	8063	8101	8161	8216	8275	8321	8358	8363
2	8503	8480	8420	8315	8198	8084	7971	7902	7887	7911	7988	8106	8223	8340	8427	8495	8503
3	8638	8605	8513	8363	8192	8017	7846	7738	7711	7751	7868	8049	8229	8404	8529	8617	8638
4	8764	8720	8600	8408	8182	7943	7716	7567	7527	7590	7742	7989	8235	8463	8630	8737	8764
5	8874	8827	8679	8453	8167	7866	7578	7393	7343	7425	7621	7929	8247	8522	8726	8845	8874
6	8977	8926	8758	8503	8152	7787	7438	7219	7156	7256	7496	7867	8259	8583	8820	8942	8977
7	9068	9012	8832	8547	8135	7706	7295	7047	6966	7083	7366	7802	8269	8646	8908	9038	9068
8	9147	9090	8901	8587	8121	7625	7154	6874	6778	6912	7235	7733	8280	8708	8994	9135	9147
9	9218	9165	8960	8622	8104	7545	7011	6700	6592	6742	7102	7662	8290	8771	9078	9220	9218
10	9281	9226	9019	8660	8087	7457	6868	6526	6410	6575	6970	7596	8297	8833	9155	9296	9281
11	9335	9279	9075	8699	8071	7373	6729	6355	6234	6414	6841	7532	8305	8894	9227	9354	9335
12	9384	9318	9126	8741	8057	7292	6590	6186	6067	6256	6715	7467	8312	8956	9297	9404	9384
13	9428	9359	9175	8781	8048	7206	6453	6028	5901	6103	6595	7398	8326	9023	9359	9453	9428
14	9462	9395	9217	8815	8043	7120	6316	5878	5743	5954	6476	7326	8341	9089	9421	9497	9462
15	9484	9421	9257	8847	8042	7037	6183	5736	5595	5817	6363	7260	8355	9149	9486	9537	9484
16	9500	9439	9292	8881	8041	6955	6058	5592	5457	5689	6245	7198	8371	9212	9539	9567	9500
17	9501	9446	9323	8921	8043	6879	5936	5460	5332	5566	6130	7132	8393	9275	9588	9595	9501
18	9489	9441	9354	8959	8049	6802	5817	5336	5214	5448	6021	7061	8411	9336	9635	9615	9489
19	9468	9435	9384	9007	8051	6724	5701	5216	5103	5336	5917	6998	8431	9388	9675	9621	9468
20	9436	9427	9406	9054	8058	6653	5590	5105	4995	5227	5819	6937	8452	9445	9718	9615	9436
21	9399	9412	9423	9090	8066	6580	5487	4999	4890	5126	5723	6875	8477	9505	9763	9603	9399
22	9354	9386	9444	9124	8072	6507	5395	4904	4785	5028	5634	6818	8500	9571	9805	9589	9354
23	9304	9353	9460	9168	8074	6433	5303	4806	4682	4927	5542	6761	8522	9645	9851	9573	9304
24	9249	9317	9462	9210	8077	6359	5218	4705	4577	4829	5461	6702	8544	9717	9886	9547	9249
25	9188	9277	9469	9245	8081	6288	5133	4609	4470	4734	5373	6646	8569	9788	9909	9521	9188
26	9126	9228	9473	9285	8084	6220	5049	4509	4365	4641	5290	6595	8598	9864	9930	9490	9126
27	9071	9178	9471	9327	8085	6154	4971	4406	4251	4540	5216	6547	8631	9936	9954	9452	9071
28	9022	9128	9458	9367	8087	6090	4889	4302	4129	4433	5145	6494	8661	10012	9974	9416	9022
29	8983	9085	9446	9408	8101	6032	4813	4192	4011	4329	5076	6448	8695	10081	9991	9385	8983
30	8938	9044	9446	9450	8116	5972	4740	4080	3881	4221	5011	6405	8739	10151	10010	9363	8938
31	8887	9001	9435	9507	8132	5913	4664	3961	3738	4110	4944	6366	8784	10238	10032	9333	8887
32	8834	8945	9429	9548	8150	5861	4594	3843	3589	3995	4881	6340	8837	10319	10062	9297	8834
33	8791	8901	9420	9582	8173	5813	4528	3720	3433	3867	4823	6320	8889	10396	10091	9266	8791
34	8763	8860	9405	9627	8184	5776	4451	3587	3268	3737	4745	6323	8946	10469	10122	9225	8763
35	8743	8813	9397	9674	8209	5746	4373	3451	3104	3597	4664	6313	9010	10538	10136	9199	8743
36	8726	8778	9389	9718	8246	5707	4293	3304	2940	3453	4580	6286	9097	10617	10161	9180	8726
37	8710	8749	9384	9774	8282	5668	4208	3158	2791	3300	4498	6265	9192	10711	10193	9145	8710
38	8693	8721	9372	9830	8322	5617	4125	3011	2649	3147	4412	6219	9300	10811	10233	9111	8693
39	8682	8698	9354	9899	8349	5567	4036	2862	2518	2994	4325	6155	9394	10941	10271	9083	8682
40	8670	8671	9335	9996	8373	5521	3949	2724	2401	2850	4231	6108	9453	11120	10314	9068	8670
41	8669	8651	9341	10110	8396	5474	3856	2592	2299	2720	4131	6070	9472	11361	10354	9053	8669
42	8676	8638	9361	10218	8404	5431	3754	2474	2204	2603	4020	6037	9437	11563	10411	9043	8676
43	8691	8639	9353	10257	8402	5388	3649	2365	2120	2495	3908	5998	9409	11503	10427	9045	8691
44	8703	8654	9328	10201	8403	5337	3536	2272	2047	2398	3789	5965	9423	11338	10406	9055	8703
45	8713	8680	9311	10199	8415	5291	3419	2189	1983	2314	3659	5938	9467	11315	10375	9081	8713
46	8725	8716	9303	10220	8418	5250	3290	2113	1925	2239	3526	5913	9511	11351	10339	9112	8725

47	8738	8755	9286	10267	8430	5208	3161	2047	1874	2166	3390	5892	9559	11395	10319	9167	8738
48	8722	8804	9285	10319	8450	5167	3033	1989	1827	2097	3250	5871	9608	11457	10312	9220	8722
49	8664	8845	9296	10374	8464	5122	2905	1934	1790	2035	3109	5839	9669	11531	10321	9270	8664
50	8557	8861	9328	10424	8475	5073	2784	1881	1770	1977	2969	5811	9721	11605	10347	9307	8557
51	8391	8848	9351	10483	8510	5022	2663	1829	1767	1925	2844	5774	9793	11677	10376	9333	8391
52	8179	8814	9378	10536	8539	4972	2553	1781	1763	1877	2724	5739	9874	11760	10399	9327	8179
53	7928	8725	9423	10593	8566	4920	2455	1736	1745	1831	2621	5697	9949	11844	10449	9288	7928
54	7630	8577	9493	10651	8586	4868	2360	1692	1706	1793	2525	5659	10021	11939	10516	9185	7630
55	7289	8387	9562	10704	8621	4801	2273	1655	1660	1757	2439	5611	10087	12042	10592	9032	7289
56	6873	8144	9655	10782	8668	4738	2194	1620	1615	1723	2358	5557	10152	12139	10669	8838	6873
57	6379	7856	9737	10856	8698	4669	2125	1584	1567	1693	2286	5486	10220	12239	10764	8607	6379
58	5764	7515	9812	10930	8738	4597	2061	1554	1525	1663	2221	5409	10295	12352	10861	8316	5764
59	5024	7093	9862	11004	8775	4514	2001	1523	1485	1639	2156	5306	10369	12484	10953	7946	5024
60	4219	6553	9902	11079	8831	4426	1940	1494	1449	1618	2099	5208	10445	12591	11041	7501	4219
61	3355	5863	9910	11174	8889	4326	1883	1465	1412	1594	2043	5112	10545	12701	11122	6943	3355
62	2640	5103	9877	11272	8951	4213	1827	1437	1375	1570	1989	4999	10648	12837	11178	6238	2640
63	2044	4261	9810	11355	9028	4091	1774	1407	1333	1543	1936	4879	10760	12966	11203	5392	2044
64	1630	3358	9704	11469	9109	3964	1720	1374	1284	1509	1888	4772	10867	13139	11191	4429	1630
65	1218	2498	9551	11603	9189	3840	1667	1335	1226	1466	1844	4659	11010	13297	11136	3388	1218
66	806	1774	9365	11730	9282	3715	1613	1290	1157	1411	1803	4534	11157	13515	11026	2441	806
67	590	1368	9096	11891	9404	3601	1563	1233	1079	1335	1759	4402	11290	13795	10868	1634	590
68	502	965	8731	12144	9552	3475	1510	1159	986	1241	1713	4258	11384	14110	10672	1156	502
69	458	562	8233	12391	9697	3328	1461	1075	856	1121	1657	4091	11377	14460	10388	678	458
70	423	447	7549	12694	9805	3180	1411	975	632	987	1589	3917	11129	14837	9990	494	423
71	393	398	6700	13071	9821	3033	1352	854	454	831	1499	3735	10548	15127	9433	428	393
72	365	362	5729	13433	9638	2883	1282	730	380	678	1378	3525	9578	15102	8688	386	365
73	336	332	4726	13747	9180	2722	1186	617	339	544	1231	3234	8259	14552	7742	351	336
74	314	305	3690	13882	8333	2560	1076	497	304	406	1052	2942	6707	13364	6588	321	314
75	297	280	2728	13563	7050	2393	947	354	279	283	853	2650	5026	11420	5277	294	297
76	278	258	1897	12480	5502	2211	798	243	256	210	659	2271	3521	8908	3858	270	278
77	256	239	1458	10358	4180	1989	655	181	230	177	487	1851	2270	6094	2491	247	256
78	234	227	1020	7400	2858	1718	472	151	208	154	315	1414	1668	3606	1398	232	234
79	212	215	582	4248	1546	1415	228	134	180	139	191	1025	1087	1858	940	219	212
80	190	198	418	1807	869	1111	155	120	150	125	153	695	506	1329	497	202	190
81	168	174	324	1078	473	817	130	107	129	111	132	467	307	810	354	179	168
82	147	148	261	368	272	585	110	94	113	97	113	317	201	291	278	153	147
83	124	126	215	262	172	392	93	84	101	86	95	203	146	235	228	131	124
84	103	108	174	213	122	160	77	73	87	75	78	103	111	195	186	110	103
85	84	93	138	172	93	79	62	61	66	63	63	73	86	155	149	93	84
86	68	80	107	139	73	59	48	47	47	49	48	57	65	120	114	80	68
87	47	61	81	109	55	45	33	33	28	33	32	43	47	92	85	59	47
88	27	36	56	77	36	30	20	20	17	17	18	27	27	58	52	34	27
89	5	12	23	29	12	9	6	3	3	3	5	11	10	15	13	6	5
90	1	1	5	11	8	8	4	0	0	0	4	11	9	10	6	1	1
91	0	1	3	9	8	9	4	0	0	0	4	12	9	9	5	1	0
92	0	0	3	9	9	10	5	0	0	0	5	13	9	8	4	1	0
93	0	0	3	8	9	11	6	0	0	0	6	14	10	7	4	1	0
94	0	0	3	8	9	12	7	0	0	1	6	15	11	7	3	1	0
95	0	0	2	7	10	14	8	0	0	1	7	16	12	6	3	1	0

96	0	0	2	7	11	15	9	0	0	1	8	17	12	6	3	1	0
97	0	0	2	7	12	16	10	1	0	1	9	18	13	6	3	1	0
98	0	1	2	7	13	17	11	1	0	2	10	19	14	6	3	1	0
99	0	1	2	7	13	18	12	2	1	2	10	19	14	6	2	1	0
100	0	1	2	7	14	18	13	2	1	2	11	19	15	6	2	1	0
101	1	1	2	8	15	19	13	3	1	3	12	19	15	6	2	1	1
102	1	1	3	8	16	20	13	4	2	4	12	19	16	6	2	1	1
103	1	1	3	8	16	20	13	4	2	4	13	19	16	7	2	1	1
104	1	1	3	9	17	20	14	5	3	5	14	19	17	7	2	1	1
105	1	2	3	9	18	20	14	6	3	6	15	20	17	8	3	1	1
106	1	2	3	10	18	20	15	6	4	6	15	20	18	8	3	2	1
107	1	2	4	10	19	20	15	7	4	7	15	21	18	9	3	2	1
108	1	2	4	11	19	20	16	8	5	8	16	21	19	9	3	2	1
109	2	2	4	11	20	21	16	8	5	8	16	23	19	9	3	2	2
110	2	2	4	11	20	21	16	9	6	9	16	24	19	12	3	2	2
111	2	2	4	12	20	22	16	9	6	10	16	25	20	10	3	2	2
112	2	3	5	12	21	23	17	10	7	10	17	25	20	10	4	2	2
113	2	3	5	13	20	24	17	10	7	11	17	25	20	11	4	2	2
114	2	3	5	13	20	25	17	10	8	11	17	25	20	11	4	2	2
115	2	3	6	13	21	25	17	10	9	11	17	25	21	11	5	2	2
116	2	3	6	13	21	25	17	10	9	10	18	24	21	11	5	2	2
117	3	3	6	14	21	25	18	10	10	10	18	24	21	11	5	2	3
118	3	3	7	14	21	25	19	10	10	10	19	24	22	11	5	2	3
119	3	3	7	14	20	25	20	11	10	11	20	24	22	11	5	2	3
120	3	3	7	14	20	25	20	13	10	12	20	23	22	12	6	3	3
121	3	4	7	14	20	24	19	14	11	14	20	23	22	12	6	4	3
122	4	5	7	14	20	24	19	14	13	14	19	22	21	12	6	4	4
123	4	5	7	14	19	23	18	14	14	14	19	21	21	12	6	5	4
124	5	5	7	14	19	22	17	14	14	13	19	21	21	12	6	5	5
125	5	5	7	15	18	21	17	14	14	13	19	21	20	12	6	5	5
126	5	6	7	15	18	21	16	14	14	13	19	21	20	12	6	5	5
127	6	6	8	15	18	21	16	14	14	14	19	20	20	12	6	5	6
128	6	6	8	15	18	20	16	15	14	15	19	20	20	12	6	6	6
129	6	6	8	14	18	19	16	16	14	16	19	19	19	12	6	6	6
130	6	6	8	14	18	18	16	18	15	17	19	19	19	12	6	6	6
131	7	6	8	13	18	18	16	19	15	19	19	19	18	12	6	6	7
132	7	7	8	13	17	17	16	21	16	20	19	19	17	12	6	6	7
133	7	7	8	12	17	17	16	21	17	20	19	18	17	11	6	6	7
134	7	7	8	12	17	16	16	21	17	20	19	18	17	11	6	6	7
135	7	7	8	14	17	16	15	21	18	20	18	18	16	11	6	6	7
136	7	7	8	13	17	16	15	21	18	20	17	18	16	11	6	7	7
137	8	8	8	13	16	17	14	21	17	19	17	18	16	11	6	7	8
138	8	8	8	13	16	17	14	20	17	19	16	19	16	11	6	7	8
139	8	8	8	13	16	17	13	20	16	19	15	19	16	11	6	7	8
140	8	8	8	13	16	17	13	20	16	19	15	20	16	11	6	7	8
141	8	8	7	13	16	17	13	20	15	18	15	20	16	11	6	7	8
142	8	8	7	12	16	17	13	19	15	18	15	20	16	11	6	8	8
143	8	9	7	12	16	16	13	19	15	18	15	19	16	10	6	8	8
144	8	9	7	12	16	16	13	19	15	18	16	19	15	10	6	8	8

145	7	9	7	12	16	16	13	19	15	17	16	19	15	10	7	8	7
146	8	9	8	12	16	16	13	19	15	17	17	19	15	10	7	9	8
147	9	9	8	12	16	16	14	19	16	17	18	18	15	10	8	9	9
148	9	10	9	12	16	16	14	19	16	17	19	18	15	10	8	9	9
149	9	10	9	12	15	16	15	19	16	17	20	18	14	10	9	9	9
150	10	10	10	12	15	16	15	18	16	16	20	17	14	10	9	10	10
151	10	11	10	12	15	15	16	18	16	16	20	17	14	10	10	10	10
152	10	11	11	12	15	15	16	18	16	16	20	17	14	10	10	10	10
153	10	11	11	12	14	15	16	18	16	16	20	17	14	10	11	10	10
154	11	11	11	12	14	15	16	17	16	15	20	17	13	10	11	11	11
155	11	11	11	12	13	15	15	17	15	15	20	17	13	10	11	11	11
156	11	11	11	13	13	15	15	16	15	15	19	17	12	10	11	11	11
157	11	11	12	13	13	15	15	16	15	15	19	17	12	10	11	11	11
158	11	12	12	13	13	15	14	16	15	15	18	17	12	10	12	11	11
159	11	12	12	13	13	15	14	16	15	14	18	17	12	10	12	11	11
160	12	12	12	13	14	14	14	16	15	14	17	17	12	11	12	12	12
161	12	12	12	12	14	14	13	16	15	14	17	17	13	11	12	12	12
162	12	12	12	12	14	13	13	15	15	14	16	17	13	11	13	12	12
163	12	12	12	12	14	13	13	15	15	14	16	18	13	11	13	12	12
164	12	12	12	12	14	13	13	15	15	14	15	18	13	11	13	12	12
165	12	13	13	12	14	13	13	15	15	14	15	18	13	11	13	12	12
166	12	13	13	12	14	14	13	15	15	14	15	19	13	11	13	12	12
167	12	13	14	12	15	14	13	16	16	15	16	19	13	12	14	12	12
168	12	13	15	13	15	15	14	17	18	17	18	20	14	12	15	12	12
169	12	15	16	14	15	15	15	18	17	18	19	21	14	13	15	14	12
170	13	15	16	14	16	16	15	19	20	19	20	21	15	13	16	15	13
171	14	16	16	14	17	17	16	19	20	20	20	21	15	14	16	15	14
172	16	16	16	14	17	17	16	19	20	20	20	21	15	14	16	15	16
173	16	16	17	15	17	17	17	19	20	19	20	21	15	15	16	15	16
174	16	16	17	15	17	17	17	18	19	19	19	21	16	15	17	16	16
175	17	16	17	15	17	17	17	18	19	19	19	20	16	15	17	16	17
176	17	16	18	15	16	16	16	18	18	18	18	20	16	16	17	16	17
177	17	16	18	15	16	16	16	17	18	18	17	20	16	16	17	16	17
178	17	16	18	15	15	16	16	17	17	18	17	19	16	16	17	16	17
179	17	16	18	15	15	15	16	16	16	17	16	18	15	16	17	16	17
180	17	17	17	17	17	17	17	17	17	17	17	17	17	17	17	17	17

**Luminaire Report Summary**

IESNA:LM-63-2002  
[TEST]  
[TESTDATE] 2016-09-11  
[TESTLAB] Standard-Tech Co. Ltd  
[ISSUEDATE] 2016-09-11 20:56:35  
[MANUFAC] SARIN Energy Inc.  
[LUMINAIRE] SES-SBN-3000-240 120V  
[\_LAMPPOSITION] 0,0  
[\_TOTALLUMINAIRELUMENS] 31294.7  
[OTHER] EVERFINE GO-R5000\_V2 SYSTEMGamma(deg) Fz(lm) Ft(lm) %Lum %Lamp0- 10 774.02  
774.02 2.47 2.4710- 20 2219.75 2993.77 9.57 9.5720- 30 3474.63 6468.40 20.67  
20.6730- 40 4512.83 10981.23 35.09 35.0940- 50 5353.65 16334.88 52.20 52.2050- 60  
5934.45 22269.33 71.16 71.1660- 70 5548.22 27817.55 88.89 88.8970- 80 3253.63  
31071.19 99.28 99.2880- 90 153.49 31224.68 99.77 99.7790-100 6.14 31230.82 99.79  
99.79100-110 9.55 31240.37 99.82 99.82110-120 12.10 31252.46 99.86 99.86120-130  
12.02 31264.48 99.90 99.90130-140 10.51 31274.99 99.94 99.94140-150 8.29 31283.29  
99.96 99.96150-160 6.30 31289.58 99.98 99.98160-170 3.95 31293.53 99.99 99.99170-  
180 1.61 31295.14 100.00 100.00

FILE: CREATED USING ABSOLUTE PHOTOMETRY  
FILE: CANDELA MULTIPLIER: 1  
FILE: VERTICAL ANGLES: 181, HORIZONTAL ANGLES: 17  
FILE: COORDINATE SYSTEM: TYPE C  
FILE: UNIT OF MEASURE: METRIC  
FILE: BALLAST FACTOR: 1

Photometrics Pro 1.3.29 copyright 2003-2019 by jSolutions, Inc.  
Reported data calculated from manufacturer's data file, based on IES recommended methods.