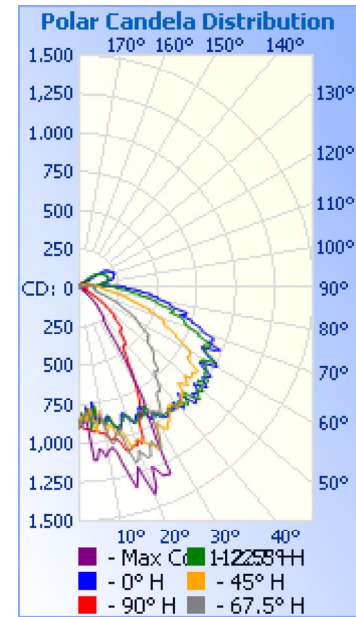


Photometrics Pro

Luminaire Photometric Report

Filename: Wall Pack WP 26W - 277V
Manufacturer: SARIN Energy Inc.
Luminaire: SES-WP-3000-26
Lamp Output: Total luminaire Lumens: 2759.3
Max Candela: 1,415.8 at Horizontal: 112.5°, Vertical: 20°
Input Wattage: 24.7
Luminous Opening: Point
Test Date: 2016-11-08
Test Lab: Standard-Tech Co. Ltd
Photometry : Type C
Nema Type: 6 X 6

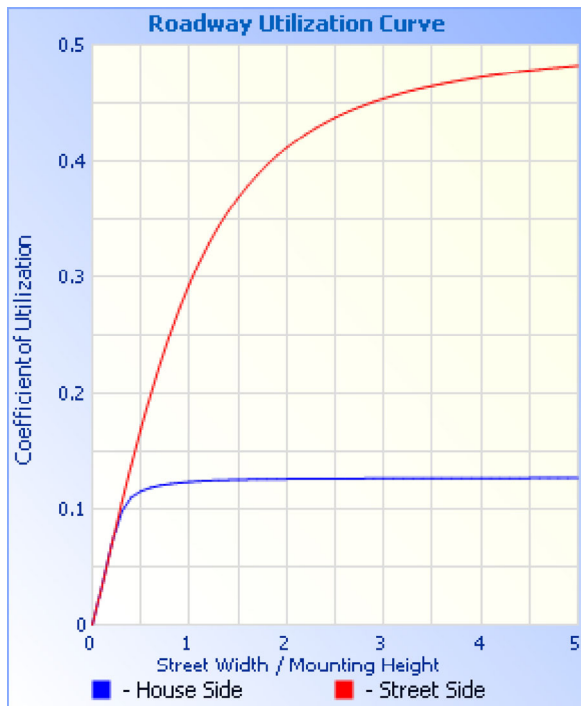
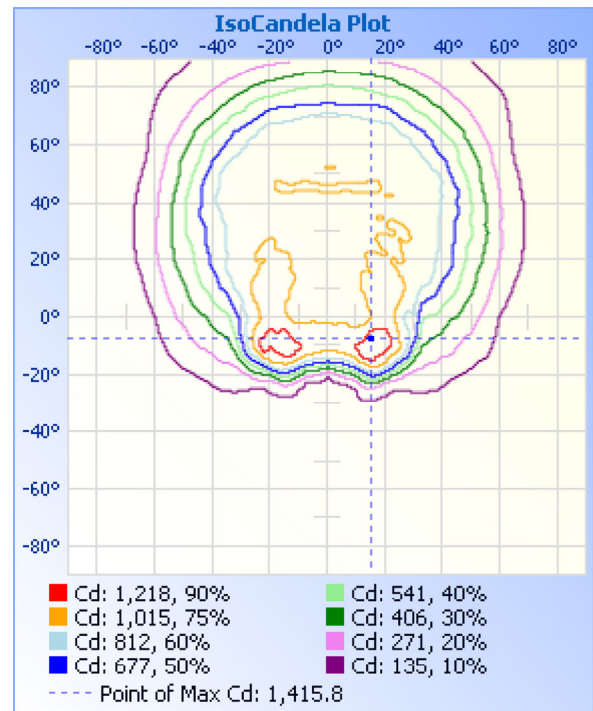
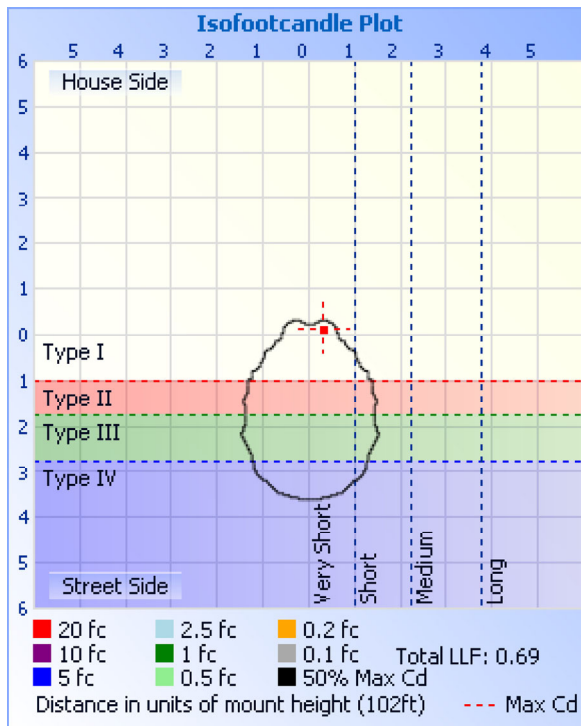


Roadway Summary		
Cutoff Classification:	NONCUTOFF	
Distribution:	TYPE IV, VERY SHORT	
Max Cd, 90 Deg Vert:	293.0	
Max Cd, 80 to <90 Deg:	587.7	
	Lumens	% Lamp
Downward Street Side:	1,992.1	72.2%
Downward House Side:	496.5	18%
Downward Total:	2,488.6	90.2%
Upward Street Side:	237.4	8.6%
Upward House Side:	33.4	1.2%
Upward Total:	270.9	9.8%
Total Lumens:	2,759.5	100%

Flood Summary				
	Efficiency	Lumens	Horizontal Spread	Vertical Spread
Field (10%):	90.9%	2,509.0	115.8	124.6
Beam (50%):	65.2%	1,797.8	60.4	94.4
Total:	100%	2,759.8		

Zonal Lumen Summary		
Zone	Lumens	% Luminaire
0-30	754.5	27.3%
0-40	1,110.2	40.2%
0-60	1,836.7	66.6%
60-90	651.7	23.6%
70-100	416.5	15.1%
90-120	195.7	7.1%
0-90	2,488.4	90.2%
90-180	270.9	9.8%
0-180	2,759.3	100%

Lumens Per Zone					
Zone	Lumens	% Total	Zone	Lumens	% Total
0-10	91.0	3.3%	90-100	73.8	2.7%
10-20	283.3	10.3%	100-110	66.7	2.4%
20-30	380.2	13.8%	110-120	55.2	2%
30-40	355.7	12.9%	120-130	38.9	1.4%
40-50	367.4	13.3%	130-140	21.7	0.8%
50-60	359.1	13.0%	140-150	8.7	0.3%
60-70	309.0	11.2%	150-160	4.5	0.2%
70-80	214.4	7.8%	160-170	1.2	0%
80-90	128.3	4.7%	170-180	0.2	0%



Illuminance at a Distance

	Center Beam fc	Beam Width	
16.7ft	3.23 fc	36.1 ft	19.4 ft
33.3ft	0.81 fc	71.9 ft	38.7 ft
50.0ft	0.36 fc	108.0 ft	58.2 ft
66.7ft	0.20 fc	144.0 ft	77.6 ft
83.3ft	0.13 fc	179.9 ft	96.9 ft
100.0ft	0.09 fc	216.0 ft	116.3 ft

■ Vert. Spread: 94.4°
■ Horiz. Spread: 60.4°

Coefficients Of Utilization - Zonal Cavity Method

Effective Floor Cavity Reflectance: 20%

RCC %:	80				70				50			30			10			0
RW %:	70	50	30	0	70	50	30	0	50	30	20	50	30	20	50	30	20	0
RCR: 0	1.17	1.17	1.17	1.17	1.13	1.13	1.13	.90	1.06	1.06	1.06	.99	.99	.99	.93	.93	.93	.90
1	1.05	1.00	.95	.91	1.02	.97	.93	.74	.91	.87	.84	.85	.82	.80	.80	.78	.76	.73
2	.96	.87	.80	.74	.92	.84	.78	.62	.79	.74	.69	.74	.70	.66	.70	.66	.63	.60
3	.87	.76	.68	.61	.84	.74	.66	.52	.70	.63	.58	.66	.60	.56	.62	.57	.53	.51

4	.80	.68	.59	.52	.77	.66	.58	.45	.62	.55	.49	.59	.53	.48	.55	.50	.46	.44
5	.74	.61	.52	.45	.71	.59	.51	.40	.56	.49	.43	.53	.47	.42	.50	.45	.40	.38
6	.68	.55	.46	.40	.66	.53	.45	.35	.51	.43	.38	.48	.42	.37	.46	.40	.36	.34
7	.63	.50	.41	.35	.61	.49	.41	.32	.46	.39	.34	.44	.38	.33	.42	.36	.32	.30
8	.59	.46	.37	.32	.57	.45	.37	.29	.42	.35	.30	.41	.34	.30	.39	.33	.29	.27
9	.55	.42	.34	.29	.53	.41	.33	.26	.39	.32	.28	.38	.31	.27	.36	.30	.26	.24
10	.52	.39	.31	.26	.50	.38	.31	.24	.36	.30	.25	.35	.29	.25	.33	.28	.24	.22

Candela Table - Type C																	
	0	22.5	45	67.5	90	112.5	135	157.5	180	202.5	225	247.5	270	292.5	315	337.5	360
0	902	902	902	902	902	902	902	902	902	902	902	902	902	902	902	902	902
1	813	813	833	876	895	892	858	858	871	869	859	874	914	854	822	810	813
2	869	857	816	829	908	853	949	1075	1081	1082	997	853	901	799	847	874	869
3	772	815	863	796	910	846	1088	1006	1028	990	1057	906	893	815	849	793	772
4	813	788	813	823	913	970	1023	1033	1038	1051	1005	1019	890	862	769	793	813
5	875	913	782	865	927	1113	1056	1021	1049	1007	1070	1094	889	869	809	898	875
6	744	835	885	882	932	1113	1035	1168	1172	1172	1051	1081	895	842	913	785	744
7	848	769	933	868	929	1044	1058	1101	1079	1116	1042	1031	902	807	870	809	848
8	884	883	842	846	941	1057	1152	1219	1135	1194	1128	1018	905	839	797	908	884
9	831	875	802	837	947	1099	1092	1054	1013	1037	1119	1050	904	928	877	859	831
10	884	863	890	878	956	1072	1081	1083	1097	1070	1047	1046	912	989	975	856	884
11	869	902	946	963	983	1053	1232	1114	1012	1158	1221	1054	923	1007	928	924	869
12	844	867	909	1028	999	1056	1083	1046	970	1039	1040	1083	932	968	858	882	844
13	882	853	908	1016	994	1092	1126	1053	897	1048	1057	1092	955	919	939	883	882
14	908	921	972	971	1007	1184	1318	965	833	926	1318	1113	980	949	998	930	908
15	928	943	981	948	1034	1263	1238	921	714	880	1213	1238	1005	1046	971	945	928
16	956	925	953	1001	1084	1340	1237	773	519	770	1265	1331	1052	1154	984	936	956
17	919	917	993	1112	1096	1285	1264	678	494	686	1365	1366	1072	1174	1047	924	919
18	861	900	1070	1182	1086	1217	1283	609	271	649	1306	1333	1100	1131	1074	888	861
19	853	870	1079	1169	1071	1315	1271	462	202	553	1345	1262	1142	1125	1089	873	853
20	885	872	1052	1118	1080	1416	1151	418	150	410	1203	1317	1119	1158	1069	883	885
21	916	895	1044	1145	1052	1380	1130	317	121	394	1225	1331	1121	1192	1037	931	916
22	939	939	1064	1177	1078	1248	1040	281	104	289	1193	1365	1088	1152	1008	956	939
23	917	940	1081	1173	1044	1281	927	150	93	186	987	1311	1008	1118	1042	952	917
24	898	930	1104	1118	939	1326	953	135	84	156	997	1206	951	1145	1089	915	898
25	914	891	1117	1091	930	1330	767	129	76	138	945	1145	873	1187	1150	906	914
26	863	912	1152	1130	917	1335	603	126	71	135	760	1073	777	1186	1189	933	863
27	864	925	1143	1152	853	1084	499	126	65	136	556	1054	732	1176	1162	895	864
28	942	867	1094	1098	821	953	342	123	60	139	506	965	736	1078	1062	869	942
29	967	891	1042	993	776	867	275	120	54	138	333	828	795	962	987	928	967
30	926	950	1009	934	721	802	219	113	49	134	242	753	806	933	1005	970	926
31	948	964	1055	928	677	666	188	106	44	127	201	643	741	959	1075	955	948
32	975	943	1068	952	635	598	158	98	40	124	169	494	608	987	1081	969	975
33	987	985	1039	963	576	468	130	93	37	117	147	397	513	955	1052	996	987
34	1006	983	1029	925	548	374	108	85	36	110	124	346	508	941	1043	991	1006
35	995	979	1008	885	508	324	98	75	34	97	108	314	522	904	1035	993	995
36	962	985	975	843	476	287	88	69	33	84	95	300	517	891	1018	980	962
37	988	979	952	834	468	262	80	62	31	74	86	286	527	942	1005	973	988
38	994	963	959	841	471	256	72	56	30	66	79	256	496	931	1049	1005	994
39	955	997	981	813	473	245	63	50	30	60	66	246	444	851	1067	1015	955
40	993	996	993	781	452	236	55	47	31	53	56	237	457	830	1047	957	993
41	1027	969	998	738	425	214	52	44	29	50	52	209	454	811	1020	964	1027
42	975	1006	982	723	400	195	50	41	29	44	49	197	415	794	967	1021	975
43	928	1026	949	735	385	181	49	38	27	40	48	190	417	776	973	1012	928
44	985	982	958	728	377	170	48	34	28	36	49	178	425	778	982	956	985
45	1054	951	931	686	377	157	47	34	23	33	51	158	400	760	938	975	1054
46	1045	1014	884	663	375	145	45	31	21	31	47	141	368	756	927	1046	1045

47	991	1055	903	653	366	127	44	28	20	28	47	125	355	707	966	1058	991
48	1015	1026	934	644	337	113	44	27	21	27	45	110	324	680	969	1011	1015
49	1007	1003	910	626	306	97	42	25	18	25	42	91	305	653	944	1025	1007
50	959	1035	883	602	293	83	39	26	15	25	39	74	320	636	944	1024	959
51	999	990	918	565	286	66	37	23	13	24	36	62	301	612	949	959	999
52	1039	966	920	557	285	57	35	20	12	21	33	52	283	585	925	987	1039
53	997	1015	905	555	265	49	32	21	11	20	30	47	253	578	912	1032	997
54	979	1024	926	537	238	43	29	21	9	18	27	44	226	545	907	993	979
55	1003	985	930	542	212	40	27	18	8	18	25	40	215	549	913	984	1003
56	1019	971	858	536	204	37	25	17	7	19	23	36	221	580	898	1008	1019
57	955	980	825	500	190	34	23	14	6	14	20	33	183	510	849	1016	955
58	911	954	831	465	168	31	21	13	5	12	18	30	165	457	863	946	911
59	948	909	830	450	156	29	19	12	4	11	18	30	155	482	888	908	948
60	1020	931	820	436	135	27	18	12	3	11	17	29	123	482	829	952	1020
61	1005	993	781	416	114	26	16	9	3	9	16	28	116	419	758	1018	1005
62	937	968	742	406	105	24	15	7	2	7	14	26	101	409	738	992	937
63	897	912	696	377	89	23	13	6	2	6	13	24	85	412	734	928	897
64	874	895	690	354	77	22	12	5	1	5	12	23	77	378	721	892	874
65	955	882	654	321	69	20	10	5	1	5	10	22	72	329	652	926	955
66	987	924	616	297	65	17	9	4	1	6	8	19	67	325	622	960	987
67	898	886	583	281	60	16	8	3	1	6	7	17	62	304	613	867	898
68	924	823	591	266	56	15	7	3	1	5	7	16	58	284	619	836	924
69	921	825	579	259	52	14	7	3	1	5	7	15	55	272	600	845	921
70	867	763	538	226	49	13	7	3	1	5	7	15	53	244	558	789	867
71	834	720	501	200	47	13	7	3	1	4	7	15	52	218	517	745	834
72	812	711	471	187	46	13	7	2	1	4	7	14	53	202	477	720	812
73	760	702	476	175	44	12	8	2	1	3	7	13	52	190	489	698	760
74	744	668	420	149	43	12	8	2	1	2	8	13	49	165	447	679	744
75	673	605	388	136	42	11	8	2	1	2	8	12	47	150	403	620	673
76	704	624	361	125	40	11	9	2	1	2	8	12	46	139	390	666	704
77	708	600	331	116	39	11	10	2	1	2	9	12	44	130	351	603	708
78	624	538	314	112	37	11	11	2	1	2	9	12	41	125	321	549	624
79	596	510	295	109	35	11	11	2	1	2	10	12	39	121	312	517	596
80	588	496	274	106	34	11	12	2	1	2	11	12	37	117	286	510	588
81	547	459	254	103	33	11	12	2	1	2	11	12	38	114	259	476	547
82	509	439	233	101	34	11	12	2	1	2	11	12	39	112	240	444	509
83	504	391	214	100	35	11	12	2	1	2	12	12	40	112	227	411	504
84	456	387	193	100	35	11	13	2	1	2	11	13	40	112	200	408	456
85	462	343	175	100	35	12	13	2	1	2	12	13	40	111	184	374	462
86	405	323	167	99	35	12	12	2	1	2	12	13	35	108	167	339	405
87	386	303	154	98	36	12	12	2	1	2	12	13	39	106	158	327	386
88	357	272	149	97	37	12	12	2	1	2	12	13	40	105	152	284	357
89	317	250	144	96	38	12	11	2	1	2	12	13	41	103	147	264	317
90	293	238	140	95	39	12	11	2	1	2	11	14	43	103	143	251	293
91	292	230	136	94	41	13	11	2	1	2	11	14	44	101	139	242	292
92	272	218	132	94	43	13	10	2	2	2	11	14	45	100	135	230	272
93	234	192	130	95	45	13	10	2	2	2	11	15	46	99	131	200	234
94	196	163	126	95	47	13	10	2	2	2	10	15	48	97	125	174	196
95	170	130	120	94	50	13	9	2	2	2	9	15	50	96	115	140	170

96	133	107	113	95	52	13	9	2	2	2	9	15	51	96	104	119	133
97	129	106	102	96	53	13	9	2	2	2	9	15	54	95	91	115	129
98	128	111	90	96	55	13	9	2	2	2	9	15	55	91	79	126	128
99	139	122	78	95	56	13	9	2	2	2	9	15	57	86	69	138	139
100	154	134	68	90	57	13	9	2	2	3	9	14	58	81	63	150	154
101	166	146	61	86	58	12	9	2	2	3	8	14	60	76	64	165	166
102	179	161	61	83	58	12	8	2	2	3	8	13	61	72	66	186	179
103	197	177	62	79	58	12	7	2	2	3	7	13	62	68	69	203	197
104	213	186	62	76	58	11	7	2	2	3	7	12	61	64	70	211	213
105	223	192	64	71	58	11	6	2	2	3	6	12	60	57	73	212	223
106	225	193	67	64	58	10	6	3	2	3	6	11	58	49	78	214	225
107	226	194	70	57	57	10	5	3	2	3	5	10	57	41	81	215	226
108	228	194	73	49	55	9	4	3	2	4	5	10	55	34	84	217	228
109	231	195	73	41	54	8	4	3	2	3	4	9	50	28	84	217	231
110	236	197	74	33	52	7	4	2	2	3	4	8	47	22	84	217	236
111	240	196	73	24	49	7	5	2	2	3	4	8	43	17	83	217	240
112	240	195	72	17	46	6	5	3	2	3	5	7	38	17	81	217	240
113	239	194	70	14	41	6	6	2	2	3	5	7	33	18	78	215	239
114	238	190	67	11	35	5	6	2	2	3	5	6	29	20	75	212	238
115	235	186	64	11	29	5	6	2	2	3	6	6	26	22	72	208	235
116	230	183	61	12	24	5	6	2	2	3	6	6	20	23	68	205	230
117	225	180	58	13	18	6	7	2	2	3	6	6	20	25	64	203	225
118	220	176	54	15	18	6	7	2	2	2	6	6	23	26	60	198	220
119	216	174	51	16	20	7	6	2	2	2	6	7	25	26	57	195	216
120	210	172	47	15	23	7	6	2	2	2	6	8	30	23	53	192	210
121	205	170	44	14	26	8	6	2	2	2	6	9	36	18	50	189	205
122	201	166	42	10	31	9	6	2	2	2	6	9	44	13	49	185	201
123	196	159	40	9	35	9	6	2	2	2	5	9	52	9	48	179	196
124	185	155	38	8	40	9	5	2	2	2	5	9	59	9	47	173	185
125	162	150	37	8	43	9	5	2	2	2	5	9	62	9	46	167	162
126	122	145	37	8	45	9	5	2	2	2	5	10	62	9	45	161	122
127	74	140	36	9	46	9	5	2	2	2	5	10	62	9	44	155	74
128	45	135	35	9	47	9	5	2	2	2	5	11	62	9	42	147	45
129	72	130	33	9	48	10	5	2	2	2	5	11	62	10	41	139	72
130	83	124	31	10	48	10	5	2	2	2	5	12	61	10	40	131	83
131	77	117	30	10	49	10	5	2	2	2	5	13	61	11	38	122	77
132	71	109	29	11	50	11	5	2	2	2	5	13	61	11	36	113	71
133	66	102	27	11	51	11	4	2	2	2	5	14	61	11	34	104	66
134	61	94	25	12	51	12	4	2	2	2	4	15	62	12	32	92	61
135	57	86	23	12	52	13	4	2	2	2	4	16	61	13	29	77	57
136	53	78	21	13	53	13	4	2	1	2	4	17	61	13	27	61	53
137	49	71	18	13	53	14	4	2	1	2	4	18	60	13	23	44	49
138	45	61	15	14	53	15	4	2	1	2	4	19	57	14	19	30	45
139	41	49	12	14	52	17	4	2	1	2	4	20	55	14	14	20	41
140	38	36	8	15	51	18	4	2	1	2	3	20	53	14	9	14	38
141	34	24	5	15	49	19	4	1	1	2	3	21	51	15	5	8	34
142	25	16	5	16	47	20	4	1	1	1	3	21	48	15	5	6	25
143	5	12	5	16	45	21	4	1	1	1	3	21	46	16	5	16	5
144	2	10	5	17	43	22	4	1	1	1	3	21	44	16	5	22	2

145	18	9	6	17	41	23	4	1	1	1	3	21	42	17	6	20	18
146	19	7	6	17	39	23	5	1	1	1	3	21	40	17	6	14	19
147	16	4	6	18	37	24	5	1	1	1	3	20	38	17	6	8	16
148	12	1	6	18	35	24	5	1	1	1	3	19	36	18	6	2	12
149	7	0	7	18	33	24	6	1	1	1	3	18	34	18	7	1	7
150	2	1	7	18	32	23	6	1	1	1	3	17	33	19	7	1	2
151	1	1	7	18	30	23	7	1	1	1	3	16	31	19	7	1	1
152	1	1	7	18	29	22	7	1	1	1	3	16	30	19	7	2	1
153	1	1	7	19	27	22	8	1	1	1	3	15	28	19	7	2	1
154	2	2	7	19	26	21	8	1	1	1	3	14	27	19	7	3	2
155	2	2	7	18	25	21	9	1	1	1	2	13	26	19	7	3	2
156	2	3	7	18	24	20	9	1	1	1	1	12	24	19	6	3	2
157	2	3	7	18	23	19	9	1	1	1	1	11	23	18	6	4	2
158	2	4	6	18	22	19	9	1	1	1	1	10	22	18	5	4	2
159	3	4	5	18	20	18	9	1	1	1	1	9	20	17	4	4	3
160	3	4	4	17	19	17	9	1	1	1	1	7	18	16	3	4	3
161	3	4	3	15	17	15	8	2	1	1	1	5	16	13	3	4	3
162	3	4	3	12	15	14	7	2	1	1	1	3	14	10	3	4	3
163	3	4	3	9	12	11	5	2	1	1	1	2	11	6	3	4	3
164	3	4	3	6	9	9	4	2	1	1	1	1	7	4	3	4	3
165	3	4	2	3	6	6	2	2	1	1	1	2	5	2	3	4	3
166	3	3	1	2	4	4	2	2	1	1	1	2	4	1	2	3	3
167	3	3	1	2	4	3	3	2	1	1	1	3	3	1	1	3	3
168	3	2	1	2	4	4	3	2	1	1	1	3	4	2	1	2	3
169	2	1	1	4	5	5	4	2	2	2	2	2	6	3	1	1	2
170	1	1	1	4	6	6	4	2	2	2	1	2	6	4	1	1	1
171	1	1	2	4	6	6	4	2	2	2	1	2	5	3	1	1	1
172	1	1	3	4	5	5	4	2	2	2	1	2	5	3	2	1	1
173	1	2	3	3	4	4	3	2	2	2	1	2	4	3	2	2	1
174	2	2	3	3	3	3	3	2	2	2	1	2	3	2	2	2	2
175	2	2	2	2	2	2	2	2	1	2	1	2	2	2	2	2	2
176	2	2	2	2	2	2	2	2	1	2	1	2	2	2	2	2	2
177	2	2	2	2	1	1	1	2	1	2	1	1	1	2	2	2	2
178	2	2	2	2	1	1	1	2	1	2	1	1	1	2	2	2	2
179	2	2	2	1	1	1	1	2	1	2	1	1	1	1	2	1	2
180	1	1	1	1	1	1	1	1	1	1	1	1	1	1	1	1	1

Luminaire Report Summary

IESNA:LM-63-2002
[TEST]
[TESTDATE] 2016-11-08
[TESTLAB] Standard-Tech Co. Ltd
[ISSUE DATE] 2016-11-08 11:48:53
[MANUFAC] SARIN Energy Inc.
[LUMINAIRE] SES-WP-3000-26
[_LAMPPOSITION] 0,0
[_TOTALLUMINAIRELUMENS] 2759.3
[OTHER] EVERFINE GO-R5000_V2 SYSTEMGamma(deg) Fz(lm) Ft(lm) %Lum %Lamp0- 10 90.95
90.95 3.30 3.3010- 20 283.43 374.38 13.57 13.5720- 30 380.63 755.01 27.38 27.3830-
40 355.78 1110.79 40.28 40.2840- 50 367.35 1478.14 53.60 53.6050- 60 358.81
1836.95 66.61 66.6160- 70 308.47 2145.42 77.79 77.7970- 80 213.92 2359.34 85.55
85.5580- 90 128.05 2487.39 90.19 90.1990-100 73.72 2561.12 92.86 92.86100-110
66.64 2627.75 95.28 95.28110-120 55.05 2682.80 97.27 97.27120-130 38.84 2721.63
98.68 98.68130-140 21.69 2743.33 99.47 99.47140-150 8.69 2752.02 99.78 99.78150-
160 4.51 2756.52 99.95 99.95160-170 1.22 2757.74 99.99 99.99170-180 0.22 2757.96
100.00 100.00

FILE: CREATED USING ABSOLUTE PHOTOMETRY
FILE: CANDELA MULTIPLIER: 1
FILE: VERTICAL ANGLES: 181, HORIZONTAL ANGLES: 17
FILE: COORDINATE SYSTEM: TYPE C
FILE: UNIT OF MEASURE: METRIC
FILE: BALLAST FACTOR: 1

Photometrics Pro 1.3.29 copyright 2003-2019 by jSolutions, Inc.
Reported data calculated from manufacturer's data file, based on IES recommended methods.