

# Photometrics Pro

## Luminaire Photometric Report

**Filename:** Transparent Ceiling Light Jade 12W CLWLT

**Manufacturer:** SARIN Energy Inc

**Luminaire:** LED jade light

**Luminaire Cat:** SES-CLWLT-12-XXXXS

**Lamp:** LED

**Lamp Cat:** LED40W

**Lamp Output:** 1 lamp, rated Lumens/lamp: 1120

**Max Candela:** 105.8 at Horizontal: 90°, Vertical: 115°

**Input Wattage:** 11.3

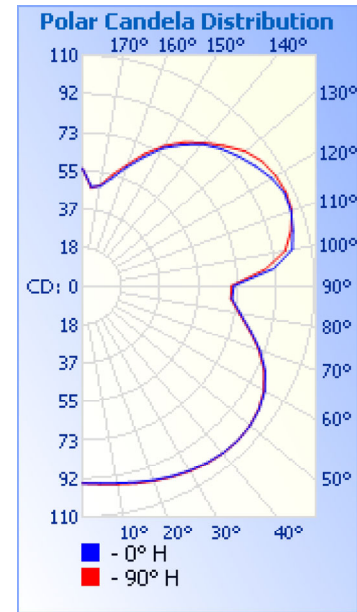
**Luminous Opening:** Rectangle (L: 11.81", W: 11.81")

**Test:** CZ150821

**Test Date:** 2015-09-01

**Test Lab:** Sheenly Lighting Co., Ltd

**Photometry :** Type C



### Roadway Summary

<b>Cutoff Classification:</b>	NONCUTOFF	
<b>Distribution:</b>	Unclassified, Unclassified	
<b>Max Cd, 90 Deg Vert:</b>	75.4	
<b>Max Cd, 80 to &lt;90 Deg:</b>	79.0	
	Lumens	% Lamp
<b>Downward Street Side:</b>	288.6	25.8%
<b>Downward House Side:</b>	281.1	25.1%
<b>Downward Total:</b>	569.7	50.9%
<b>Upward Street Side:</b>	282.4	25.2%
<b>Upward House Side:</b>	267.6	23.9%
<b>Upward Total:</b>	550.1	49.1%
<b>Total Lumens:</b>	1,119.7	100%

### Flood Summary

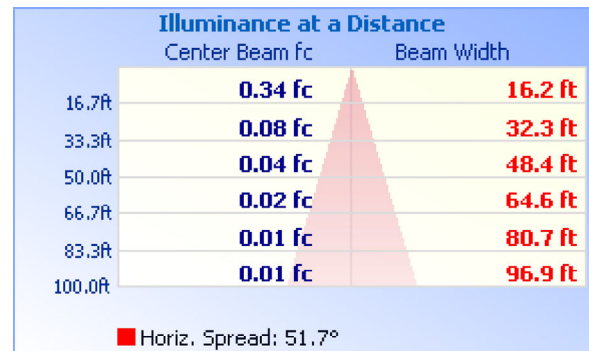
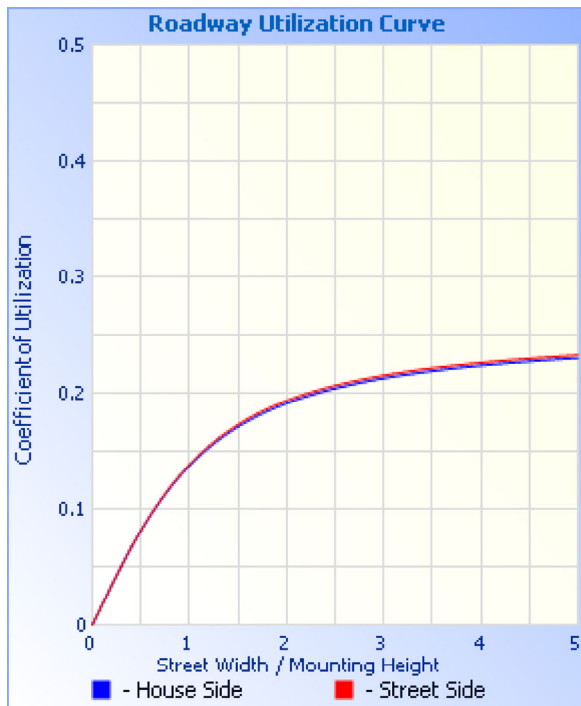
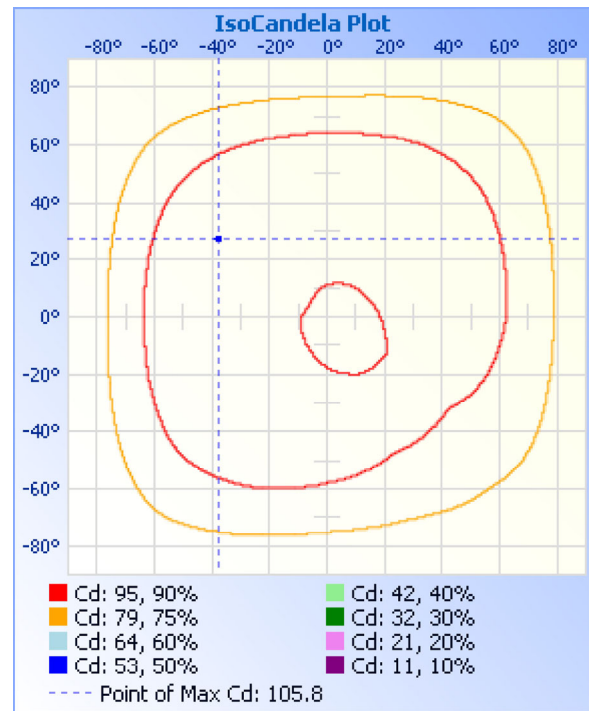
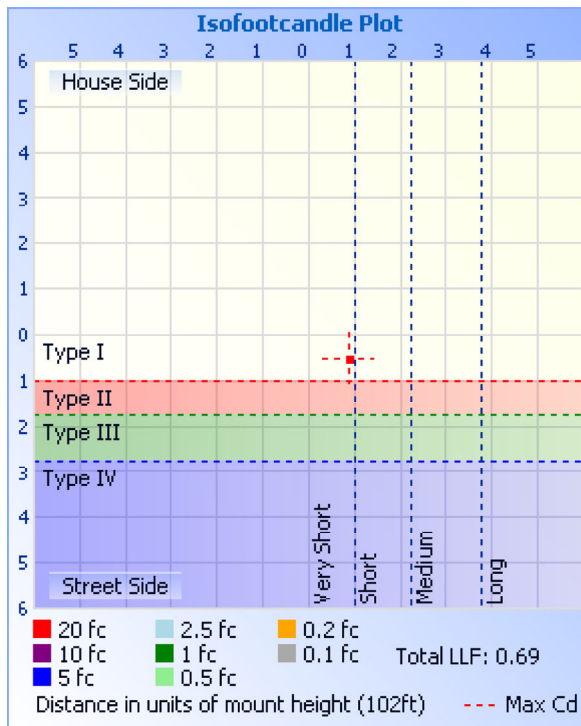
	Efficiency	Lumens	Horizontal Spread	Vertical Spread
<b>Field (10%):</b>	100%	1,119.8	n/a	n/a
<b>Beam (50%):</b>	99.1%	1,110.1	51.7	n/a
<b>Total:</b>	100%	1,119.8		

### Zonal Lumen Summary

Zone	Lumens	% Lamp	% Luminaire
0-30	81.7	7.3%	7.3%
0-40	144.7	12.9%	12.9%
0-60	312.0	27.9%	27.9%
60-90	257.7	23%	23%
70-100	258.3	23.1%	23.1%
90-120	295.7	26.4%	26.4%
0-90	569.7	50.9%	50.9%
90-180	550.2	49.1%	49.1%
0-180	1,119.9	100%	100%

### Lumens Per Zone

Zone	Lumens	% Total	Zone	Lumens	% Total
0-10	9.0	0.8%	90-100	92.7	8.3%
10-20	27.2	2.4%	100-110	104.1	9.3%
20-30	45.5	4.1%	110-120	98.9	8.8%
30-40	63.1	5.6%	120-130	85.7	7.7%
40-50	78.3	7.0%	130-140	68.4	6.1%
50-60	88.9	7.9%	140-150	49.6	4.4%
60-70	92.0	8.2%	150-160	31.0	2.8%
70-80	86.4	7.7%	160-170	15.3	1.4%
80-90	79.2	7.1%	170-180	4.5	0.4%



**Coefficients Of Utilization - Zonal Cavity Method**

Effective Floor Cavity Reflectance: 20%

RCC %:	80				70				50				30				10				0
RW %:	70	50	30	0	70	50	30	0	50	30	20	0	50	30	20	0	50	30	20	0	0
RCR: 0	1.07	1.07	1.07	1.07	.99	.99	.99	.51	.84	.84	.84		.70	.70	.70		.57	.57	.57		.51
1	.94	.89	.83	.79	.87	.82	.77	.36	.68	.65	.62		.56	.53	.51		.45	.43	.41		.36
2	.85	.75	.68	.61	.77	.69	.63	.28	.58	.53	.48		.47	.43	.40		.37	.34	.32		.27
3	.76	.65	.56	.49	.70	.60	.52	.22	.50	.44	.39		.41	.36	.32		.32	.29	.26		.21

4	.69	.57	.48	.41	.63	.52	.44	.18	.43	.37	.32	.35	.30	.27	.28	.24	.21	.17
5	.63	.50	.41	.34	.58	.46	.38	.15	.38	.32	.27	.31	.26	.22	.25	.21	.18	.14
6	.58	.45	.36	.29	.53	.41	.33	.13	.34	.28	.23	.28	.23	.19	.22	.18	.15	.12
7	.53	.40	.31	.25	.49	.37	.29	.11	.31	.25	.20	.25	.20	.17	.20	.16	.13	.10
8	.49	.36	.28	.22	.45	.33	.26	.10	.28	.22	.17	.23	.18	.14	.18	.14	.12	.09
9	.46	.33	.25	.19	.42	.30	.23	.09	.25	.20	.15	.21	.16	.13	.17	.13	.10	.08
10	.43	.30	.22	.17	.39	.28	.21	.08	.23	.18	.14	.19	.15	.11	.15	.12	.09	.07

Candela Table - Type C

	0	30	60	90	120	150	180	210	240	270	300	330	360
0	94	94	94	94	94	94	94	94	94	94	94	94	94
5	94	94	95	94	94	94	93	93	93	93	94	94	94
10	95	95	96	95	95	95	94	93	93	94	94	94	95
15	96	97	97	97	97	96	95	94	94	94	95	96	96
20	98	99	99	98	98	97	96	95	95	96	97	97	98
25	99	100	100	100	100	99	97	96	95	97	98	99	99
30	101	101	102	101	101	100	98	96	96	98	99	100	101
35	102	102	103	102	102	101	99	97	97	99	100	101	102
40	103	103	104	103	103	102	99	97	97	99	101	102	103
45	103	104	104	103	103	102	99	97	96	99	101	103	103
50	103	103	104	103	103	101	98	96	96	99	101	103	103
55	102	102	102	102	101	100	97	94	94	98	100	102	102
60	99	99	100	99	99	97	94	91	91	96	99	99	99
65	95	95	95	94	95	93	90	87	88	93	95	96	95
70	89	89	89	88	90	88	85	82	83	89	91	91	89
75	82	82	82	82	84	82	79	77	78	83	85	84	82
80	76	75	75	75	78	77	74	72	73	78	79	78	76
85	71	71	70	70	74	74	72	69	70	73	74	73	71
90	71	71	69	70	74	75	73	69	69	72	72	72	71
95	90	88	86	86	89	89	85	80	80	85	88	89	90
100	100	98	95	97	99	98	94	89	88	93	97	99	100
105	103	102	101	102	103	99	95	90	91	97	101	103	103
110	105	104	104	105	104	100	95	91	92	98	102	104	105
115	105	104	105	106	103	98	95	90	92	98	101	103	105
120	103	102	105	105	101	95	93	88	90	98	100	100	103
125	99	99	102	103	98	92	90	86	88	96	97	97	99
130	96	96	97	100	93	90	88	84	85	93	93	93	96
135	92	91	93	94	89	86	85	81	82	89	88	90	92
140	88	87	87	89	84	82	82	78	78	85	83	85	88
145	82	81	82	83	78	76	77	73	74	80	78	79	82
150	76	75	77	77	74	70	71	68	71	75	74	73	76
155	67	68	70	69	67	63	63	63	65	68	67	66	67
160	60	62	64	61	60	57	56	56	59	60	60	59	60
165	53	56	57	55	53	51	49	49	52	53	54	53	53
170	49	50	50	49	48	46	44	44	46	47	48	47	49
175	48	48	48	47	46	45	43	41	43	44	46	45	48
180	56	56	56	56	56	56	56	56	56	56	56	56	56

**Luminaire Report Summary**

IESNA:LM-63-2002  
[TEST] CZ150821  
[TESTDATE] 2015-09-01  
[TESTLAB] Sheenly Lighting Co., Ltd  
[ISSUE DATE] 2015-09-01 16:21:10  
[MANUFAC] SARIN Energy Inc  
[LUMCAT] SES-CLWLT-12-XXXXS  
[LUMINAIRE] LED jade light  
[LAMPCAT] LED40W  
[LAMP] LED  
[\_LAMPPOSITION] 0,0  
[\_TOTALLUMINAIRELUMENS] 1119.9  
[OTHER] EVERFINE GO-2000A\_V1 SYSTEM  
FILE: CANDELA MULTIPLIER: 1  
FILE: VERTICAL ANGLES: 37, HORIZONTAL ANGLES: 13  
FILE: COORDINATE SYSTEM: TYPE C  
FILE: UNIT OF MEASURE: METRIC  
FILE: BALLAST FACTOR: 1

Photometrics Pro 1.3.29 copyright 2003-2020 by jSolutions, Inc.  
Reported data calculated from manufacturer's data file, based on IES recommended methods.